



BMW Clubs  
International Council



BMW Motorcycle Club  
New Zealand



BMW Motorcycle Club New Zealand

# NEWSLETTER

Official BMW Club - *Established 1975*

June 2026



MEMBER OF BMW CLUBS INTERNATIONAL COUNCIL



**EDITORIAL COPY TO:**  
[newsletter@bmwmc.nz](mailto:newsletter@bmwmc.nz)

**OTHER CORRESPONDENCE TO**

The Secretary  
BMWMCNZ  
PO Box 109-245  
Newmarket  
Auckland 1149  
New Zealand

**PRESIDENT**

Colin Gates  
027 9222 350  
[president@bmwmc.nz](mailto:president@bmwmc.nz)

**VICE PRESIDENT**

Stephen Parkinson  
021 989 092  
[vicepresident@bmwmc.nz](mailto:vicepresident@bmwmc.nz)

**SECRETARY**

Sue Duncan  
027 270 7374  
[secretary@bmwmc.nz](mailto:secretary@bmwmc.nz)

**TREASURER**

Colin Gates  
027 9222 350  
[treasurer@bmwmc.nz](mailto:treasurer@bmwmc.nz)

**MEMBERSHIP SECRETARY**

Dave Oldershaw  
029 200 3679  
[membership@bmwmc.nz](mailto:membership@bmwmc.nz)

**AREA REP LIAISON**

Ian Macartney  
027 281 0242  
[arl@bmwmc.nz](mailto:arl@bmwmc.nz)

**BMWMC GEAR**

[shop@bmwmc.nz](mailto:shop@bmwmc.nz)

**PRIVACY OFFICER**

[privacy@bmwmc.nz](mailto:privacy@bmwmc.nz)

**THANK YOU for your  
feedback and stories**  
[feedback@bmwmc.nz](mailto:feedback@bmwmc.nz)

**Contents**

- 3 New Members, last month (below)
- 4 President's Podium
- 6 Area Reports Start
- 28 Events
- 31 Market Place
- 33 Team behind the Scenes
- 34 Area Representatives

## Welcome to our New Members

We hope you'll take part in many of your local and national events. Your Area Rep will be pleased to introduce you to other members in your area. Our monthly newsletter is an open forum for all members. If you fancy a story and/or photos published about your ride, the rebuild of your bike, a book you might have read or a movie you have seen lately, or just want to get something off your chest about how the club is going, then please email/ phone the Editor no later than the 2<sup>nd</sup> day of the month.

**We forward to your contributions.**

**Please Note:** Any material intended for publication in the newsletter should reach the Editor no later than the 2<sup>nd</sup> day of any month but the earlier the better. The Newsletter is an open forum for all members. Views expressed by members may not necessarily represent the views of BMWMC. Publication of all material is subject to the Editor's discretion. Photos are courtesy of article authors and/or usually credited when known, unless requested otherwise.

**Cover picture:** Canterbury Ride

**Photo by:** Jason Batchelor

**Date:** May, 2026



BMW Clubs  
International Council



BMW Motorcycle Club  
New Zealand



# A Very Warm Welcome to:

By Region (North to South)

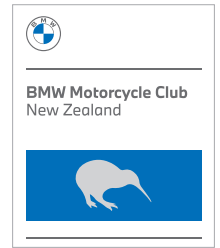
FARMER	Chris	NORTHLAND
WILLIAMS	Daniel	AUCKLAND
KRAETTLI	Markus	AUCKLAND
KAUR	Harvey	AUCKLAND
WALSH	Bevan	AUCKLAND
BEAUMONT	Stephen	BAY OF PLENTY





## President's Podium

Colin Gates



# June 2026

It has been a crazy, busy time for me recently, with more of the same expected over the coming weeks.

Consequently, along with the winter weather, there has been very little riding for me lately.

On the club front, I recently had the pleasure of attending our first face-to-face committee meeting, with the entire committee present, along with several others.

Getting together in the same room is something we would ideally like to do at least once each year, especially when there is a change of committee members. Traditionally, the location would be chosen based on a range of practical considerations. However, we have now agreed that, wherever practical, we will hold this meeting at, or close to, the venue selected for the following year's AGM. This has several advantages and allows us to review the venue firsthand, assess the layout, facilities and accommodation, and discuss any improvements while we are there.

Holding this year's meeting at the planned venue for the 2027 AGM and National Rally proved to be an excellent decision. Present were Stephen Parkinson (Vice President), Sue Duncan (Secretary), David Oldershaw (Membership), Ian Macartney (Area Representative Liaison), and me. We were also delighted to welcome Pieter Holl, our incoming Treasurer, and, Saturday afternoon, Chris Townson (Waikato Area Representative) and Matt Bland (Waikato member), both of whom are involved in hosting the 2027 AGM and Rally.

It was wonderful to have everyone together and to spend time exploring the venue. We all came away genuinely excited by what it has to offer. It truly is a fantastic location that meets our requirements exceptionally well, with an interesting history, plenty of character, and lots for members to enjoy over the weekend.

Yes, you're reading that correctly... We have a new Treasurer!



Pieter Holl, a retired accountant and a club member from Auckland since 2020, has, after careful consideration, kindly agreed to take on the role. He is an excellent appointment, and, as with all our volunteers, we are extremely grateful for his willingness to step forward and help the club.

Following my appointment as President earlier this year, we began looking for someone with the right skills to fill the Treasurer's position. We have been very fortunate that Pieter was prepared to accept the role. Under our Constitution, the committee can appoint a suitable person to fill a vacant position between elections. It is also good governance to avoid one person holding multiple committee roles where possible, and particularly in my case, separating the roles of President and Treasurer was important.

The handover is well underway, with all the usual hurdles of paperwork, bank authorisations, email and database access now being worked through. We're almost there.

The SIRAG registration will be my focus next week, and I expect that to be completed and advised then.

Likewise, we plan to have the AGM/Rally registration and more details to you later in July.

We will soon be inviting members to complete a simple but useful survey. Stop with the yawns, hearing your thoughts and ideas is an important. The last survey was done some years back and still makes interesting reading. Please, if anyone has a particular angle they would like asked or answered from me, the committee or the survey, then ask away. All our contact details are close to the back of the newsletter and on our website.

Finally, if you are one of the lucky ones owning the F 450 GS, please share you thoughts with us all and do a review with some pics, please. I haven't ridden one yet but am looking forward to doing so.

I look forward to catching up with many of you over the coming months. Until then, ride safely, enjoy the longer days, and thank you for your continued support of our club.

*Colin*



## One of the first



Charlene Joubert on an F450GS

### May

Waikato Group has had a quiet month. We met in Matamata for our monthly dinner with members from Huntly, Morrinsville, Cambridge and Matamata attending. Matthew Blann is our acting Area Rep at the moment, as Chris spends time with family in the UK.

### June

On Saturday, June 13th, Road and Sport Motorcycles, our local dealership, had the reveal of the new 450GS.

Local members Thomas and Charlene and the Duncans attended. Charlene is now the proud owner of one.

Planning for the Rally is well underway, with information being released soon.

Sue #3088



# East Coast Exclusive

Alan Robinson - eastcoast@bmwmc.nz



May



From left: Me, Ann, Stella, Walter, Peter, Folker, Maria, Leonie, Tony, John (I can't tell who is in front of whom, so sorry if I have Tony and John the wrong way around), Les, John, Pam, Bronwyn (hiding) and Carole.

I have very little to report this month. I think that Walter and Stella have taken their bike off the road for the winter, and Ann and I have just done the same.

However, our monthly dinners continue to be well attended, and the meal at the Thai Chef's Restaurant in Napier last month was no exception.

I'm thinking of booking a table at Casa Ahuriri next.

Alan #4049



**BMW  
MOTORRAD**



# MCIVER & VEITCH THE SOUTH'S AUTHORISED BMW MOTORRAD DEALER

[mciverandveitch.co.nz](http://mciverandveitch.co.nz)

**MAKE LIFE A RIDE**



**Authorised BMW  
Motorrad Dealer**

**McIver & Veitch**  
112 Crawford Street  
Dunedin  
(03) 477-0236  
[sales@mciverandveitch.co.nz](mailto:sales@mciverandveitch.co.nz)  
[mciverandveitch.co.nz](http://mciverandveitch.co.nz)

**MCIVER  
&  
VEITCH**  
*Motorcycling Since 1932*

# Rangitikei Roundup

Murray Petherick - rangitikei@bmwmc.nz



Papa Cliffs

The May ride, which would normally have been on Sunday, May 10<sup>th</sup>, was rescheduled to Saturday 9<sup>th</sup>, in deference to Mother's Day. The planned ride was to meet at Ashhurst and then head over to Porangahau for lunch but the weather forecast looked a bit dodgy, so early Saturday morning, the call was made to meet at Ashhurst and, over a coffee, sort out a ride plan for the day. Only three other intrepid riders, Barry, Nev and Robin, joined me at the café in Ashhurst, and after considering the high wind warning for the area east of the ranges, we decided to head up SH 54 (Vinegar Hill), via Colyton and Cheltenham, for a lunch stop at Hunterville. Conditions for the ride through to Hunterville were good; cloudy, and at times a little breezy, but no rain. Road conditions were good, and there are always some good views, including those of Papa

Cliffs, where the river has become deeply incised, together with the odd view of a carelessly parked car.

In Hunterville, we lunched at the Argyle Hotel, which, we understand, has been purchased by a local group, after lying idle for a long time, and refurbished. The refurbishment has been well done, and the building now boasts bar and café areas, plus a couple of artisan shops.

After lunch, Barry and Robin headed homewards down SH1 while Nev and I took a jaunt over Mt Curl and then checked a couple of back roads before we split up. Nev headed home to Whanganui via Turakina, and yours truly headed home to Ohau via Marton and Bulls. I had to put up with a strong westerly crosswind heading south from Sanson but managed to dodge what appeared to have been a heavy rain shower that

must have been through the area just before me. Maybe the timing was just luck, or maybe it was the preemptive strike I made by wearing my yellow rain jacket!

Thanks, Gents, for a good, semi-impromptu day out.

Murray #2690



Oops!



Lunch stop



Rangitikei view

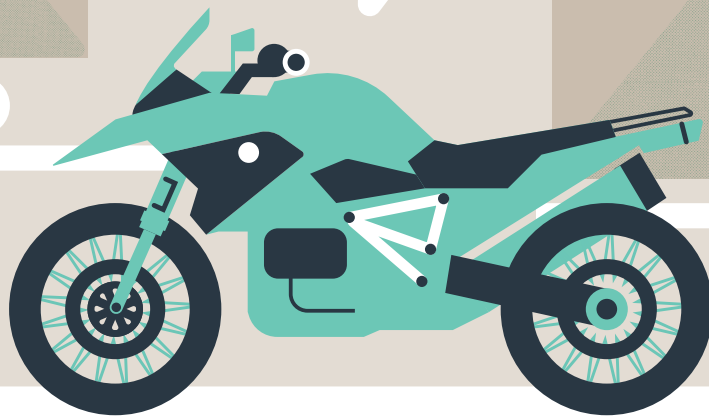
Advertisement for Arcadia Motel Christchurch. The main image shows the motel building with a sign that reads 'ARCADIA MOTEL CHRISTCHURCH Comfortable, spacious affordable accommodation'. There are also smaller inset photos showing the interior of a room with a red bedspread and a living area with a sofa.

**FREEPHONE 0800 272 23 42**

564 Ferry Road, Woolston, [www.arcdiamotel.co.nz](http://www.arcdiamotel.co.nz)

Geoff Lester 027 285 1293

I'll SHOW  
YOU PARTS OF  
THE WORLD  
OTHERS FEAR



Just like a BMW R1200, every motorcycle has a unique character. Which is why we design insurance that's anything but off-the-shelf. If you have a bike that helps you escape the ordinary, talk to us about customised insurance you won't find anywhere else.

**Star Insure Morotcycle. It's the insurance your bike would choose.**

ESCAPE THE  
ORDINARY



0800 250 600



starinsure.co.nz

starinsure  
Motorcycle

# Wellington & Wairarapa Wanderings

Denis Hulston - wellington@bmwmc.nz



## Club night social, meet and eat at the Petone Club

Fourteen club members turned out for our usual Club meet and eat on the first Monday of the month, 4<sup>th</sup> May, a good night and chance to catch up.

## Impromptu rides rather than scheduled club rides

We didn't run our calendared rides this month (9<sup>th</sup> and 17<sup>th</sup>) due to weather and other riding. We did, however, manage plenty of impromptu riding kilometres, taking advantage of fine weather windows.

## Three Day Ride 12<sup>th</sup>, 13<sup>th</sup>, 14<sup>th</sup> May Wairarapa, Waipukurau, Gentle Annie, Waiouru, around the mountains, Ohakune, Whangaehu Valley Fields Track, Whanganui, home

We were fortunate to get a three-day weather window for the Wairarapa, Central Plateau and Whanganui, so we took the opportunity for three days of riding – only three of us, Ian, Dave, and Denis, available for the full ride, but we were joined by Glenn on the Wairarapa section, and Richard joined us to stay overnight in Ohakune and ride the Whangaehu Valley section.

A 300km first day took us through the north eastern Wairarapa – Eketahuna, a road diversion to Pa Valley, Pongaroa, hoping for a lunch break, Weber, Wimbledon, Porangahau, still hoping for a lunch break, but the remote pubs were closed. We continued to Waipukurau with a very late lunch pie at 4pm, before we checked into our accommodation and checked out the local limited dinner options.

Glen rode with us to the Waione turnoff before indulging in some excellent cruisy gravels, Horoeka, Towai, Coonor, Pori Roads and more gravels from Alfredton to Tainui.

Great day out, Glenn.

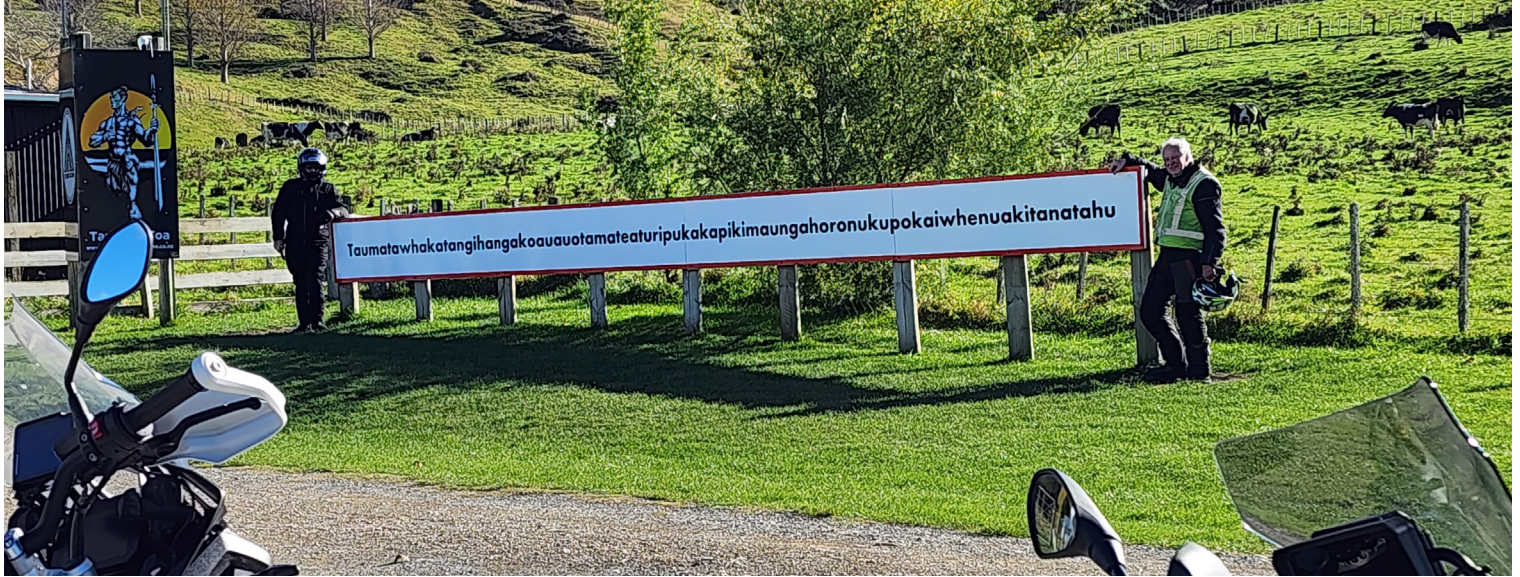
Day two, after a good local breakfast, we headed for Waiouru via the Napier Taihape Road – Fernhill, Sherenden, Kaweka Range, Gentle Annie, Erewhon Station. Again, we had good weather, although temperatures dropped to 8 degrees. This road never fails to inspire, no matter how many times you ride it. It's a unique South Island landscape in the North Island, once totally covered in beech forest and tussock, but now a developed high country station landscape. We stopped for a meal at the Waiouru Military Museum before continuing our ride up the Desert Road (in pristine condition since resurfacing), around Tongariro from Rangipo, before meeting SH4 at Waimarino and heading south to Ohakune for the night, a fabulous 350km ride. We were joined by Richard, who had ridden backroads, the Turakina Valley west of Taihape.

Day three saw a 10 am start, to avoid any possible ice in the Whangaehu



Valley, and on to Fields Track to meet the Parapara SH4 road. The Whangaehu really turned it on – no traffic except the odd farm vehicle, complete with dogs, and a dreamy autumn landscape. Richard rode Burma Hill and Mangamahu Rd, Turakina Valley and Makuhou

Rd. We stopped for lunch at Upokongaro near Whanganui and left Dave to catch up with colleagues in Whanganui before we continued home via Fordell and back roads south of Marton and to Shannon to avoid the main highways. Another 300km day for an all-up 970km ride.



Dave and Ian, practising their language skills – the longest place name



Ian and the Erewhon Gentle Annie landscape





Around the mountains – Ruapehu, Tongariro, Ngauruhoe



Ian, Dave, Richard at the Whangaehu Valley Fields Track junction



Parapara view from Fields Track

Fields Track Whangaehu River Bridge

# Wellington & Wairarapa Wanderings

Richard Murcott - wellington@bmwmc.nz



## 22<sup>nd</sup> May - Impromptu ride to Riversdale via Whareama Public Access route:

Autumn's anticyclones kept serving up superb riding weather, and by Thursday evening, Glenn was clearly feeling the itch. A message pinged into the WhatsApp impromptu group around dinnertime: "Any starters for a ride tomorrow?"

By 9pm we had a rough plan, a map (naturally, the gravelly option), and four confirmed riders. Glenn proposed a civilised start, coffee en route, and lunch at Riversdale; such an easy sell.

We rolled out from Z Remutaka at 10am, collected Dave in Featherston, and were parked up at Kokodelli Café in Greytown not long after. Perfect weather, quiet roads, good coffee; the day was off to a strong start. A quick chat over the cups and we agreed on a small detour.

### Rocky Hills Sanctuary detour

The Rocky Hills and the Forest Sanctuary Area is one of those eastern Wairarapa gems that you don't hear much about; a dramatic landscape of conical taipō accessed from Rocky Hill Road, a seldom used 9 km no exit road situated about 4km before Te Wharau.

The first 6 km is well formed gravel, including a stretch through a QEII National Trust Open Space Covenant. Beyond that, the final 3 km to the Sanctuary boundary is a farm track. It's still a legal road, just no longer on the Carterton District Council's maintenance list. When dry, it's a fun little ride, provided a gate which

is situated 6km in at a woolshed, is unlocked.

Richard had the digital key, so we were set. The plan was to poke our noses past the gate to where there's a better view of the elevated sanctuary and its taipō.

But, not today... The smart lock had been rendered redundant by another padlock on the chain.

So, we enjoyed what access we had, in glorious, windless conditions, then continued eastward to Riversdale via Te Wharau and the gravel of Kaiwhata and Homewood Roads.

### The return loop - more gravel, of course!

On the way back we looped through the Whareama Public Access Easement, which threads its way through Ngaumu Forest and the northern edge of the Rewa Bush Conservation Area. This shortcut gifted us another 17 km of gravel.

Recent forestry activity meant some sections were beautifully smooth; until they weren't. A few short stretches of ridging and unevenness kept things interesting.

How's that for an impromptu call?: Great company, perfect weather, ample gravel, and unusual places.

[www.jnl.co.nz/our-forests/#map](http://www.jnl.co.nz/our-forests/#map)

Richard #4432



Riversdale: Dave, Glenn, & Chester (Richard on camera duty)

## Wellington & Wairarapa Wanderings

Denis Hulston - wellington@bmwmc.nz



24<sup>th</sup> May Sanson, Mt Curl, Ohingaiti, Mangamako, Pemberton, Kimbolton, Ashhurst, Shannon.

This was a long day impromptu ride, 9.30am – 6.30pm, 460km, returning home in the dark. There were only two of us riding, Keith and Denis, but we

met with the Rangitikei riders at The Woolshed, Sanson, where they were having their monthly club lunch, and we stopped for coffee.



## 30<sup>th</sup> May Last ride of the month – Cape Palliser Light, Waimeha



Another impromptu fine weather window ride. Eight riders: Denis H, Keith T, Ian H, Chester C, Richard M, Dave O, Ian M, Michael M met to leave Z Remutaka at 10am for a leisurely ride to Cape Palliser (250km).

With mixed messages about whether there would be a food stop at Waimeha, we'd planned to stop at Martinborough en route and catch up with any Wairarapa riders. However, without any

riders from the Wairarapa, we took a more direct route via Kahutara and onto the Palliser Coast. There had been heavy swell warnings on the coast, but the sea had largely diminished, and we arrived at Palliser Light in windless sunshine. A few kilometres of friendly gravel to the Light, a stop at the reserve to see countless seals, and we returned to Waimeha for a welcoming lunch.



Ride briefing, Remutaka - Michael, Denis, Chester, Dave, Ian, Richard, Ian, Keith (photo)

With mixed messages about whether there would be a food stop at Waimeha, we'd planned to stop at Martinborough en route and catch up with any Wairarapa riders. However, without any riders from the Wairarapa, we took a more direct route via Kahutara and onto the Palliser Coast. There had been heavy swell warnings on the coast, but the sea had largely diminished, and



we arrived at Palliser Light in windless sunshine. A few kilometres of friendly gravel to the Light, a stop at the reserve to see countless seals, and we returned to Waimeha for a welcoming lunch.



## Feeling good - Wellington impromptu riding this month.

May was a good riding month. Our WhatsApp WLGBMW Impromptu Rides group has been working well, and taken priority for organising rides as weather and availability permit. It's an excellent way of checking with riders and firming up a ride. We've been using it for ride cancellations and updating ride planning too.

It resulted in four great May rides, around 2000km and six days of club riding, twenty riders joining these Autumn rides and fourteen at our social get together - a great riding month. Thanks to all who joined "the ride".

**Denis #3131**



Pirinoa Café – Michael's R80 waiting for Michael



Waimeha – Chester and Richard

# Top of the South Beemers/Te Tauihu

Gretchen Holland - topofthesouth@bmwmc.nz



## Queen Charlotte Tavern, Linkwater - Sunday 14<sup>th</sup> June 2026



**G**orgeous day, gorgeous riding, gorgeous food and gorgeous company!

Twenty bikes, 21 people, from Nelson and Marlborough, sat outside in the sun and shade at the tavern in Linkwater. Welcome to Ian on his first club ride. I got off my bike at the end of the day and thought 'I enjoyed

every second of my day'.

**Gretchen #949**

Riders were: Dale and Odette, John, Peter, Gretchen, Tony, William, Greg, Rick, Trudi, Matthias, Hilary, Rodney, Ian, Ross, Tu.

Visitors were:

Sandra, Chris S, Roy, Dion, Chris.



# Canterbury Calling

Jason Batchelor - canterbury@bmwmc.nz



## Club ride Saturday 16<sup>th</sup> May



Here are some pics of our Club Ride in May. The day dawned nice and clear. I arrived at the meeting point and waited, and in the end, not a single soul showed up. I was left there looking like Johnny No Mates on a beautiful Autumn Morning.

This was to have been my first time leading a gravel ride. I have been primarily a road rider most of my life and over the last 10 years have ventured with much trepidation into the world of "adventure" riding. I have even bought a smaller, lighter bike (my BMW X Country, which weighs in at around 162kg with its 9.5-litre fuel tank full) as my skill level is almost non-existent, and I figure I need all the help I can get. So doing anything more than broad sweeping shingle roads on the R1250GSA is not happening now that I am on the wrong side of 60!!

Anyway, I was out for a ride, and so I set off on my own, over the Port Hills, around the bays first to Port Levy. Then onto the shingle and over to Pigeon Bay. The weather was stunning, and I just couldn't figure out why no one had



shown up. I then did a few more gravel sections, including Pettigrews and Pipers Valley roads, finally ending up at the Duvauchelle Hotel for lunch.

Well, bugger me..... the place was empty, no one there either. I felt like I had crossed into a parallel universe where there were NO adventure riders. I had a quiet lunch there and had some time to reflect.

I joined the BMWMC to meet and ride with others. Quite a bit of my time at work, up until I changed jobs recently, involved working shift work and a fair bit of nights and weekends, where I was basically locked in a room by myself for 12 hours at a time. So, I am not the type who goes riding to get away from it all, oh sure, I do love an adventure into the back blocks to somewhere I have never been, but for me. Riding with a few others makes it all the more fun. I am an unashamed BMW Motorcycle fan (I own 3 of them after all), and mostly it's been a good experience. Things haven't been great this year in Canterbury, as Feb we had 3 bikes, March only 2 bikes



and then April and May I was just on my own. I am sad we can't do better than this. I know a couple of you were away or busy, but we have around 80 members in Canterbury, and surely we can do better than this!!

### Distinguished Gentlemans Ride Christchurch: 17<sup>th</sup> May

This was the very next day after my solo club ride and what a difference, from being all alone the day before this time there were bikes galore!! All shapes and sizes and even a couple of adventure bikes too. Lol. We had taken our beloved "Beatriss" this day, our 2004 R1200CL cruiser.

Over 240 bikes in the end signed up. What a turnout. Annabelle and I did our best to dress the part, it was a bit chilly and wearing "normal" clothing soon showed why Bike gear is best. The cold wind just cut right thru us. However the ride wasnt too long and with a max speed of 60kmh we made our way en masse from the middle of Christchurch, out to Sumner, over Evans pass to Lyttelton and finally back thru the Lyttelton Road tunnel back to central Christchurch.





The noise coming thru the tunnel was just stupendous and was mind blowing. What an awesome experience to be part of a great fund-raising event and ride in such a large formation.



## 20<sup>th</sup> May - Social evening



After a small turnout in April, we had a good group show up this month. As usual, we all had a good meal and lots of laughs and banter. Great to see Grant Hyde back, looking much happier after his forced rest after open heart surgery, he has coped remarkably well with not being allowed on his bike too!! Sadly,

Jo Buckner joined us for the last time as Jo and Gary are moving up to the North Island. Through the years, they have been very involved in the club, and they will be sorely missed from our Canterbury events. We wish them all the best as they head North to be closer to family.



## Club ride Saturday 23<sup>rd</sup> May

At our monthly club night, where I enthralled everyone with my tales from my solo club ride the previous weekend, a few of our regulars were coerced by Geoff Davis into coming along the following Saturday for a bit of a gravel blast. Somehow the word got out that I was NOT going to be leading, and so a number of bikes showed up at the meeting spot. We headed north with our destination being Lake Taylor. We were all advised to bring lunch, and there was the option to continue on up to Loch

Katrine after lunch for those hardy souls who like it rough!! 7 bikes duly followed Geoff as he took a meandering route, avoiding tar seal where he could until we were heading into the lake. Geoff, just to prove this was an easy ride, had Fran on the back as his pillion. We had a nice stop for lunch, and then we carried on. Grant Hyde, who was our Tail End Charlie on his WR250 (under Dr's orders not to ride his T7), headed back towards civilisation at this point and of course missed all the drama. At one point, the

track split and a group of us followed Jacko along the lakefront and into what turned out to be soft, deep shingle. The bike in front of me lost traction (he was on road tyres!!) and so I had to stop, looking in my mirror, I was just in time to watch Craig dump his F850GS down heavily, trapping himself under the bike in the process. After a bit of heaving and grunting, we all got him upright and moving again. Craig, however, not content with dropping his bike at low speed in deep shingle then proceeded to come off going considerably faster and was spat off in a more violent manner landing on his shoulder. Unfortunately, I was ahead of all this fun and so no pics... we all eventually made it to Loch Katrine, and after a suitable few moments to take in the view and surroundings, we made our way back out thru Hawarden to Waikari for a coffee and a snack at the cafe. All made it home safely. Craig, however, was feeling rather sore, and I understand he headed off to bed for an early night. His bike, which he was clever enough to drop first on one side and then on the other, had sustained some considerable damage and had to go off for a look over for an insurance claim. However most of us had a great day and it might take some time before we can get Craig to join us again. Lol. I was very glad I was on my little X Country and had no idea how Geoff and Fran did the whole thing two-up on his Husky. Well done to both of them.







**BMW  
MOTORRAD**



# BOXER BRILLIANCE

**MAKE LIFE A RIDE**

Colour options shown and models are subject to availability; options and colours may differ from images (Please contact your BMW Motorrad dealer). All prices, availability and specifications are subject to change without notice by BMW Motorrad New Zealand. Valid while stocks last.



**R 12 G/S**  
FROM \$30,390 + ORC



**R 1300 RT**  
FROM \$43,990 + ORC



**R 1300 RS**  
FROM \$33,490 + ORC



**R 1300 R**  
FROM \$32,490 + ORC



**R 1300 GS**  
FROM \$35,990 + ORC



**R 1300 GSA**  
FROM \$39,990 + ORC

## Authorised BMW Motorrad Dealers

**CMG Motorcycles Christchurch**  
122 Saint Asaph Street,  
Sockburn  
(03) 353-6383  
ride@cmgmotorcycles.co.nz  
cmgmotorcycles.co.nz

**Continental Motorrad Auckland**  
45-65 Wairau Road, Wairau Valley,  
North Shore  
021 406 326  
salesaki@cmbmw.co.nz  
continentalmotorrad.co.nz

**Continental Motorrad Wellington**  
138 Hutt Road  
Kaiwharawhara  
(04) 499 9030  
saleswlg@cmbmw.co.nz  
continentalmotorrad.co.nz

**Experience Motorcycles Auckland**  
625 New North Road  
Kingsland  
(09) 845-5950  
sales@experiencemotorcycles.co.nz  
experiencemotorcycles.co.nz

**McIver & Veitch Dunedin**  
112 Crawford Street  
(03) 477-0236  
sales@mciverandveitch.co.nz  
mciverandveitch.co.nz

**Mount Motorcycles Tauranga**  
23 Totara Street  
Mount Maunganui  
(07) 575-4190  
sales@mountmotorcycles.co.nz  
mountmotorcycles.co.nz

**Road and Sport Motorcycles Hamilton**  
381 Te Rapa Road, Te Rapa  
(07) 958 1400  
sales@roadandsport.co.nz  
www.roadandsport.co.nz

# Coming Events - Details on our Website

## SIRAG 2026 - 13<sup>th</sup>-15<sup>th</sup> November 2026



### 2026 - South Island RAG Rally, Brightwater - 13th-15th of November 2026

Updated: 09/04/2026 South Island RAG Rally: 13th-15th of November 2026 Brightwater! This year we'll be at the Top of the South Island Registration and Full details coming soon... Registrations opening soon HERE - It's sure to be another exciting SIRAG! This event is being organised by Anja Claus, Area Rep, Top of the South, with

Find out more



## 2027 AGM/Rally - 5<sup>th</sup>-8<sup>th</sup> February 2027



### 2027 - National Rally/AGM, (North Island), Friday 5th - Monday 8th February 2027

Updated: 14/02/2026 Waikato BMWMC AGM Rally - Friday 5th-8th February 2027: Save the dates - Details and registration links will follow: Email any questions to [agmrally@bmwmc.nz](mailto:agmrally@bmwmc.nz) Accommodation - TBC: Region: Waikato We look forward to another great AGM and National Rally and seeing you there! Click Here to Register Online Now. Please, contact us if

Find out more



## THE BIKE MAINTENANCE SHOP NOW LOCATED BETWEEN AUCKLAND AND HAMILTON

Same trusted BMW expertise! Now serviced from Te Kauwhata. Central access for riders across the upper North Island, without the city hassle.

*Why choose us?*

- ✓ **BMW SPECIALISTS**  
Over 30 years of hands-on experience with BMW motorbikes.
- ✓ **PRECISION SERVICE**  
Quality, efficiency, and attention to detail in every job.
- ✓ **AUTHORISED REPAIRS**  
Approved by all major insurance companies.

**Call 021 128 5546**  
or [visit thebmshop.nz](http://thebmshop.nz) to book your service



# LIKE YOU, ESCAPING THE ORDINARY IS IN OUR BLOOD



We design insurance for those who live for the ride.

Nothing comes close to the journey. All that matters is being connected to the road or trail, and the bike. Some people don't get it. We do. Two, three or four wheels... whatever your bike, with Star Motorcycle, we'll help you protect your means of escape.

ESCAPE THE ORDINARY

Call: 0800 250 600

Visit: [starinsure.co.nz](http://starinsure.co.nz)





check my renewal date on my  
BMWMC membership card  
Any issue email,  
mymembership@bmwmc.nz



**SIRAG 2026**  
13<sup>th</sup>-15<sup>th</sup> November 2026

Save the Date  
[www.bmwmc.nz/sirag-2026](http://www.bmwmc.nz/sirag-2026)

Check the Events page on the  
website for the latest details.



Remember  
Write a note about my travels  
email it to  
editor@bmwmc.nz

# Marketplace - FOR SALE

To advertise, please email  
newsletter@bmwmc.nz

Marketplace is a service for members of BMWMC, NZ.

Advertisements will be accepted from members, commercial traders and non-members when it is considered in our members' interest to do so. No charge is made for Marketplace advertising. The Editor and Executive reserve the right to reject or modify any advertisement considered inappropriate and take no responsibility for errors or omissions, the quality of items, claims made, or for any transactions that ensue.

Advertisements run for approx. 3 months from the date first published unless otherwise arranged with the Editor.

## Motorcycle Number Plates for Sale:

Please share any unwanted plate that you wish to sell?

Advertised on behalf of others.

If any are of interest, please email

newsletter@bmwmc.nz and we'll put you in touch.



R13GS is offered at \$1,170

Certificate and transfer sale only



BMW 2U - \$750 - 1 Plate available



WE BMW - \$750 - 2 Plates available

\* Images for  
illustration only



# BMW Motorcycle Club

## New Zealand 1975 - 2025



BMW Motorcycle Club  
New Zealand



*Making Life a Ride!*



**NO IFS.  
NO BUTS.  
MAKE LIFE A RIDE.**

Whatever you do, throw yourself into it. Make the best of it.  
Because then you'll reach higher than you ever thought possible.  
Get the right gear for it at [bmw-motorrad.com](http://bmw-motorrad.com)

### IMPORTANT NOTICE

The BMW Motorcycle Club New Zealand is an organisation where members come together to enjoy rides to nominated destinations and participate in social occasions. The ride organiser nominates the destination and any regrouping points along the route, but has no control over how riders behave on the road. Club rides are not competitive events.

#### Riding/Attendance Code:

##### 1. Personal Responsibility

All members riding on Club rides do so as individuals responsible for their own safety and must consider the safety of others on the ride.

##### 2. Motorcycle Condition

Members must ensure their motorcycles are safe and legal to ride, meeting at least Warrant of Fitness standards.

##### 3. Protective Gear

Riders, pillion, and sidecar passengers must wear at minimum:

- New Zealand Approved Motorcycle Helmet
- Sturdy footwear
- Gloves
- Clothing capable of offering protection in the event of an accident

##### 4. Assisting Others

Members are expected to assist anyone experiencing a mishap during a ride.

##### 5. Ride Organisation

Ride organisers will nominate the destination, regrouping points, and other stops. Organisers are not responsible for the behaviour or safety of other riders.

##### 6. Riding Pace

Riders must ride at a speed and in a manner comfortable to them. Do not exceed your personal comfort limits.

##### 7. Route Familiarity

Riders unfamiliar with the route should arrange to follow another rider who knows the way and rides at a comfortable pace.

##### 8. Group Riding Formation

Riders travelling as a group should adopt a staggered formation with a safe following distance:

- Dry conditions: approximately two seconds behind the rider in front
- Inclement conditions or loose surfaces: longer than two seconds

##### 9. Participation at Own Risk

Neither the Ride Organiser nor the Club is responsible for participants' safety. All participants travel on public or private roads at their own risk and must comply with all applicable Road Rules and Laws.

##### 10. Photography & Media Permission

By attending any Club ride or event, members consent to photographs, videos, or other media being taken of them by any person present. These images may be used in Club publications, social media, or promotional materials. The Club is not responsible for the use of any images taken by third parties.

# Our wonderful Team of BMW Motorcycle Club NZ volunteers



**President**  
Colin Gates  
president@bmwmc.nz



**Vice President**  
Stephen Parkinson  
vicepresident@bmwmc.nz



**Secretary**  
Sue Duncan  
secretary@bmwmc.nz



**Treasurer**  
Pieter Holl  
treasurer@bmwmc.nz



**Membership Secretary**  
David Oldershaw  
membership@bmwmc.nz



**Area Rep Liaison**  
Ian Macartney  
arl@bmwmc.nz

**Northland Rep**  
Ian Macartney  
northland@bmwmc.nz



**Waikato AR**  
Chris Townson  
waikato@bmwmc.nz

**Auckland Rep**  
Stephen Parkinson  
auckland@bmwmc.nz



**Bay of Plenty AR**  
Alan Belworthy  
bayofplenty@bmwmc.nz



**Taranaki AR**  
Phil D'ath  
taranaki@bmwmc.nz



**Rangitikei AR**  
Murray Petherick  
rangitikei@bmwmc.nz



**East Coast AR**  
Alan Robinson  
eastcoast@bmwmc.nz



**Wellington/Wairarapa AR**  
Denis Hulston  
wellington@bmwmc.nz



**Top of the South AR**  
Anja Claus  
topofthesouth@bmwmc.nz



**Canterbury AR**  
Jason Batchelor  
canterbury@bmwmc.nz



**Southern AR**  
Tharon Knoetze  
southern@bmwmc.nz



## Area Representatives



### **NORTHLAND**

Ian Macartney  
027 281 0242  
northland@bmwmc.nz

### **AUCKLAND**

Stephen Parkinson  
021 989 092  
auckland@bmwmc.nz

### **WAIKATO**

Chris Townson  
027 390 4239  
waikato@bmwmc.nz

### **BAY OF PLENTY**

Alan Belworthy  
027 496 0748  
bayofplenty@bmwmc.nz

### **TARANAKI**

Phil D'Ath  
027 278 6770  
taranaki@bmwmc.nz

### **RANGITIKEI**

Murray Petherick  
027 433 6657  
rangitikei@bmwmc.nz

### **EAST COAST**

Alan Robinson  
027 432 4503  
eastcoast@bmwmc.nz

### **WELLINGTON/WAIRARAPA**

Denis Hulston  
027 443 3604  
wellington@bmwmc.nz

### **TOP OF THE SOUTH**

Anja Claus  
027 711 1113  
topofthesouth@bmwmc.nz

### **CANTERBURY**

Jason Batchelor  
027 429 5905  
canterbury@bmwmc.nz

### **SOUTHERN**

Tharon Knoetze  
021 034 1760  
southern@bmwmc.nz