







BMW Clubs  
International Council



BMW Motorcycle Club  
New Zealand



#### EDITORIAL COPY TO:

Colin Gates  
[newsletter@bmwmc.nz](mailto:newsletter@bmwmc.nz)

#### OTHER CORRESPONDENCE TO

The Secretary  
BMWMCNZ  
PO Box 109-245  
Newmarket  
Auckland 1149  
New Zealand

#### PRESIDENT

Chris Souness  
021 494 952  
[president@bmwmc.nz](mailto:president@bmwmc.nz)

#### VICE PRESIDENT

Stephen Parkinson  
021 989 092  
[vicepresident@bmwmc.nz](mailto:vicepresident@bmwmc.nz)

#### SECRETARY

David Fish  
021 927 901  
[secretary@bmwmc.nz](mailto:secretary@bmwmc.nz)

#### TREASURER

Colin Gates  
027 9222 350  
[treasurer@bmwmc.nz](mailto:treasurer@bmwmc.nz)

#### MEMBERSHIP SECRETARY

Dave Oldershaw  
029 200 3679  
[membership@bmwmc.nz](mailto:membership@bmwmc.nz)

#### AREA REP LIAISON

Ian Macartney  
027 281 0242  
[arl@bmwmc.nz](mailto:arl@bmwmc.nz)

#### BMWMC GEAR

[shop@bmwmc.nz](mailto:shop@bmwmc.nz)

#### PRIVACY OFFICER

[privacy@bmwmc.nz](mailto:privacy@bmwmc.nz)

**THANK YOU for your  
feedback and stories**  
[feedback@bmwmc.nz](mailto:feedback@bmwmc.nz)

#### Contents

- 3 New Members, last month (below)
- 4 President's Podium
- 6 Area Reports Start
- 28 AGM 2026 Agenda
- 38 Events
- 40 BMW Motorrad Corporate Communications
- 44 Market Place
- 47 Area Representatives v

## Welcome to our New Members

We hope you'll take part in many of your local and national events. Your Area Rep will be pleased to introduce you to other members in your area. Our monthly newsletter is an open forum for all members. If you fancy a story and/or photos published about your ride, the rebuild of your bike, a book you might have read or a movie you have seen lately, or just want to get something off your chest about how the club is going, then please email/phone the Editor no later than the 2<sup>nd</sup> day of the month.

**We forward to your contributions.**

**Please Note:** Any material intended for publication in the newsletter should reach the Editor no later than the 2<sup>nd</sup> day of any month but the earlier the better. The Newsletter is an open forum for all members. Views expressed by members may not necessarily represent the views of BMWMC. Publication of all material is subject to the Editor's discretion. Photos are courtesy of article authors and/or usually credited when known, unless requested otherwise.

**Cover picture:** Father Christmas riding a GS

**Photo by:** Illustration by AI

**Date:** December 2025





BMW Clubs  
International Council



BMW Motorcycle Club  
New Zealand



## A Very Warm Welcome to:

BOYCE

BROWN

DYSART

ELLIS

HILSTON

HOWARD

HUNKIN

HUNT

INNES

LANGE

MALE

MCSHANE

SLEEGERS

WALSH

WESTON

WILSON

WOLBECK

Courtney

Jim

Andrew

Phil

Ewan

Tony

Edward

Simon

Levi & Hazel

Serena

Simon

Hazel

Henricus Petrus

David

Simon

Alex

Andreas

AUCKLAND

BLENHEIM

AUCKLAND

HAMILTON

INVERCARGILL

AUCKLAND

AUCKLAND

WELLINGTON

PAHIATUA

INVERCARGILL

AUCKLAND

PAHIATUA

AUCKLAND

AUCKLAND

WHANGAREI

AUCKLAND

MANGAWHAI





## President's Podium

Chris Souness



BMW Motorcycle Club  
New Zealand



# January 2026

## W

elcome to 2026!

I hope everyone had an awesome Christmas and New Year with plenty of time to relax and catch up with family and friends.

I managed to sneak in a few rides over the break, including a short trip down to Continental Motorrad for a service ahead of our big adventure to Cromwell for the Annual Rally and AGM. Whilst I hadn't clicked over the 10,000K distance to trigger the service it had been over 14 months so there were many time dependent service items that needed looking at. I have to say it does sometimes feel that these service items are not needed to be done however fluids and components degrade and lose effectiveness due to age, environmental exposure, and chemical breakdown, regardless of the distance your bike had covered. So, it's always recommended to adhere to the manufacturer's time-based schedule as it's essential for safety, optimal performance, and preserving the motorcycle's value over the long term.

I'm really excited about our rally in Cromwell. It's been a while since I've done a long-distance ride, so fingers crossed the neck and bum muscles hold up, wish me luck! We've heard from both Martin and Barry the organisers that the venue is almost fully booked and registrations are due to close. If you're planning to join us, make sure you get your registration and accommodation sorted ASAP.

Next up after the National Rally is the North Island Rag Rally, happening at Taylor Lodge from Friday 27<sup>th</sup> to Sunday 29<sup>th</sup> March. Normally this rally lines up with the end of







daylight saving, but Easter threw a spanner in the works this year, so we've booked the weekend before. It's always a fantastic event, registration forms will be up on the website very soon.

Wherever your rides take you over the next few weeks, ride safe and to those coming to the National Rally have a safe and enjoyable journey. I can't wait to catch up with you all there!

All the best.

Chris







## The Old Forge in Te Aroha



## Roads to Matamata

A fantastic turnout of 22 people joined us for our Christmas lunch at The Old Forge in Te Aroha. It was great to see so many familiar faces along with a few new ones as well.

The day kicked off with nine of us meeting in Matamata for a ride over to lunch. The lineup included six BMWs, one Moto Morini, and one very nice VW trike, which was certainly a talking point wherever we stopped. The ride took us out onto some of the gravel back roads around Matamata. It was

good to get back out on the loose stuff again, even with the extra ballast of a passenger on the back! Time got away from me a bit, so we cut the ride slightly short to make sure we arrived at The Old Forge on time to meet everyone else.

Lunch, as always, was well catered and I think everyone left happy and well fed. With such a great turnout, the club's donation didn't stretch too far, but everyone enjoyed the free drink it covered.





I'd also like to say a big thank you to Barry and Hannah from Road and Sport for the dry bags they kindly donated for us to give away.

Finally, I wish everyone a very happy & prosperous New Year.

Chris #3983



# Taranaki Tales

Scott Mills - taranaki@bmwmc.nz



**H**appy New Year, team. I hope you have all recovered from the festive festivities and are well on the way to completing your New Year's resolutions. I know I've broken all of mine already, so I'm hoping to get back on track before this year disappears....

Al, Chris, Gibbo, Ray and I set off to do some twisty Taranaki back roads on Sunday, the 11th of January. Rain was on the radar for the afternoon, so I only planned a 2-hour ride for the morning so we wouldn't get wet in the afternoon showers that were predicted. Safe to say the roads out the back of Inglewood through to Stratford did not disappoint. They would have to be some of the best roads to ride on a motorbike in New Zealand. The scenery is magnificent and the roads twisty. Some of you may remember the backroads tarmac tour from the Rally we hosted a couple of years ago, so you will know what I am talking

about.

We took lunch at the Distillery Café in Stratford, which was delicious. Well worth the stop if you are in Stratford, as they have a wonderful gallery also.

The wet weather never eventuated, so Gibbo took us on an around-the-mountain tour back to his house in Oakura. Light refreshments were served, and many topics were discussed.

I'm looking forward to our next ride in February. Those going to the AGM Rally, Enjoy! I hope to get to the next one.

Cheers, Scott





# Rangitikei Roundup

Murray Petherick - rangitikei@bmwmc.nz



Barbara's garden tour.

With our end-of-year function scheduled to take place on our normal ride day a mid-week ride was set up for December 10<sup>th</sup>, for those who were available.

A small group of six bikers and one pillion, including Denis and Ian from Wellington and our 'new' member, Uta (from Marton), met at the Ginger Bird café in Colyton.

The lunch destination was the Awastone Café, near Mangaweka, and the route took us up the Pohangina Valley and then across to the café. The weather was fine and we enjoyed a good ride up the Valley, stopping near the top of the valley for a leg stretch and to check what was happening with the Gatwick Express train carriages. The two carriages have been parked in a paddock near the road for several

years but the reason for them being there remains unclear. Someone must have had a plan for them, as it would have cost a significant amount to get them onto the site. A shed has been constructed nearby, and there was a bit of activity on site, but we were not cheeky enough to rock up and ask what was going on. The mystery remains!

We had a pleasant lunch stop at the café and afterwards headed for home, some of us going down through SH54, Vinegar Hill, only to encounter a significant re-sealing job (and lengthy time delay) just north of Feilding. Denis and Ian headed home via the Wairarapa.

Thanks team, for a good day out.

Cont...



## 2025 End of Year Function



Gatwick Express

This time the function was hosted by Barbara and Barry at their 'Helston Gardens' home on 14th December.

The weather was fine, although a little on the cool side, and approximately 20 people gathered and enjoyed a very pleasant occasion.

Barbara's garden is a 'show piece labour of love'. She often hosts organised garden tours by various groups and the gardening enthusiasts amongst us were able to tour the garden and admire the display. Thanks go to the Club for the financial support for the occasion; it was appreciated.

**Murray #2690**



Lunch at Awastone cafe



Barbara's garden tour - So lovely, we showed it twice!



# Rangitikei Roundup

Barry Petherick - rangitikei@bmwmc.nz



Mini bikes heading for the track

## Rangitikei Route Rippers November trip..

Several months earlier, at a club brunch function, the discussion turned to the upcoming SI RAG. Phone calendars were consulted and work commitments considered. Ultimately, the conclusion was that we didn't all have the time available to make the most of a sojourn south, and if we undertook it, a lot of the trip time would be devoted to ferry crossings.

With the idea of a few days on the bikes proving to be very appealing, six of us decided to undertake a wee NI-based tour.

One Wednesday saw us gather at the SH4 café at Upokongaro for

lunch before proceeding up the Parapara road to the renamed Waimarino township. Recent weather had been very mixed, and it was a pleasure to be cruising along with air temps of 23 °C. Dinner needs were sourced at the Four Square, then it was off past the mountains to Omori, where we enjoyed the comfort and hospitality of Joy and Robin's bach for the night.

Peter T had investigated our route for Thursday and initially led us up the western access to Taupo for a leisurely coffee. On the bikes again and refuelled, Peter led us through Broadlands, turning east to skirt behind Reporoa, out to Waiotapu, then east again on 30 to Murupara, north to Galatea and into Whakatane. We



had purchased picnic lunches and enjoyed them on the banks of Lake Rerewhakaaitu. The scenery was superb, and the back roads were quiet. Temperatures were around 28 °C and were starting to take their toll late afternoon. A supermarket supply stop, then onto Ohope beach, where we had a Bookabach rental for the night. This was a great setup on the beachfront.

Friday morning on the road with a first stop being coffee at Opotiki. Lots of bikes at the café and positive reports about road conditions ahead as we were to travel through to Gisborne via the Waioeka gorge. We again carried picnic lunches. The ride through the gorge was, as always, excellent and we detoured off the main route, riding out from Matawai to Motu for our picnic. High temperatures and clear skies again. By now, not a single garment was still housing a liner and that would be the case for the rest of our trip as hot and settled weather persisted. The ride into Gisborne was uneventful, just busy with traffic as we navigated to our motel.

Saturday's route had prompted a bit of discussion with the Tiniroto option being considered. In the end, we stayed on the main road and popped out to Mahia where we found Gabe's coffee cart. The peninsula looked stunning with a perfect day showing it off nicely. Cruising down to Wairoa it was a blessing to enjoy lunch in an air-conditioned café. Back on the road, we stopped for a brief stretch at Lake Tutira, then off to find our Havelock North motel.

Sunday was our return home day and from Hawke's Bay, there is of course no option better than the





Gentle Annie to Taihape. About an hour in and just past the Gentle Annie itself, we found what appeared to be an old Roadman's hut and stopped for a water and a snack. Lounging in the sun was very relaxing for a while and then it was down the road past Ngamatea Station, Erewhon Station, Moawhanga and into BP Taihape. The ride was brilliant. Post Taihape the Whanganui boys (Peer N, Neville P), peeled off at Hunterville, Murray P and I departed at Sanson for Levin, and the Palmy boys (Peter T, Robin W) continued into Palmerston North.

A great little road trip; amazing roads, mountains, lakes and beaches, super weather and the company of wonderful friends. All the bikes performed flawlessly. I put about 1400km on my new F900XR and couldn't be happier with it. **Barry #3104**



**Barry P, Peer N, Robin W, Murray P and Neville P (front)**





# Wellington & Wairarapa Wanderings

Denis Hulston - [wellington@bmwmc.nz](mailto:wellington@bmwmc.nz)



## Club Social, Meet & Eat at the Petone Club - 1<sup>st</sup> December

First day of the month - an early start to our December club activity with food and regular good company at the Petone Club. There's always lots to talk about.

## Sunday 7<sup>th</sup> December - Christmas lunch

Fifteen met for lunch at Denis & Annie's to celebrate a good year of riding and social activity. With other commitments, our numbers were down from previous years; however, that made for more

space in our living room when the wind got a bit cool on the deck. Good food and company with club friends - a recurring theme of the year.



Christmas lunch - celebrating a great year of riding and friendships





## Sunday 7<sup>th</sup> December - Rangitikei ride

We had contemplated a Turakina Valley ride; however, Rangitikei riders were organising a ride, so we agreed to meet them at the Gingerbird Café, Colyton to plan a route. It was an early 7.30am for Wellington riders, and we only had two – Ian M and Denis H. However, we arrived in good time for coffee and food at the Gingerbird and the chance to catch up with another four Rangitikei riders and Jeanette as pillion with Murray.

We had a stunning ride up the eastern Pohangina Valley – a perfect day for riding and spectacular vistas into the Ruahines and surrounding river valleys. It was one of those days when you want to stop and photograph every new vista, but the road needs your attention. We arrived at the Rangitikei River for lunch at the Awastone, Mangaweka. Ian and I returned via the Pahiatua Track through the Wairarapa with a

Cont...



recovery coffee stop at Pukaha Mt  
Bruce Wildlife Reserve before the ride

back over the Remutaka, a 500-  
plus km ride.



Pohangina Valley

**Sunday 14<sup>th</sup> December**

**Wairarapa ride – Whareama, Ngaumu Forest impromptu ride**

Thanks to Richard Murcott for organising this ride, and for his knowledge and advocacy for access to this area. Richard's circuit route took us via the Whareama Public Access easement through Ngaumu Forest east of Waiuioru. The reserve in here has been designated for many years, but was inaccessible until some of the work done by Richard assisted access through the forest. A gravel route with some rutting by forest trucks (no sign of them on our ride today). We rode Holmwood Road to the Holmwood Storeroom for an excellent lunch. The after-lunch circuit was via Fernglen, with the

farmer's permission to use farm tracks back into the forest area. Quite a steep, but manageable route with some great views to the coast east. A good ride and good company.

Unfortunately, my GS700 clutch gave up on the hill climb. Thanks to the team who helped me get it back to level ground. I limped back toward Masterton with the hope that I could get the bike back home. However, I had to call on Tibsy and Anne with a trusty trailer, and I and the bike arrived home safely. Many thanks, Tibsy & Anne.





Whareama through the forest



Whareama – Richard sharing the background on access to this area

Cont...





Lunch at Homewood Storeroom



Homewood Storeroom regroup for the next stage

## 2025 Riding Stats

We've had some great riding in 2025. We rode 8,850km on 27 club rides. We cancelled or postponed 7 rides. There are favourite routes in Wellington, Wairarapa and Rangitikei – great riding and company.

Thanks to all who organised and participated. Welcome to all

Wairarapa-based riders now that Tibsy is no longer riding – we share some great riding territory.

**Denis #3131**





**BMW  
MOTORRAD**



# MCIVER & VEITCH THE SOUTH'S AUTHORISED BMW MOTORRAD DEALER

[mciverandveitch.co.nz](http://mciverandveitch.co.nz)

**MAKE LIFE A RIDE**



**Authorised BMW  
Motorrad Dealer**

**McIver & Veitch**  
112 Crawford Street  
Dunedin  
(03) 477-0236  
[sales@mciverandveitch.co.nz](mailto:sales@mciverandveitch.co.nz)  
[mciverandveitch.co.nz](http://mciverandveitch.co.nz)

**MCIVER  
&  
VEITCH**  
*Motorcycling Since 1932*



# Top of the South Beemers/Te Tauihu

Gretchen Holland - [topofthesouth@bmwmc.nz](mailto:topofthesouth@bmwmc.nz)



## Brown River Reserve Tea Ride



We got to the Brown River Reserve picnic area in Rai Valley just as the sun was going behind the hill so a swim straight away was necessary – only yours truly braved it, and it was gorgeous. Contrary to WR's doomsday email, I didn't contract any dreaded diseases. The place is a gem hiding in plain sight – we have all ridden past it many, many times, but no one else has ever noticed it.....

Gretchen #949

Scribe – Gretchen

Picnickers were:  
Peter, Gretchen, Anja, Lew  
Ross & Teresa, John and Rick



## Christmas lunch



As I was 'retiring' from the Area Rep role at the end of the month, I decided it might be nice for Tony and me to host this year's Christmas lunch instead of heading out to a café like we usually did. It was a lovely day, so we were able to sit outside. The back yard looked like a dealer's lot as everyone came on a bike, even one push bike.

Afterwards, a lot of us rode the 16km gravel up to the Maitai dam, and some continued over the Maungatapu to Rai Valley for an ice cream (after all that dessert we'd had!! 'But you have to keep the tradition').

A big thanks to the Club for their generous contribution to the meal. It was appreciated.

We were Richard, Peter, Gretchen, Tony, Anja, John, Trudi, Rick, Trevor, Dale, (sadly Odette was sick), Andy, Victoria, Shep, Revti.



Cont...



# Top of the South Beemers/Te Tauihu

Gretchen Holland - [topofthesouth@bmwmc.nz](mailto:topofthesouth@bmwmc.nz)



Faces of Trevor, Anja and Richard

## ARCADIA MOTEL

CHRISTCHURCH

Comfortable, spacious affordable accommodation



# FREEPHONE 0800 272 23 42

564 Ferry Road, Woolston, [www.arcdiamotel.co.nz](http://www.arcdiamotel.co.nz)  
Geoff Lester 027 285 1293





# BMW MOTORRAD



# BOXER BRILLIANCE

## MAKE LIFE A RIDE

Colour options shown and models are subject to availability; options and colours may differ from images (Please contact your BMW Motorrad dealer). All prices, availability and specifications are subject to change without notice by BMW Motorrad New Zealand. Valid while stocks last.



**R 12 G/S**  
FROM \$30,390 + ORC



**R 1300 RT**  
FROM \$43,990 + ORC



**R 1300 RS**  
FROM \$33,490 + ORC



**R 1300 R**  
FROM \$32,490 + ORC



**R 1300 GS**  
FROM \$35,990 + ORC



**R 1300 GSA**  
FROM \$39,990 + ORC

### Authorised BMW Motorrad Dealers

**CMG Motorcycles Christchurch**  
122 Saint Asaph Street,  
Sockburn  
(03) 353-6383  
[ride@cmgmotorcycles.co.nz](mailto:ride@cmgmotorcycles.co.nz)  
[cmgmotorcycles.co.nz](http://cmgmotorcycles.co.nz)

**Continental Motorrad Auckland**  
45-65 Wairau Road, Wairau Valley,  
North Shore  
021 406 326  
[salesaki@cmbmw.co.nz](mailto:salesaki@cmbmw.co.nz)  
[continentalmotorrad.co.nz](http://continentalmotorrad.co.nz)

**Continental Motorrad Wellington**  
138 Hutt Road  
Kaiwharawhara  
(04) 499 9030  
[saleswlg@cmbmw.co.nz](mailto:saleswlg@cmbmw.co.nz)  
[continentalmotorrad.co.nz](http://continentalmotorrad.co.nz)

**Experience Motorcycles Auckland**  
625 New North Road  
Kingsland  
(09) 845-5950  
[sales@experiencemotorcycles.co.nz](mailto:sales@experiencemotorcycles.co.nz)  
[experiencemotorcycles.co.nz](http://experiencemotorcycles.co.nz)

**McIver & Veitch Dunedin**  
112 Crawford Street  
(03) 477-0236  
[sales@mciverandveitch.co.nz](mailto:sales@mciverandveitch.co.nz)  
[mciverandveitch.co.nz](http://mciverandveitch.co.nz)

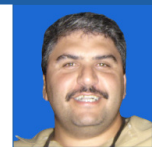
**Mount Motorcycles Tauranga**  
23 Totara Street  
Mount Maunganui  
(07) 575-4190  
[sales@mountmotorcycles.co.nz](mailto:sales@mountmotorcycles.co.nz)  
[mountmotorcycles.co.nz](http://mountmotorcycles.co.nz)

**Road and Sport Motorcycles Hamilton**  
381 Te Rapa Road, Te Rapa  
(07) 958 1400  
[sales@roadandsport.co.nz](mailto:sales@roadandsport.co.nz)  
[www.roadandsport.co.nz](http://www.roadandsport.co.nz)



# Southern Stories

Tharon Knoetze - [southern@bmwmc.nz](mailto:southern@bmwmc.nz)

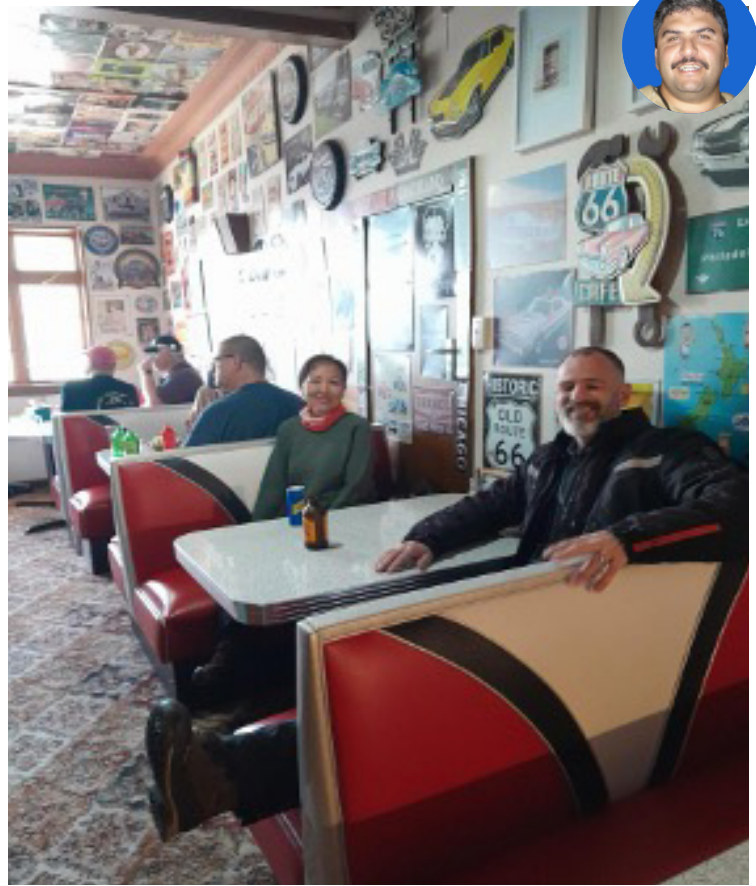
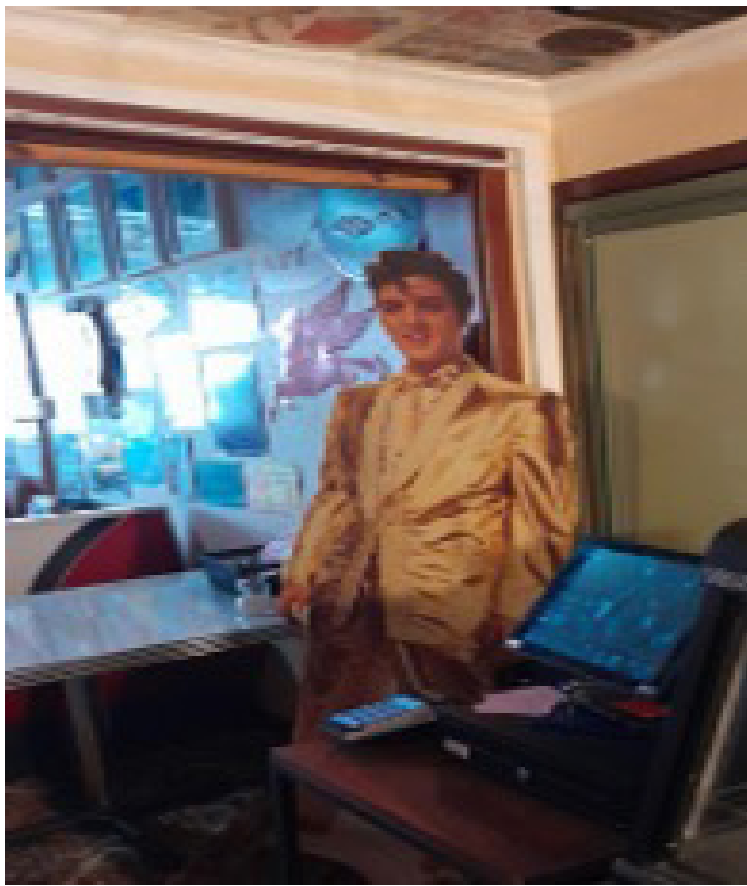


Our Christmas lunch ride this year took us off the beaten track to the very rural Southland town of Waikaka—one of those places that perfectly captures the spirit of small-town New Zealand. With just a pub, a diner, and a small petrol station making up the commercial heart of the town, it felt like a proper escape from the busy world.

We settled in at the Waikaka Diner, and what a great choice that turned out to be. The food was genuinely excellent, served with friendly hospitality that made us feel right at home. It's always a pleasure to find a hidden gem like this, especially in a town where quality and care clearly matter.







We had a great turnout, with 13 people, making the journey, sharing good food, plenty of laughs, and the kind of camaraderie that makes riding together so special. It was a fitting way to wrap up the year and celebrate the festive season.

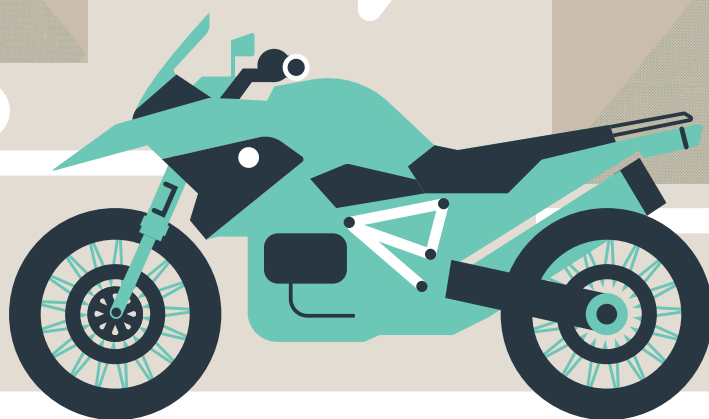
We hope everyone had a wonderful Christmas surrounded by family and friends. May 2026 be filled with many more rides, good roads, and time spent with people who share our love for motorcycling.

Stay safe and keep it on two wheels.

Tharon #2595



I'll SHOW  
YOU PARTS OF  
THE WORLD  
OTHERS' FEAR



Just like a BMW R1200, every motorcycle has a unique character. Which is why we design insurance that's anything but off-the-shelf. If you have a bike that helps you escape the ordinary, talk to us about customised insurance you won't find anywhere else.

**Star Insure Morotcycle. It's the insurance your bike would choose.**

ESCAPE THE  
ORDINARY



0800 250 600



[starinsure.co.nz](https://starinsure.co.nz)

 **starinsure**  
Motorcycle



# A Shakedown Ride for Cromwell

Dave Morris



A quick write-up to catch the "mail" (Read, newsletter).

My brother has a piece of land between Ohura and Matiere (a stone's throw from Taumarunui), and Matiere is a French surname, apparently, not a Maori word. (According to the locals. Pronounced Maa-tree)) So I took the opportunity to give the bike a good run.

From the Hutt Valley, I went straight up the main route to Waioru and National Park. The bike went well. The next day, at Ohura, I decided to move the bike nearer to my tent, but alas, a flat battery.

I took the battery out and went down to Taumarunui ("...on the main trunk line"), and after two bike shops, the third said he could get one down from Hamilton overnight and, "I'll ring when the battery has arrived and charged up." I was keen to get the identical battery as already in the bike. And so it

was, \$230. It was much the same as used in those farm quad bikes, so Taumarunui is a good place to buy; mine came down from Hamilton.

I spent about half a day reassembling the bike in atrociously hot conditions. Rode home that afternoon (as originally planned and stayed the night at the National Park. I had noticed there were signs around the area showing the way to Waimarino. I knew there was an area called that, but I did not know that National. Park was the place.

On this trip, I had a lot of positive comments about the bike, e.g. "Nice bike!" Even though the bike is 22 years old. Old enough to hear, "I've never seen one of these." Usually non m/cycle riders. But I'll never get a concours award at the AGM as long as Barry of Alexandria brings his Cruiser!

Dave Morris





# **AGENDA**

## **2026 ANNUAL GENERAL MEETING**

### **For the BMW Motorcycle Club of New Zealand Inc.**

To be held on Saturday, 31<sup>st</sup> January 2026, from 6:00 pm

- 1. Welcome and Apologies.**
- 2. Minutes of the previous Annual General Meeting**
- 3. President's Annual Report from the Board**
- 4. Treasurer's Financial Statements for the previous Financial Year, including:**
  - Income and Expenditure
  - Balance Sheet for the financial year ending 30<sup>th</sup> September 2025
  - Guidance on the expected Income and Expenditure for the current year
- 5. Election of Officers**
  - President: (One Nomination received)
    - Colin Gates – Wellington
  - Secretary: (One Nomination received)
    - Sue Duncan – Waikato
- 6. Remits**

No remits submitted
- 7. Other Business**

No other business submitted

As no remits or other business have been submitted, the AGM will close after the election of Officers.

The Board will remain immediately after the AGM for a more informal Q&A session.





# HARVEST HOTEL & EVENTS VENUE

*Cromwell, Central Otago*

## 2026 Annual Rally and AGM – Central Otago

**W**e are returning once again to Cromwell, in the heart of Central Otago, commencing Friday afternoon, January 30<sup>th</sup>, and concluding Monday morning, February 2<sup>nd</sup>.

Book now - Our venue, The Gate, has been booked exclusively for our event, subject to bookings made by the end of December.

It's a terrific location that's recently been refurbished, along with much of the Cromwell town centre just across the road. Be as busy or as relaxed as you like in this fantastic setting!

### Accommodation

The Gate is an upmarket motor lodge with very comfortable, quiet rooms, all offering great views of the surrounding mountains and vineyards. There is plenty of safe parking for our bikes. The lodge is close to Lake Dunstan with excellent walks in every direction for those with sore bottoms from riding!

### Dining & Local Attractions

The on-site café, Forage, is open from early morning until late in the day,

catering for all tastes and budgets.

Want to stretch your legs? Simply cross the road to explore Cromwell's cafés, bars, and eateries, or visit The Wooing Tree for wine tasting and dining.

### Rides & Activities

Throughout the Rally weekend, there will be organised road and adventure rides. You'll find ride options and route lists at check-in. Prefer to explore on your own? The choices are endless — from Highlands Park to historic townships, Central Otago iconic cafés, and even a chance to visit Paradise!

Please, contact The Harvest Hotel directly to book your room.

Our Room Rate: \$260/room/ night

Booking code: BMWMC AGM Rally

Phone: 03 445 1777

There are several room configurations, so you can choose to room-share. Please let Reception know when booking.



# BMW RALLY - Cromwell 2026

Thank you to Star Insurance, our sponsors.

Welcome to the 2026 BMWMC Rally & AGM brief.

Don't leave your decision to book your room any longer! The end of the year is not far away!

The venue is "The Gate" which is booked out to us for that period. It is a terrific venue which just been refurbished and developed, as has much of the Cromwell town centre across the road, and you will be able to be as busy or as lazy as you like in this fantastic location. The Gate is

an upmarket motor lodge with very comfortable, quiet rooms, all with great views of the surrounding mountains and vineyards, and of course there is plenty of safe parking for our BMWs. It is also very close to Lake Dunstan and there are great walks in all directions for those whose bottoms are sore from lots of riding!

The Gate has its own cafe, "Forage", which is open from early morning





until late in the day, and which caters for all tastes and wallets. If you want to stretch your legs a bit, cross the road and check out the cafés, bars and eateries of Cromwell. And don't forget "The Wooing Tree" vineyard and restaurant across the road for wine tasting and eating.

Over the Rally weekend there will be organised road rides and adventure rides—we will have lists of rides, both road and adventure, for you to choose from when you check in at The Gate. Of course, if you want to do your own thing, the choices are huge, from Highlands Park to the many cafés and historical townships and sites that abound in Central Otago. You will even be able to visit Paradise!

Please contact The Gate yourself for your room bookings. All rooms are the same price @ \$260.00 per room/ per night. There are several room configurations available so you will be able to room share. This means that the cost per person can be significantly reduced. Just make your wishes clear to Reception when you book.

Contact : Harvest Hotel at the Gate

### Items earmarked from BMW Motorrad NZ - thank you!

Description	Value \$	Qty
Boots Sonora GTX	579.00	1
Jacket Bavella	1,176.00	1
Pants Gerlos	818.00	1
Glove Tenda 2in1 GTX	388.00	1
Helmet Street X	804.00	1
Caps Boxer	58.00	2
Caps Motorrad	58.00	2
Raffle/Prizes TBC - *Subject to change.		



Phone: 03 445 1777 Booking Code BMW Rally for the discount.

Accommodation at the Gate is filling up fast. There are only a few rooms remaining please,  
**DON'T LEAVE IT TOO LATE!**

However, if you miss the remaining rooms, there are other accommodation facilities available, including five motels within 300 metres of The Gate.

They are as follows:

**Lake Dunstan Motel, Carrick Lodge Motel, Colonial Manor Motel, Asure Central Gold Motel, and Cromwell Getaway.**

In addition, there are other motels etc., a little further away.

Want to make your motorcycling holiday even better and even more memorable? And it's just down the road in Invercargill. The Burt Munro Rally begins on Wednesday, 4 February and finishes on Sunday, 8 February. What a great opportunity to join in and experience the biggest and best motorcycle gathering in Aotearoa!



# Annual Rally 2026



BMW Motorcycle Club  
New Zealand

## \*Road rides

\*All rides subject to change



**R1. GLENORCHY LOOP** - Cromwell, Queenstown, Glenorchy LUNCH 112 km, Arrowtown, Crown range Wanaka 121 km, Cromwell 53km Total 290km 31/2 hours non-stop but 6 hours with stops, lunch and pics, stunning ride to the back of Milford Sound plus beautiful Arrowtown then New Zealand's Highest pass to Stunning Wanaka waterfront and home.

**R2. HAAST RETURN** Cromwell to Lake Hāwea to Haast LUNCH 190 km, to Wānaka waterfront to Cromwell 194 km total 385 km. From the lakes of central Otago over mountains, beech forests to the ocean lunch at the Stags Head Haast then home via Wanaka waterfront, a lot of twists both ways and worth a return ride.

**R3. Macraes Loop**, Cromwell to Ophir to Hyde to Macraes, 165 km Lunch. To Ranfurly to Saint Bathans 125 km (approximately 15 km very good gravel) to Cromwell 86km, total 380 km. Travel the gold mining routes through central Otago, beautiful, easy, big sweeping roads, old and new gold mines, and little towns. Stunning and easy day in the sun.

**R4. Big Dunedin loop** (Pig Route) Cromwell - Roxburgh - Dunedin 224 km Lunch to Palmerston Ranfurly (pig Route, I'm jealous) Cromwell 239 km total 465 km This is a stunning day ride other than SH1, very few straights, magnificent views and the big endless corners of the pig route and great little towns and the huge Maniototo sky.

**R5. Gore Kingston Flyer Loop** Cromwell to Gore Via Tapanui 170 km Lunch to Lumsden to Kingston (you might meet the Kingston Flyer) to Frankton to Cromwell 213 km total 390 km. This is just a beautiful ride, no hard bits, no really long straights, very picturesque, great corners. And pictures or a ride with the Flyer 😎

**R6. Lindis** - Pig Route Loop Cromwell to Omarama to Oamaru 230 km lunch to Palmerston to Cromwell via pig route 240 km total 470 km Mountains twists lakes twists, SH1 to pig route and those huge sweeps and curves, jealous again.





## \*Gravel rides:

- G1. Gravel Skippers Canyon School Reserve.** Travelling through the Kawarau gorge to Arrowtown, then heading towards Coronet Peak, you travel for approximately 45 km on Tar-seal, then the excitement starts. Turning left on to the very narrow Skippers Canyon Road and you travel on a mostly firm surface to Skippers School reserve for lunch and pictures 25 k in and 25 k out 🤘. I would not call this a very technical ride, but it's narrow, and if you go off the riverside of the road, you won't be coming home. Toyota Corollas do this road and buses, and GSA1250s 2 up. If you're thinking about this, check out YouTube. Total 200k, allow 4 hours plus time in Arrowtown on the way home to Cromwell.
- G2. Nevis** is gravel and technical, and lots of water. This is a 70 km ride of about 50 km 4WD track, it includes numerous river crossings and requires a high level of caution and no cell phone coverage - do not do it on your own. We should have 2 or 3 members who could lead this ride, hopefully. You pop out at Garston, where you can have a coffee at the coffee bomb, then either go back the way you came 🤘 or Tar seal back through Queenstown to Cromwell 100km Total 180 km 5 - 6 hours? Once again, plenty to check out on YouTube.
- G3. Thompson Track,** Cromwell to Tarras 22km over Thompson gorge Rd to Omakau 30'ish km of Gravel, a bit of water and lots of gates and back to Cromwell 52 km. Total 110 km 4 hours? Check YouTube.
- G4. Raspberry Creek,** Mt Aspiring. One of my favourite little rides, Cromwell to Wanaka, then to the base of Treble Cone, 76 km of Tar seal, then about 40 km of interesting gravel and some nice little fords up to Raspberry Creek. This is a stunning country, the lunch with the sandflies, maybe a little walk, then the ride home. Total 240 km, 5 - 6 hours.

## Short rides:

- S1. Saint Bathans** and the ghost, Chatto Creek pub, home of the Chatto Creek motorcycle club, these guys ride every Thursday 52 weeks of the year, averaging 25 riders every time, the Hamlet of Cambrians ~ never been to a hamlet, this is your chance, it's stunning.
- S2. Cardrona** and another Ghost at the pub (just sold for 20+ million?). They need your custom. Arrowtown or Queenstown. What about Lake Hawea and visit the pub for the last time, being demo for 24 sections, 2 million each ~ just petty cash really 🤘.
- S3. Roxburgh,** see Barry at his favourite cafe. If you like pies, hunt down a Sangas pie, and you will never go to Fairlie again. All in all, in Central, we are so lucky to have so many rides. If anyone wants an 800 - 1100 km plus day ride, see me, I will be very jealous but can put you on an alpine loop, or something else...? 🤘



# BMW RALLY 2026

## Planned schedule

### FRIDAY

1.00pm	Registrations open at The Gate in the Conference Centre
1.00-6.00pm room.	Settle in & relax. Drinks from the bar can be charged to your room.
6.00-8.30pm	Tapas and other light food. Sponsored by STAR Insurance.

### SATURDAY

6.00am onwards	<b>SATURDAY</b> Breakfast - A Smorgasboard. Eat as much as you like! Bottomless coffee and tea.
8.00-9.00am	Bikes assembled by 8.00am for Concours d'Elegance judging.
9.00am - For All	<b>Group Photo. Please be there on time. Dress optional!</b>
9.30am	Gravel riders depart
10.00am-4.00pm	Road rides leave when ready. With lunch stops.
6.00pm	AGM in Conference Centre
7.30pm	Rally dinner

### SUNDAY

6.00am onwards	Breakfast. Smorgasboard.
8.00am	Bikes assembled for Gymkhana
9.30am	GS riders depart
10.30am	Road riders depart
6.00-8.30pm	Burgerfest; prize-giving; raffle draws

### MONDAY

6.00am onwards	Breakfast. Smorgasboard.
10.00am	It's all over ! Haere ra and safe travelling



# BMW MOTORCYCLE OF NEW ZEALAND

## NOMINATION FOR ELECTION TO OFFICE - AGM 2026

17:00, Saturday 21<sup>st</sup> December 2025

email nominations to: [secretary@bmwmc.nz](mailto:secretary@bmwmc.nz)



BMW Motorcycle Club  
New Zealand



### 1. Details of the Member Making the Nomination

Name: ..... Membership # .....

Address:  
.....

Signature ..... Date: .....

### 2. Details of Persons Nominated

Name: ..... Membership # .....

Address:  
.....

I nominate the above Nominee for the Committee Position of:  
  
\_\_\_\_\_

### 3. Nominee Acceptance

I acknowledge and accept the nomination shown above. I have read the Qualification for Officers document and certify that I am not disqualified under any clause therein.

Signature ..... Date: .....

### 4. Constitutional Requirement

Each year, the members of the Club eligible to vote shall, by ballot, elect the President, the Vice-President, the Secretary, the Treasurer, the Membership Secretary and the Members' Representative. Nominations shall be made by way of a written nomination signed by a current full, financial member and endorsed with the consent of the nominee. Nominations must be received by the secretary to enable publication in the last newsletter distributed before the day fixed for the Annual General Meeting. Should there be insufficient candidates for a position, nominations may be received at the annual general meeting, provided that no member can be elected who has not consented to be nominated.

*\*Committee roles are for a 2-year term; election is for those roles that have expired, as per the AGM notification.*

### 5. Nomination Delivery

All nominations must be emailed to the Secretary. A confirmation of receipt will be emailed in reply. If no confirmation is received, members are asked to check their spam folder and then text or email again to ensure the nomination has been properly received and recorded.

**Please scan/photograph the completed form and email it to: [secretary@bmwmc.nz](mailto:secretary@bmwmc.nz)**

Nomination forms **MUST** be received by **Sunday, 21<sup>st</sup> December 2025**, so that all candidate details can be sent out to all members with the formal notification of the Annual General Meeting. Nomination from the floor will only be accepted if there are no acceptable nominations submitted by the closing date.





# Notice of Annual General Meeting

**BMW Motorcycle Club New Zealand Incorporated. (BMWMC)**  
**Annual General Meeting 2026**  
**Saturday 31<sup>st</sup> January 2026 at 6:00pm,**  
**Harvest Hotel, 6 Barry Avenue, Cromwell, South Island.**

## Notice of Motions and Agenda Preparation

Any member of BMWMC intending to bring forward a subject for discussion, or to move a resolution at the AGM, must give written notice to the Secretary no later than 5:00pm on Sunday, 4 January 2026.

**The Secretary will accept notices as a document attached to an email sent to: [secretary@bmwmc.nz](mailto:secretary@bmwmc.nz)**

### Notices must:

- Clearly state the subject for discussion or set out the full wording of the resolution to be moved.
- Be dated and signed by both the mover and seconder.
- Be submitted by two current financial, full members of BMWMC.

Any subject or resolution submitted after 4 January 2026 will not be accepted.

The final AGM agenda, together with any notices of motion received, will be emailed to all members at their last known address and published on our website ([www.bmwmc.nz](http://www.bmwmc.nz)) no later than 10 working days before the AGM.

## Positions for Election

The positions of Vice President, Treasurer, Area Rep Liaison, and Membership Secretary were re-elected for a two-year term at the 2025 AGM.

The following positions are open for election at the upcoming AGM:

- **President** – incumbent Chris Souness, not standing for re-election
- **Secretary** – incumbent David Fish, not standing for re-election

**The Committee acknowledges and thanks Chris and David for their contribution and service to the Club and the Committee.**



These roles are open to any current member who wishes to be nominated.

The Committee encourages members who would like to contribute to the Club's governance to submit a nomination for one of the available positions.

In accordance with the Constitution, each elected role carries a two-year term.

Nomination Forms are available by email, website or clicking [HERE](#).

Nominees must certify that they have read and meet the requirements for Officers, available on our website and [HERE](#).

### **Nomination Must:**

- be made by a current full (, financial member and endorsed (signed) by the nominee.
- will be published in the final Newsletter before the AGM.
- be received by the Secretary by 5:00pm on Sunday, 21 December 2025 (30 working days before the AGM).
- may be received at the AGM, if no valid nomination was received by the due date. Normal consent and qualification conditions apply.

### **Final Notice of AGM**

A final Notice of the AGM will be issued no later than Sunday, 18 January 2026. This Final Notice will include, not least:

- Minutes of the previous meeting,
- Annual report(s) from the Committee,
- Financial Report,
- Nominees for Election of Officers
- Any remits, notice of motion or anything to be included as business, beyond that prescribed above, that the Secretary has received by Sunday 4<sup>th</sup> January 2026 (20 working days before the AGM)

## **Important Dates:**

Nominations for Committee Members	17:00, Saturday 21 <sup>st</sup> December 2025
Subject for Discussion/Remit	17:00, Sunday 4 <sup>th</sup> January 2026
Final Agenda for AGM	emailed by Sunday 18 <sup>th</sup> January 2026
Annual General Meeting	18:00, Saturday 31 <sup>st</sup> January 2026



# Coming Events - Details on our Website

Register online



## 2026 - National Rally/AGM, (South Island), Friday 30th January - Monday 2nd February 2026

Updated: 03/08/2025 BMWMC AGM Rally 2026 - Friday 30th January - Monday 2nd February 2026: Save the dates - more details and registration to follow nearer the event: Email any questions to [agmrally@bmwmc.nz](mailto:agmrally@bmwmc.nz)  
Accommodation - Please book directly: Harvest Hotel at the Gate Phone: 03 445 1777 Booking Code for Discount - #72266 AGM/National Rally:

[Find out more](#)

Harvest Hotel, Cromwell,  
6 Barry Avenue  
Cromwell, 9342 New Zealand  
[+ Google Map](#)



## Book your Accommodation and Ferry crossings Now

Bluebridge discount has been extended but Interislander discount excludes January & February



*New roads ahead!*



## THE BIKE MAINTENANCE SHOP IS RELOCATING!

We're trading city traffic for open roads and moving our services to **Te Kauwhata**.

Same trusted BMW expertise, now in a new setting.

*Why choose us?*

- ✓ **BMW SPECIALISTS**  
Over 30 years of hands-on experience with BMW motorbikes.
- ✓ **PRECISION SERVICE**  
Quality, efficiency, and attention to detail in every job.
- ✓ **AUTHORISED REPAIRS**  
Approved by all major insurance companies.



## Call 021 128 5546

or visit [thebmshop.nz](http://thebmshop.nz) to book your service

[contact@thebmshop.nz](mailto:contact@thebmshop.nz)  
 [www.thebmshop.nz](http://www.thebmshop.nz)

[thebikemaintenanceshop](https://www.facebook.com/thebikemaintenanceshop)  
 Te Kauwhata







LIKE YOU, ~~~  
ESCAPING THE  
ORDINARY IS  
~~~ IN OUR  
BLOOD



**We design insurance for those who live for the ride.**



Nothing comes close to the journey. All that matters is being connected to the road or trail, and the bike. Some people don't get it. We do. Two, three or four wheels... whatever your bike, with Star Motorcycle, we'll help you protect your means of escape.

ESCAPE THE  
ORDINARY



Call: 0800 250 600



Visit: [starinsure.co.nz](https://starinsure.co.nz)





**BMW Motorrad remains at the top.**

**With 202,563 motorcycles sold, BMW Motorrad confirms its leading position in the premium segment.**



**Munich.** BMW Motorrad posted another strong result in 2025: for the fourth consecutive year the company delivered more than 200,000 motorcycles to customers — a total of 202,563 units worldwide. This performance underscores the sustained appeal of our model range and the operational strength of BMW Motorrad.

Despite a challenging market environment — including a global decline in the over-500 cc segment, volatile conditions, intense price competition, regulatory constraints and new customs rules — BMW Motorrad achieved a solid sales result. Particularly encouraging: several markets recorded their best results ever, including Italy, Spain, Japan, Australia, Portugal, Canada, Malaysia and the Netherlands.

In December, a total of 15,109 motorcycles were sold — the third-best December in BMW Motorrad's history and an



impressive year-end driver.

“In a demanding market environment we played to our strengths and performed better than ever in many markets and segments. In key markets such as Germany we were even able to gain market share (+4.1 p.p. over 500 cc) and expand our market leadership. We owe this leading position to our commitment to technological leadership, a consistent strategic focus on brand strength and, not least, an attractive product offering. BMW Motorrad will continue to build on these success drivers, which is why I look to 2026 with great confidence.”

**Markus Flasch, CEO BMW Motorrad.**

### **Europe shows strength: BMW Motorrad with strong sales.**

A total of 118,814 motorcycles were sold in Europe, a slight increase versus the previous year. In addition to the record results already mentioned for Italy, Spain, Portugal and the Netherlands, the Central Europe region increased its volume to 12,248 units, another new high. Germany remains the strongest single market worldwide with 25,516 motorcycles sold, followed by France (19,019), Italy (16,692) and Spain (14,005).

### **USA, Brazil and China make important contributions to the overall result.**

Key markets outside Europe also demonstrated convincing sales strength in 2025 despite some significant restrictions. The USA (14,869), Brazil (14,488) and China (10,555) made substantial contributions to BMW Motorrad's overall result.

### **Product strength as the key to success.**

A decisive success factor was the appealing model range and the launch of important new models: the BMW R 1300 RT, BMW R 1300 R and BMW R 1300 RS were met with immediate customer enthusiasm. The BMW R 1300 GS Adventure introduced a year earlier also made a considerable contribution to sales. The new BMW R 12 G/S, with its legendary air/oil-cooled boxer engine, exceeded expectations already in its launch year.

Cont...



## **BMW R 1300 GS Adventure and R 1300 GS lead the way, with the successful BMW S 1000 RR close behind.**

The highest-volume models in the portfolio were once again the iconic boxer models BMW R 1300 GS Adventure (33,570 units) and BMW R 1300 GS (32,555), while the four-cylinder power segment was represented by the BMW S 1000 RR (11,643) in third place.

## **Strong performance in the middleweight and up to 500 cc segments.**

The middleweight class developed very positively and reached 41,166 sales, an increase on the previous year, supported by strong contributions from the BMW F 800 GS, BMW F 900 R and BMW F 900 GS. Models of the G family performed solidly in the sub-500 cc segment — despite the fact that the new BMW F 450 GS, already celebrated as a concept bike at its presentation, is due to be launched. The Urban Mobility segment also impressed: C 400 GT, C 400 X and the fully electric CE 04 and CE 02 together recorded more than 18,400 sales.

## **Sporty four-cylinders: powerful performance at a high level.**

The appeal of performance and riding dynamics also drove a marked sales increase for BMW Motorrad's sporty four-cylinder models. The S-series four-cylinder models accounted for 20,859 units; including the M models BMW M 1000 R, BMW M 1000 RR and BMW M 1000 XR, the four-cylinder segment totals 28,408 sold motorcycles.

## **Outlook for 2026.**

With a broad and successful product portfolio, BMW Motorrad enters 2026 with confidence. The objective is to further strengthen its leading position in the global premium motorcycle segment. Customers and fans can again look forward to numerous highlights, events and emotion-filled offers around motorcycling this year — including the market launch of the new BMW F 450 GS in spring and the BMW Motorrad International GS Trophy in autumn in Romania.

## **The BMW Group**





Must check the expiry date  
on my membership card with  
BMWMC  
Expiry date looms and don't  
membership@bmwmc.nz



AGM/National Rally 2026  
30th Jan - 2nd Feb 2026  
Register on the website soon  
www.bmwmc.nz



BWMC  
Remember to write a note  
about my travels and  
email it to  
editor@bmwmc.nz

Check the website for  
the latest details.



# Marketplace - FOR SALE

To advertise, please email  
newsletter@bmwmc.nz

Marketplace is a service for members of BMWMC, NZ.

Advertisements will be accepted from members, commercial traders and non-members when it is considered in our members' interest to do so. No charge is made for Marketplace advertising. The Editor and Executive reserve the right to reject or modify any advertisement considered inappropriate and take no responsibility for errors or omissions, the quality of items, claims made, or for any transactions that ensue.

Advertisements run for approx. 3 months from the date first published unless otherwise arranged with the Editor.

## Motorcycle/Car Number Plates for Sale:



**R13GS** is offered at \$1,170

Certificate and transfer sale only



**BMW 2U** - \$750 - 1 Plate as shown

**WE BMW** - \$750 - 2 Plates as shown



**Advertised on behalf of others.**  
If these are of interest, please  
contact Colin 027 9222 350 or  
editor@bmwmc.nz and we'll put  
you in touch.



# Marketplace - FOR SALE

To advertise, please email  
newsletter@bmwmc.nz

Registered: December 2018

Mileage: 82,418 km

WOF: Valid for 12 months

Condition: Very tidy –  
exceptionally well looked  
after

Service History: Full BMW  
service history

Extras Included:

Owner's manual

One used spare tyre

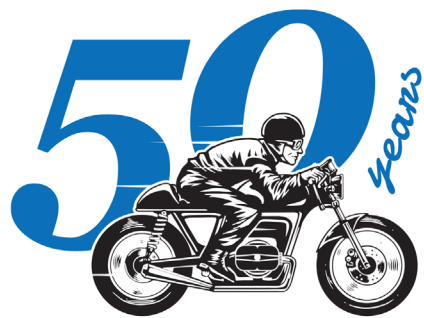
This is a fantastic adventure  
bike that runs beautifully  
and has been meticulously  
maintained throughout its  
life. If I hadn't bought a new  
one, I wouldn't be parting  
with it. Reliable, powerful,  
and well-equipped – this GS  
is ready to go.

Contact: Dean – 027 406 0160

Based in Huntly

\$16,500





# BMW Motorcycle Club

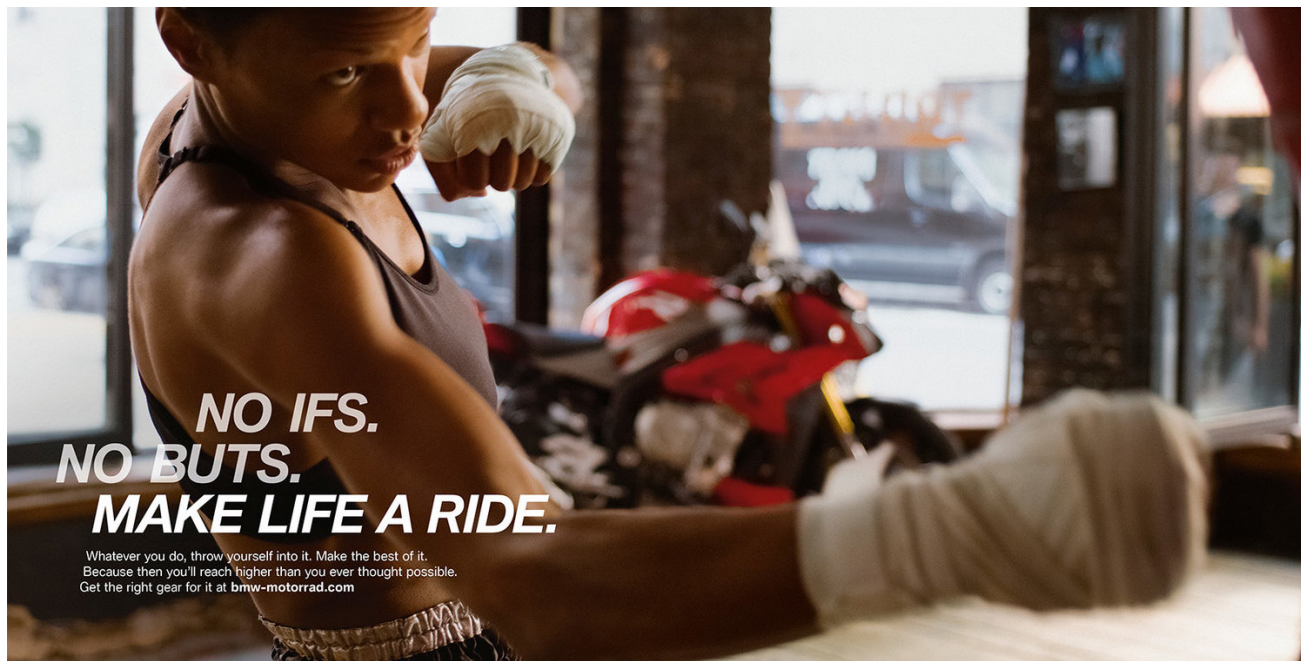
## New Zealand 1975 - 2025



BMW Motorcycle Club  
New Zealand



*Making Life a Ride!*



**NO IFS.  
NO BUTS.  
MAKE LIFE A RIDE.**

Whatever you do, throw yourself into it. Make the best of it.  
Because then you'll reach higher than you ever thought possible.  
Get the right gear for it at [bmw-motorrad.com](http://bmw-motorrad.com)

## IMPORTANT NOTICE

The BMW Motorcycle Club New Zealand is an organisation where members come together to enjoy rides to nominated destinations and participate in social occasions. The ride organiser nominates the destination and any regrouping points along the route, but has no control over how riders behave on the road. Club rides are not competitive events.

### Riding/Attendance Code:

#### 1. Personal Responsibility

All members riding on Club rides do so as individuals responsible for their own safety and must consider the safety of others on the ride.

#### 2. Motorcycle Condition

Members must ensure their motorcycles are safe and legal to ride, meeting at least Warrant of Fitness standards.

#### 3. Protective Gear

Riders, pillion, and sidecar passengers must wear at minimum:

- New Zealand Approved Motorcycle Helmet
- Sturdy footwear
- Gloves
- Clothing capable of offering protection in the event of an accident

#### 4. Assisting Others

Members are expected to assist anyone experiencing a mishap during a ride.

#### 5. Ride Organisation

Ride organisers will nominate the destination, regrouping points, and other stops. Organisers are not responsible for the behaviour or safety of other riders.

#### 6. Riding Pace

Riders must ride at a speed and in a manner comfortable to them. Do not exceed your personal comfort limits.

#### 7. Route Familiarity

Riders unfamiliar with the route should arrange to follow another rider who knows the way and rides at a comfortable pace.

#### 8. Group Riding Formation

Riders travelling as a group should adopt a staggered formation with a safe following distance:

- Dry conditions: approximately two seconds behind the rider in front
- Inclement conditions or loose surfaces: longer than two seconds

#### 9. Participation at Own Risk

Neither the Ride Organiser nor the Club is responsible for participants' safety. All participants travel on public or private roads at their own risk and must comply with all applicable Road Rules and Laws.

#### 10. Photography & Media Permission

By attending any Club ride or event, members consent to photographs, videos, or other media being taken of them by any person present. These images may be used in Club publications, social media, or promotional materials. The Club is not responsible for the use of any images taken by third parties.





## Area Representatives



### **NORTHLAND**

Ian Macartney  
027 281 0242  
northland@bmwmc.nz

### **AUCKLAND**

Stephen Parkinson  
021 989 092  
auckland@bmwmc.nz

### **WAIKATO**

Chris Townson  
027 390 4239  
waikato@bmwmc.nz

### **BAY OF PLENTY**

Alan Belworthy  
027 496 0748  
bayofplenty@bmwmc.nz

### **TARANAKI**

Phil D'Ath  
027 278 6770  
taranaki@bmwmc.nz

### **RANGITIKEI**

Murray Petherick  
027 433 6657  
rangitikei@bmwmc.nz

### **EAST COAST**

Alan Robinson  
027 432 4503  
eastcoast@bmwmc.nz

### **WELLINGTON/WAIRARAPA**

Denis Hulston  
027 443 3604  
wellington@bmwmc.nz

### **TOP OF THE SOUTH**

Anja Claus  
027 711 1113  
topofthesouth@bmwmc.nz

### **CANTERBURY**

Jason Batchelor  
027 429 5905  
canterbury@bmwmc.nz

### **SOUTHERN**

Tharon Knoetze  
021 034 1760  
southern@bmwmc.nz