



*Wishing You a
Merry Christmas and a
Happy New Year!*



BMW Clubs
International Council



BMW Motorcycle Club
New Zealand



EDITORIAL COPY TO:

Colin Gates
newsletter@bmwmc.nz

OTHER CORRESPONDENCE TO

The Secretary
BMWMCNZ
PO Box 109-245
Newmarket
Auckland 1149
New Zealand

PRESIDENT

Chris Souness
021 494 952
president@bmwmc.nz

VICE PRESIDENT

Stephen Parkinson
021 989 092
vicepresident@bmwmc.nz

SECRETARY

David Fish
021 927 901
secretary@bmwmc.nz

TREASURER

Colin Gates
027 9222 350
treasurer@bmwmc.nz

MEMBERSHIP SECRETARY

Dave Oldershaw
029 200 3679
membership@bmwmc.nz

AREA REP LIAISON

Ian Macartney
027 281 0242
arl@bmwmc.nz

BMWMC GEAR

shop@bmwmc.nz

PRIVACY OFFICER

privacy@bmwmc.nz

**THANK YOU for your
feedback and stories**
feedback@bmwmc.nz

Contents

- 3 New Members, last month (below)
- 4 President's Podium
- 6 Area Reports Start
- 23 AGM 2026 Details and Notice
- 32 Events
- 39 Market Place
- 43 Area Representatives v

Welcome to our New Members

We hope you'll take part in many of your local and national events. Your Area Rep will be pleased to introduce you to other members in your area. Our monthly newsletter is an open forum for all members. If you fancy a story and/or photos published about your ride, the rebuild of your bike, a book you might have read or a movie you have seen lately, or just want to get something off your chest about how the club is going, then please email/ phone the Editor no later than the 2nd day of the month.

We forward to your contributions.

Please Note: Any material intended for publication in the newsletter should reach the Editor no later than the 2nd day of any month but the earlier the better. The Newsletter is an open forum for all members. Views expressed by members may not necessarily represent the views of BMWMC. Publication of all material is subject to the Editor's discretion. Photos are courtesy of article authors and/or usually credited when known, unless requested otherwise.

Cover picture: Father Christmas riding a GS

Photo by: Illustration by AI

Date: December 2025



BMW Clubs
International Council



BMW Motorcycle Club
New Zealand



A Very Warm Welcome to:

BARRETT

BUGDEN

DUA

FARAC

FORD

HENLEY

HOARE

MUNLEY

POOL

ROBSON

ROBSON

ROOD

SELLERS

TIPOKI

WIFFIN

Tony

Lionel

Rajeev

Peter

Haydn

Simon

Pat

Mike

Chris

Pete

Patricia

Robert Kelwyn

Patricia

David

Ian

MOTUEKA

OAMARU

AUCKLAND

AUCKLAND

NEW PLYMOUTH

TAUMARUNUI

MOUNT MAUNGANUI

AUCKLAND

WHANGAREI

TARADALE

TARADALE

RUAKAKA

TARADALE

WAIROA

BLLENHEIM



President's Podium

Chris Souness



BMW Motorcycle Club
New Zealand



December 2025

H i,

Well, who would have thought Christmas is just around the corner? Is it just me, or do the years fly by faster as we get older?

I've noticed our team of Area Reps has done a fantastic job bringing people together and spreading a bit of Christmas cheer. Years ago, the club decided to support these events with a small contribution to help offset costs, and I hope that's been a benefit to everyone who attended.

I know I've said this before, and I'll keep saying it: we really appreciate the hard work and dedication shown by our Area Reps across the country. It's not always easy arranging monthly rides and encouraging members to join in, so please help where you can. Maybe suggest some ride ideas, or even offer to lead one yourself!

On the Area Rep front, there have been a couple of changes. Gretchen Holland (Top of the South) and Peter Tibbs (Wairarapa) have both decided to step down. They've been long-standing members and have done a wonderful job in their roles. I want to personally thank them for their efforts. I'm sure we'll still see them at club events, so please be sure to thank them too if you get the chance.

In the Top of the South, Anja Claus has stepped up to take on the role, she'll do a fantastic job. For now, we're not replacing Tibsy in Wairarapa. Denis Hulston (Wellington AR) will support that area, and I'm sure there'll also be plenty of opportunities to schedule rides alongside Murray Petherick and the gang from Rangitikei.





Looking ahead, the next big event is our National Rally and AGM, happening at the end of January in Cromwell, Central Otago. Barry Richardson and Martin McCarron are working hard behind the scenes to make it a cracker of an event. You've probably seen their updates in the newsletters, so you know it's going to be a great time, awesome riding, stunning scenery, and of course, the AGM. All the details for timing and registration are in the newsletter, so if you haven't signed up yet, get onto it, spaces are filling fast!

That's enough from me. If you're travelling over the Christmas and New Year period, whether on two wheels or four, stay safe and have a fantastic time.

All the best.

Chris





Ian Canty Memorial Ride



All the back roads to Whakamaru Cafe.

The Ian Canty Memorial ride on Saturday, the 29th of November, started off at 8.15 am at the Mobil petrol station in Matamata. Where I, Gavin (Ian's brother), and three other motorcyclists, plus one car with Frances and Tania (Ian's mum and sister), met up with another rider in Arapuni.

From there, we all travelled the back roads to Wharepapa and then went through to the Te Kawa crossroads, and onwards to Waitomo. From there, we travelled to Te Kuiti BP for a

coffee stop. After having had a break, 2 motorcycle riders departed from the group and headed home.

We left Te Kuiti and headed towards Rangitoto Road and from there onto Barbers Road and through to Toes Bridge. Where Ian and I used to stop quite frequently on our many motorcycle rides. Whenever we stopped there, we would joke about never seeing a single car cross the bridge, and today, five cars crossed it whilst we were there.

Then we all headed to the



Pae Whenua area, where we turned onto Wharepuhunga Road and then through to Whakamaru for lunch at the Dam café, which was Ian's café of choice whenever we were out for a ride together.

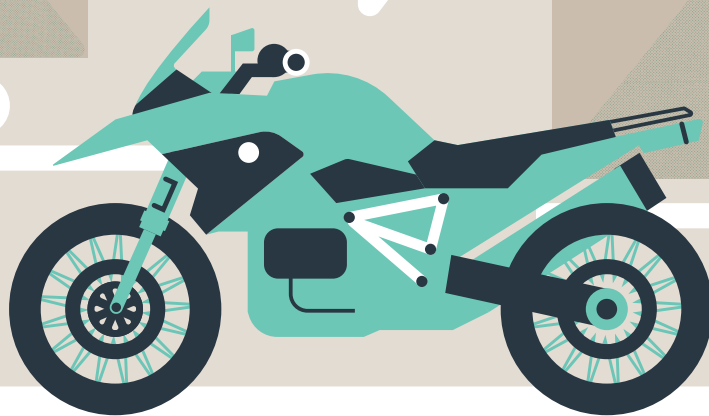
There, two additional club members, along with another motorcyclist friend

of Ian's, joined us for lunch.

After lunch, Ian's Mum, Frances, presented us all with a box of chocolates, and I was awarded the Ian Canty Memorial trophy for having the best story told on the day.

Trevor #2329

I'll SHOW
YOU PARTS OF
THE WORLD
OTHERS FEAR



Just like a BMW R1200, every motorcycle has a unique character. Which is why we design insurance that's anything but off-the-shelf. If you have a bike that helps you escape the ordinary, talk to us about customised insurance you won't find anywhere else.

Star Insure Morotcycle. It's the insurance your bike would choose.

ESCAPE THE
ORDINARY



0800 250 600



starinsure.co.nz

starinsure
Motorcycle

Rangitikei Roundup

Murray Petherick - rangitikei@bmwmc.nz



Mini bikes heading for the track

Rider Training: California Superbike School.

Through the 10th, 11th and 12th of November, five members of our group once again assisted with the running of the training school, held at the Manfeild race track in Feilding. Don was involved in the race control team, and Barry, Neville, Peer, and I served as track flag marshals.

The purpose of the School is to teach and improve rider skills and bike handling techniques with the benefit of a closed track situation. Riders use their own bikes, and these range from actual race bikes to road touring bikes, with the riders graded in accordance with the number of

schools they have attended. Last year, one participant showed up on an R1250GS! The training is split into track and classroom sessions for the respective rider grades and is managed by skilled rider-coaches who work with the riders both on the track and in the classroom. Track time is not simply an opportunity to see how fast you can go but depending on the particular group and the stage they are at, the track session protocols can progress through a range, such as "two gears, no brakes" to "three gears, light brakes" and finally to "all gears, full brakes". Through the course of the School, it is interesting to see the progress and improvements many of the riders are able to achieve.



This year, the first day of the School included some tuition and track time for three young riders, together with their on-track coach, all on 'mini GP' bikes. The 'mini' bikes are generally around 160cc with a manual clutch and 4 gears. These three pre-teen lads, one of whom is Marc, Don's 10-year-old grandson, are a product of the local 'Mini GP Academy', members of which are able to participate in a '5 meeting' series, raced on go-kart tracks, in a number of centres including Tokoroa, Hastings, New Plymouth and Palmerston North. Prior to joining the Academy, youngsters in the Manawatu area are able to learn to ride at a 'Have a Go' school, based at Manfeild, where they learn to ride on a track marked out in the carpark using 110cc, centrifugal clutch bikes. One of the big benefits of this particular 'Have a Go' school is that the bikes and riding gear are supplied by the school organiser who is, coincidentally, Marc's Dad!

Incidentally, during the course of the day at the School, Marc was able to improve his lap time, on the Manfeild Chris Amon circuit, by an impressive 7 seconds, to achieve a lap time of 1 min 40 secs, and was reaching speeds of 125km/hr; that's impressive for a 10 year old on a mini bike!

While many young riders

'cut their teeth' on dirt bikes this 'Have a Go' school and Mini GP Academy combination gives riders an opportunity to develop sealed surface riding skills at an early age and provides them with a great introduction to track racing.

November Monthly Ride.

Finally, we got some settled weather, and the ride took place on Sunday, the 16th. Like the Wellington group had done the previous day, we headed for a lunch stop at Pongaroa.

The meeting place was the Backyard Café in Ashhurst and a group of seven riders assembled there, including recently joined member Karla and partner, Grant. Karla and Grant both ride 'F' series GS bikes and after the cruise over the new expressway to Woodville, we were able to introduce them to their first trip through the Makuri gorge. A minor incident when, at a stop at the hilltop parking area beyond the Makuri village, my bike



Lunch stop at the Pongaroa tavern

rolled forward off the side stand on what I thought was reasonably level ground. Note to self: check ground slopes more carefully in future! However, no damage to either bike or rider so after a brief leg-stretch we headed on to Pongaroa.

It turned out that Pongaroa was a popular venue for bikers that day and we encountered a couple of other groups while lunching at the tavern. After lunch, we headed back via Weber and



Dannevirke (yours truly managed to miss the bypass turn heading into Dannevirke!) and after a ride through the town, we headed to Woodville for a re-group and leg stretch. From Woodville, Neville and Peer decided to head over the old Saddle Road in search of a few more twisties, en-route to home in Whanganui, while the rest of the group headed home to Levin via the expressway.

We encountered a few minor roadworks along the way but otherwise a good day out with pleasant riding weather, some interesting roads and good company.

Monthly Brunch Gathering.



The gathering was held at our usual venue, the Woolshed Café, Sanson, on Sunday, 23rd. A smallish group of 11 turned out but we missed our Whanganui contingent, who were obviously otherwise engaged. Amongst the general chat, the “boys’ group” (which included a couple of past and present teachers) tried to sort out the secondary education system but I doubt any of the wise comments will find their way back to Wellington. We can but try!

Murray #2690

Wellington & Wairarapa Wanderings

Denis Hulston - wellington@bmwmc.nz



Club Social Meet & Eat at the Petone Club - 3rd November

There was a good turnout of riders and non-riders to welcome in November, with good food and lots to talk about.

Our thanks to Martyn for covering while Annie and I were in Europe. We had three weeks of riding with only one day of rain. We were watching forecasts for storms in Wellington while we were away, including a warning for people to work from home. That seemed exceptional for Wellington. We

hope we've brought good weather back with us.

My riding has been restricted by eye surgeries this month, but we have managed to plan some rides around that which don't compromise healing.

Wellington Rides - Saturday 15th November

The forecast for our first November ride had been good earlier in the week, but deteriorated so that Saturday was likely to be showers and wind. However, ever optimistic, five of us met at Remutaka with plans to ride to Pongaroa for lunch, about a 2 ½ hour 150km ride.

Martyn's rear brakes were not sounding good, so he returned from our rendezvous for servicing. Four of us, Ian M, Stephen O, Alistair K and Denis H set off on the route over the Remutaka hill. Only a few minutes into the ride, and we ran into hail and rain. Inevitably, we hadn't put our wets on, so we were well wet by the time we got south of Featherston and stopped to gear

up.

We continued our ride to Masterton for a coffee stop and warm up, where we decided to shorten our ride. Rather than continue to Pongaroa, we rode back routes through Homebush, Te Whiti road to Gladstone and on to Martinborough. Another coffee and three of us rode across Lake Wairarapa on the East/West road and back to Featherston on the western side of the lake before the return ride over the Remutaka Hill. There was very little traffic, and no more rain. A pleasant 240km day ride.

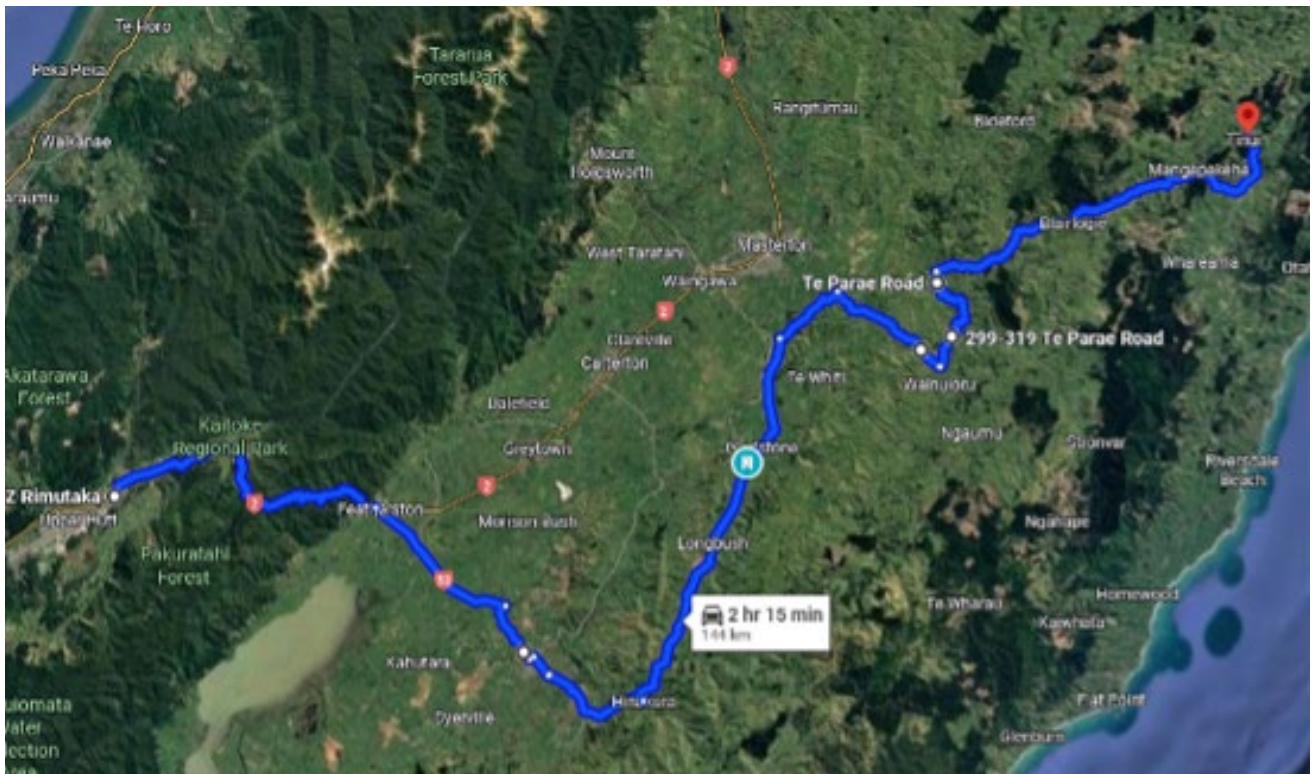


Wellington Rides - Saturday 15th November

We had scheduled a Rangitikei ride to Marton, Mount Curl, Hunterville and the Turakina valley, but we deferred the planned ride for an opportunity to ride in the Wairarapa with IAM riders and to meet up with any Wairarapa riders. Stu Lowe had planned a route through Martinborough, Longbush, Gladstone and Wainuioru to Tinui

for a lunch stop.

Eleven riders met at Z Remutaka for the ride over the Remutaka. Traffic was heavy, so the ride was restrained. We stopped for fuel and coffee at Martinborough before continuing on the back route, where there was very little traffic.



Sealed road route to Tinui

The ride up Te Wharau Road and Westmere Road to Wainuioru was leisurely and practically clear of all

traffic. We continued a relaxed ride to Tinui, with only a couple of sections of the road being resealed and gravelled.



Tinui Café and Bar – our lunch stop

Cont...

It was good food and chat at Tinui (fresh fish and chips that rivalled the famous Lake Ferry menu). Dave H joined us, having ridden over the Pahiatua Track, through some very strong wind gusts, from Foxton. Welcome back to riding, Dave.

It was also great to meet Richard M who has returned to riding inspired by the GS Rally in Whanganui.

Three riders, Richard, Chris and Colin rode gravel on the Pack Spur road loop, which



was dry without any gnarly sections. Richard said there was some sand drift on the coastal stretch south of Mataikona – “report card sand riding –

room for improvement”. They continued through Ngaumu Forest – Rewa Bush back to Wainuioru.

Alec rode Tinui Road to Alfredton. Several riders chose the direct route home via Masterton. Four riders, Denis, Glenn, Philip and Ian retraced the bitumen route back through Wainuioru to Martinborough via Ponatahi before returning over the Remutaka Hill. Traffic was heavy and slow on the hill, with strong wind gusts.

This was a great day of various riding, about 345km.

Thanks, Stu, for organising. It was great to catch up with old friends and returning riders, and to ride together with the IAM riders

Denis #3131

Wairarapa / Wellington Rides

From November, we are excited to merge the Wellington and Wairarapa regions in our rides and emails. This came about as Tibsy sold his dream machine and is not currently riding.

You're a legend Tibsy! We've shared some great rides together. We look forward to catching up over coffee stops on some of our rides and we'll keep you in the loop.

Thanks and go well -
Denis and all.



Top of the South Beemers/Te Tauihu

Gretchen Holland - topofthesouth@bmwmc.nz



Elaine Bay/French Pass v2 - Sunday 16th November



Because thirteen TOTS members attended the RAG rally in Kaikoura last weekend our monthly ride was moved to the third Sunday of the month, and because last month's ride was so wet and only got as far as Rai Valley, it was decided to run it again. And what a cracker day it was!



We welcomed Rodney and Carl on their first ride with us. Some riders only came as far as Rai Valley, most only went as far as Elaine Bay and Peter, Greg and Claire joined a random bloke on a TransAlp who stopped off at our picnic spot and had a natter, and they all rode on to French Pass together. Only Odette and I braved the slippery jetty and the odd jellyfish



for a swim. I missed the conversation about stopping at Rai for our usual ice cream on the way home, so I missed the ice cream too!

Gretchen #949

Riders were: Dale and Odette, Trevor, John, Peter, Gretchen, Carl, Rodney, Revti, William, Hilary, Richard, Greg and Claire, Ross

FREEPHONE 0800 272 23 42

564 Ferry Road, Woolston, www.arcdiamotel.co.nz

Geoff Lester 027 285 1293

Top of the South Beemers/Te Tauihu

Gretchen Holland - topofthesouth@bmwmc.nz



Trialling a new idea – now that daylight saving is here, I thought we might try having a monthly evening ride to a local picnic spot to have tea. Future rides might all be north as the traffic congestion to head south at that time of the afternoon/evening is not pleasant! A lot of members were overnighing in Blenheim on the way to the Kaikoura rally but we had a nice wee band of six perched on the large driftwood logs and rocks, watching and listening to the sea while eating our assorted food. Andy got stopped on the way by the constabulary, who were very surprised to see that Andy and Victoria were a ‘mature’ rider and pillion – he’d been fooled (for some reason) by Victoria’s long blonde hair flowing behind her helmet.

Gretchen #949

Picnickers were:

Peter, Gretchen, Tony, Anja, Andy and Victoria



BMW MOTORRAD



BOXER BRILLIANCE

MAKE LIFE A RIDE

Colour options shown and models are subject to availability; options and colours may differ from images (Please contact your BMW Motorrad dealer). All prices, availability and specifications are subject to change without notice by BMW Motorrad New Zealand. Valid while stocks last.



R 12 G/S
FROM \$30,390 + ORC



R 1300 RT
FROM \$43,990 + ORC



R 1300 RS
FROM \$33,490 + ORC



R 1300 R
FROM \$32,490 + ORC



R 1300 GS
FROM \$35,990 + ORC



R 1300 GSA
FROM \$39,990 + ORC

Authorised BMW Motorrad Dealers

CMG Motorcycles Christchurch
122 Saint Asaph Street,
Sockburn
(03) 353-6383
ride@cmgmotorcycles.co.nz
cmgmotorcycles.co.nz

Continental Motorrad Auckland
45-65 Wairau Road, Wairau Valley,
North Shore
021 406 326
salesaki@cmbmw.co.nz
continentalmotorrad.co.nz

Continental Motorrad Wellington
138 Hutt Road
Kaiwharawhara
(04) 499 9030
saleswlg@cmbmw.co.nz
continentalmotorrad.co.nz

Experience Motorcycles Auckland
625 New North Road
Kingsland
(09) 845-5950
sales@experiencemotorcycles.co.nz
experiencemotorcycles.co.nz

McIver & Veitch Dunedin
112 Crawford Street
(03) 477-0236
sales@mciverandveitch.co.nz
mciverandveitch.co.nz

Mount Motorcycles Tauranga
23 Totara Street
Mount Maunganui
(07) 575-4190
sales@mountmotorcycles.co.nz
mountmotorcycles.co.nz

Road and Sport Motorcycles Hamilton
381 Te Rapa Road, Te Rapa
(07) 958 1400
sales@roadandsport.co.nz
www.roadandsport.co.nz

Top of the South - SIRAG

Anja Claus - topofthesouth@bmwmc.nz



On Sunday, we were offered a ride to Puhi Peaks Station. 17 riders and one pillion took this offer. How lucky we were to get this opportunity. Motorbikes are not often allowed to go on the 1,618-hectare station.

The ride up to the station was a bit more challenging than portrayed. This was due to one bridge being washed out and not replaced yet, and fresh gravel on the entry road. Much needed, according to the managers of the station, but it made it interesting in places for us. The scenery was stunning, and we all made it to the meeting point. (With a bit of help from friends.) We were made very welcome by Tim and Fiona with tea, coffee and some fresh baking courtesy of Fiona. This was a fundraiser for their biosecurity fund.

It is obvious that they are devoted to this place. The flora and fauna are diverse and quite unique. Half of the station is set aside as the Puhi Peaks Nature Reserve.

This is one of only three places where the Hutton's shearwater nests. An endangered seabird endemic to the Kaikoura region. Twice a year, a helicopter flies out to the tops to drop people off to set a trap line to deter pests, to give these birds a fair chance.

There are several huts on the property that are available for hire. Hunting, tramping, or just taking in the beauty of this place are enough reasons to do so.

Tim and Fiona offered us to have a little ride on the station to one of the huts. After a safety briefing and some info on the track, the group carried on. Four of

us greatly accepted the offer of a ride in the buggy or the support car. Some more stunning scenery and background information. After a little break and



photos, we returned to the first meeting point for more tea, coffee and baking.



After saying our goodbyes, we made our own way out of the station to our destinations.

A great thank you to Tim and Fiona for making us so welcome in their piece of paradise. Also, a big thank you to Jason for organising the SIRAG, to Geoff for leading us up this beautiful place, Grant for being Tail End Charlie and everybody who made this day unforgettable.

Anja #3706





HARVEST HOTEL & EVENTS VENUE

Cromwell, Central Otago

2026 Annual Rally and AGM - Central Otago

We are returning once again to Cromwell, in the heart of Central Otago, commencing Friday afternoon, January 30th, and concluding Monday morning, February 2nd.

Book now - Our venue, The Gate, has been booked exclusively for our event, subject to bookings made by the end of December.

It's a terrific location that's recently been refurbished, along with much of the Cromwell town centre just across the road. Be as busy or as relaxed as you like in this fantastic setting!

Accommodation

The Gate is an upmarket motor lodge with very comfortable, quiet rooms, all offering great views of the surrounding mountains and vineyards. There is plenty of safe parking for our bikes. The lodge is close to Lake Dunstan with excellent walks in every direction for those with sore bottoms from riding!

Dining & Local Attractions

The on-site café, Forage, is open from early morning until late in the day,

catering for all tastes and budgets.

Want to stretch your legs? Simply cross the road to explore Cromwell's cafés, bars, and eateries, or visit The Wooing Tree for wine tasting and dining.

Rides & Activities

Throughout the Rally weekend, there will be organised road and adventure rides. You'll find ride options and route lists at check-in. Prefer to explore on your own? The choices are endless — from Highlands Park to historic townships, Central Otago iconic cafés, and even a chance to visit Paradise!

Please, contact The Harvest Hotel directly to book your room.

Our Room Rate: \$260/room/ night

Booking code: BMWMC AGM Rally

Phone: 03 445 1777

There are several room configurations, so you can choose to room-share. Please let Reception know when booking.

BMW RALLY - Cromwell 2026

Thank you to Star Insurance, our sponsors.

Welcome to the 2026 BMWMC Rally & AGM brief.

Don't leave your decision to book your room any longer! The end of the year is not far away!

The venue is "The Gate" which is booked out to us for that period. It is a terrific venue which just been refurbished and developed, as has much of the Cromwell town centre across the road, and you will be able to be as busy or as lazy as you like in this fantastic location. The Gate is

an upmarket motor lodge with very comfortable, quiet rooms, all with great views of the surrounding mountains and vineyards, and of course there is plenty of safe parking for our BMWs. It is also very close to Lake Dunstan and there are great walks in all directions for those whose bottoms are sore from lots of riding!

The Gate has its own cafe, "Forage", which is open from early morning



until late in the day, and which caters for all tastes and wallets. If you want to stretch your legs a bit, cross the road and check out the cafés, bars and eateries of Cromwell. And don't forget "The Wooing Tree" vineyard and restaurant across the road for wine tasting and eating.

Over the Rally weekend there will be organised road rides and adventure rides—we will have lists of rides, both road and adventure, for you to choose from when you check in at The Gate. Of course, if you want to do your own thing, the choices are huge, from Highlands Park to the many cafés and historical townships and sites that abound in Central Otago. You will even be able to visit Paradise!

Please contact The Gate yourself for your room bookings. All rooms are the same price @ \$260.00 per room/ per night. There are several room configurations available so you will be able to room share. This means that the cost per person can be significantly reduced. Just make your wishes clear to Reception when you book.

Contact : Harvest Hotel at the Gate

Items earmarked from BMW Motorrad NZ - thank you!

Description	Value \$	Qty
Boots Sonora GTX	579.00	1
Jacket Bavella	1,176.00	1
Pants Gerlos	818.00	1
Glove Tenda 2in1 GTX	388.00	1
Helmet Street X	804.00	1
Caps Boxer	58.00	2
Caps Motorrad	58.00	2
Raffle/Prizes TBC - *Subject to change.		



Phone: 03 445 1777 Booking Code BMW Rally for the discount.

Accommodation at the Gate is filling up fast. There are only a few rooms remaining please,
DON'T LEAVE IT TOO LATE!

However, if you miss the remaining rooms, there are other accommodation facilities available, including five motels within 300 metres of The Gate.

They are as follows:

Lake Dunstan Motel, Carrick Lodge Motel, Colonial Manor Motel, Asure Central Gold Motel, and Cromwell Getaway.

In addition, there are other motels etc., a little further away.

Want to make your motorcycling holiday even better and even more memorable? And it's just down the road in Invercargill. The Burt Munro Rally begins on Wednesday, 4 February and finishes on Sunday, 8 February. What a great opportunity to join in and experience the biggest and best motorcycle gathering in Aotearoa!

Road rides



- R1. GLENORCHY LOOP** - Cromwell, Queenstown, Glenorchy LUNCH 112 km, Arrowtown, Crown range Wanaka 121 km, Cromwell 53km Total 290km 31/2 hours non-stop but 6 hours with stops, lunch and pics, stunning ride to the back of Milford Sound plus beautiful Arrowtown then New Zealand's Highest pass to Stunning Wanaka waterfront and home.
- R2. HAAST RETURN** Cromwell to Lake Hāwea to Haast LUNCH 190 km, to Wānaka waterfront to Cromwell 194 km total 385 km. From the lakes of central Otago over mountains, beech forests to the ocean lunch at the Stags Head Haast then home via Wanaka waterfront, a lot of twists both ways and worth a return ride.
- R3. Macraes Loop**, Cromwell to Ophir to Hyde to Macraes, 165 km Lunch. To Ranfurly to Saint Bathans 125 km (approximately 15 km very good gravel) to Cromwell 86km, total 380 km. Travel the gold mining routes through central Otago, beautiful, easy, big sweeping roads, old and new gold mines, and little towns. Stunning and easy day in the sun.
- R4. Big Dunedin loop** (Pig Route) Cromwell - Roxburgh - Dunedin 224 km Lunch to Palmerston Ranfurly (pig Route, I'm jealous) Cromwell 239 km total 465 km This is a stunning day ride other than SH1, very few straights, magnificent views and the big endless corners of the pig route and great little towns and the huge Maniototo sky.
- R5. Gore Kingston Flyer Loop** Cromwell to Gore Via Tapanui 170 km Lunch to Lumsden to Kingston (you might meet the Kingston Flyer) to Frankton to Cromwell 213 km total 390 km. This is just a beautiful ride, no hard bits, no really long straights, very picturesque, great corners. And pictures or a ride with the Flyer 🤙
- R6. Lindis** - Pig Route Loop Cromwell to Omarama to Oamaru 230 km lunch to Palmerston to Cromwell via pig route 240 km total 470 km Mountains twists lakes twists, SH1 to pig route and those huge sweeps and curves, jealous again.



Gravel rides:

- G1. Gravel Skippers Canyon School Reserve.** Travelling through the Kawarau gorge to Arrowtown, then heading towards Coronet Peak, you travel for approximately 45 km on Tar-seal, then the excitement starts. Turning left onto the very narrow Skippers Canyon Road and you travel on a mostly firm surface to Skippers School reserve for lunch and pictures 25 k in and 25 k out 😊. I would not call this a very technical ride, but it's narrow, and if you go off the riverside of the road, you won't be coming home. Toyota Corollas do this road and buses, and GSA1250s 2 up. If you're thinking about this, check out YouTube. Total 200k, allow 4 hours plus time in Arrowtown on the way home to Cromwell.
- G2. Nevis** is gravel and technical, and lots of water. This is a 70 km ride of about 50 km 4WD track, it includes numerous river crossings and requires a high level of caution and no cell phone coverage - do not do it on your own. We should have 2 or 3 members who could lead this ride, hopefully. You pop out at Garston, where you can have a coffee at the coffee bomb, then either go back the way you came 🧑 or Tar seal back through Queenstown to Cromwell 100km Total 180 km 5 - 6 hours? Once again, plenty to check out on YouTube.
- G3. Thompson Track,** Cromwell to Tarras 22km over Thompson gorge Rd to Omakau 30'ish km of Gravel, a bit of water and lots of gates and back to Cromwell 52 km. Total 110 km 4 hours? Check YouTube.
- G4. Raspberry Creek,** Mt Aspiring. One of my favourite little rides, Cromwell to Wanaka, then to the base of Treble Cone, 76 km of Tar seal, then about 40 km of interesting gravel and some nice little fords up to Raspberry Creek. This is a stunning country, the lunch with the sandflies, maybe a little walk, then the ride home. Total 240 km, 5 - 6 hours.

Short rides:

- S1. Saint Bathans** and the ghost, Chatto Creek pub, home of the Chatto Creek motorcycle club, these guys ride every Thursday 52 weeks of the year, averaging 25 riders every time, the Hamlet of Cambrians ~ never been to a hamlet, this is your chance, it's stunning.
- S2. Cardrona** and another Ghost at the pub (just sold for 20+ million?). They need your custom. Arrowtown or Queenstown. What about Lake Hawea and visit the pub for the last time, being demo for 24 sections, 2 million each ~ just petty cash really 😊.
- S3. Roxburgh,** see Barry at his favourite cafe. If you like pies, hunt down a Sangas pie, and you will never go to Fairlie again. All in all, in Central, we are so lucky to have so many rides. If anyone wants an 800 - 1100 km plus day ride, see me, I will be very jealous but can put you on an alpine loop, or something else...? 😊

BMW RALLY 2026

Planned schedule

FRIDAY

- 1.00pm Registrations open at The Gate in the Conference Centre
- 1.00-6.00pm Settle in & relax. Drinks from the bar can be charged to your room.
- 6.00-8.30pm Tapas and other light food. Sponsored by STAR Insurance.

SATURDAY

- 6.00am onwards **SATURDAY**
Breakfast - A Smorgasboard. Eat as much as you like!
Bottomless coffee and tea.
- 8.00-9.00am Bikes assembled by 8.00am for Concours d'Elegance judging.
- 9.00am - For All **Group Photo. Please be there on time. Dress optional!**
- 9.30am Gravel riders depart
- 10.00am-4.00pm Road rides leave when ready. With lunch stops.
- 6.00pm AGM in Conference Centre
- 7.30pm Rally dinner

SUNDAY

- 6.00am onwards Breakfast. Smorgasboard.
- 8.00am Bikes assembled for Gymkhana
- 9.30am GS riders depart
- 10.30am Road riders depart
- 6.00-8.30pm Burgerfest; prize-giving; raffle draws

MONDAY

- 6.00am onwards Breakfast. Smorgasboard.
- 10.00am It's all over ! Haere ra and safe travelling

BMW MOTORCYCLE OF NEW ZEALAND

NOMINATION FOR ELECTION TO OFFICE - AGM 2026

17:00, Saturday 21st December 2025

email nominations to: secretary@bmwmc.nz



BMW Motorcycle Club
New Zealand



1. Details of the Member Making the Nomination

Name: Membership #

Address:
.....

Signature Date:

2. Details of Persons Nominated

Name: Membership #

Address:
.....

I nominate the above Nominee for the Committee Position of:

3. Nominee Acceptance

I acknowledge and accept the nomination shown above. I have read the Qualification for Officers document and certify that I am not disqualified under any clause therein.

Signature Date:

4. Constitutional Requirement

Each year, the members of the Club eligible to vote shall, by ballot, elect the President, the Vice-President, the Secretary, the Treasurer, the Membership Secretary and the Members' Representative. Nominations shall be made by way of a written nomination signed by a current full, financial member and endorsed with the consent of the nominee. Nominations must be received by the secretary to enable publication in the last newsletter distributed before the day fixed for the Annual General Meeting. Should there be insufficient candidates for a position, nominations may be received at the annual general meeting, provided that no member can be elected who has not consented to be nominated.

**Committee roles are for a 2-year term; election is for those roles that have expired, as per the AGM notification.*

5. Nomination Delivery

All nominations must be emailed to the Secretary. A confirmation of receipt will be emailed in reply. If no confirmation is received, members are asked to check their spam folder and then text or email again to ensure the nomination has been properly received and recorded.

Please scan/photograph the completed form and email it to: secretary@bmwmc.nz

Nomination forms **MUST** be received by **Sunday, 21st December 2025**, so that all candidate details can be sent out to all members with the formal notification of the Annual General Meeting. Nomination from the floor will only be accepted if there are no acceptable nominations submitted by the closing date.



Notice of Annual General Meeting

**BMW Motorcycle Club New Zealand Incorporated. (BMWMC)
Annual General Meeting 2026
Saturday 31st January 2026 at 6:00pm,
Harvest Hotel, 6 Barry Avenue, Cromwell, South Island.**

Notice of Motions and Agenda Preparation

Any member of BMWMC intending to bring forward a subject for discussion, or to move a resolution at the AGM, must give written notice to the Secretary no later than 5:00pm on Sunday, 4 January 2026.

The Secretary will accept notices as a document attached to an email sent to: secretary@bmwmc.nz

Notices must:

- Clearly state the subject for discussion or set out the full wording of the resolution to be moved.
- Be dated and signed by both the mover and seconder.
- Be submitted by two current financial, full members of BMWMC.

Any subject or resolution submitted after 4 January 2026 will not be accepted.

The final AGM agenda, together with any notices of motion received, will be emailed to all members at their last known address and published on our website (www.bmwmc.nz) no later than 10 working days before the AGM.

Positions for Election

The positions of Vice President, Treasurer, Area Rep Liaison, and Membership Secretary were re-elected for a two-year term at the 2025 AGM.

The following positions are open for election at the upcoming AGM:

- **President** – incumbent Chris Souness, not standing for re-election
- **Secretary** – incumbent David Fish, not standing for re-election

The Committee acknowledges and thanks Chris and David for their contribution and service to the Club and the Committee.

These roles are open to any current member who wishes to be nominated. The Committee encourages members who would like to contribute to the Club's governance to submit a nomination for one of the available positions. In accordance with the Constitution, each elected role carries a two-year term. Nomination Forms are available by email, website or clicking [HERE](#). Nominees must certify that they have read and meet the requirements for Officers, available on our website and [HERE](#).

Nomination Must:

- be made by a current full (, financial member and endorsed (signed) by the nominee.
- will be published in the final Newsletter before the AGM.
- be received by the Secretary by 5:00pm on Sunday, 21 December 2025 (30 working days before the AGM).
- may be received at the AGM, if no valid nomination was received by the due date. Normal consent and qualification conditions apply.

Final Notice of AGM

A final Notice of the AGM will be issued no later than Sunday, 18 January 2026. This Final Notice will include, not least:

- Minutes of the previous meeting,
- Annual report(s) from the Committee,
- Financial Report,
- Nominees for Election of Officers
- Any remits, notice of motion or anything to be included as business, beyond that prescribed above, that the Secretary has received by Sunday 4th January 2026 (20 working days before the AGM)

Important Dates:

Nominations for Committee Members	17:00, Saturday 21st December 2025
Subject for Discussion/Remit	17:00, Sunday 4th January 2026
Final Agenda for AGM	emailed by Sunday 18th January 2026
Annual General Meeting	18:00, Saturday 31st January 2026

Coming Events - Details on our Website

Register online



2026 - National Rally/AGM, (South Island), Friday 30th January - Monday 2nd February 2026

Updated: 03/08/2025 BMWMC AGM Rally 2026 - Friday 30th January - Monday 2nd February 2026: Save the dates - more details and registration to follow nearer the event: Email any questions to agmrally@bmwmc.nz
Accommodation - Please book directly: Harvest Hotel at the Gate Phone: 03 445 1777 Booking Code for Discount - #72266 AGM/National Rally:

[Find out more](#)

Harvest Hotel, Cromwell,
6 Barry Avenue
Cromwell, 9342 New Zealand
[+ Google Map](#)



Book your Accommodation and Ferry crossings Now

Bluebridge discount has been extended but Interislander yet to extend beyond 2025.



New roads ahead!



THE BIKE MAINTENANCE SHOP IS RELOCATING!

We're trading city traffic for open roads and moving our services to **Te Kauwhata**.

Same trusted BMW expertise, now in a new setting.

Why choose us?

- ✓ **BMW SPECIALISTS**
Over 30 years of hands-on experience with BMW motorbikes.
- ✓ **PRECISION SERVICE**
Quality, efficiency, and attention to detail in every job.
- ✓ **AUTHORISED REPAIRS**
Approved by all major insurance companies.



Call 021 128 5546

or visit thebmshop.nz to book your service

contact@thebmshop.nz
 www.thebmshop.nz

[thebikemaintenanceshop](https://www.facebook.com/thebikemaintenanceshop)
 Te Kauwhata



Southern Stories

Tharon Knoetze - southern@bmwmc.nz



Our November BMWMC ride took us deep into the heart of Central Otago, with our destination set for historic Oturehua, a small township packed with character, known to many for its rugged winters and as the legendary home of the Brass Monkey Rally. While the Brass Monkey was famous for frostbite-level temperatures, our visit could not have been more different!

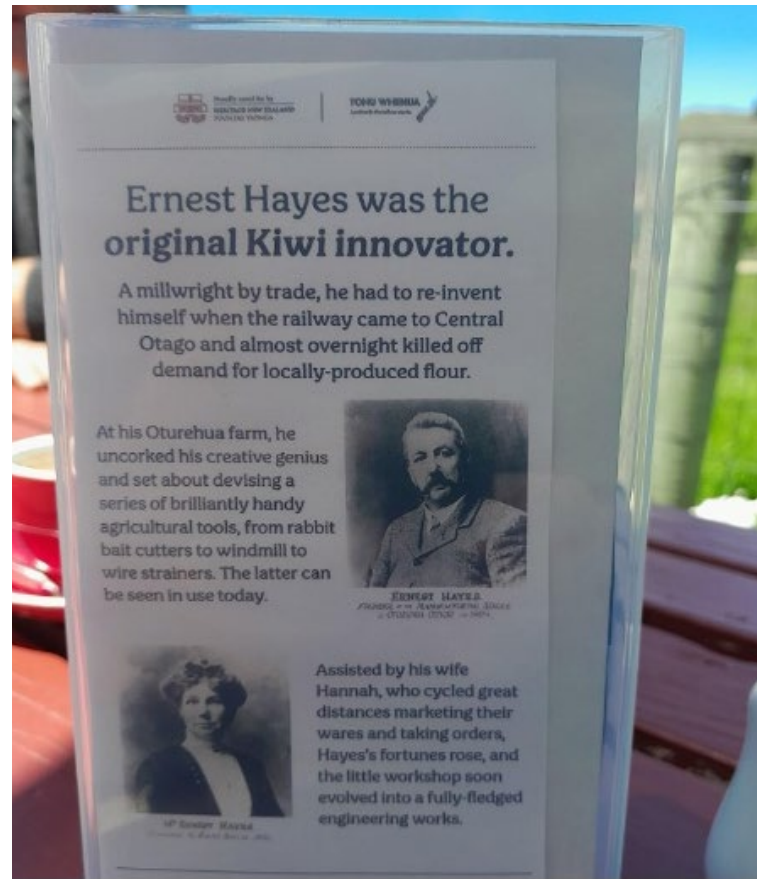
We gathered at Hayes Engineering Homestead, now beautifully restored and on site, Hannah's Café, where we had lunch. The site is a slice of Kiwi ingenuity and rural history, originally home to Ernest and Hannah Hayes, pioneers who engineered tools that spread across New Zealand's farms. Today it's a museum and café full of charm, heritage, and true Central Otago warmth.

Their Country hospitality was top-notch; friendly faces, great service, and food that hit the spot.

This was one of our biggest group rides in quite some time, with members joining from far and wide: Jack's Point (and a warm welcome to our new member, Stephan!), Oamaru, Alexandra, Te Anau, Invercargill, Clinton, Lake Hawea, Dunedin, and the Cromwell region (apologies to anyone I may have missed from this list)

A special shout-out to Barry, who clocked an incredible 121,000+ km on his beautiful Beemer. That's some serious mileage. Well done!

The weather turned it into a perfect riding day, a spring scorcher



that felt more like mid-summer with temperatures nudging close to 30°C. Riders gathered around the tables sharing stories, enjoying a laugh or two, and wishing each other a safe





journey home before everyone split off in their own directions.

Thanks to everyone who made the trip such a great one.

Until next month, stay safe and stay on two wheels!

Tharon #2595





LIKE YOU, ESCAPING THE ORDINARY IS IN OUR BLOOD



We design insurance for those who live for the ride.

Nothing comes close to the journey. All that matters is being connected to the road or trail, and the bike. Some people don't get it. We do. Two, three or four wheels... whatever your bike, with Star Motorcycle, we'll help you protect your means of escape.

ESCAPE THE ORDINARY

→ Call: 0800 250 600

→ Visit: starinsure.co.nz



BMW Motorrad Model Update 2026.

Additional attractive new colours and special equipment.



Munich. For the 2026 model year, a number of additional model care measures will be incorporated into the BMW Motorrad range.

BMW R 1300 GS.

- Style Trophy in new colour scheme White Aluminium Matt metallic / Racing blue metallic.

BMW R 1300 GS Adventure.

- Special equipment: Hand guard extension in the Touring Package.
- Engine guard Enduro in Enduro Package Pro.



BMW S 1000 XR.

- Optional equipment: USB charging port included in the Dynamic Package.
- Style Sport in new Sage Green metallic colour scheme. Gravity Blue metallic no longer available.

BMW F 900 GS.

- Style Passion in new Snapper Rocks Blue Matt metallic colour scheme. Sao Paulo Yellow uni no longer available.
- Style Trophy in new colour scheme Racing blue metallic / Light white uni/Racing red uni and Racing red uni for rear frame. Light white uni / Racing blue metallic no longer available.

BMW C 400 GT.

- Style Exclusive in new Blue Ridge Mountain metallic colour scheme and rim colour gold. Diamond white metallic no longer available.

BMW C 400 X.

- Style Rugged in new colour scheme White Aluminium Matt metallic and rim colour Black. Kalamata Matt metallic no longer available.



Must check the expiry date
on my membership card with
BMWMC
Expiry date looms and don't
membership@bmwmc.nz



AGM/National Rally 2026
30th Jan - 2nd Feb 2026
Register on the website soon
www.bmwmc.nz



BWMC
Remember to write a note
about my travels and
email it to
editor@bmwmc.nz

Check the website for
the latest details.

Marketplace - FOR SALE

To advertise, please email
newsletter@bmwmc.nz

Marketplace is a service for members of BMWMC, NZ.

Advertisements will be accepted from members, commercial traders and non-members when it is considered in our members' interest to do so. No charge is made for Marketplace advertising. The Editor and Executive reserve the right to reject or modify any advertisement considered inappropriate and take no responsibility for errors or omissions, the quality of items, claims made, or for any transactions that ensue.

Advertisements run for approx. 3 months from the date first published unless otherwise arranged with the Editor.

Motorcycle/Car Number Plates for Sale:



R13GS is offered at \$1,170
Certificate and transfer sale only



BMW 2U - \$750 - 1 Plate as shown

WE BMW - \$750 - 2 Plates as shown



Advertised on behalf of others.
If these are of interest, please
contact Colin 027 9222 350 or
editor@bmwmc.nz and we'll put
you in touch.

ANCHOR INN MOTEL
KAIKOURA

**BOOKINGS
ESSENTIAL
BOOK ONLINE**



KAIKOURA'S SUPERB WATERFRONT LOCATION

WELL APPOINTED **FAMILY APARTMENTS** - One Bedroom Garden View (Sleeps 4); Two Bedroom Ocean View (Sleeps 4)

STUDIOS (Sleeps up to 2)
Executive Ocean View with Spa; Superb Ocean View; Standard Garden View

Reservations Freephone 0800 72 00 33

208 Esplanade, Kaikoura | Ph: (03) 319 5426 | Email: info@anchorinn.co.nz
www.anchorinn.co.nz

The Anchor Inn Motel is owned and run BMW Club member
Paul Meikle #3311



Cont...

Marketplace - FOR SALE

To advertise, please email
newsletter@bmwmc.nz

BMW F650 GS (Blue /single)

2007 model / 38,850 km

WOF 17/February/2006

Will have 3 months rego

Standard ABS / Heated grips

LAMs approved.

New disc pads front and rear /

Brake fluids changed / Engine oil and filter

Unifilter cleaned and re oiled

New battery / Near new chain (100k approx)

Extras:

BMW top box / Front and rear dual purpose tyres
40% used. New Continental TKC 80 rear tyre.

Pivot pegs / Higher screen / Spare dark screen

\$5,500 ONO

Contact Iain McDermid, Loburn, Rangiora, South Island.

021 0816 1657

e. ihmcdermid@gmail.com



Marketplace - FOR SALE

To advertise, please email
newsletter@bmwmc.nz

Registered: December 2018

Mileage: 82,418 km

WOF: Valid for 12 months

Condition: Very tidy -
exceptionally well looked
after

Service History: Full BMW
service history

Extras Included:

Owner's manual

One used spare tyre

This is a fantastic adventure
bike that runs beautifully
and has been meticulously
maintained throughout its
life. If I hadn't bought a new
one, I wouldn't be parting
with it. Reliable, powerful,
and well-equipped - this GS
is ready to go.

Contact: Dean - 027 406 0160

Based in Huntly

\$16,500



WANTED.

R65 or R45 AIRHEAD. Must be registered or on hold.

Project bike no problem but preferably in good condition.

1985 or earlier would be great as Rego cost is less & WoF is now
12 month.

Please call me, Bob 021 224 0409.



BMW Motorcycle Club

New Zealand 1975 - 2025



BMW Motorcycle Club
New Zealand



Making Life a Ride!



**NO IFS.
NO BUTS.
MAKE LIFE A RIDE.**

Whatever you do, throw yourself into it. Make the best of it.
Because then you'll reach higher than you ever thought possible.
Get the right gear for it at bmw-motorrad.com

IMPORTANT NOTICE

The BMW Motorcycle Club New Zealand is an organisation where members come together to enjoy rides to nominated destinations and participate in social occasions. The ride organiser nominates the destination and any regrouping points along the route, but has no control over how riders behave on the road. Club rides are not competitive events.

Riding/Attendance Code:

1. Personal Responsibility

All members riding on Club rides do so as individuals responsible for their own safety and must consider the safety of others on the ride.

2. Motorcycle Condition

Members must ensure their motorcycles are safe and legal to ride, meeting at least Warrant of Fitness standards.

3. Protective Gear

Riders, pillion, and sidecar passengers must wear at minimum:

- New Zealand Approved Motorcycle Helmet
- Sturdy footwear
- Gloves
- Clothing capable of offering protection in the event of an accident

4. Assisting Others

Members are expected to assist anyone experiencing a mishap during a ride.

5. Ride Organisation

Ride organisers will nominate the destination, regrouping points, and other stops. Organisers are not responsible for the behaviour or safety of other riders.

6. Riding Pace

Riders must ride at a speed and in a manner comfortable to them. Do not exceed your personal comfort limits.

7. Route Familiarity

Riders unfamiliar with the route should arrange to follow another rider who knows the way and rides at a comfortable pace.

8. Group Riding Formation

Riders travelling as a group should adopt a staggered formation with a safe following distance:

- Dry conditions: approximately two seconds behind the rider in front
- Inclement conditions or loose surfaces: longer than two seconds

9. Participation at Own Risk

Neither the Ride Organiser nor the Club is responsible for participants' safety. All participants travel on public or private roads at their own risk and must comply with all applicable Road Rules and Laws.

10. Photography & Media Permission

By attending any Club ride or event, members consent to photographs, videos, or other media being taken of them by any person present. These images may be used in Club publications, social media, or promotional materials. The Club is not responsible for the use of any images taken by third parties.



Area Representatives



NORTHLAND

Ian Macartney
027 281 0242
northland@bmwmc.nz

AUCKLAND

Stephen Parkinson
021 989 092
auckland@bmwmc.nz

WAIKATO

Chris Townson
027 390 4239
waikato@bmwmc.nz

BAY OF PLENTY

Alan Belworthy
027 496 0748
bayofplenty@bmwmc.nz

TARANAKI

Wayne Higgins
027 506 6488
taranaki@bmwmc.nz

RANGITIKEI

Murray Petherick
027 433 6657
rangitikei@bmwmc.nz

EAST COAST

Alan Robinson
027 432 4503
eastcoast@bmwmc.nz

WELLINGTON/WAIRARAPA

Denis Hulston
027 443 3604
wellington@bmwmc.nz

TOP OF THE SOUTH

Gretchen Holland
021 266 3867
topofthesouth@bmwmc.nz

CANTERBURY

Jason Batchelor
027 429 5905
canterbury@bmwmc.nz

SOUTHERN

Tharon Knoetze
021 034 1760
southern@bmwmc.nz