





BMW Clubs
International Council



BMW Motorcycle Club
New Zealand



EDITORIAL COPY TO:

Colin Gates
newsletter@bmwmc.nz

OTHER CORRESPONDENCE TO

The Secretary
BMWMCNZ
PO Box 109-245
Newmarket
Auckland 1149
New Zealand

PRESIDENT

Chris Souness
021 494 952
president@bmwmc.nz

VICE PRESIDENT

Stephen Parkinson
021 989 092
vicepresident@bmwmc.nz

SECRETARY

David Fish
021 927 901
secretary@bmwmc.nz

TREASURER

Colin Gates
027 9222 350
treasurer@bmwmc.nz

MEMBERSHIP SECRETARY

Dave Oldershaw
029 200 3679
membership@bmwmc.nz

AREA REP LIAISON

Ian Macartney
027 281 0242
arl@bmwmc.nz

BMWMC GEAR

shop@bmwmc.nz

PRIVACY OFFICER

privacy@bmwmc.nz

**THANK YOU for your
feedback and stories**
feedback@bmwmc.nz

Contents

- 3 New Members, last month (below)
- 5 President's Podium
- 6 Area Reports Start
- 29 BMW Motorrad Press Release- 40,000+ Visitors...
- 32 Members input
- 36 Events
- 37 Market Place
- 40 Area Representatives v

Welcome to our New Members

We hope you'll take part in many of your local and national events. Your Area Rep will be pleased to introduce you to other members in your area. Our monthly newsletter is an open forum for all members. If you fancy a story and/or photos published about your ride, the rebuild of your bike, a book you might have read or a movie you have seen lately, or just want to get something off your chest about how the club is going, then please email/phone the Editor no later than the 2nd day of the month.

We look forward to your contributions.

A Very Warm Welcome to:

BOTTEMA	JAN	WARKWORTH
BRADFORD	STEVE	WHITIANGA
BROPHY	VAUGHN	NEW PLYMOUTH
BRUNTLETT	MATT	WHANGAPAROA
BUTLER	BRETT	AUCKLAND
CLARK	STEPHEN	JOHNSONVILLE
CLOETE	MARTIN	WHANGANUI
CROSBY	PAUL	TAURANGA
GATES	TERENCE	AUCKLAND

Cont...

Please Note: Any material intended for publication in the newsletter should reach the Editor no later than the 2nd day of any month but the earlier the better. The Newsletter is an open forum for all members. Views expressed by members may not necessarily represent the views of BMWMC. Publication of all material is subject to the Editor's discretion. Photos are courtesy of article authors and/or usually credited when known, unless requested otherwise.

Cover
picture: **Poppy on Motorcycle**

Photo by: **Ian Macartney**

Date: **July 2025**



BMW Clubs
International Council



BMW Motorcycle Club
New Zealand



A^{nd... Wow!}

GOSLING	MARK	AUCKLAND
HOBBS	ANDY	WHANGANUI
HOWE	KEN	WELLINGTON
JAMIESON	SHANE	TE AWAMUTU
MCCALLUM	GEORGE	TAURANGA
MCKENZIE	MIKE	TAURANGA
MILLER	FORRIE	WELLINGTON
MILLER	ANDREW	WHAKATANE
MILLER	MATT	TAURANGA
MITCHELL	KARLA	LEVIN
MURCOTT	RICHARD	WELLINGTON
O'NEILL	ANDREW	TAURANGA
PALMER	CRAIG	DUNEDIN
POTGIETER	CHARL	MAUNGATAUTARI
PRETORIUS	STEPHANUS	TAURANGA
SHIRLEY	STEVE	TAURANGA
STAFFORD	TREVOR	AUCKLAND
STOKES	MICHAEL	MURIWAI
STOKES	TREVOR	CHRISTCHURCH
STOKES	KARL	CHRISTCHURCH
Taylor	GRAHAM	PALMERSTON NORTH
THOMSON	HADLEIGH	AUCKLAND
TRISTRAM	SCOTT	AUCKLAND
VAN HOUT	JOHN	INVERCARGILL
VELDTHUIS	JOHN	MANAIA
VISAGIE	GERRIE	AUCKLAND
WAKELIN	KARL	WARKWORTH



President's Podium

Chris Souness



BMW Motorcycle Club
New Zealand



August 2025

Hi everyone,

I recently noticed that I have started to notice a slight ringing in my ears at times, which is a bit of a cause for concern. Whilst I'm not like many of you who are doing huge K's on your bikes, it gave me food for thought regarding the many earplug options I have tried over the years and my historic lack of motivation to use them when riding my bike. I just haven't found a set that really works for me. I'm not saying the issues I have can be directly attributed to my bike riding but I'm sure there must be some sort of link!

As we clock up the kilometres and enjoy the open road, earplugs are one piece of gear that often gets overlooked unfortunately. While helmets, gloves, and jackets are the norm, protecting our hearing is just as vital for our long-term riding enjoyment. Here is a little overview about earplugs that my friendly (AI) platform managed to dig up for me off the WWW which I thought might be of interest.

Why Earplugs?

Even with a full-face helmet, wind noise at highway speeds can exceed 95 dB, that's louder than a lawnmower and enough to cause permanent hearing damage over time. Unlike engine noise, wind noise is relentless and can't be tuned out. Earplugs reduce this noise without blocking out important sounds like sirens, horns, or your comms system.

The Benefits:

- **Hearing Protection:** Prolonged exposure to high decibel levels can lead to tinnitus or hearing loss. Earplugs help preserve your hearing for the long haul.
- **Reduced Fatigue:** Less noise = less mental strain. Riders often





report feeling more alert and less tired after long rides with earplugs.

- Improved Focus: With reduced background noise, it's easier to concentrate on the road, your bike, and your surroundings.

Choosing the Right Earplugs:

There are plenty of options, from disposable foam plugs to custom-moulded ones. Look for plugs that reduce noise by 20–30 dB and are comfortable under your helmet. Some brands even offer filters that let in speech frequencies while blocking wind.

Remember, we are happy to invest in gear to protect our bodies, so let's not forget our ears. Whether you're riding to the next rally, on a Club monthly ride or just out for a Sunday spin, earplugs are a small addition that can make a BIG difference.

What's in the calendar:

- GS Rallye 2025: 31st October – 2nd November – Whanganui
- South Island RAG Rally: 7th – 9th November - Kaikōura
- National Rally/AGM (South Island): 30th January – 2nd February 2026 Cromwell.
- All the details can be found in the Newsletter and our website.

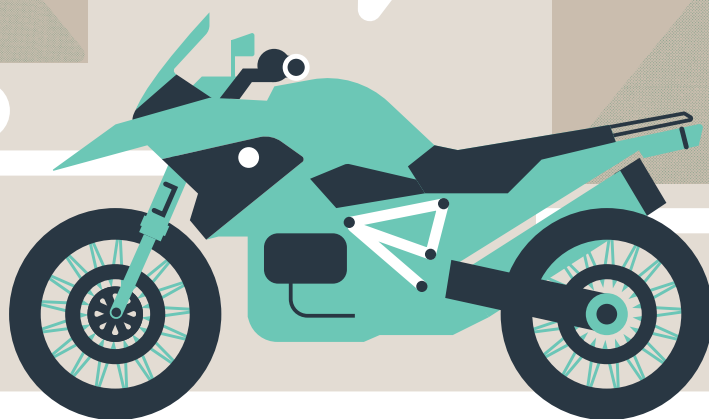
All the best and ride safe.

Stay warm and dry, ride smart.

Chris



I'll SHOW
YOU PARTS OF
THE WORLD
OTHERS' FEAR



Just like a BMW R1200, every motorcycle has a unique character. Which is why we design insurance that's anything but off-the-shelf. If you have a bike that helps you escape the ordinary, talk to us about customised insurance you won't find anywhere else.

Star Insure Morotcycle. It's the insurance your bike would choose.

ESCAPE THE
ORDINARY



0800 250 600



starinsure.co.nz

 **starinsure**
Motorcycle

Waikato Wonders

Chris Townson



We had a great turnout at this month's meeting on the 16th of July at Fez Kabab, with six of us making it along. The food hit the spot as always, and it was good to catch up in a more relaxed setting. Plenty of laughs, a bit of planning chat, and a solid reminder of why these monthly catch-ups are worth keeping on the calendar.



for lunch. Aside from the occasional technological hiccup with directions, the group kept a good legal pace, enjoying smooth riding and each other's company along the way.

On the 27th of July, seven riders on six bikes gathered at the Giant Cow in Morrinsville for a scenic ride to Kaiaua. The route took us around Lake Waikare, offering great views and enjoyable roads as we made our way to the Corner Stone Café

The return journey took us through the Maramarua Forest, where the twisty roads kept things interesting as we wound our way back toward Morrinsville. The weather couldn't have been better — clear skies and mild temps made for an ideal day on

the bikes. A great mid-winter outing all around.

Chris #3983

email
waikato@
bmwmc.nz





July's ride to Marsden Cove



Sunday, July 20th, Auckland had a ride to Marsden Cove Marina Café. Met at our usual northern ride muster point at Westgate, where a respectable group of 10 riders gathered – oh, plus Poppy, a very keen Jack Russel, riding pillion with her boss Damien. Seemingly, whenever Poppy spots Damien putting on his riding gear, she goes and jumps onto the seat of the bike so she doesn't get left behind! Well, we consider ourselves an inclusive club, so why not?!

We headed up the west coast,



where we were supposed to pick up 3 along the way – that turned into 5 extras. Then, at our usual rest at Wellsford, 2 more turned up. That made 17, plus another couple pulled up for a chat, 19. So, quite the gathering.

2 left us there, and then Greg Stimpson, in the process of taking photos of



the mob, managed to trip over the curb and damage himself. Greg tried to carry on but was forced to bail out a bit further down the road. It turns out he'd broken his wrist!

That left 14 – and Poppy – carrying on to Marsden Cove via Mangawhai and Waipu, where we linked up another couple of Auckland members – Peter and Lynette Zink – who were on holiday up on Paihia, but rode back for the gathering.

Of course, Northland turned out a bunch of members to meet us there, and a jolly time was had by all.

Good weather, good people, and a generally satisfying day.

David #3854



East Coast Exclusive

Alan Robinson



Going around the table we have Tony, Maria, Pam, John, Ann, me (Alan), Peter, Bronwyn, Les, Stella and Walter.

This is going to be a very short report as there is little news to tell, given the time of year and how cold and wet it has been in the Bay recently.

Fortunately, our monthly dinner remains a highlight and in July we met up at an Indian restaurant in Napier:

Bollywood Stars. The food was amazing and the service impeccable. This was the first time at the restaurant for most of us and I think it will find a place on all of our favourites lists.

Alan #4049

Area Report: Taranaki Tales

Wayne Higgins



Early July the weather was not playing ball so it was no surprise we only had three bikes for the monthly ride. However, Rob and Julie popped along at the meeting point for a quick catch up.

We left Inglewood Z and headed up Dudley Road to take as many back roads as possible.

Our next stretch was along Mangorei Road, heading up to Pukeiti, a fantastic garden to explore on a fine day, complete with an excellent café. Pukeiti is certainly worth a visit when in Taranaki, and the narrow, winding roads leading there add to the experience.



Given the weather conditions we decided not to stop here for refreshments and carried on to Opunaki via back roads once again. If travelling to Opunake from New Plymouth, Wiremu Road is closer to the mountain, has a few more twisties and less traffic.

Upon arriving in Opunake, we peeled our wet weather gear off and enjoyed lunch at the Sugar Juice Cafe, the food was just what the doctor ordered.

After Lunch Leo headed back home to Hawera while Ian and I went the opposite way to New Plymouth. I stopped at Ian's place for a look at his impressive collection of toys (bikes and cars).

Here's hoping for better weather to come so we can catch up with more members.

Wayne #4097



Rangitikei Roundup

Murray Petherick



July's Monthly Ride



Among the windmills

Changeable weather leading up to ride day left a bit of uncertainty but when the day came, the weather was cloudy but fine, although a couple of showers were threatened for later in the afternoon.

Five riders gathered at the café in Ashhurst and, after kicking around

a couple of ideas, decided to head over the new Tararua highway and then take some back roads down to Eketahuna for lunch. The ride over the hill was really good, and a couple of the attached pics show some of the engineering achievements and the resulting scenery from the highway





construction. From the eastern roundabout, the group headed through Balance and I left them at the start of the Pahiatua Track to head home and continue my holiday preparations. The remaining four, Neville, Peer, Rob G and Barry P, rode down through Mangamaire to have lunch at Eketahuna.

After lunch, they took more back roads, including Mangaone Valley Road, and then headed back over the Pahiatua Track. From there, they dispersed to their respective Palmy, Whanganui and Levin destinations.

A small group but a good day out, and no rain!

Murray #2690

ANCHOR INN MOTEL
KAIKOURA

BOOKINGS ESSENTIAL
BOOK ONLINE

KAIKOURA'S SUPERB WATERFRONT LOCATION

WELL APPOINTED **FAMILY APARTMENTS** - One Bedroom Garden View (Sleeps 4); Two Bedroom Ocean View (Sleeps 4)

STUDIOS (Sleeps up to 2)
Executive Ocean View with Spa; Superb Ocean View; Standard Garden View

Reservations Freephone 0800 72 00 33

208 Esplanade, Kaikoura | Ph: (03) 319 5426 | Email: info@anchorinn.co.nz
www.anchorinn.co.nz

The Anchor Inn Motel is owned and run BMW Club member
Paul Meikle #3311

QUAL MARK SILVER
WARM WELCOME



**BMW
MOTORRAD**

TRADE UP RIDE OUT

Your next ride shouldn't wait

It's time to experience the next evolution of GS. Trade in your current motorcycle and enjoy trade-in assistance toward your new BMW R 1300 GS or R 1300 GSA.

#SPIRITOFGS

MAKE LIFE A RIDE

*Some exclusions may apply. Colour options shown and models are subject to availability; options and colours may differ from images. All prices, availability and specifications are subject to change without notice by BMW Motorrad New Zealand. Offer valid on R 1300 GS Trophy Pure and R 1300 GSA Trophy models only. Valid while stocks last.



**R 1300 GS TROPHY PURE
\$2,000 TRADE-IN ASSISTANCE***



**R 1300 GS ADVENTURE TROPHY
\$3,000 TRADE-IN ASSISTANCE***

Authorised BMW Motorrad Dealers

Boyd Motorcycles Hamilton
403 Te Rapa Road
Waikato
(07) 850-4522
motorcyclesales@boyds.co.nz
boydmotorcycles.co.nz

CMG Motorcycles Christchurch
122 Saint Asaph Street,
Sockburn
(03) 353-6383
ride@cmgmotorcycles.co.nz
cmgmotorcycles.co.nz

Continental Motorrad Auckland
45-65 Wairau Road, Wairau Valley,
North Shore
021 406 326
salesakl@cmbmw.co.nz
continentalmotorrad.co.nz

Continental Motorrad Wellington
138 Hutt Road
Kaiwharawhara
(04) 499 9030
saleswlg@cmbmw.co.nz
continentalmotorrad.co.nz

Experience Motorcycles Auckland
625 New North Road
Kingsland
(09) 845-5950
sales@experiencemotorcycles.co.nz
experiencemotorcycles.co.nz

McIver & Veitch Dunedin
112 Crawford Street
(03) 477-0236
sales@mciverandveitch.co.nz
mciverandveitch.co.nz

Mount Motorcycles Tauranga
23 Totara Street
Mount Maunganui
(07) 575-4190
sales@mountmotorcycles.co.nz
mountmotorcycles.co.nz

Meeting some longtime members

Colin Gates



One of the great joys of being part of BMWMC is the people you meet along the way. Those riders whose passion for bikes and camaraderie has shaped the club over five decades.

Recently, my wife and I had the privilege of visiting Ian and Vivienne Hawken, a wonderful husband and wife team who were dedicated and financial club members between 1989-2021 before stepping back, continuing to keep in touch.

Ian, responding to one of our emails, kindly reached out offering some photographs from their time in the club, the early years in particular. Images of rides, rallies, and moments that have become part of our shared story. Rather than simply arranging for them to be dropped off or posted, I welcomed the opportunity to meet and collect them in person. It was a chance to thank them properly for their long-standing support and perhaps a chance hear more of our club's history.

We arranged to meet



Ian and Vivienne Hawken

over lunch and were greeted with the warmest of welcomes. And, in no time, the conversation flowed. Listening to their tales and those of others recently, it is easy to understand why the Club has sustained these last 50 years in such great shape. A success that has been built on strong foundation through the efforts and time given by all the volunteers and members alike.

Unsurprisingly, many names were unknown to me, not least that Vivienne was once our Treasurer. No matter, the photographs and the

40th Anniversary book helped piece events together.

It is clear that the club is more than just a pastime. It was and is a wonderful community. A source of friendships, and a place where memories, experiences and advice are given, received and kept.

Before we left, I presented Ian and Vivienne with a small token of appreciation on behalf of the BMWMC, a copy of our 40th Anniversary book and a 50th Year badge. Both shown

in the photograph, along with the laminated photographs that they gave us. Two long-time members holding tangible symbols of the club they helped shape, and whose history they remain.

Since our meeting, Ian reached out to other ex-members. Some I have spoken with, others by email, and believe we will soon have some additional memorabilia shared with us, which will be very welcome. It all helps our archives, and to preserve the history of BMWMC for future members to enjoy.

Colin #3799

Wellington Wanderings

Denis Hulston



Club Social Meet & Eat at the Petone Club - 7th July

Our usual crew, with apologies for those unable to attend, turned out for our monthly gathering and meal held on the first Monday of the month, always a happy and chatty get together.

July's ride's

Despite the variable July weather, we did manage to clock up 650km on two very good rides.

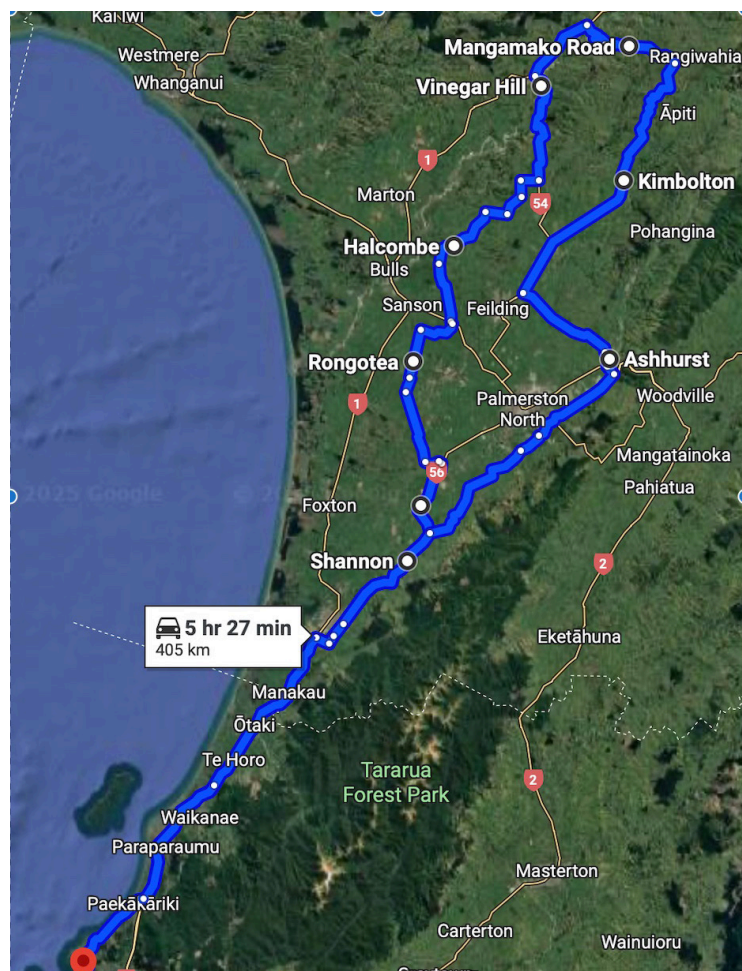
Manawatu Ohingaiti Kimbolton ride

Twelve riders joined this 450km sealed roads ride on a fine weather riding day, after many days of unpredictable weather. It was cold but sunny and with a very light northerly breeze. We left Mana at 9am for a warm up coffee and food stop at The Horseman in Shannon, where it was warm enough to sit outside and soak up the sun. We rode back roads through Opiki and Rongotea to avoid the SH1 from Foxton and emerged at Sanson for a quick fuel stop for those that needed it – no imminent fuel stops on the horizon for our chosen route. We continued off the main routes, through Halcombe and rode through to Vinegar Hill, with a stop at Stormy Point for views of the Rangitikei and western hills. Ruapehu was hiding in some light clouds, despite the sunshine. We joined SH1 for a short ride to Ohingaiti where we crossed the Rangitikei on the old Ohingaiti Bridge and took Otara and Mangamako roads to Pemberton Corner, before arriving at Kimbolton for a rather late lunch stop.

Pemberton, was a small town with accommodation, twenty-one houses, a post-office and school back in 1888. By 1893 there was a general store, hotel, butchers, blacksmith and cricket club - memories and little evidence now of a

ghost town.

We had planned to ride through Ashhurst with the option to return through the Wairarapa, but with the day pushing on and the temperature dropping we took a more direct route home via another fuel stop in Feilding and a return through Shannon. It began to get chilly for the final ride through



Transmission Gully.

This was a great day riding – fine riding weather, sunshine and no wind despite a cold start and finish.

Twelve riders: Chester, Sean, Stephen (welcome back to the club), Scott, Glenn, Martyn, Ian M, Ian H, Dave O, Philip, Trevor, Denis.



Shannon coffee and warm up



Stormy Point without the storm or wind before the descent through to the Rangitikei and Vinegar Hill



Otara Road Rangitikei – Ian, Keith, Dave, Scott, Glenn, Dave, Mike, (Dave and Denis)



Rangitikei River flats from Otara Road



Ready for the next stage at Otara Road- Glenn, Sean, Chester



Pemberton Corner, once Pemberton town

Remutaka, Lake Ferry, Martinborough - Sunday 27th July



Another good forecast.

Hoping that it's reliable, we arranged an impromptu ride to Lake Ferry Hotel for "famous fish and chips" lunch.

Nine joined the ride – Denis H, Annie S, Keith T, Michael McK, Dave O, Stephen C, Philip Y, and Ian and Lynne by car.

We rode a relatively direct route through Kahutara, as the western lake route was likely to be shady, cold and possibly icy. It was a leisurely ride over the Remutaka with quite a line of traffic behind a couple of buses, but with no logging trucks on Sunday. Wairarapa looks good when it's green and the Remutaka range with shadow, sunshine and smattering of cloud makes a great backdrop to the farms and lake.

We caught up with the haps over a leisurely lunch, and then chose to take a leisurely ride back via a coffee stop in Martinborough to make the most of the sun outside the In The Neighbourhood Café. This was a 200km relaxed ride. It was good to be able to squeeze it in between dubious weather as a means of tallying up some kilometres for July.

Denis #3184



Lake Ferry - Lake Wairarapa, Remutaka Range



Famous fish & chips Annie, Ian, Keith, Michael, Stephen, Dave, Philip, Lynne (Denis)



@ Martinborough: Lynne, Keith, Michael, Dave, Stephen, Ian, Annie (Philip, Denis)



Line up - Martinborough

Top of the South Beemers/Te Tauihu

Trevor Muddle



Brunch - Sunday 13th July 2025



It was a nerve-wracking lead-up to July's monthly ride - a couple of great rides were planned but Mother Nature had come along and given herself a bath, washing many roads and tracks away along with our two routes. With the weather still looking changeable, we decided to have a more sedate coffee catch-up at the Grape Escape in Richmond - a lovely setting, all managed to squeeze around an inside table and enjoyed some good home-cooked lunch and great coffee!

Being mid-winter, many of the BMW group had taken leave overseas - I am still awaiting their leave cards to approve! And others had family events. But 8 of us did meet up, and luckily another "sensible" member also arrived on their bike, Anja!

Was great to see all, many had not caught up for a while and we spent quite some time after lunch admiring Anja's "new" BMW before she and I set off on an enjoyable ride up the Moutere inspecting some of the re-modelling mother nature had undertaken - one being the Sunday Creek bridge - that's not going to be operational for a little while ...



Infrastructure repairs have been going well, and many roads and trails are now open again, but not surprisingly, some are taking a little longer to bring back to their former state. As much as I'd like to lead these planned routes this month (August) I shall hold fire and roll them out again in the summer once I have ridden them in advance, confirming they are passable.

Trevor #4039

ARCADIA MOTEL

CHRISTCHURCH

Comfortable, spacious affordable accommodation



FREEPHONE 0800 272 23 42

564 Ferry Road, Woolston, www.arcdiamotel.co.nz
Geoff Lester 027 285 1293



BMW
MOTORRAD

PRESENTS



KAI IWI BEACH HOLIDAY PARK WHANGANUI | 31 OCT - 2 NOV

Route Options Sealed; Gravel and Seal; Challenge (Road bikes welcome).

Event fee \$295 Non-BMW Riders, \$245 BMW Riders & BMWMCNZ Members, \$175 Pillions

Includes 2 dinners, 2 breakfasts, tee shirt, stickers, sweep vehicle.

Old school route sheets and GPX files provided.

[Click here](https://bmw-motorrad.co.nz) or visit bmw-motorrad.co.nz to register

#SPIRITOFGS

MAKE LIFE A RIDE

KIWI RIDER
★★★★★
MAGAZINE

Lone Rider

METZELER
MOTORCYCLE TYRES



BMW Motorcycle Club
New Zealand



Canterbury Tales

Jason Batchelor



July's Social



Another cold winter's evening and despite several of the "regulars" being absent, we still had a good turnout at the Cranford Ale House. We had a good catch-up and a meal, and of course, discussed all things motorcycle. A couple of brave souls even came on two wheels!!.



July's ride

This was our advertised monthly ride, and as a good number of both road and gravel riders turned up (thanks, Nico, for inviting some extras), I led the road riders and spoke to Jacques about taking the gravel ride.

I actually have no idea who led the ride, as the road riders left first, and there was some discussion amongst the others as to how good Jacques's sense of direction was. The road ride went over Dyer's Pass Rd and wound around Governors Bay, and Teddington before heading back over Gebbies Pass and thru to Little River. From there, we headed up the Akaroa Hill and around the Summit Rd and then did a loop out thru Little Akaloa and Okains Bay. From there it was straight back up and over the top as the low cloud meant nothing to be seen from the Summit Rd and around the main Rd to Akaroa.

We had 6 bikes on the road ride, and it looked like about 8





or 9 bikes on the gravel option. From what I can gather, the gravel riders took Western Valley Rd, then up Harmans Track and down Pipers Valley Rd, and we all ended up at the waterfront for lunch.

After lunch the road riders headed home and I tagged along with the gravel folks and we headed up Jubilee Rd into some very heavy rain and low clouds, making seeing where we were going a challenge and then we struck what amounted to "Rush Hour" up the top along Bossu Rd as it appeared a large group of 4wd were coming the other way. Making for some slow manoeuvring so we could edge past them and continue home. By the time we came down the hill thru Little River, the rain cleared, and we finished off with a dry run home.

Thanks to everyone who came.
Jason #4267





LIKE YOU, ESCAPING THE
ORDINARY IS
IN OUR
BLOOD



We design insurance for those who live for the ride.



Nothing comes close to the journey. All that matters is being connected to the road or trail, and the bike. Some people don't get it. We do. Two, three or four wheels... whatever your bike, with Star Motorcycle, we'll help you protect your means of escape.

ESCAPE THE
ORDINARY



Call: 0800 250 600



Visit: starinsure.co.nz



Canterbury

Ralph Moore



And Alex said...

It was all Alex's idea to go for a nice winter ride up the south bank tracks on the Waimak River to Oxford for a pie, then carry on through Lee's Valley. Easy enough!

So, eight riders meet up at the Waimak on a sunny 2 degree morning and we headed off along river flats and stopbanks following the river up towards the gorge bridge. Soon we were into Oxford for a pie and coffee. Then we rode into the Ashley Gorge Road and wound our way along the narrow winding road in warm sunshine until we crossed the gorge bridge onto the cold side of the valley and immediately encountered a thick layer of ice covering the road. No traction here... plenty of slip... Soon one rider went down. We quickly had him back upright and mobile.

So we were riding very sedately through every patch of ice covered road. We cleared the gorge and got into the sunshine again in Lee's Valley

We now rode the length of the Valley on very smooth gravel until we reached the Okuku

River ford. The river was quite low, so we all crossed easily.

We soon reached Lee's Pass only to find that two riders were missing in action. By now we were enjoying 17.5 degrees. Pretty nice for mid winter.



Tricky riding conditions in the gorge



Into the sunshine in Lee's Valley



Crossing the Okuku



Smoko at Okuku River



Regrouping at Lee's Pass

So we headed back down the road and found Garth busy repairing a puncture in his rear tyre. He had picked up a fencing staple.

Puncture repairs... 😞



Cont...



Fence staple and ruined tube

Second repair.



So we pitched in and helped Garth fitting a 21" tube into his 17" rear tyre. Off we go again, and all was good for about 15 kms until Garths rear went flat on him.

So... we whipped the rear wheel out and fitted a 17" tube this time that another rider produced. Success !!

Time was getting on, So most riders left three of us to sort out the puncture problems and headed for home. We soon had Garth mobile again and headed into town for a coffee and quick chat before heading home ourselves.

Ralph #3082



Must check the expiry date
on my membership card with
BMWMC
Expiry date looms and don't
membership@bmwmc.nz



South Island RAG 2025
7th-9th November 2025
Register on the website soon
www.bmwmc.nz



BMWMC
Remember to write a note
about my travels and
email it to
editor@bmwmc.nz

Check the website for
the latest details.



BMW
MOTORRAD

PRESENTS



KAI IWI BEACH HOLIDAY PARK
WHANGANUI | 31 OCT - 2 NOV

Route Options Sealed; Gravel and Seal; Challenge (Road bikes welcome).
Event fee \$295 Non-BMW Riders, \$245 BMW Riders & BMWMCNZ Members, \$175 Pillions
Includes 2 dinners, 2 breakfasts, tee shirt, stickers, sweep vehicle.
Old school route sheets and GPX files provided.

Click here or visit bmw-motorrad.co.nz to register

#SPIRITOFFGS

MAKE LIFE A RIDE

KIWI RIDER

Lone Rider

METZELER
MOTORCYCLE TYRES



BMW Motorrad presents "The Speed Sisters" by [WOIDWERK]. Creative BMW R 12 and R 18 custom builds from the Bavarian Forest.



Munich/Garmisch-Partenkirchen. Two extraordinary custom bikes from the Bavarian Forest made their debut at the BMW Motorrad Days 2025: the R 12 and R 18 builds by [WOIDWERK]. Under the project name "The Speed Sisters," Ralf Eggl – founder and creative force behind [WOIDWERK] – crafted two unique interpretations that captivated both motorcycle enthusiasts and custom scene insiders in Garmisch.

A strong duo with character – "The Speed Sisters" project.

The goal of the project was to portray the BMW Motorrad cruiser models R 12 and R 18 as a custom-built sibling pair – stylistically connected, but deliberately not identical:

"Sisters, not twins," as Roland Stocker, Project Manager Heritage BMW Motorrad, puts it.

Execution was led by Ralf Eggl, the visionary behind

Cont...



[WOIDWERK], with BMW Motorrad providing the two Boxer base bikes: a BMW R 12 as a dynamic retro cruiser and a BMW R 18 as a bold, powerful statement bike.

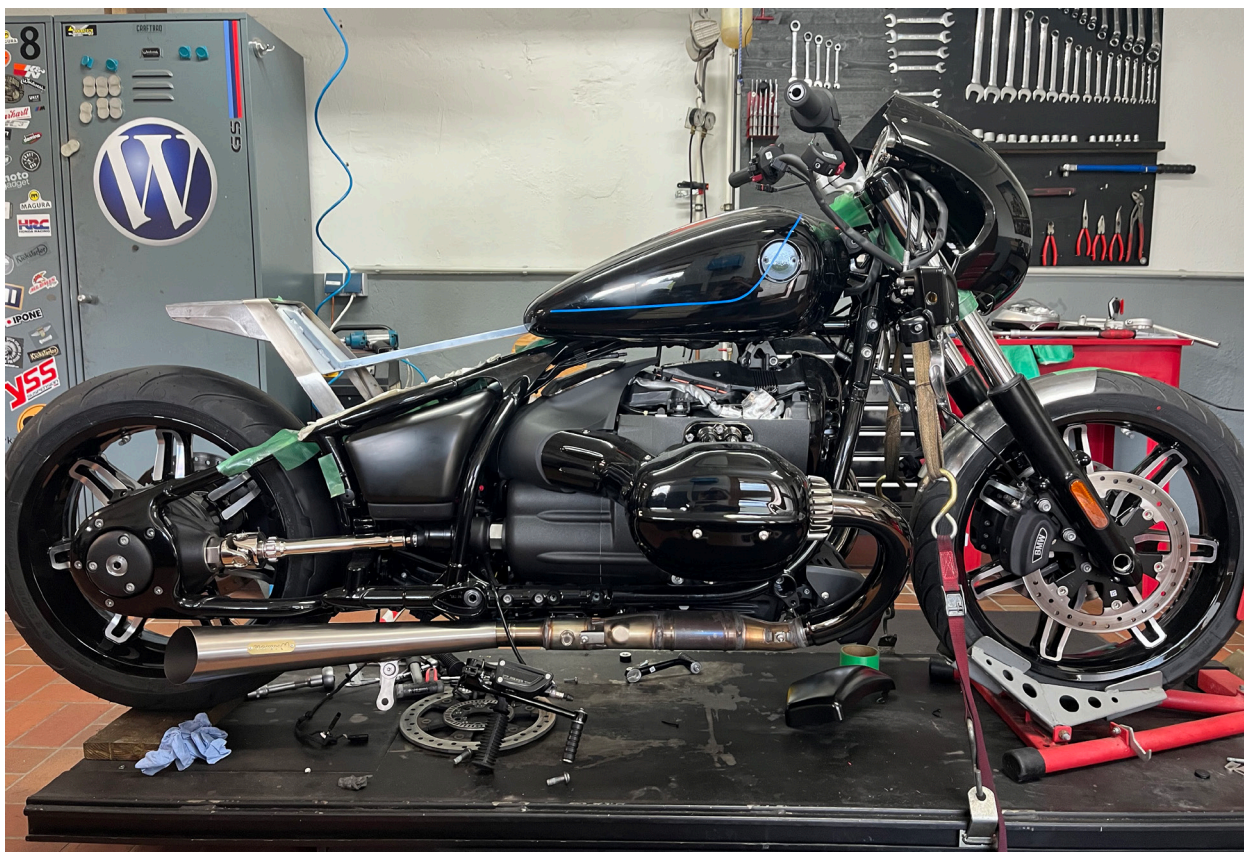
The result is a custom duo that not only highlights the technical and stylistic relationship between the two models but also gives each its own distinct identity.

BMW R 12 – the sporty, agile “little sister.”

[WOIDWERK]'s interpretation of the BMW R 12 emphasizes lightness, agility, and a modern design language. The rear



Cont...



section was heavily shortened in classic bobber style, giving it a clean, minimalist look, while the riding position was made sportier thanks to a new handlebar, modified foot pegs, and a custom leather-and-Alcantara seat.

A bespoke tank cover with Alcantara surface was CAD-designed and 3D-printed. Like on the R 18, it bears the project logo – a striking sign of the family connection.

A chassis raised by 15 mm, featuring a Wilbers shock absorber, enables an actively engaged riding position. The sporty setup is further underscored by a deep-black exhaust system from Hattech with a special ceramic coating – understated in tone, yet always present.





The taillight design features elegant Kellermann Jetstream sequential indicators styled like aircraft wings, seamlessly integrated into a tailor-made, filigree tail cowl. The paintwork, executed by Lackierzentrum Hirsch, reflects the distinct color concept of the “Speed Sisters.”

BMW R 18 – powerful, confident, and modern.

The big sister also received a comprehensive custom makeover. Raising and narrowing the tank by 30 mm, along with a floating, self-supporting seat and handcrafted “Targa hoop”, made the bike’s silhouette noticeably more dynamic.

A 20 mm chassis lift, using a Wilbers shock absorber, enhances the R18’s commanding presence.

The overall look and feel were sharpened both technically and visually: The standard braking system was upgraded to a high-performance radial setup – featuring 320 mm brake discs and radial brake calipers from the BMW R 1300 GS. This not only enhanced the sportiness visually, but also significantly improved braking performance.

Many components – from fairing brackets to the taillight housing to the signature swingarm end cap with integrated license plate holder – were custom-designed, CNC-milled, or

Coming Events - Details on our Website

Registration OPEN

31
October
2025



GS Rallye 2025 – 31st Oct – 2nd November 2025

Updated: 03/08/2025 GS Rallye 2025 - In association with BMWMC NZ Friday the 31st Oct - Sunday the 2nd November 2025 Registrations - Open Location: Whanganui All brands welcome - Let's ride and enjoy! Route options of: Sealed Gravel Mud/Gravel Challenge Sections (Full Knobbles Essential) Register [HERE](#) For any questions, please email gsrallye@bmwmc.nz Local campsite:

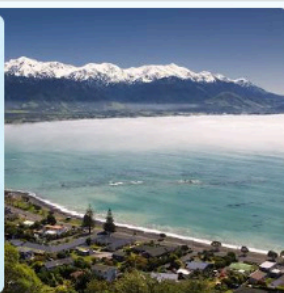
[Find out more](#)



[Kai Iwi Beach Holiday Park,](#)
66 Mowhanau Drive
Wanganui, 4574 New Zealand
[+ Google Map](#)

Registration OPEN

07
November
2025



2025 – South Island RAG Rally , Kaikōura – 7th-9th of November 2025

Updated: 03/08/2025 South Island RAG Rally: 7th-9th of November 2025 Kaikōura! We're going to be at the Top 10, Kaikōura for Please book your accommodation directly with them on the link below or telephone 03 319 5362. Top 10, Kaikoura Website Register [HERE](#) - It's sure to be another exciting SIRAG! Notes from Jason Canterbury's

[Find out more](#)



[Top 10 Holiday Park,](#)
34 Beach Road
Kaikōura, 7300 New Zealand
[+ Google Map](#)



Registration OPENING SOON

30
January
2026



2026 – National Rally/AGM, (South Island), Friday 30th January – Monday 2nd February 2026

Updated: 03/08/2025 BMWMC AGM Rally 2026 - Friday 30th January – Monday 2nd February 2026: Save the dates - more details and registration to follow nearer the event: Email any questions to agmrally@bmwmc.nz Accommodation - Please book directly: Harvest Hotel at the Gate Phone: 03 445 1777 Booking Code for Discount - #72266 AGM/National Rally:

[Find out more](#)



[Harvest Hotel, Cromwell,](#)
6 Barry Avenue
Cromwell, 9342 New Zealand
[+ Google Map](#)



We suggest booking the accommodation and Ferry crossings Now
Bluebridge discount has been extended but Interislander yet to extend beyond 2025.

SAVE 20% ON A HELITE VEST and who knows... it might save you!



HELITE
airbag technology expert

20% OFF

Helite Oceania Airbag offers BMW/MC NZ members a 20% discount on orders placed by 11th August 2025

50 years
Making Life a Ride!
BMW Motorcycle Club
of New Zealand
1975 - 2025

NAME:	
PHONE:	
EMAIL:	
BMW/MC Membership #:	
MAILING ADDRESS:	

Measurement

	A (Height):	cm	**To ensure the best fit, please provide your measurements and, if possible, a current neck to torso photo of yourself. The photo will be deleted after your purchase is completed.
	B (Shoulder):	cm	
	C (Chest):	cm	
	D (Torso):	cm	
	E (Waist):	cm	
	F (Hips):	cm	

Measure only with a T-Shirt on!

[Click here for the Fitting Guide](#)

Product Selection:	COLOUR	Size

Optional Extra

ITEM	QUANTITY	NOTES
SPARE CANISTER		One canister is included with each jacket purchased.
EXTRA LANYARD (Mechanical only)		One lanyard is included with each jacket purchased.
FORK SENSOR (Electrical Only)		Optional for Electrical airbags.

Helite Oceania is offering BMW/MC Club NZ members a 20% discount on their motorcycle airbag products (excluding shipping). This offer is limited to one per member and does not apply to accessories. Offer is valid for on orders placed by 11/08/2025. This is a bulk order, with all items to be placed together with the manufacturer. Once received (typically within 4-6 weeks), we will quickly ship your order directly to your door.

Helite extends offer until August 21.

Click the image for more details or to order

YES! Name badges are now available. Anyone wanting a new or replacement name badge can order from our website.



Marketplace - FOR SALE

To advertise, please email
newsletter@bmwmc.nz

Marketplace is a service for members of BMWMC, NZ.

Advertisements will be accepted from members, commercial traders and non-members when it is considered in our members' interest to do so. No charge is made for Marketplace advertising. The Editor and Executive reserve the right to reject or modify any advertisement considered inappropriate and take no responsibility for errors or omissions, the quality of items, claims made, or for any transactions that ensue.

Advertisements run for approx. 3 months from the date first published unless otherwise arranged with the Editor.



MRA Variotouring screen for BMW R1250RS with adjustable top deflector
Near new condition.

Used for only 2000km - \$220

Contact Bruce 021 453 653

bruce@eastbridge.co.nz



BMW Motorcycle Club
of New Zealand

1975 - 2025

SAVE
10%
ON ALL
PURCHASES
FOR A YEAR
TYRES, HELMETS, BOOTS, GOGGLES
JACKETS, DIRT GEAR, OILS, etc...

KIWIRIDER
SINCE 1984
SHOP



The store features New Zealand's best brands from all the leading suppliers and covers every part of Kiwi motorcycling; Road, Enduro, Adventure, Dirt, Touring, Sports, Classic, Commuter and so much more.

The first 500 members will go into the draw to win a Triumph 400, Street or Scrambler model (Worth \$8,995). Prize not redeemable for cash.

Benefits are you get a tee shirt (Road or Dirt), plus a mega 10% off all items in store for 12 months and a 12 month subscription to Kiwi Rider online magazine.

Hassle free buying, quality products from NZ's leading wholesalers, goods delivered to your door and all of this for only \$100 per year, do not delay, sign up today!

TO JOIN THE CLUB

FOR ONLY \$100

you get 10% discount for 12 months from our online store and your choice of tee*

PLUS

The first 500 members go into the draw to win a Triumph 400!

WORTH
\$8,995



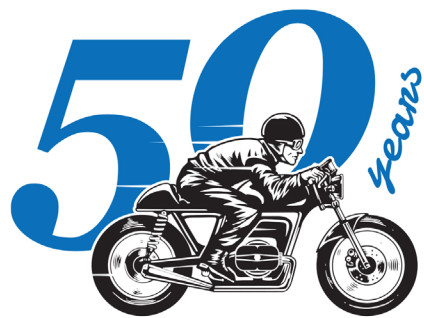
KIWIRIDER
SINCE 1984

ONLINE STORE

Quality accessories from
NZ's leading wholesalers

CLICK HERE TO JOIN THE CLUB

CREATING MOTORCYCLING MAGIC



BMW Motorcycle Club

New Zealand 1975 - 2025



BMW Motorcycle Club
New Zealand



Making Life a Ride!

As part of celebrating our 50th year.

Please, email (editor@bmwmc.nz) any photos old and new, (words a bonus but not essential) of any memory, event, ride, activity - any of which, helped make our Club's history.

There is a link in the covering email to upload any files. Any problems or if you require the link again, please email editor@bmwmc.nz

Thank you

BMW Motorcycle Club of Aotearoa New Zealand - Risk Management Plan

The BMW Motorcycle Club of Aotearoa New Zealand is an organisation whose members join together for rides to nominated venues and for other social occasions. The organiser nominates the destination and regrouping stages along the way, but otherwise has no influence upon the way that riders behave on the road. There is no element of organised competition in the rides.

Riding Code:

1. All Club members on Club rides shall do so as individuals responsible for their own safety and shall take into account the safety of others they encounter on the ride.
2. Club members are responsible for ensuring that their motorcycles are in a safe and legal condition, the minimum being to Warrant of Fitness standards.
3. Riders, Pillion and sidecar passengers where required, shall have as a minimum standard New Zealand Approved Motorcycle Helmets, and stout footwear, gloves and clothing that will be capable of protecting their body in the event of a mishap.

4. Club Members are to go to the aid of any others suffering a mishap.

5. Rider organisers shall nominate the destination for the ride as well as any regrouping locations or other stops. The organiser is not responsible for the other riders' behaviour or safety.

6. Riders shall ride at a speed and in a way that is comfortable for them. Do not ride outside your personal comfort envelope.

7. If a rider is unfamiliar with the route, they shall arrange to follow another rider who does know the way and who travels at a comfortable pace.

8. Riders who decide to travel as a group shall adopt a staggered riding formation such that there is an accepted following distance to the rider immediately in front. A reasonable following distance is indicated by a time of two seconds between riders for dry conditions and longer for inclement conditions and on loose surfaces.

9. The Ride Organiser and or the Club are not responsible for the participants' safety, and all participants participate at their own risk. All participants are aware that they are travelling on open public roads and are responsible for their own safety and compliance with the Road Rules and Laws.



Area Representatives



NORTHLAND

Ian Macartney
027 281 0242
northland@bmwmc.nz

AUCKLAND

Stephen Parkinson
021 989 092
auckland@bmwmc.nz

WAIKATO

Chris Townson
027 390 4239
waikato@bmwmc.nz

BAY OF PLENTY

Alan Belworthy
027 496 0748
bayofplenty@bmwmc.nz

TARANAKI

Wayne Higgins
027 506 6488
taranaki@bmwmc.nz

RANGITIKEI

Murray Petherick
027 433 6657
rangitikei@bmwmc.nz

EAST COAST

Alan Robinson
027 432 4503
eastcoast@bmwmc.nz

WAIRARAPA

Peter Tibbs (Aka Tibsy)
027 335 6843
wairarapa@bmwmc.nz

WELLINGTON

Denis Hulston
027 443 3604
wellington@bmwmc.nz

TOP OF THE SOUTH

Gretchen Holland
021 266 3867
topofthesouth@bmwmc.nz

CANTERBURY

Jason Batchelor
027 429 5905
canterbury@bmwmc.nz

SOUTHERN

Tharon Knoetze
021 034 1760
southern@bmwmc.nz