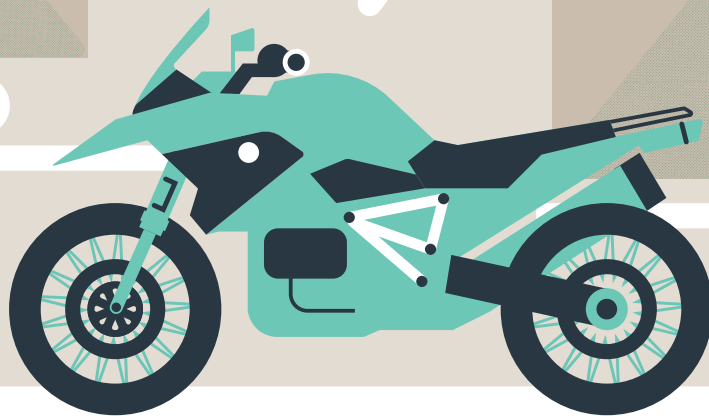


NEWSLETTER



I'll SHOW
YOU PARTS OF
THE WORLD
OTHERS' FEAR



Just like a BMW R1200, every motorcycle has a unique character. Which is why we design insurance that's anything but off-the-shelf. If you have a bike that helps you escape the ordinary, talk to us about customised insurance you won't find anywhere else.

Star Insure Morotcycle. It's the insurance your bike would choose.

ESCAPE THE
ORDINARY



0800 250 600



starinsure.co.nz

starinsure
Motorcycle

**EDITORIAL COPY TO:**Colin Gates
newsletter@bmwmc.nz**OTHER CORRESPONDENCE TO**The Secretary
BMWMCNZ
PO Box 109-245
Newmarket
Auckland 1149
New Zealand**PRESIDENT**Chris Souness
021 494 952
president@bmwmc.nz**VICE PRESIDENT**Stephen Parkinson
021 989 092
vicepresident@bmwmc.nz**SECRETARY**David Fish
021 927 901
secretary@bmwmc.nz**TREASURER**Colin Gates
027 9222 350
treasurer@bmwmc.nz**MEMBERSHIP SECRETARY**Barry Petherick
027 341 6949
membership@bmwmc.nz**AREA REP LIAISON**Ian Marcartney
027 281 0242
arl@bmwmc.nz**BMWMC GEAR**shop@bmwmc.nz**Thank you for your
feedback and stories**
feedback@bmwmc.nz**Contents**

- 3 [New Members \(below\)](#)
- 4 [President's Podium](#)
- 8 [Area Reports starts](#)
- 10 [Out in the Wops Wops](#)
- 26 [SIRAG pics](#)
- 28 [Graeme & Sue's Travels](#)
- 36 [AGM Rally - Registration](#)
- 43 [Area Representatives details](#)

Welcome to our New Members

We hope you'll take part in many of your local and national events. Your Area Rep will be pleased to introduce you to other members in your area. Our monthly newsletter is an open forum for all members. If you fancy a story and/or photos published about your ride, the rebuild of your bike, a book you might have read or a movie you have seen lately, or just want to get something off your chest about how the club is going, then please email/phone the Editor no later than the 2nd day of the month.

We look forward to your contributions.

A Very Warm Welcome to:

LEEANNE	COLE	PAEKAKIRIKI
COLIN	JOB	TAURANGA
GEORGE	KERSE	CHRISTCHURCH
YOUNG MI	KIM	NGAKAWAU
JANTJIE	NELL	ROLLESTON
DENNIS	PRENDERGAST	LOWER HUTT
RICK	RATCLIFF	DUNEDIN
LAURIE	ROSS	PAEKAKIRIKI
PETER	SMITH	RANGIORA
KEN	WILTSHIRE	NGAKAWAU

Please Note: Any material intended for publication in the newsletter should reach the Editor no later than the 2nd day of any month but the earlier the better. The Newsletter is an open forum for all members. Views expressed by members may not necessarily represent the views of BMWMC. Publication of all material is subject to the Editor's discretion. Photos are courtesy of article authors and/or usually credited when known, unless requested otherwise.

Cover picture: BMW**Photo by: Barry Petherick****Date: October 2023**



President's Podium

Chris Souness



BMW Motorcycle Club
Aotearoa New Zealand



December 2023

After not being able to make the GS Rally in Rotorua I was looking forward to making the trip south to the South Island Rag Rally in November.

We departed on the Ferry from Wellington and after some arduous riding, I think about 25K's to the Ferry and a similar distance to Picton where we parked up for the night. We had a wonderful meal at Oxley's Bar and Kitchen on Wellington St there so well worth a visit if you are passing through.

Up early for the trip south to Akaroa which after reviewing the weather forecast was to be a wet and windy one. Well, that was an understatement! We got caught in a southerly front that was working its way up the country and riding into the gusty wind and rain with the temperature down between 6-9 degrees it was a challenge. Riding with my adventure helmet with a peak didn't make it any easier as the wind was buffeting my head around constantly. Good exercise for the neck muscles I suppose.

The weather improved slightly as we made our way to the outskirts of Christchurch, so we decided to pop into Motomox in Kaiapoi to have a look at gear. I've been looking to upgrade my Rallye suit lately but suffering from long leg and arm syndrome means that finding suitable gear that fits hasn't been easy. Again, no luck so it seems I'm destined to keep my current gear for a little while longer.

After hitting peak hour traffic on the outskirts of Christchurch we ended up at the Top 10 in Akaroa later in the afternoon just in time to settle into our lodgings and then pop down to the local for dinner.

Up early the next morning the gravel gang headed off at 9:00. The weather was still a little sketchy so several of us decided to complete a circular route around the hilltops of Banks Peninsular ultimately to meet up with the others in Little River for lunch. Ralph had booked tables for us there and we all managed to assemble on outside tables and enjoy a catch-up, a few yarns and a great lunch. The groups parted ways again in the afternoon and everyone

Continued...





President's Podium

Chris Souness



BMW Motorcycle Club
New Zealand



December 2023

made it back to the Top 10 safe and sound for our BBQ dinner. The Canterbury team sorted this for us and put on a wonderful spread, BBQ meats and salads with dessert treats as well. A big thank you to Garry and Jo and their army of helpers for arranging this for us it was very much appreciated by all.

Back to the BBQ area early Sunday morning for a cooked Brekkie, again sorted by Garry and Jo and after saying our goodbyes it was back on the road to make our way home again.

I had booked a late ferry home that night so I rode directly to Picton and had a wonderful riding day with the others going north on SH1. The weather had cleared up and whilst it was still a little chilly the riding was excellent.

A BIG thank you to the Canterbury team and in particular Jo, Garry and Ralph who managed the finer details of the Rally for us as well as anyone else who was involved in the planning ahead of the weekend. It was another excellent trip away and the opportunity to catch up with friends and do what we enjoy doing together is priceless. I'm Looking forward to next year!

We are now in the final few weeks of preparation for the National Rally in January. Things are tracking along well. If you are keen to attend and you haven't already done so, book in by completing the registration form included in the newsletter and contact the Methven Resort directly to book your accommodation. It's going to be an exciting weekend packed with excellent riding and entertainment, so it would be great to see as many of you there as possible. We also have our AGM scheduled for early in the evening on Saturday night and this will be an excellent opportunity for members to get an update from myself and the rest of the board.

All the best for the festive season and whatever your plans are, stay safe and have fun with family and friends.



MCIVER & VEITCH

THE SOUTH'S AUTHORISED BMW MOTORRAD DEALER



ADVENTURE



HERITAGE



ROADSTER



TOUR



BMW Motorrad

ESTABLISHED
1932

112 CRAWFORD STREET, DUNEDIN / PH: 03 477 0236

www.mciverandveitch.co.nz

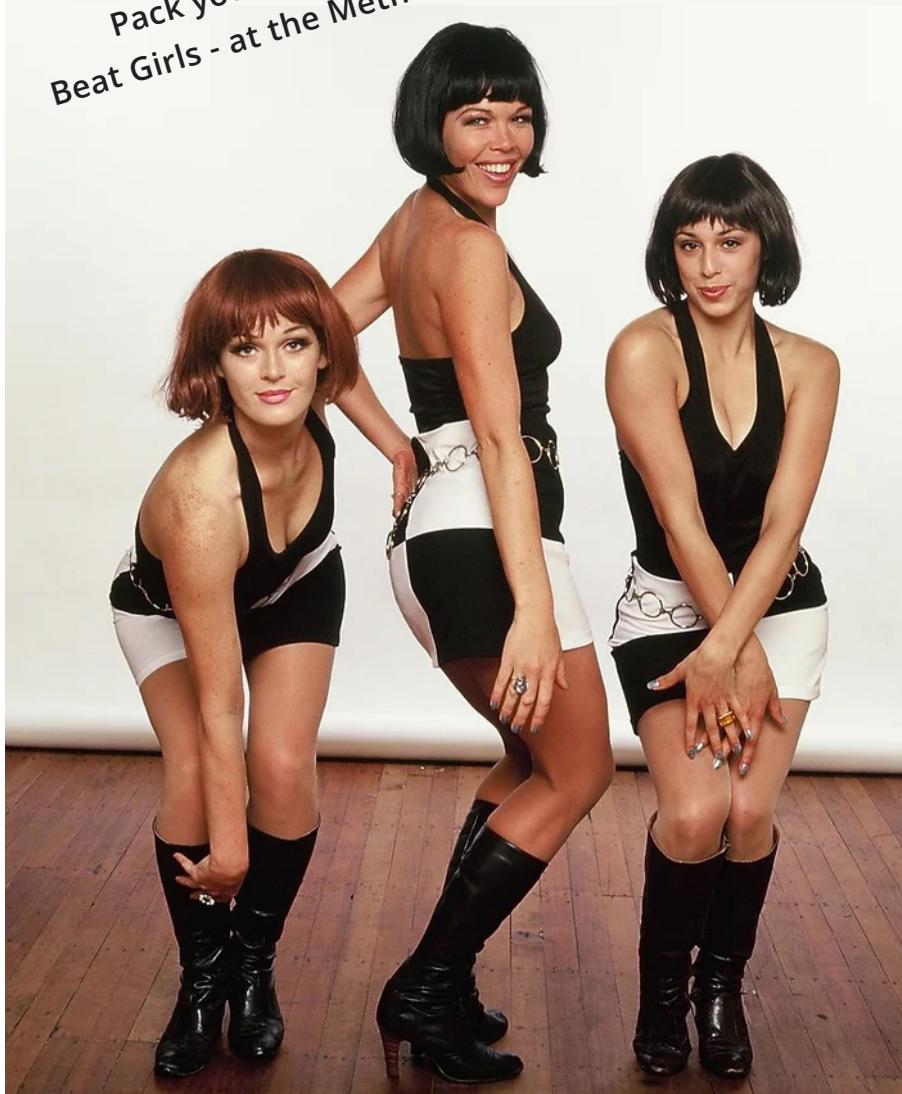
Registration is open!

Join us for the 2024 Annual Rally & AGM in Methven
Friday 19—Monday 22 January, 2024

Book your place now at [Events - BMWMC](#)



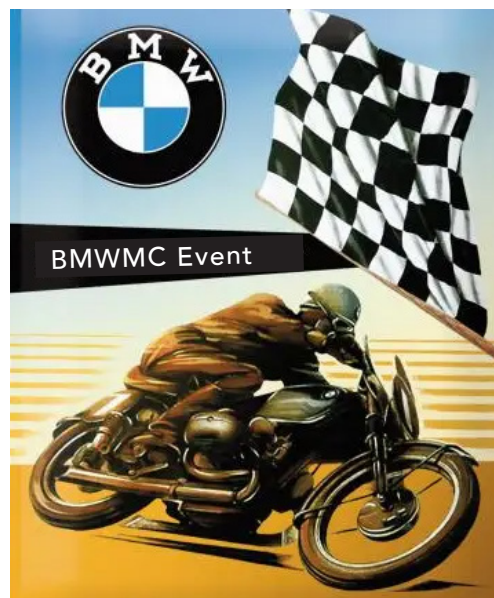
They're back!
Pack your boogie shoes for the
Beat Girls - at the Methven Annual Rally!



Please note:

- For those staying at the Resort, the accommodation rate includes a Continental Breakfast
- The rate has been negotiated to try and ensure we have exclusive use of the Resort for the weekend

Be sure to be there 😊



Area Report: Waikato

by Paul Quilter



Ride to Waihou Bay with the BOP Group - 12th November

We joined up with the ride to Waihou Bay that the BOP group organized on Sunday 12th Nov.

There were 4 riders from the Waikato that joined the 11 BOP riders.

Joy & I decided to go to Whakatane on Saturday, so left at 11am for a leisurely ride through the backroads to Atiamuri



and then the Waikite Valley for lunch at the Waiotapu pub before heading via Murupara to Whakatane.

The campground cabin was cosy and the short walk to town for dinner made this spot one that we noted for future use.

On the Sunday morning the weather was beautifully fine when we left for Opotiki. Our plan was to arrive early at the hot bread shop where the BOP riders would be arriving.

Matthew arrived on

his R1200RT and was followed by a larger contingent of assorted bikes as the BOP riders started to arrive.

Fresh back in NZ from his 20 weeks of travels in Europe was Graeme Duncan, so we had a brief opportunity to catch up and hear about some of their travels.

We always love riding up the coast from Opotiki as it has to be one of the most beautiful coastlines in the country. The bikes were flowing through the curves and the road condition was pretty good.

The stop at Waihou Bay afforded the opportunity to catch up with some members that we had not seen in a while, so it was great to catch up and hear all the news of their travels. There was a great line-up of bikes.

At 2pm the group made the move to head back, and we were soon passed by the faster BOP group riders whom we never saw again! We were following Joy who set a nice pace on her R9T. I did notice that her rear wheel hugger seemed to be



Area Report: Waikato

by Paul Quilter



flapping around a lot. Closer inspection when we got home revealed that the alloy casting had fractured and the plastic of the hugger was secured at just 1 point allowing it to pivot and scrape on the rear tyre. It is now removed and undergoing repair. I also noted that the rear tyre was due for replacement. Checking the records revealed that Joy has managed to get over 16,000km from this Metzeler Z8, so a smooth riding style really does pay off!

At our November dinner meeting in Cambridge on Nov 16th we had just 6 members present. A smaller turnout than usual due to some not being well, others being overseas and the rest no doubt just busy.

Paul #3711



BML
The Bike Maintenance Shop



Google Reviews
5.0 ★★★★★

BMW MOTORBIKES SERVICING & REPAIR

Specialising in servicing and repair of the BMW motorbike brand only. The BMW technicians waste no time when it comes to working on your motorbike repair and with no long booking delays, we will aim to have you back on the road sooner.

ACCIDENT REPAIRS

Being officially recognized The Bike Maintenance Shop can repair your BMW motorbike on behalf of all major insurance companies and their partners.



TYRE FITTING

We can take care of all of your tyre and tyre fitting requirements.

CALL US NOW **09 818 5448**

021 128 5546

contact@thebmshop.nz

Unit1, 2A Akatea Road, Glendene, Auckland

www.thebmshop.nz

Like us on
Facebook

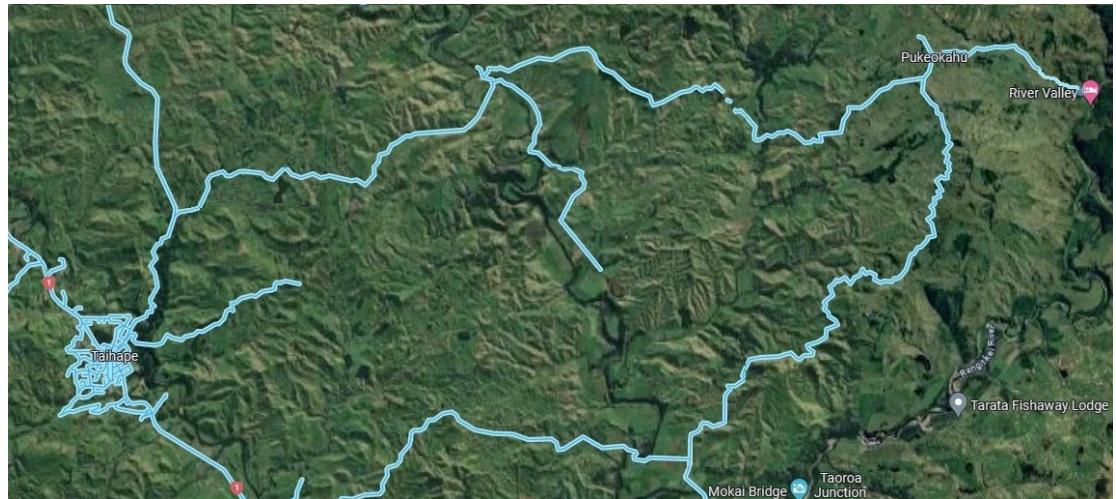
thebikemaintenanceshop

Out in the wop wops!

by Dave Morris



Recently on my Facebook page, a photo of the Rangitikei River popped up. It was the lodge at the very end of the Mangahoata Road. It looked interesting. I mused why not make it a destination? I checked it out on the web.



After a winter of bike registration on hold, I had it in mind to do a shake-down ride before the Annual Rally in Methven next January. This is to take 7 days and cover about 3,000 kilometres. I prepared a route for the River Valley ride with dates and accommodation, approached David O with the details and suggested a 3-day, "round-the-block" ride. "I'm in!" he replied.

We arranged to meet on the morning of the 12th to begin the adventure - "coffee stop at Sanson" I said, as I clipped down the visor and started our ride. As soon as we were on the motorway (SH1) we had a tail-wind which pushed us along with minimum engine effort. That was all well and good but after our coffee stop in Sanson, the breeze insidiously moved around to our right and became vexing. We went up through Fielding-Kimbolton and turned north at Mangaweka,

stopping for fuel and lunch at Taihape. From there the next 25 kilometres brought us to our River Valley Lodge. The best way to describe the direction is to go straight ahead at the Empire Hotel and head in the same direction as to Napier. Signs to the Lodge were well placed at all the turnoffs and intersections making it easy to find. The country was typically NZ farming and pleasant to ride. We had tar-seal roads right to the point of entering the private lodge grounds - and then we had gravel for approx. two kilometres. All was fine until the steep descent with two sharp U-bends just before the complex. Hmmm... I'm thinking, this will be exciting when we leave.

The thing that struck me first when I removed my helmet was the peacefulness of the area. The Rangitikei River was to our east and flowing south with an extremely high



cliff on the far side. We were warmly greeted and shown around before being taken to our room. From there we had a good view of the waterfall across the river.

After settling in and unpacking, I wandered over to the river and walked around the park-like surroundings. There were a large number of inflatables for the rapid-riders, many life jackets and related accoutrements. But what drew my attention were two stacked dories maybe five/six metres long; they're made on-site and used on the river.



The environment was very sheltered and relaxing; it was very quiet – apart from the birds. There was no traffic noise of course just the rapids quietly bubbling away.

We were two of three guests

staying there on Sunday night. We went to the bar at the end of the day and enjoyed the evening meal. There is no menu as such: when booking you note your preference of

meat. Also, there was no TV. I imagined reception was not available. We retired comparatively early and fell asleep to the gentle sound of the waterfall.

Next morning we prepared for the ride over the Taihape-Napier road. This caused some 'excitement' for me, as I made two mistakes; Operating a cold engine and choosing a wrong path up the road. David whizzed up past me and was out of sight. I stalled the engine and was not going to attempt to do a standing start on the gravel hill. With the bike weighing

230 plus two full large side bags and a bag on the back seat. My only other option was to slowly brake my way to the flat which took about 30 minutes. I paddled my bike backwards using only

the front brake fearing any faster would risk skidding and dropping the bike or even going over the bank.

Thankfully, the outcome was the host came out and offered to take the bags and myself to the top and Dave O rode my bike up. The experience was quite unnerving.

A break at Taihape to top up and catch a coffee. The wind was still with us and gusted for the whole trip. The road was in bad repair after storm Gabrielle and many bridges were close to being under-mined from high river levels. One-way and 30k speed restrictions were in place. We passed a couple of working parties on repair work. Coincidentally I was talking to a Downer manager at Waipawa and he knew all about the road. We were staying at Top 10 in Waipawa; it is so much more affordable than the twin cities we passed by. The down side - no eating places open on a Monday evening and we had to resort to supermarket choice. Maybe try Waipukurau next time (6-7 k's down the road.)

The wind was still with us for the last leg of the trip. There were three routes we could go and we finally decided to lunch at Woodville and make that decision then. We went over the Pahiatua Track and returned onto SH 1 whence we came up.

To summarize: Great place for an overnigher. Experienced confident riders only. (to navigate the road out. 😊)

Dave #1774

Area Report: East Coast

By John Wuts



Our last get-together before the Christmas function was held on 29 November at the Rasoi Indian restaurant on the Marine Parade in Napier. This restaurant boasts a very extensive menu; luckily, they also had a shorthand version. They are recommended if

you are visiting our sunny city.

Our Christmas function is planned for Sunday 10 December in the usual format of a shared plate and byo drinks at the residence of Bronwen and Peter Chang in Bay View.

John #1867



Tony, Walter, Stella, Maria, Pam, Carole and Robert.

ARCADIA MOTEL
CHRISTCHURCH
Comfortable, spacious affordable accommodation

FREEPHONE 0800 272 23 42
564 Ferry Road, Woolston, www.arcadiamotel.co.nz
Geoff Lester 027 285 1293

Area Report: Taranaki Tales

by Wayne Higgins



November's Ride



Unfortunately, I was unable to go on this month's ride due to a family illness. Special thanks to Gordon for leading the ride and Phil for taking photos.

It was a great turnout of around 12 bikes and is heartening to see so many turn up for the monthly rides, keep it up, team.

The ride was out to Whangamamōna via the Forgotten World Highway. It was a cracking day that included a good feed at the pub.

Gordon and a couple of others went home via Mt Damper Falls whilst the rest of the crew headed back the way they came.

Our next ride will be our end-of-year Xmas ride and lunch, looking forward to catching up with everyone then.



Wayne #4097



Area Report: Rangitikei Roundup

By Murray Petherick



Sunday Ride 12th of November



Super scooter!

With weather patterns beginning to look more conducive to riding (at least they were earlier in the month) it was planned to do a circuit that would take us via Whanganui to Field's Track and then on to Waiouru for lunch. From there the riders could select their own routes home to either Whanganui, Palmerston North or to Horowhenua.

The morning coffee meeting venue was the 'Behind the Door on 4' Café at Upokongaro, just up the river from Whanganui. Riders from southern and eastern areas gathered en-route at Sanson before heading on up to Upok. A little unexpectedly Neville came down from Whanganui to meet us there; one can only assume he

thought we might need a 'local' guide to help us find our way to Upok!

Seven bikes and eight bods headed on to Upok. where we met up with Peer, Barry H and Lance. After coffee and a catch-up, Lance headed back home to Whanganui and the rest of the group headed up SH4, the Parapara Road, towards Field's Track. Traffic was light and apart from the few areas of traffic light-controlled road works, which are an ongoing saga on SH4, the sunshine became more prevalent and the ride up the valley was very pleasant. Field's Track is a narrow, windy, sealed road with lots of blind corners, but is nonetheless a good ride when treated with appropriate respect. The group stopped

for a leg stretch at the Whangaehu River bridge before heading on towards Waiouru. After crossing the bridge the Whangaehu Valley Road widens out a bit and has the increased status of having a painted centreline! With the bonus of a clear blue sky, we had some good views of Mt Ruapehu as we headed out to SH49 and then on to the lunch stop at the Army Museum Café.

After the lunch break the Whanganui boys headed down SH1 to Hunterville and from there back to Whanganui via Fordell. Several others also headed down SH1, homewards, but Colin Petterson and yours truly took a slightly longer route from Mangaweka via Rangiwahia, Feilding and

Area Report: Rangitikei Roundup

By Murray Petherick



Opiki back to Levin. All in all, a good day out, despite a bit of cloud and wind at each end of the riding day, but generally good roads throughout and good weather conditions through the middle of the trip.

Rider Training School

The California Superbike School was again held at Manfeild in Feilding earlier this month. Unfortunately, the dates clashed with the SI RAG so those of us who have in recent times committed to marshalling at the School felt obliged to put that ahead of the RAG. Once again, a wide range of bikes and riding abilities were on display. There was a good mixture of race and road bikes but the most unusual/unexpected was a Kawasaki scooter. Although the bike and rider were seriously out-gunned by most of the other combinations the rider persisted through the two days of instruction that were available to him, and hopefully picked up some good skills and knowledge along the way.



Ruapehu



SH4 roadworks

Ride Forever Course

With the assistance of Peter Hookham of Rightway Driving Academy (Kapiti) a Gold Ride Forever Course was set up for six of our group members. The course was run on 25th November and with registrations being completed in October the usual \$50 registration was waived by ACC. The course was centred on Bulls, being reasonably central to our Area, and the participants had a useful, although somewhat cool and breezy, day of instruction. For the participants, the added bonus for attending the course is the discount/rebate on bike registration fees for the next couple of years.

Murray #2690



Whangaehu Bridge

Area Report: Wellington

By Denis Hulston



Club Social Meet & Eat 6th November

A good evening at the Petone Club, with sixteen attending. Denis & Annie, Martyn & Sue, Ian & Lynn, Brian, Cheryl & Dave, Dave & Julie, Bruce & Virginia, Peter & Jenny and Dave R. Good to see you recovered from that serious flu, Dave – better to be riding than hospitalized – go well.

New Member Welcomes

Welcome to new members Dennis Prendergast, Laurie Ross and Leanne Cole who joined us in November.

Club Rides November 2023

Sunday 5th November – Wairarapa backroad Gravel ride.

Thanks, Tibsy for organizing this ride and putting together such a good route.

Four Wellington riders, Stu, Chester, Philip and Denis left Remutaka at 8.15am for the ride over the Remutakas. Despite the reduced speed limits and road works almost all the way to Masterton, we were early to meet Wairarapa riders so had time for coffee and comfort stop before leaving Farriers at 10am. Wellington riders day ride was about 420km, of which about 170km would have been gravel. We met four Wairarapa riders

at Masterton and two more at Eketahuna – a group of ten riders all up.

The route explored roads east and west of Eketahuna and Pahiatua through to Bideford. We met only three vehicles on the gravel, which added to the enjoyment. There was some marbly newly laid gravel on a couple of the final sections, but no incidents. We did leave Chester behind – a reminder of an opportunity to improve our communications & corner man system.



Out of the gravel
Pahiatua coffee stop

Area Report: Wellington

By Denis Hulston



Sunday 12th November – Ride to Sanson, Ohingaiti, Kimbolton, Ashhurst, Shannon

Six riders, including one pillion – Denis & Annie, Keith T, Ian M, Stephen O & Geoff Louwman (from Christchurch) enjoyed a good day riding in fine weather.

Wellington riders met at BP Mana for a 9am departure to meet Stephen & Geoff at Paraparaumu, before riding for coffee and scones at The Woolshed, Shannon. We rode back roads through Halcombe to SH 54 for the ride to Vinegar Hill. From Stormy Point, we could see both Mountains - Ruapehu and Ngauruhoe. We continued north on SH1 to Otara Road for some beautiful winding and undulating riding through to Pemberton Junction and then on to Hansens Café for a late snack and coffee. Stephen and Jeff took advantage of the opportunity to ride some gravel – Ridge Road – while the other riders continued to Cheltenham, Ashhurst and refuelling at Shannon. We ran into gusty crosswinds on

Highway 57 on the way back to Wellington, but not gusty enough to dampen a great day's 435km riding.



Sunday 19th November

We had planned a local ride - Mangaroa, Whitemans Valley, Moonshine, Pauatahanui, Transmission Gully, and Paekakariki Hill backroads. However, the weather put paid to that.

Continued...

Area Report: Wellington

By Denis Hulston



Planning the next trip –
Hansens Café Kimbolton

What's Happening with BMW Motorcycle sales and service in Wellington?

Here's my take on the new arrangements for BMW motorcycles in Wellington. Changes are still underway. BMW website information is still exclusively oriented to BMW car sales. The Motomart website links to Cyclespot in Auckland. So, watch the developing space.

The BMW motorcycle dealership, led by Ian Shiner, will sit alongside Continental Cars BMW Wellington at 138 Hutt Road, Kaiwharawhara. Dealerships alongside BMW cars are consistent with BMW NZ's strategy to bring the BMW brand closer together. You can buy a new BMW motorcycle from the dealership in Kaiwharawhara. Any

bike warranty servicing will be done at Kaiwharawhara.

Motomart, which is currently being renovated will merge with Cyclespot Group and sell Ducati, Husquavana, Gasgas and Kawasaki. TSS has KTM and Indian. You won't be able to buy a Harley or a new BMW from Motomart. The sales, parts and service will still be provided by the staff you have come to know and love. Glenn will be the new principal manager.

Motomart has an opening day on Saturday 16th December so call in and check out the renovated premises and range of bikes and accessories. **Denis #3184**

Events Page -

[Click HERE](#)
for latest details



January 2024 -
Annual National Rally
South Island 19th-21st January 2024.



Registration and Details on
our website or [Clicking HERE](#)



Please, always check our [website](#) for the latest details.

Area Report: Top of the South/Te Taiuhu

by Peter Wood

Picnic lunch at Elaine Bay, Marlborough Sounds – 12th November



More photos next page

Ride leader & scribe – Peter Wood

This was Gretchen's ride but she pulled out to save the birds i.e. vermin trapping conference. So I lead the ride, well sort of. Nine riders meet at QE2 Drive for departure at 9.45am. Our first stop was at The Brick Oven café in Rai Valley for coffee and to meet up with the Marlborough riders of whom there were eight. Also at Rai were Nelson BMW members Dale, Odette, Revti and Hilary who were heading home after an overnigher in Okiwi Bay plus Rick and Trudi in their car heading home from Blenheim. After our coffee stop, 15 riders continued to Okiwi Bay stopping there for a regroup. From here 13 carried on to Elaine Bay for our picnic lunch at a very nice scenic reserve watching sting rays glide by in the shallow waters, no togs, or swimmers to be seen. It was a very warm sunny day but some gusty winds so no takers to continue to French Pass which was another option. Conversations were about what a great ride we had to get here, single lane sections from previous slips and traffic lights, who stops at red lights when riding in Thailand, the Philippines and China, who has the best roads, riding a Honda CT postie bike around the South Island doing 350km each day for a week, the upcoming TT2000 starting in Richmond in February 2024 doing 2000km in 48 hours. Then our ride back out for an Ice cream stop again at Rai Valley and home. I'm sure everyone had a great day and hope all got home safely.

Peter Wood #3460

Riders were: Peter W, Tony H, Rod W, Gary, Anja, William, Andy, Lew, Terry, Peter & Sacha, Ross, Irene & Peter, Lindsey, Colin, Wayne. Drop-ins – Dale & Odette, Revti, Hilary, Trudi & Rick



Area Report: Canterbury

by Ralph Moore



SI RAG RALLY RIDE 25th November

Saturday morning started out looking pretty grim for our tour of the outer bays of Banks Peninsula. Seventeen SIRAG riders plus some Christchurch boys over for the day lined up for the 9am start.

It was drizzling as we started from the camp in Akaroa heading up the hill towards the Summit Road where you can normally expect to gain some stunning views of the eastern bays and Akaroa Harbour. Not today! As we approached the Summit Road, we entered the mist that was shrouding the hills, and blocking our views. We soon dropped below the mist as we descended into Le Bons Bay for our first stop and a quick blat along the beach for some of us. I was the first casualty of the day...Riding into a soft patch of sand and getting bogged.

We climbed steeply up and away from Le Bons, and onto Lavericks Ridge.



Damp start at Akaroa



Bogged at Le Bons



Climbing out of Le Bons

Area Report: Canterbury

by Ralph Moore



We followed the narrow gravel stock route along Lavericks Ridge getting good views of the remote bays and farms below. Eventually dropping into Okains Bay for a breather. The day dried out and started to warm up as we continued on twisty sealed roads around through Chorlton and Little Akaloa and climbed up to the Summit Road which we followed for 10km to turn onto a stock route down into Pigeon Bay.



As we climbed out of Pigeon Bay, some riders decided to take a detour and check out Little Pigeon Bay, So the rest of us waited down at Port Levy for them to catch up again, then we all headed up Western Valley Road and over into Little River for our lunch stop at The Little River Cafe and Gallery. A few of our road riders met up with us here for lunch.



After a very enjoyable lunch, we headed uphill again onto Bossu Road with views of some of the southern bays. This brought us almost to the Akaroa Heads.



with a Nice line-up of BMWs

Continued...

Area Report: Canterbury

by Ralph Moore



We wound around Wainui and the western bays of the Harbour, stopping at Onawe Peninsula for a history lesson.

Then it was a short ride around to our camp in time to have a quick change before our evening kicked off with a BBQ, Thanks to our Chefs Garry and Jo for a super BBQ in the sunshine.

Ralph #3082



ANCHOR INN MOTEL KAIKOURA

**BOOKINGS
ESSENTIAL
BOOK ONLINE**

KAIKOURA'S SUPERB WATERFRONT LOCATION

WELL APPOINTED **FAMILY APARTMENTS** - One Bedroom Garden View (Sleeps 4); Two Bedroom Ocean View (Sleeps 4)

STUDIOS (Sleeps up to 2)
Executive Ocean View with Spa; Superb Ocean View; Standard Garden View

Reservations Freephone 0800 72 00 33

208 Esplanade, Kaikoura | Ph: (03) 319 5426 | Email: info@anchorinn.co.nz
www.anchorinn.co.nz

The Anchor Inn Motel is owned and run BMW Club member Paul Meikle #3311



Must check the expiry date
on my membership card
with BMWMC

Expiry date looms and don't

membership@bmwmc.nz



BMWMC

Remember to write a note
about my travels and
email it to

editor@bmwmc.nz



Motorcycle Rego Cashback programme

Great news! We have extended the programme until 30 June 2025. We offer experienced riders, who are eligible, \$200 Cashback on their motorcycle rego.



SIRAG Report:

Words and Pictures by Ian Macartney



SIRAG 23 Akaroa done and dusted, home after 2,620km. Excellent weekend with some interesting mixed weather at times. Heading into summer the roadworks, cones & stop/go were in full swing everywhere. Enjoyed the rides with Club members.



Big Thanks to Garry & Jo for an excellent Sat night BBQ & Sun breakfast, and our Area Rep Ralph for sorting rides. It looked like everybody had a brilliant day & the lunch at Little River Cafe was excellent.



The Friday ride from Picton to Akaroa was challenging at times, straight into a cold Southerly front with 90km winds and cold heavy rain. Think we were all pretty battered and enjoyed the beer and Blue Cod in the Pub that night.



Our Sun ride to Picton was epic, blue skies, and snow-capped mountains along the Kaikoura coast - stunning. Picton as always, is a top

SIRAG Report:

Words and Pictures by Ian Macartney



spot, stayed at the Gateway Motel southbound & High St Motel northbound and ate at the Oxley Hotel (fresh mussels in curry and lime sauce)

Discovered a few new Cafes - The Store at Kekerengu, The Office at Waikuku ;

La Bull Cafe (used to be Mother Goose) on the main intersection in Bulls. Also, the Glorious Cafe in Ngatea is worth a stop.

Bluebridge sailings are a breeze and very bike-friendly.

I appreciated my cruise control keeping me where I should be as Mr Plod was everywhere. The multitude of speed limits in many areas didn't make a lot of sense and 80km/hr from Little River to Christchurch on open country roads beggars' belief. My Nav VI performed faultlessly.

Look forward to the Methven Rally in January.

Ian #3190



Member's Story - Travel, continues...

Graeme & Sue Duncan



Due to Schengen Visa requirements, we could only stay in Europe for 90 days. This gave us only a couple of weeks to spend getting back to the UK and we had a couple of people to visit in Germany so that is where we headed. Our first stop was Hamburg for 2 nights in a home exchange. It was perfectly positioned to explore so we utilised the Hop-on Hop-Off bus and Harbour cruise to see as much as possible in a short time. We did not realise just how many waterways and canals run through this city and historically how so much trade and commerce were based around these. A beautiful city though with lovely buildings. Our intention to leave Hamburg on a Saturday gave us one of our funniest and most embarrassing memories from the trip. We use the "scenic" app for routes and frequently these will take us via unusual and out-of-the-way routes. This Saturday it took us via the industrial area to get out of the city. We found an unmanned fuel station hidden away amongst manufacturing buildings and no one around. We had become somewhat complacent on our travels so at the pump Graeme began to fill up with the hose with a green handle, as we always did. At some point, we noticed it was HVO but didn't know what that was and the diesel was separate with a black handle. That was the point we should have done some research, but we didn't. So we left the fuel stop and the bike ran for maybe 30secs then stopped. The short version is that we eventually found out it was Hydrotreated Vegetable Oil...or synthetic diesel! It was also the only fuel stop in Hamburg that dispensed it, and it had only been there a couple of weeks! We did manage to get enough help to drain the fuel out and refill correctly, but it still wouldn't go. We ended up being at the fuel stop for 7 hours during which we hardly saw a soul, we tried several times to get help from the equivalent of AA

but because we had no phone number, only data connectivity, they cancelled our jobs, or hung up due to language barriers. The nearest bike shop didn't want a bar of us because we didn't have a triumph and then they all shut. I managed to score some water so we could have lunch and a cuppa and had figured out a place to put the tent up if needed. Eventually, a lovely couple turned up and arranged for a company called "Wrong Fuel" to attend, and then stayed with us until our bike was sorted. In the end, it took 10 minutes to get sorted and we were on our way again. Big lesson learnt.



We arrived at our next accommodation at 10 pm but were at another home exchange in a little beach village on the Baltic Sea, so got to chill for a couple of days. Beautiful weather and a beach where 75% of the beachgoers were naked. We took a day trip up to Rugen Island, a very popular summer holiday area and a lovely mix of farmland, National Park, Woods, and beaches. From here we travelled right down through Germany ending up in Lorrach on the border with France and Switzerland. Our friends work for Roche so we got a tour of their factory and campus in Basel. Huge and very flash, no wonder drugs cost so much!

Cont...



We spent a day riding in the Black Forest which was lovely despite the rain.



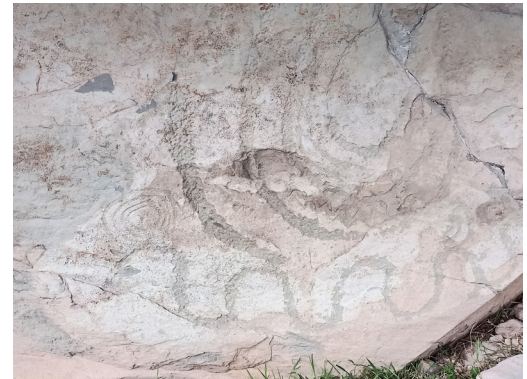
Interesting fact...In Germany, most trucks cannot travel on the motorways between Sat 6pm and Sun 6pm and if it is school holidays they cannot go on them the whole weekend. While travelling you see the roadside rest areas full of trucks, one even had a washing line strung across under his bonnet. Then we hightailed it back to the UK stopping briefly in Le Quesnoy which is the sister City to Cambridge and also where there is a Memorial to the NZ soldiers who liberated Le Quesnoy in WW2.



The last part of our trip was nearly a month of riding in Ireland. We crossed over from Fishguard in Wales to Rosslare. Headed to Navan near Dublin and spent a few days exploring the area including a day in Dublin, toured the Guinness factory/museum, visited old churches and castles and explored the ancient Passage Tombs which are over 5,000 yrs old and have exceptional displays of megalithic art on the rocks around the base of the mounds.



These are incredible engineering feats with alignments and distance the rocks have been brought.



Then up Belfast for a few days visiting the areas of "the Troubles", Crumlin jail and the Titanic Museum.



Heading north we travelled the

Cont...



Causeway Coastal route where we visited the Carrick-a-Rede rope bridge then on to

Head the northernmost point of Ireland and to Mizen Head the southernmost point.



In between we saw peat bogs (17% of Ireland is peat bog and still actively used for heating fuel), famine museums, magnificent cliffs, beautiful beaches, mountains bare of any green, woods, skinny windy roads and drank "poitin" which just about blows your head off.

the Giant's Causeway. This massive area of Basalt columns is said in legend to be a pathway from Ireland to Scotland built by giants as there is a similar area in Scotland. We continued to The Wild Atlantic Way. This coastal route runs from Derry in the north, right down the West coast to Kinsale in the South. If you drive directly between these points, it is 452 km and would take about 6.5 hrs. The Wild Atlantic Way is a 2600km route and we rode most of it. We went up to Malin



We rode the Gap of Mamore, circumnavigated Achill Island, Doolough Valley, Killary Fjord (the only fjord in Ireland),



visited the Carrowmore Megalithic Cemetery, older than the passage tombs and thought to be 7000yrs old and from when humans first began to settle and farm instead of being nomadic, toured a lead and silver mine, Ailwee Cave with bear bones about 10,000yrs old and hibernation pits. These bears are now extinct. We saw the Cliffs of Moher(expensive and full of tourists)



and Bromore Cliffs (very cheap and no one except us there), spent the evening in a pub



called Buggles about as big as our bathroom, listening to local musicians having their weekly "session" playing Irish music, rode Conor Pass and the Dingle Loop with no wiggle room on the road, Ring of Kerry , Ring of Skellig and Gap of Dunloe, apart of which was a narrow twin track gravel road through the mountains...brilliant!



In another storm we finished the Atlantic route and crossed the bottom of Ireland visiting the Waterford Crystal factory, the process of

designing and producing this beautiful crystal is really



interesting. Our ferry back to Wales was delayed because of the storm but was a nice crossing when we got there. Into Wales, we rode up through

slate mining country and did the Rheidol Railway to Devils Bridge as we were fed up with riding in the rain. Devils Bridge is 3 bridges made in the 11th century, then 1753 and then 1901, stacked on top of each other.





The waterfall underneath is a mass of nice round cauldrons that the water has eroded. Rivers everywhere were in flood as was a lot of the farmland, which made the waterfalls great. Our last fun ride day in Snowdonia turned quite challenging as we hit a twin track through a farm. It got very steep, very narrow, and very slippery. When we nearly fell into the rock wall I got off and walked the worst.



The last few days of riding were really about getting us back to our start point and then packing everything up. The bike has been bedded down in the haybarn again. So 4 months of riding, 24,000km altogether, no flat tyres, maybe 10 days where we were not on the bike at all, 72 hrs total where we weren't in each other's company, and we are

still married and aiming to head back 2025. Now... we just have to build a new house before then.



Graeme and Sue

PS. The Wild Atlantic Way is a fantastic piece of road. Campsites are almost non-existent and certainly no cabins anywhere. You can wildcamp. Due to the weather, we used B&B's and hotels, not booked till about 3pm each day so we knew where we were going to be. We usually had no issues with finding reasonably priced (for Ireland) places to stay. We would highly recommend riding some or all of the Wild Atlantic Way, you get everything scenery-wise, the people are wonderful and while often way worse than our roads, the roads are great fun to ride.

Sue and Graeme #3456 / 3088



NATIONAL ANNUAL RALLY

YOU WON'T WANT TO MISS IT!



BMW Motorcycle Club
Aotearoa New Zealand



REGISTER ONLINE +
BOOK DIRECT FOR ACCOMODATION
CONTINENTAL BREAKFAST INC.

DOORS OPEN FRIDAY 2PM

JANUARY
19TH-22ND

METHVEN RESORT
51 MAIN STREET
METHVEN 7730

www.methvenresort.com / (03) 302 8724



The Canterbury Team

Is looking forward to welcoming those attending the
Annual Rally in Methven 19th - 22nd January 2024.



Registration will be open from 2 pm on Friday 19th January just off the foyer in the Methven Resort leaving plenty of time to settle in ready to meet and greet over tapas and a glass or two from 5 pm. Those wishing for a more substantial dinner have plenty of choice in the township, details of places will be in your registration packs.

Saturday will start with judging bikes that respective owners want to present in the Concours d'Elegance. After that, the day's riding commences to have everyone back in time for the AGM at 5:00 pm. Dinner will follow and.... back by popular demand, the fabulous Beat Girls will cover musical hits from different eras, with appropriate dance moves, glamorous costumes, and slyly racy banter between songs. If you were at the Hanmer Springs Rally in 2016, you'll know how much fun that's going to be!

Sunday, for those not too exhausted from the previous evening, we start with a Gymkhana set up by a couple of members who just happen to be local NZ Police motorcyclists (so expect a bit of a challenge this year!). The Gymkhana is followed by shorter rides with a return to base for dinner and prizegiving.

Over the weekend, road riders will have a choice of self-guided routes where they can team up to undertake or ride individually, making the most of the glorious scenery on offer from the tarmac. For the more adventurous, there are guided routes that include some of our best high-country stations specifically put together so that anyone riding a GS variant, even with a pillion, will be able to complete without too much drama. These are Adventure Rides, so will include everything from tarmac, loose gravel, hard-packed farm trails, grass, and pretty much everything else in between. You may also come across loose stock, potholes, sharp corners, and reasonable drop offs but, if you ride to the conditions and to your ability, you'll be fine. Experienced riders are on hand to help novice riders as much as possible. With the variables of weather, closed roads, running out of time, etc., be prepared that we may not stick to the outlined route. Along the way, you will get to see some great scenery, meet new people, and hopefully gain some insights into adventure riding and the capability of your bike.

And those not riding - you're not forgotten... read on:



The Canterbury Team

Is looking forward to welcoming those attending the
Annual Rally in Methven 19th - 22nd January 2024.

For anyone not riding on Saturday or Sunday, Jo is pulling together two or three theme-based itineraries for things to do and places to go in the Methven and Mid Canterbury regions. It would appreciate some early feedback from you on the sort of things you are interested in so she can plan with the inter-town taxi van service and business operators.

Here are some possibilities:

- Arts and crafts
- Pamper and spa
- Technology e.g., vehicle collections, aircraft museum
- Shop 'til you drop e.g., local stores in Methven, a trip to Ashburton, farmers' markets
- Walks, gardens, and recreation areas
- Environmental restoration field trip e.g., wetland and catchment restoration
- Local history and buildings
- Hot air ballooning
- Foodie trip
- Anything else??

Please call Jo on 027 241 0611 or email her at Jo.buckner@bmwmc.nz as soon as you can to let her know what you are interested in doing.

We're looking forward to seeing everyone in Methven - it's going to be a cracker weekend for all.

Garry Williams & Jo Buckner



BMW Motorrad
100th Anniversary



BMW Motorcycle Club NZ

Methven Resort - 51 Main Street, Methven 7730

NATIONAL ANNUAL RALLY

Friday 19 January - Sunday 21 January 2024



BMW Motorcycle Club
Aotearoa New Zealand



Name 1		Membership Number	
Name 2		Membership Number	
Address			Post Code
Mobile:			
Email			

	Cost pp	Number of people	Total
Registration	\$65.00		\$0.00
Surcharge for Non Club Members – per person	\$40.00		\$0.00
Friday Night 'Meet & Greet' – per person	\$25.00		\$0.00
Saturday Night Dinner per person	\$59.00		\$0.00
Sunday Night Dinner per person	\$49.00		\$0.00
Rally Polo Shirts Orders must be received by 30 November 2024 Mens S M L XL 2XL 3XL 5XL (half chest size) 52 55 58 62 65 71 79 (cms) Womens 8 10 12 14 16 18 20 22 24 46.5 49 51.5 54 56.5 59 62 65 68 (cms)	\$55.00	# Men Size # Women Size	\$0.00

<p>TOTAL PAYMENT FOR THIS RALLY Payment to BMWMC's Account 03-1519-0034447-00 Bank Payment: Particulars: Surname / <u>CODE: AGM2024</u> / Ref. Mobile or Member # OR REGISTER & PAY ONLINE</p>	 <p>\$0.00</p>
-----------------------------------------------------------------------------------------------------------------------------------------------------------------------------------------------------------------------------------------------------------	--------------------------

HOTEL SPECIAL	<p>Room Rate - \$140.00 per night Book Directly: methven2024@bmwmc.nz or Tel. 03-302 8724 If single, please note on booking your willingness to share a room.</p>
----------------------	--------------------------------------------------------------------------------------------------------------------------------------------------------------------------------------------------

Special Dietary Requirements:

Please email All Completed Registration Forms or Questions to: agmrally@bmwmc.nz
 All registration forms will be acknowledged.

Disclaimer: This rally will be run under the BMW Motorcycle Club Aotearoa New Zealand (Inc) Risk Management Plan as published in the Club's Official Monthly Newsletter. By registering for this event, participants agree to abide by all its conditions



Expert Care for Your BMW Ride

At **NZBike**, excellence in motorcycle service isn't just a promise; it's our passion. Entrust your BMW to our certified Motorcycle Engineering expert and experience unparalleled care.

Your One-Stop BMW Motorcycle Hub

Professional Workshop Services

Our Christchurch workshop is a beacon for BMW enthusiasts. Our BMW-trained technician ensures your motorcycle receives the best care, from routine maintenance to advanced repairs.

Premium Online Shopping Experience

Dive into our extensive selection of motorcycle accessories and parts at NZBike.co.nz. Renowned for having the best tyre range in South Island, we ensure a smooth experience, delivering your needs swiftly across New Zealand.



Exclusive HEX Innovate Distributor

As NZ's sole distributor of HEX Innovate, we offer the sophisticated HEXGS911 and ezCAN, specifically designed for BMW motorcycles. Elevate your ride with these top-notch accessories.



TOURING AROUND NZ? WE ARE CONVENIENTLY LOCATED JUST OFF SH1

FIND US AT 21A Sheffield Crescent, Burnside, Christchurch

PHONE
[03-366-3000](tel:03-366-3000)

EMAIL US
workshop@nzbike.co.nz
info@nzbike.co.nz

FOLLOW US
facebook.com/nzbike.co.nz
instagram.com/nzbikeshop/

BMW Motorcycle Club of Aotearoa New Zealand - Risk Management Plan

The BMW Motorcycle Club of Aotearoa New Zealand is an organisation whose members join together for rides to nominated venues and for other social occasions. The organiser nominates the destination and regrouping stages along the way, but otherwise has no influence upon the way that riders behave on the road. There is no element of organised competition in the rides.

Riding Code:

1. All Club members on Club rides shall do so as individuals responsible for their own safety and shall take into account the safety of others they encounter on the ride.
2. Club members are responsible for ensuring that their motorcycles are in a safe and legal condition, the minimum being to Warrant of Fitness standards.
3. Riders, Pillions and sidecar passengers where required, shall have as a minimum standard New Zealand Approved Motorcycle Helmets, and stout footwear, gloves and clothing that will be capable of protecting their body in the event of a mishap.

4. Club Members are to go to the aid of any others suffering a mishap.
5. Rider organisers shall nominate the destination for the ride as well as any regrouping locations or other stops. The organiser is not responsible for the other riders' behaviour or safety.
6. Riders shall ride at a speed and in a way that is comfortable for them. Do not ride outside your personal comfort envelope.
7. If a rider is unfamiliar with the route, they shall arrange to follow another rider who does know the way and who travels at a comfortable pace.
8. Riders who decide to travel as a group shall adopt a staggered riding formation such that there is an accepted following distance to the rider immediately in front. A reasonable following distance is indicated by a time of two seconds between riders for dry conditions and longer for inclement conditions and on loose surfaces.
9. The Ride Organiser and or the Club are not responsible for the participants' safety, and all participants participate at their own risk. All participants are aware that they are travelling on open public roads and are responsible for their own safety and compliance with the Road Rules and Laws.



The advertisement for Arcadia Motel Christchurch features a large photo of the motel building with a sign that reads "ARCADIA MOTEL CHRISTCHURCH Comfortable, spacious affordable accommodation". To the right, there are three smaller inset photos showing the interior of a room, including a bed with a red coverlet, a living area with a blue sofa, and an outdoor area with a car parked.

FREEPHONE 0800 272 23 42

564 Ferry Road, Woolston, www.arcadiamotel.co.nz

Geoff Lester 027 285 1293

Marketplace is a service for members of BMWMC, NZ.

Advertisements will be accepted from members, commercial traders and non-members when it is considered in our members' interest to do so. No charge is made for Marketplace advertising. The Editor and Executive reserve the right to reject or modify any advertisement considered inappropriate and take no responsibility for errors or omissions, the quality of items, claims made, or for any transactions that ensue.

Advertisements run for approx. 3months from the date first published unless otherwise arranged with the Editor.

WANTED:

A BMW F700GS low seat.

If you have or know of one, please contact:

Jo

intouch@gregandjo.com

021 161 0615

WANTED: A Shout-Out for:

Rod Witte is organising a BMW display at the Nelson Classic Bike Show, 6/7 January to mark 100 years of BMW. His goal is to showcase the important early models and the designs influenced by Hans Muth (the designer who conceived two entirely new and novel classes of bike - the sports tourer (RS) and offroad/street (GS)).

Rod is looking for an early R80 G/S to display (preferably 1981/82 but up to 1987 would do. They became a GS (no slash) from 1988 and the design changed from Muth's original.

Muth also designed the 1981-84 R65LS with its wedge shaped bikini fairing...

If you can help please email Rod on rodngairewritte@hotmail.com

Notice of AGM 2024

The 2024 Annual General Meeting of BMW Motorcycle Club of Aotearoa New Zealand (Inc.) will be held at **5:00 pm on Saturday 20th January 2024** at the Methven Resort, situated at 51 Main Street, Methven

Any Member of BMWMC intending to bring forward a subject for discussion or to move a resolution at the AGM must give notice in writing to the Secretary on or prior to 5.00pm on Monday 1st January 2024. The Secretary will accept notices as a document attached to email at secretary@bmwmc.nz

Notices must specify the subject or set out the resolution to be moved in accordance with clause 9.1.5 of the club's constitution and must be dated and signed by the mover and seconder, both of whom must be members of BMWMC. Any subject of discussion or notice of resolution submitted after Monday the 1st of January 2024 will not be accepted.

The final agenda for the Annual General Meeting, including any notices of motion received from any Members, will be sent electronically or by post to all members at their last known place of address and posted on the Club website fourteen days prior to the meeting.

The positions of Vice President, Treasurer, Membership and Area Rep Liaison were re-elected for a two-year period at the 2023 AGM.

The following positions are open for election at this AGM

- President - incumbent Chris Souness, who is willing to serve another term
- Secretary - incumbent David Fish, who is willing to serve another term

These positions are open for any other member to be nominated if they so wish.

The Board would encourage anyone who wishes to be involved, to have themselves submitted for nomination to any of the available positions.

In accordance with the BMWMC Constitution, each elected position is for a two-year period. The Nomination Form is available by clicking [HERE](#)

Nominations must be by a current financial member and endorsed by the nominee. Nominations must be published in the final Newsletter before the AGM, and as such must be received by the Secretary no later than 5:00pm on 15th December 2023.

Notice of AGM 2024

Nominations may be received at the annual general meeting provided that no member can be elected who has not consented to be nominated.

Final Notice of our AGM will be sent out on Saturday 6th January and will include details of the business at hand that includes:

- o Minutes of the previous meeting,
- o Annual report from the Board,
- o Financial statements for the financial year, including income and expenditure, balance sheet for the past year and the estimate of income and expenditure for the current year,
- o Election of Officers
- o Any remits, notice of motion or anything to be included as business beyond that prescribed above that the Secretary has received prior to the 20th day before the AGM (which is Sunday 31st December 2023)

Important Dates:

Nominations for Board Members	Friday 15th December 2023
Final Date for Newsletter publication	Thursday 22nd December 2023
Subject for Discussion / Remit	5.00pm Sunday 31st December 2023
Final Agenda for AGM	Saturday 6th January 2024
Annual General Meeting:	Saturday 20th January 2024



BMW Motorcycle Club
Aotearoa New Zealand



AGM 2024 - NOMINATION FOR ELECTION TO OFFICE

1. Details of the Member making the nomination

Name: Membership Number:

Address:

SignatureDate:

2. Details of persons nominated

Name: Membership Number:

Address:

I nominate the above Nominee for the Board Position of:

(Write the Board Position in the box below)

3. Nominee Acceptance

I acknowledge and accept the nomination shown above.

SignatureDate:

4. Constitutional Requirement

7.2.1 Each year the members of the Club eligible to vote shall, by ballot, elect the President, the Vice-President, the Secretary, the Treasurer, the Membership Secretary and the Members' Representative. Nominations shall be by way of written nomination signed by a current financial member and endorsed with the consent of the nominee. Nominations must be received by the secretary to enable publication in the last newsletter distributed before the day fixed for the Annual General Meeting. Nominations may be received at the annual general meeting provided that no member can be elected who has not consented to be nominated.

5. Nomination Delivery Options

Either

- **Post the physical form** to The Secretary, BMWMC, Post Box 109-245, Newmarket, AUCKLAND 1149, (Allow 10 working days from posting for mail to be received by the Secretary). **Or, preferably**
- **Scan and email** the completed form to secretary@bmwmc.nz

Nomination forms **MUST** be received by **Friday 15 December 2023** so that all candidate details can be sent out to all members with the formal notification of the Annual General Meeting. Nominations made after 15th December 2023 can only be presented prior to the start of the AGM and will NOT be published.



Area Representatives



NORTHLAND

Ian Macartney
027 281 0242
northland@bmwmc.nz

AUCKLAND

Stephen Parkinson
021 989 092
auckland@bmwmc.nz

WAIKATO

Paul Quilter
07 859 2512
waikato@bmwmc.nz

BAY OF PLENTY

Alan Belworthy
027 496 0748
bayofplenty@bmwmc.nz

TARANAKI

Wayne Higgins
027 506 6488
taranaki@bmwmc.nz

RANGITIKEI

Murray Petherick
027 433 6657
rangitikei@bmwmc.nz

EAST COAST

please contact
027 281 0242
eastcoast@bmwmc.nz

WAIRARAPA

Peter Tibbs (Aka Tibsy)
027 335 6843
wairarapa@bmwmc.nz

WELLINGTON

Denis Hulston
027 443 3604
wellington@bmwmc.nz

TOP OF THE SOUTH

Peter Brandon
021 842 291
topofthesouth@bmwmc.nz

CANTERBURY

Ralph Moore
027 284 7508
canterbury@bmwmc.nz

SOUTHERN

Tharon Knoetze
021 034 1760
southern@bmwmc.nz