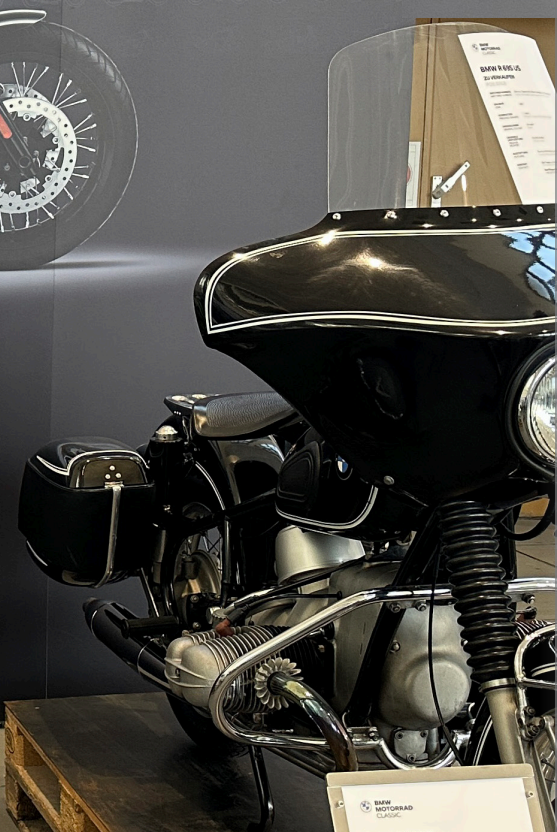




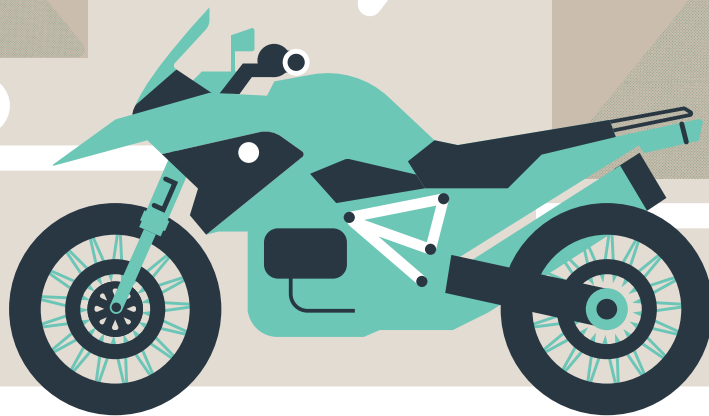
NEWSLETTER



**BMW Motorrad celebrates
100 Years! Chris Souness &
Ian Macartney attend.**



I'll SHOW
YOU PARTS OF
THE WORLD
OTHERS FEAR



Just like a BMW R1200, every motorcycle has a unique character. Which is why we design insurance that's anything but off-the-shelf. If you have a bike that helps you escape the ordinary, talk to us about customised insurance you won't find anywhere else.

Star Insure Morotcycle. It's the insurance your bike would choose.

ESCAPE THE
ORDINARY



0800 250 600



starinsure.co.nz

starinsure
Motorcycle



EDITORIAL COPY TO:

Colin Gates
newsletter@bmwmc.nz

OTHER CORRESPONDENCE TO

The Secretary
BMWMCNZ
PO Box 109-245
Newmarket
Auckland 1149
New Zealand

PRESIDENT

Chris Souness
021 494 952
president@bmwmc.nz

VICE PRESIDENT

Stephen Parkinson
021 989 092
vicepresident@bmwmc.nz

SECRETARY

David Fish
021 927 901
secretary@bmwmc.nz

TREASURER

Colin Gates
027 9222 350
treasurer@bmwmc.nz

MEMBERSHIP SECRETARY

Barry Petherick
027 341 6949
membership@bmwmc.nz

AREA REP LIAISON

Ian Marcartney
027 281 0242
arl@bmwmc.nz

BMWMC GEAR

shop@bmwmc.nz

**Thank you for your
feedback and stories**
feedback@bmwmc.nz

Contents

- 3 [New Members \(below\)](#)
- 5 [President's Podium](#)
- 6 [Area Reports starts](#)
- 21 [Chris Souness's trip to Berlin with BMW](#)
- 30 [Graeme & Sue's travels](#)
- 35 [For Sale and Wanted](#)
- 36 [Area Representatives contact details](#)

Welcome to our New Members

We hope you'll take part in many of your local and national events. Your Area Rep will be pleased to introduce you to other members in your area. Our monthly newsletter is an open forum for all members. If you fancy a story and/or photos published about your ride, the rebuild of your bike, a book you might have read or a movie you have seen lately, or just want to get something off your chest about how the club is going, then please email/phone the Editor no later than the 2nd day of the month.

We look forward to your contributions.

A Very Warm Welcome to:

Andre	OPPERMAN	WAIKANAE
Dave	REYNOLDS	NELSON

Please Note: Any material intended for publication in the newsletter should reach the Editor no later than the 2nd day of any month but the earlier the better. The Newsletter is an open forum for all members. Views expressed by members may not necessarily represent the views of BMWMC. Publication of all material is subject to the Editor's discretion. Photos are courtesy of article authors and/or usually credited when known, unless requested otherwise.

**Cover picture: 100yr celebrations
Berlin**

Photo by: Chris Souness

Date: uly 2023

MCIVER & VEITCH

THE SOUTH'S AUTHORISED BMW MOTORRAD DEALER



ADVENTURE



HERITAGE



ROADSTER



TOUR

MCIVER & VEITCH



BMW Motorrad

ESTABLISHED
1932

112 CRAWFORD STREET, DUNEDIN / PH: 03 477 0236

www.mciverandveitch.co.nz



President's Podium

Chris Souness



BMW Motorcycle Club
Aotearoa New Zealand



August 2023

I can't believe how hectic July was for me! First, I had the opportunity to represent our club at the BMW Clubs International Council (BCIC) Meeting in Berlin and once back I was back up to Auckland for the launch of the BMW Motorrad site in Wairau Valley Auckland. The Berlin Trip was an incredible experience, especially since I also got to attend the Motorrad Days and help out at the Clubs International stand. Unfortunately, I didn't have any time to ride any bikes during my stay.

During the Council Meeting, I focused on advocating for our club's recognition by BCIC. In the past, the BMW Car Club of New Zealand held the official status as a delegate on the council, and our interaction with them has been minimal. I wanted to change that and ensure equal representation for our club. Many other regions have umbrella organisations that represent multiple motorcycle and car clubs, so I proposed the formation of BMW Clubs NZ as an umbrella structure for our two clubs. I'm thrilled to announce that the council unanimously approved this change, even though I couldn't vote myself.

Now, our next step is to work with the car club team to create a Memorandum Of Understanding that outlines how the new umbrella structure will function for both organisations. This will not only strengthen our communication channels with the council but also open up potential funding opportunities at a country level.

During the meeting, there was a strong emphasis on improving communication between the council and individual clubs. This will give us a voice and provide access to resources within the wider BMW group. I even had the pleasure of meeting Fred Jakobs, the head of the BMW Group's archive. He shared his passion for motorcycles and his previous role in overseeing the company's two-wheeler history.

If you're interested in learning more about the Council and its structure, you can visit by clicking [HERE](#) It provides all the information about BCIC, including the council's constitution and remember, the changes approved at the council meeting for New Zealand last month have not yet been reflected in the documents.

Stay tuned for more updates and exciting developments in the future of our club!

All the best and ride safe.



Area Report: Auckland

by Stephen Parkinson



June/July 2023

Auckland held two events during June which was lucky considering that weather forecasts seem to change as fast as they can be produced.

Lime Tree Café in Whitford hosted us for our Café event and, as usual, looked after us well. The café is situated below road level and nestled alongside Turanga Creek which, together with ducks and the occasional kayaker paddling by, makes for a tranquil setting. Lime Tree has earned a spot in our café rotation not because any particular element is spectacular but because the total package is relaxed and satisfying. Lime Tree is also the perfect launching pad for a coastal ride via



Kawakawa Bay, Kaiaua, and then inland for the return home. Following brunch a few of us headed off with that route in mind, roads were dry, and the emerging coastal scenery was picture-perfect. Soon after departing Kawakawa, we entered the tight



twisty bits leading to Kaiaua. Our dry roads now gave way to wet greasy tarmac calling for an instant adjustment to riding style. One rider (me) adjusted slightly less instant than the other ones and soon found his forward momentum arrested by a roadside embankment. A little assistance from other riders soon saw the bike back upright and

good to go. Aside from a bent rib, bent handlebars and a full-thickness rotator cuff tear, the bike and rider were all good, so our ride continued.

Our main ride for June was a collaboration with BOP. The "A" plan involved BOP and Auckland meeting up at the Firepot Café

Area Report: Auckland

by Stephen Parkinson



June/July 2023

Gordonton with the conjoined group continuing on to Raglan for lunch. Auckland were lucky with the weather, BOP were not and got very wet on the way to Gordonton. Upon leaving Gordonton, the riders continued as planned with one BOP rider deciding to head back toward home. Two Auckland riders unfortunately followed believing they were still part of the main ride. They were a long way off the intended route before realising and charting a course to rejoin at Raglan. Being a tad frustrated over how their day had panned out, they overlooked



their need to fuel up in Raglan and soon found themselves a long way from both fuel and home. Stress levels increased for our hapless duo when they arrived at Pukekawa and discovered that the GAS station was closed. Left with no



choice it was a case of carrying on, riding economically and hoping to make Tuakau. It turns out that BMW F850 GS bikes can manufacture their own fuel, the gauge on Renato's bike was registering

negative 27kms when he got to Tuakau.



Area Report: Auckland

by Stephen Parkinson



June/July 2023



July's café meet was set to be at The Riverhead, fortunately, we checked their current opening hours before sending the events email. A last-minute switch was made to one of our tried-and-true destinations, Black Cottage Café in Coatesville. Following brunch, a group of riders headed north on a mixed seal and gravel ride leading to Wellsford and then home down SH16.

Nikau Caves Café was our lunch destination of choice for July's main ride. As the crow flies, the venue is not far from home but there's all manner of seal and gravel that can be embraced getting there. David sorted gravel to and from, the bit

where this is possible always makes Nikau Caves a popular ride option. Sans a broken body and broken bike (remember the June Café Meet) I would have led the seal riders to lunch and home so I had to call on Club stalwart Greg Stimpson to step into the breach. Greg would normally have been all over the gravel routes, so it was a big ask but he took the task on, and a big personal thanks is in order. By all accounts, it was a great day out with new riders and a Waikato member joining the regular team. One of our new Club riders wanted to embrace the full gravel experience so much that he binned his bike on a right-hander. This enabled him to better interact with other Club members as his bike was extracted from a fence and backed onto the road. Fortunately, the consequences for the bike and rider were minor.

So that's it from Auckland till next month...

Stephen #3201





**BMW
MOTORRAD**

**BMW
MOTORRAD**

100
YEARS

MAKE LIFE A RIDE

PRESENTS

GS RALLYE OCT 28-29



LAKES RANCH ROTORUA

Route Options Sealed; Gravel and Seal; Challenge.

Event fee \$200, BMW riders \$160, BMWMCNZ members \$150, pillions \$140.

Includes 2 dinners, 2 breakfasts, tee shirt, stickers, sweep vehicle.

Old school route sheets provided, or create your own GPS file to suit your device.

[ENTER HERE](#)

Area Report: Bay Of Plenty

by Alan Belworthy



July's Ride



Ten riders to Rhubarb Cafe in Arapuni, then back roads through Waitomo Caves area to the Fat Kiwi Cafe in Otorohanga.

I was working when this ride was on, so Philip King led the ride. Much appreciated Phil, thank you..

Alan #3269

ANCHOR INN MOTEL
KAIKOURA

BOOKINGS ESSENTIAL
BOOK ONLINE

KAIKOURA'S SUPERB WATERFRONT LOCATION

WELL APPOINTED **FAMILY APARTMENTS** - One Bedroom Garden View (Sleeps 4); Two Bedroom Ocean View (Sleeps 4)

STUDIOS (Sleeps up to 2)
Executive Ocean View with Spa; Superb Ocean View; Standard Garden View

Reservations Freephone 0800 72 00 33

208 Esplanade, Kaikoura | Ph: (03) 319 5426 | Email: info@anchorinn.co.nz
www.anchorinn.co.nz

The Anchor Inn Motel is owned and run BMW Club member Paul Meilke #3311

QUAL MARK SILVER ★★★★★

LEAST FOOTPRINT
EASE AROUND
WASH-DRY-RELOCATE

Area Report: East Coast

By John Wuts



Robert, Les, Becky, Ed, Peter, Bronwen, John F, Leonie, Carole and Pam.

On a very cold Wednesday evening in July eleven of us gathered at the Thirsty Whale restaurant in Ahuriri to enjoy a meal together. The open fire was blazing and as you can see from the plates our stomachs were soon warmed up as well. Carole

and John showed some of the pictures they had collected over the years and Becky and Ed told us about the wonderful time they had had in the 'old' country.

John #1867

BML
The Bike Maintenance Shop

NEW ZEALAND
OWNED & OPERATED

Google Reviews
5.0 ★★★★★

BMW MOTORBIKES SERVICING & REPAIR

Specialising in servicing and repair of the BMW motorbike brand only. The BMW technicians waste no time when it comes to working on your motorbike repair and with no long booking delays, we will aim to have you back on the road sooner.

ACCIDENT REPAIRS

Being officially recognized The Bike Maintenance Shop can repair your BMW motorbike on behalf of all major insurance companies and their partners.

TYRE FITTING

We can take care of all of your tyre and tyre fitting requirements.

CALL US NOW 09 818 5448

021 128 5546
contact@thebmshop.nz

Unit 1, 2A Akatea Road, Glendene, Auckland
www.thebmshop.nz

Like us on Facebook
thebikemaintenanceshop

Events Page -

[Click HERE](#)
for latest details

October 2023 GS Rallye

North Island

28th-29th October 2023

Click the picture right for
more details and to Enter
or on our website...

A promotional poster for the BMW Motorrad GS Rallye. The top left features the BMW Motorrad logo. The top right has a '100 YEARS' anniversary logo with the slogan 'MAKE LIFE A RIDE'. The central text reads 'IN PROUD ASSOCIATION WITH GS RALLYE OCT 28-29'. The background shows a motorcyclist on a BMW GS Adventure bike riding on a dirt path through a grassy field under a sunset sky. At the bottom, there is a section for 'EVENT AND ENTRY DETAILS: LAKES RANCH ROTORUA' with specific route and fee information, and a 'CLICK HERE TO ENTER' link.

BMW MOTORRAD

IN PROUD ASSOCIATION WITH
GS RALLYE
OCT 28-29

BMW MOTORRAD
100 YEARS
MAKE LIFE A RIDE

EVENT AND ENTRY DETAILS:
LAKES RANCH ROTORUA
Route Options Sealed; Gravel and Seal; Challenge.
Event fee \$200, BMW riders \$160, BMWMCNZ members \$150, pillions \$140.
Includes 2 dinners, 2 breakfasts, tee shirt, stickers, sweep vehicle.
Old school route sheets provided, or create your own GPS file to suit your device.
CLICK HERE TO ENTER

November 2023 - South Island RAG

South Island RAG - 24th-26th November

More details soon...

January 2024 - AGM/National Rally

South Island AGM/Nat Rally - 19th-21st January 2024.

More details coming...

Please, always check our [website](#) for the latest details.

Area Report: Taranaki Tales

By Wayne Higgins



July 2023

I have been away for the last month and missed the bike so much that while in San Francisco we hired a Go Car that is registered as a motorbike (150cc). Had lots of fun hooning around (no more than 35 mph) San Francisco seeing the sites. Including Golden Gate Bridge and even driving down the famous Lombard Street. What a hoot!



Luckily, I made it back just in time for the July Ride organised by Phil D'Ath. And what a great ride this was, a perfect day for a ride with no wind and fine weather.

Around eight of us met in Stratford and left late morning, to ride the back roads down to Waipipi



Stop and a chat at Waipipi then headed to Phil's Ohangai Events Venue where we had the most amazing lunch that was to die for, cooked by Phil's wife Helena.

It was great to discover some roads I had not yet ridden in Taranaki. **Wayne #4097**



(Waverly) beach. Riding a little over an hour on nice twisty scenic back roads past the wind farm. Roads, which most of us had never been on previously.



Area Report: Rangitikei Roundup

By Murray Petherick



July 2023

To mis-quote the late Queen Elizabeth, who said in 1992 it was “annus horribilis”, as far as riding in Rangitikei this July is concerned it was “mensis horribilis” (a horrible month)! Having said that I have to add that a small group had a good impromptu ride, hosted by Denis H, when he ventured into the Rangitikei on July 7th.

The weather gods conspired to spoil riding opportunities on both our scheduled and re-scheduled ride days in July and yet again, today (August 2nd), when Neville and Peer were going to take us on an ‘impromptu’ ride through some of the Rangitikei back roads, we are having to stay by the fire and put up with a southerly storm event! It has to have been one of the most trying months in my time as Area Rep!

On a brighter note, we had a very successful brunch gathering at Marton on Sunday, July 30th. We gathered at the “3 on High Street Café” where I had booked ahead for a table for the usual dozen, or so, bods. Fortunately, we were also able to take over another vacant table as the numbers swelled to 20. In addition to that, we were joined, a bit later, by Robin and Joy’s son and family who live locally and who ‘popped in for a chat’. A very enjoyable gathering at a venue that was new to most of us, but one that we are likely to revisit sometime in the future.

Looking forward to more and better riding opportunities as we head out of winter!

Murray #2690

Avon City Motorcycles



The Ultimate Riding Machine



That’s right! Present your BMWMCNZ Club membership card at Avon City Motorcycles and you’ll receive a 10% discount on all service costs, parts and genuine BMW accessories.

MAKE LIFE A RIDE



Area Report: Wellington

By Denis Hulston



Club Social Meet & Eat 3rd July

Another good turnout for our monthly meet and meal at the Petone Club – good food and company.

Club Rides July 2023

Impromptu fine weather ride to Taihape - Friday 7th July

Seven riders braved cold early starts on a stunning day for riding – Denis, Peter, Ian H, Barry H, Ian W, Murray P, Martyn W.

Wellington riders left Paremata at 8am to meet Rangitikei riders for a warmup coffee at The Woolshed where we found a table close to the fire. We'd enjoyed great views of a snowed-up Mt Ruapehu from the Foxton straight despite some patches of low sunstrike. Ian and Peter left us here to return to Wellington, The ride continued to Managaweka where we left SH1 to wander through backroads, Potaka and Toetoe Roads, and back to the main road at Utiku. The roads were in good condition despite evidence of heavy rain and slips.

Any more rain, and this would be rice growing country rather than beef and sheep. We enjoyed inspiring backdrops of the Ruahines behind the Kawatua and Rangitikei gorges.

At Taihape, we joined Martyn who had ridden his beautiful new red RT 1250 from Hamilton – very pleased with it. Barry also had a new bike, a Trans Alp, which he'd had for two days. He left us to return to Whanganui via the Parapara Road. Hope you're enjoying that bike, Barry. The rest of us returned via Vinegar Hill and Stormy Point (not at all stormy) and back routes to Shannon and back to Wellington by 4pm. An excellent ride – 475km all up.



Kawhatau River and Ruahines from Kawhatau Valley Road

Area Report: Wellington

By Denis Hulston



Toe Toe Road – Murray, Barry, Ian, Denis



Stormy Point – not at all stormy today – Martyn, Murray, Ian, Denis

Ride Cancellations

Our Palliser ride planned for Sunday, the 16th was cancelled due to a gale warning forecast.

And, our Wellington ride planned for Sunday the 23rd was cancelled because of rain. However, some of us made for breakfast at the Pavilion in Days Bay as planned – good company, and good craic. Not a bad way to spend a Sunday morning with friends.

Cont...

Area Report: Wellington

By Denis Hulston



Palliser Ride - Sunday 30th July

We had planned some gravel riding for the 30th, however, because of very wet weather during the week in the Wairarapa, we rescheduled our sealed road ride to Palliser for lunch at Waimeha. Seven riders – Keith, Alex, Chris, Dave, Chester, Martyn, and Denis left Remutaka at 10 am, time for any ice to shed. It was a cold start, but thankfully, no ice on the route. We enjoyed good riding, sunshine, and no wind. The Palliser Road along the coast is suffering slumps and sea damage, but the riding was good. The cliffs and coastline always make for a great ride. There were a few brave surfers out, and we could see the Kaikoura ranges covered in snow. Denis #3184



Lunch stop at Waimeha, Palliser Bay ride – Chris, Keith, Alex, Dave, Chester, Martyn, Denis



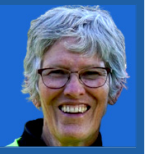
Above: Lunch at Waimeha – Keith, Chris, Chester, Denis, Alex, Martyn, Dave



Left: Kaikoura Ranges across Palliser Bay – A timeless view worth repeating.

Area Report: Top of the South/Te Taiuhu

by Gretchen Holland



Queen Charlotte Tavern for lunch - Sunday 9th July



Queen Charlotte Tavern

After a very wet Friday and Saturday Nelson was gifted with a cloudy, dry morning. We had fine drizzle briefly at Canvastown and again when we left Linkwater. The stretches of water around Havelock and when we came back around Nelson Haven were gorgeous – full tide, glassy calm, and many shades of grey... We forfeited the usual coffee stop and rode straight to the Tavern where Ross (flying the flag for Marlborough today) had just arrived (despite heavy rain that morning and on his way home too).

The Queen Charlotte Tavern is an unusual place – it looks like a large house, set back from the road, with a stage on the big front lawn, a ‘quaint’ interior, two open fires

and excellent food. Before heading home, most of us stopped at Rai Valley for coffee and a debrief (not the weather for ice cream). It was a good turnout of 11 bikes – a much more manageable number to keep track of than the 20 bikes on last month’s ride to Picton. I’m ashamed to say that it wasn’t until later that evening when I was doing the ride report, that it occurred to me I didn’t remember seeing one of the riders in Picton. When I got in touch, he said he lost us between the parked bikes in Picton and the picnic spot on the foreshore, so he tootled off home. Some learning there...

Gretchen #949



The Bike Park



Shep with his K75

Riders were -
Peter W, Rick, Trudi, Anja,
Murray, Gretchen, Matthias,
Ross, Shep -
And visitors – Annette & Chris



Ross's classic

Area Report: Top of the South/Te Taiuhu

by Gretchen Holland



And now for something a bit different...



On our last ride, Murray was talking about how the band he plays in was going to be in Nelson at the end of July for a blues night.

So, 10 of us fronted up early for dinner first and then danced the night away (well, most of us danced for quite a bit of the night... practising for the Annual Rally perhaps?).

My apologies to anyone who didn't receive the email – some people got it and some people had to retrieve it from their spam box. Who knows why...

Gretchen #949

Area Report: Canterbury

by Ralph Moore



Mid-Winter Tour to Waihao Forks - 28 July 2023

This year we chose to ride to Waihao Forks for our Mid-Winter Tour. Six of us gathered at Rolleston on Friday morning and headed south down Highway One, to get quickly away from the city. Off the main highway, our first stop was for morning tea at the Woodbury Store Cafe.

Leaving the Cafe, we were straight onto gravel and then struck some trouble negotiating the ford across the Te Moana river. Some of us got wet feet as we handled our bikes through the badly scoured-out river crossing. We meandered through the network of back roads to Hanging Rock, over Mount Gay to Rockwood. Fantastic roads and NO cars.



Coffee at Woodbury Store Cafe. Hans Schumacher, Jacques Vosloo, Garth Brookland

After a short stretch of sealed road through Albury, we turned onto Monavale Road and followed through Cannington onto the BackLine Road. And time for a smoko stop.



Stunning Views from the ridge at Rockwood

Soon we were approaching Waimate, and as we were running early, decided to ride up Mount Studholme and take in the views across South Canterbury



Smoko at Otaio Gorge



On top of Mount Studholme

We arrived at the Waihao Forks Hotel well before sunset and proceeded to the bar for refreshments and dinner. This Hotel is historic and full of character and characters. Saturday morning after breakfast, we headed through Pentland Hills and found some rather slippery sections of track to contend with. Particularly some very grassy/muddy parts, resulting in one minor spin-out and dropped bike. And one broken gear lever requiring a bush repair before proceeding.

Area Report: Canterbury

by Ralph Moore



We spent the day riding to Danseys Pass Hotel and back, finding a number of new roads to explore. Managed to get back to Waihao Forks, just after dark. Saturday night at the pub with the locals making us welcome, and then watching the Bledisloe Cup. A great night !! Sunday Morning, we crossed Meyer's Pass. Struck a traffic jam in the middle of the Pass. It was easiest to just pull over, turn our engines off and sit still while a mob of 500 sheep wended their way past us, as the sheepdogs rounded them.

It was very pleasant riding through Meyer's and then up the long straights of Hakatamea Valley, stopping at the top of the Hakatamea Pass, close to some snow now.

Coming down from the Pass, we struck some icy patches on either side of the fords we crossed. This made for some exciting moments. Then we were through McKenzie Pass and out to Fairlie to the Pie Shop and join the queue to buy a pie.

Soon we were back onto gravel and wound our way through the hills to Geraldine, and out onto the plains, choosing to stick with the inland road, and over the Rakaia Gorge. A few more gravel roads yet. We finally got onto the blacktop at West Melton and soon said our farewells and headed home. It was a very



enjoyable weekend with a great team of riders.

Ralph #3082

BMW Motorrad Days Berlin 07-09 July 2023



Having the opportunity to attend the BMW Motorrad days was a real privilege especially, this year as 2023 is the 100th anniversary of BMW Motorrad.

The event was held in Messe Berlin which is one of the top ten largest event sites in the world. It's a huge location with many indoor halls and outdoor areas all filled with stands and motorcycle displays. I was like a kid in a candy store! The event started mid-afternoon on Friday and ran through the weekend until late Sunday.

Ian Macartney, a fellow board member and our Area Representative from Northland was already in Germany with his family, and he took the time to come up on the train from where he was staying in Garmisch, to visit for the weekend. Garmisch is a beautiful town nestled below Zugspitze, Germany's highest peak, with wonderful mountain views. It was a 10-hour train to Berlin for Ian and I appreciated having someone I knew there with me to share the experience.



Until quite recently, the Motorrad Days were held in Garmisch and everyone I spoke to that had been to both locations said Garmisch was the one to attend. Someone had told me there were issues with the event getting too big for the lovely village so they were forced to relocate it to Berlin.



One of the tasks I had to undertake whilst there was to assist with manning the Clubs International stand which was a huge area in the rear corner of one of the halls. There was seating and coffee tables and beverages for anyone wanting to

take a rest from the hustle and bustle of the show. There were also a number of classic bikes on display all of which were ridden as part of a six-day pre-tour trip. Individuals from each of the countries that were in Berlin for the council meeting helped man the stand over the course of the weekend.



The bike displays were all laid out according to age and style so you could walk from stand to stand looking at examples of bikes from the 1920's right the way through to the new electric scooters and the latest variants available.





This is the one-millionth GS to come off the production line. They finished it in a matt colour paint which makes it look quite different and interesting to look at.



There is also a huge focus in Europe on the customisation of the R18, and many examples of modified bikes were on display. I must admit it's not my thing, but you must admire the effort and energy that has gone into creating some of these wonderful examples.



On Friday evening all the staff and those who were working at the show were invited to dinner which was held in a huge beer tent. There was a great buzz and the cover bands performing on the night were fantastic. The food just kept on coming and after working our

way through a huge platter of meats, cheese and bread, they then served us half a chicken each!



Many of the exhibitors were staying on site and later in the evening a few of us decided to take a walk around the stands in the outdoor areas. Many were displaying retro-style bikes and had their own individual riding gear and accessories.



Whilst walking through the stands and admiring all the retro bikes we stopped and had a long chat with Donald Ganslmeier. Donald is famous for his fairground ride called "The Wall of Death." He has been riding the wall for over 24 years and he owns the oldest in the world. They travel all over Europe moving from event to event earning income from the money people throw into the area after the display has finished. A tough life, I'm sure. Ian and I managed to see the show on Saturday, and it was very exciting. The riders start from the bottom and work their way up the nearly vertical wall doing all sorts of stunts, no hands, no feet etc... They ride Indian bikes and they did have an older BMW in the line-up. The main reason for using older Indian bikes is that the lowest heavy point of the bike is under the axles. If you get a chance to see a show at any time, don't miss it.

Cont...



In the same outer area of the complex were examples of BMW bikes through the ages. Each with excellent explanations as to their part in the overall development and growth of the brand. I spent at least an hour popping into each location and reading about the history of BMW Motorrad and how the Motorcycles developed over time. My favourite was the R80 PD so I had to take another picture of it from the inside.



I didn't have a chance to ride any bikes but there were huge lines of people over the entire weekend who had pre-booked test rides waiting for their turn. Groups of 6-10 riders on similar machines disappeared at frequent intervals. There was a huge selection from the CE-04 Electric bike to the R18 and S1000RR. I'm sure the complete range of current bikes were available to take for a spin.



Not far from our Clubs International stand, was the area where the stunt riders performed. The riding was impressive and what they can do with such a heavy motorcycle is amazing. One event called the Police Rodeo Show featuring Quinn Redeker had him throwing a 1250 RT around like it was a small motocross bike. It's amazing what these guys can do with lots and lots of practice. I couldn't spend too much time out there watching as it was really hot with next to no wind. We had blue sky and hot sun every day with the temperature hovering in the low 30s. Standing outside crammed in a big crowd watching the show was not that pleasant.



They were also running factory tours to the Motorcycle assembly plant in Berlin Spandau which Ian was keen to do. You had to pre-book your space and we hadn't had the opportunity to get to the stand to book on Saturday. I didn't go as the factory wasn't running on Sunday and a tour was included as part of the council meeting which was to be held at the plant anyway. Also, I would have a chance to see it running as my visit would be midweek. It was fortunate that my entry pass allowed me access to the complex a little earlier than the masses of visitor so I was able to pop



Cont...

over to the ticket counter before the doors opened to the public and secure Ian a ticket for mid-morning.

I wandered out with him to wait for the bus and after he left, I took the time to look around it all the bikes parked outside owned by visitors. You get to see an array of all types of bikes both old and new and often you can catch a glimpse of some real gems.



Whilst out in the car park we noticed this van with Unbreakable written on its side. We wandered over to take a closer look and you can see as shadows within the logo tanks, soldiers and an R18. The colours should have given it away but we soon realised it was a group from the Ukraine that had driven all the way up to attend the show. They were very interesting to talk to. We didn't want to dwell on the war at all, but it did bring things into focus for us that their friends and family were back at home fighting a war and we were here enjoying the show.



Ian and I then walked to the local Uban station for the short ride back to our respective hotels.

I have to say it was a real privilege to attend the Motorrad days as part of my trip to the Council meeting. There is so much to see and do I would thoroughly recommend you visit if you have the chance in the future.

Chris Souness, President

Member's Story - On their travels

Grame & Sue Duncan

In 2019 we parked up our bike in a barn in the UK with the intention of returning in 2021 to start riding through Europe.

The idea was to start at the far end i.e. Scandinavia and over the next few years work our way back towards the UK. Then we figured if we were going that far maybe we should do Iceland....and then, well the ferry stops at the Faroe Islands so let's do that too!

Finally, in 2023 we made it, 4.5 months of travel planned or actually very little planned!



Doing a bit of prep we decided Iceland is a bit dicey for accommodation and weather. The population is only 390,000 and they have huge numbers of tourists, and you can only camp in proper campsites, so we pre-booked our accommodation in the Faroe Islands and Iceland, a mix of home

exchange and hotels. We stayed at most for 2-3 nights and did day trips out.

The Faroe Islands are a small group of islands with many joined by tunnels and bridges. The tunnels are a mix of old ones with no lighting and fancy ones with roundabouts and intersections

We were there for 3 days. Beautiful weather and windy roads. The ferry to the Faroe Islands is a day and night, then to Iceland is another day and night. Iceland is stunning in a very extreme way. It is very volcanic so vast areas are rock and lava flows. It can also be incredibly windy as we discovered near the end of the trip. We had to bail on our 5-hour ride just 2 hours in due to hurricane-strength wind gusts. Another rider got blown off the road and they ended up closing the road. It was very scary on the bike, but quite entertaining once we were safely settled and tried to walk on the beach! We saw puffins on our first day



Lots of waterfalls, fantastic history, beautiful views and



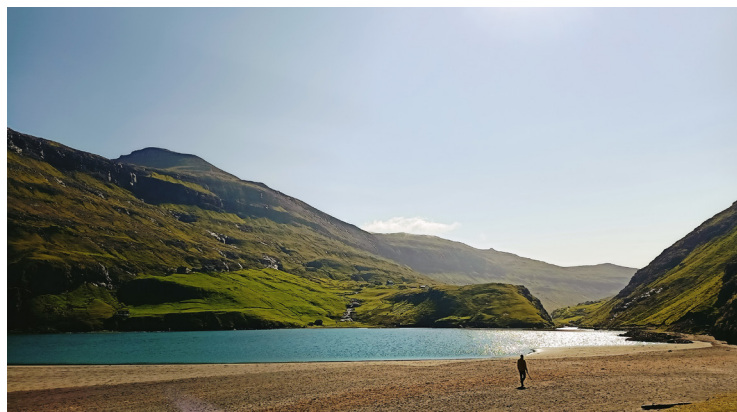
glaciers, went on a whale watch trip where we saw 6 humpback whales and rode a couple of F roads which are 4x4 roads and often only open at the latter half of June.



These roads were very rough, 50kms of corrugation on one, but they took us to wild hotpots. Hotpots are what they call small hot pools and the wild ones are literally that. One was a hot waterfall with the pool underneath and the other

Member's Story - On their travels

Graeme & Sue Duncan



was a pool in a river with hot and cold water coming in.



No change rooms! That was also a big learning curve, pool etiquette. Except for a couple of very touristy hot pools which we avoided, there are very definite rules about pool bathing. Most towns have public pools with hotpots of varying temperatures. If you don't follow the rules people will tell you off. You leave your shoes in the foyer, head to the dry room (men and women are separate), strip off, leave your clothes in the locker and head to the shower room. This is a communal shower room, 6-8 showers in the ones we visited. You have a full shower as you would at home THEN you put your

togs on, leave your towel on the rack in the wet room and head to the pool area. No phones, towels, bags. When you are finished you head back to the wet room, rinse, remove togs and dry yourself before heading to the dry room to dress. We didn't find Iceland much more expensive than New Zealand except for fuel, but we were cooking for ourselves a lot. We stayed with a family in Selfoss who gave us dried fish you eat like crackers with butter to try, but they also told us that very few Icelandic people eat whale or puffin and that is really a tourist gimmick. We didn't try either. We met several motorcyclists on our trip and were all on the same ferry back to Denmark.

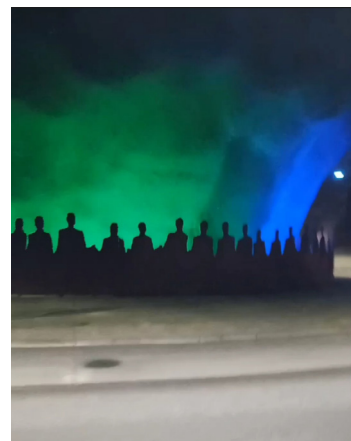


There were 2 Romanians, 2 French and 1 Polish rider. The Romanians have invited us to visit them.

In our 17 days, we had 3.5 days of rain and half a day of impossible wind. We had a great time...now off to Norway!

Sue & Graeme Duncan

Follow them on FaceBook.
[2wheels2panniers2up](https://www.facebook.com/2wheels2panniers2up)



BMW Motorrad presents ConnectedRide Smartglasses.



Innovative glasses with head-up display technology



Colour: Anthracite.



Watch the video
on our homepage

What was considered science fiction a few years ago...

is now becoming reality with the BMW Motorrad ConnectedRide Smartglasses. The innovative motorcycle goggles provide the head-up display technology already familiar from the automotive sector and project all relevant data, such as navigation, speed or gear, directly into the rider's field of vision in real time, thus enabling particularly anticipatory and thus safer motorcycle riding.

The BMW Motorrad ConnectedRide Smartglasses can be easily connected to your smartphone via Bluetooth and app. The projection can be positioned and the settings can be selected before the ride and also while riding via the multicontroller on the motorcycle handlebars.

In addition to the individual user interface and an increase in riding safety, the smartglasses also offer a high level of

comfort. The design of the smartglasses and the display has been adapted to meet the special needs of motorcyclists. In addition, the BMW Motorrad ConnectedRide Smartglasses can be adapted to fit numerous helmets and face shapes. This makes the smartglasses comfortable to wear even on long day trips. The lithium-ion battery enables up to ten hours of operation.

- Two sets of lenses (tinted & 85% transparent lens supplied).
- RX adapter for adjusting the lenses (up to max. 4.5 diopters).
- Can connect to a smartphone and the BMW Motorrad Connected App via Bluetooth.
- Real-time GPS data transfer from app to smartglasses.
- Head-Up function for navigation with individual display with upto 10 hours of use.
- Displays speed, speed limit, gear, navigation directions, street names & intersections.
- Integrated sensor and optics module to securely transfer and display data on the glass.



Must check the expiry date
on my membership card
with BMWMC

members!



Remen
about
ema
edit



**BMW
MOTORRAD**

PRESENTS

GS RALLYE OCT 28-29

**BMW
MOTORRAD**

100
YEARS

MAKE LIFE A RIDE



LAKES RANCH ROTORUA

Route Options Sealed; Gravel and Seal; Challenge.

Event fee \$200, BMW riders \$160, BMWMCNZ members \$150, pillions \$140.

Includes 2 dinners, 2 breakfasts, tee shirt, stickers, sweep vehicle.

Old school route sheets provided, or create your own GPS file to suit your device.

[ENTER HERE](#)

BMW Motorcycle Club of Aotearoa New Zealand - Risk Management Plan

The BMW Motorcycle Club of Aotearoa New Zealand is an organisation whose members join together for rides to nominated venues and for other social occasions. The organiser nominates the destination and regrouping stages along the way, but otherwise has no influence upon the way that riders behave on the road. There is no element of organised competition in the rides.

Riding Code:

1. All Club members on Club rides shall do so as individuals responsible for their own safety and shall take into account the safety of others they encounter on the ride.
2. Club members are responsible for ensuring that their motorcycles are in a safe and legal condition, the minimum being to Warrant of Fitness standards.
3. Riders, Pillions and sidecar passengers where required, shall have as a minimum standard New Zealand Approved Motorcycle Helmets, and stout footwear, gloves and clothing that will be capable of protecting their body in the event of a mishap.

4. Club Members are to go to the aid of any others suffering a mishap.
5. Rider organisers shall nominate the destination for the ride as well as any regrouping locations or other stops. The organiser is not responsible for the other riders' behaviour or safety.
6. Riders shall ride at a speed and in a way that is comfortable for them. Do not ride outside your personal comfort envelope.
7. If a rider is unfamiliar with the route, they shall arrange to follow another rider who does know the way and who travels at a comfortable pace.
8. Riders who decide to travel as a group shall adopt a staggered riding formation such that there is an accepted following distance to the rider immediately in front. A reasonable following distance is indicated by a time of two seconds between riders for dry conditions and longer for inclement conditions and on loose surfaces.
9. The Ride Organiser and or the Club are not responsible for the participants' safety, and all participants participate at their own risk. All participants are aware that they are travelling on open public roads and are responsible for their own safety and compliance with the Road Rules and Laws.



An advertisement for Arcadia Motel Christchurch. The main image shows the motel building with a sign that reads "ARCADIA MOTEL CHRISTCHURCH Comfortable, spacious affordable accommodation". To the right, there are three smaller inset photos showing the interior of a room, including a bed with a red coverlet, a living area with a blue sofa, and an outdoor view of the motel building.

FREEPHONE 0800 272 23 42

564 Ferry Road, Woolston, www.arcadiamotel.co.nz

Geoff Lester 027 285 1293

Marketplace

To advertise, please email
newsletter@bmwmc.nz

Marketplace is a service for members of BMWMC, NZ.

Advertisements will be accepted from members, commercial traders and non-members when it is considered in our members' interest to do so. No charge is made for Marketplace advertising. The Editor and Executive reserve the right to reject or modify any advertisement considered inappropriate and take no responsibility for errors or omissions, the quality of items, claims made, or for any transactions that ensue.

Advertisements run for approx. 3months from the date first published unless otherwise arranged with the Editor.

Free to a good home...



Contact. Neil Barnard
e: barntech@farmside.co.nz
M: 027 238 7395

Free to a good home but
collected from Whakatane.

In the process of clearing my shed, I'm offering, free to a good home, this soft BMW top box. Complete with a mounting platform and lockable clamping attachment but sadly, no key is included. It is reputedly off a R1150R, but I can't guarantee that. Handy with several external pockets and in good original and usable condition.

Wanted:

A BMW R 1100 GS

If you know of one, please contact:

Paul Spanbroek 022 040 2279



BMW Motorrad

MAKE LIFE A RIDE.

motomart

Service Department:

Dave: 04 589 5106 ☒

Sales Executives:

Kent: 021 445 787 ☒

Gareth: 022 333 6473 ☒

Dealer Principal:

Ian: ian@motomart.co.nz ☒



Proudly servicing the Lower North Island with
Genuine Parts, Genuine Accessories and
Genuine Service.

Address:

7 Rutherford Street
Lower Hutt
Wellington, 5013

Phone:

04 589 5106

Web:

www.motomart.co.nz



Area Representatives



NORTHLAND

Ian Macartney
027 281 0242
northland@bmwmc.nz

TARANAKI

Wayne Higgins
027 506 6488
taranaki@bmwmc.nz

WELLINGTON

Denis Hulston
027 443 3604
wellington@bmwmc.nz

AUCKLAND

Stephen Parkinson
021 989 092
auckland@bmwmc.nz

RANGITIKEI

Murray Petherick
027 433 6657
rangitikei@bmwmc.nz

TOP OF THE SOUTH

Peter Brandon
021 842 291
topofthesouth@bmwmc.nz

WAIKATO

Paul Quilter
07 859 2512
waikato@bmwmc.nz

EAST COAST

please contact
027 281 0242
eastcoast@bmwmc.nz

CANTERBURY

Ralph Moore
027 284 7508
canterbury@bmwmc.nz

BAY OF PLENTY

Alan Belworthy
027 496 0748
bayofplenty@bmwmc.nz

WAIRARAPA

Peter Tibbs (Aka Tibsy)
027 335 6843
wairarapa@bmwmc.nz

SOUTHERN

Tharon Knoetze
021 034 1760
southern@bmwmc.nz