



BMW Motorcycle Club New Zealand

# NEWSLETTER

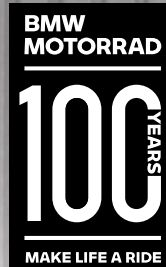
Official BMW Club - *Established 1975*

July 2023

BMW Motorcycle Club  
Aotearoa New Zealand

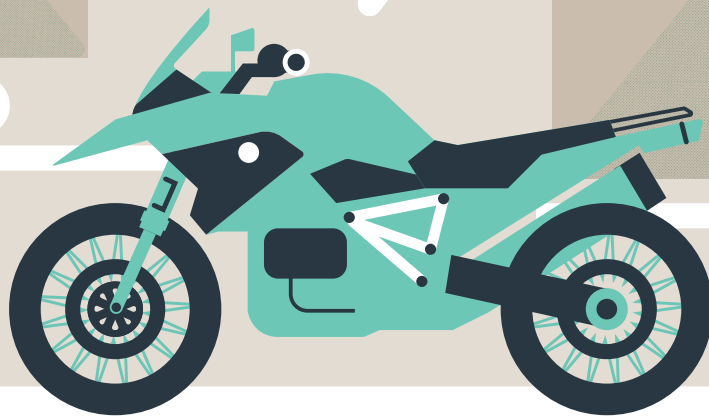


## BMW Motorrad celebrates one millionth GS with boxer engine.



+ BMW Announce:  
World premiere of the new  
BMW R 1300 GS on  
28 September 2023 at  
BMW Motorrad in Berlin.

I'll SHOW  
YOU PARTS OF  
THE WORLD  
OTHERS FEAR



Just like a BMW R1200, every motorcycle has a unique character. Which is why we design insurance that's anything but off-the-shelf. If you have a bike that helps you escape the ordinary, talk to us about customised insurance you won't find anywhere else.

**Star Insure Morotcycle. It's the insurance your bike would choose.**

ESCAPE THE  
ORDINARY



0800 250 600



starinsure.co.nz

starinsure  
Motorcycle



**EDITORIAL COPY TO:**

Colin Gates  
[newsletter@bmwmc.nz](mailto:newsletter@bmwmc.nz)

**OTHER CORRESPONDENCE TO**

The Secretary  
BMWMCNZ  
PO Box 109-245  
Newmarket  
Auckland 1149  
New Zealand

**PRESIDENT**

Chris Souness  
021 494 952  
[president@bmwmc.nz](mailto:president@bmwmc.nz)

**VICE PRESIDENT**

Stephen Parkinson  
021 989 092  
[vicepresident@bmwmc.nz](mailto:vicepresident@bmwmc.nz)

**SECRETARY**

David Fish  
021 927 901  
[secretary@bmwmc.nz](mailto:secretary@bmwmc.nz)

**TREASURER**

Colin Gates  
027 9222 350  
[treasurer@bmwmc.nz](mailto:treasurer@bmwmc.nz)

**MEMBERSHIP SECRETARY**

Barry Petherick  
027 341 6949  
[membership@bmwmc.nz](mailto:membership@bmwmc.nz)

**AREA REP LIAISON**

Ian Marcartney  
027 281 0242  
[arl@bmwmc.nz](mailto:arl@bmwmc.nz)

**BMWMC GEAR**

[shop@bmwmc.nz](mailto:shop@bmwmc.nz)

**Thank you for your  
feedback and stories**  
[feedback@bmwmc.nz](mailto:feedback@bmwmc.nz)

**Contents**

- 3 [New Members \(below\)](#)
- 5 [President's Podium](#)
- 6 [Area Reports starts](#)
- 14 [Tribute to Ken Wilson, Wellington](#)
- 30 [Plastic Free July](#)
- 32 [R 1300 GS Spy Shots by MCN](#)
- 37 [Area Representatives contact details](#)

**Welcome to our New Members**

We hope you'll take part in many of your local and national events. Your Area Rep will be pleased to introduce you to other members in your area. Our monthly newsletter is an open forum for all members. If you fancy a story and/or photos published about your ride, the rebuild of your bike, a book you might have read or a movie you have seen lately, or just want to get something off your chest about how the club is going, then please email/phone the Editor no later than the 2<sup>nd</sup> day of the month.

**We look forward to your contributions.**

**A Very Warm Welcome to:**

Kevin	CROSSLEY	HAMILTON
Phil	D'ATH	HAWERA
Dylan	MACKIE	MOSGIEL
Andrew	WEBB	RAGLAN
Marek	WOJCIEROWSKI	OPUNAKE

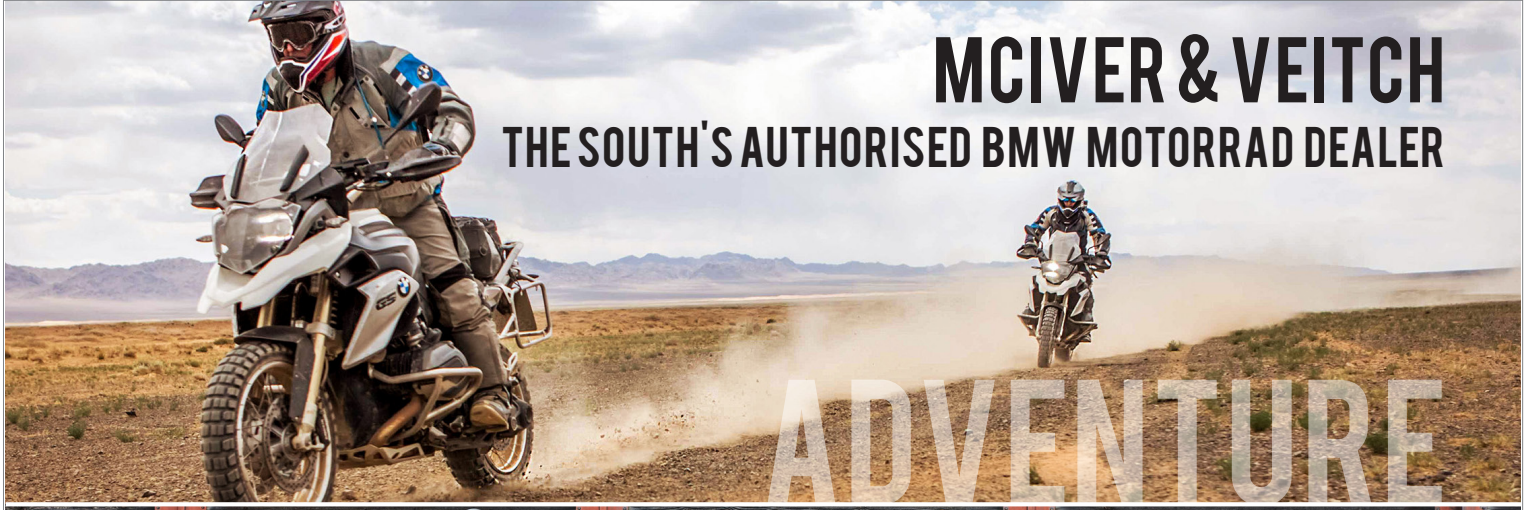
**Please Note:** Any material intended for publication in the newsletter should reach the Editor no later than the 2<sup>nd</sup> day of any month but the earlier the better. The Newsletter is an open forum for all members. Views expressed by members may not necessarily represent the views of BMWMC. Publication of all material is subject to the Editor's discretion. Photos are courtesy of article authors and/or usually credited when known, unless requested otherwise.

**Cover picture: One millionth GS  
with boxer engine**

**Photo by: BMW Motorrad**

**Date: June 2023**

**MCIVER & VEITCH**  
THE SOUTH'S AUTHORISED BMW MOTORRAD DEALER



ADVENTURE



HERITAGE



ROADSTER



TOUR

**MCIVER & VEITCH**



BMW Motorrad

ESTABLISHED  
**1932**

112 CRAWFORD STREET, DUNEDIN / PH: 03 477 0236

[www.mciverandveitch.co.nz](http://www.mciverandveitch.co.nz)



## President's Podium

Chris Souness



BMW Motorcycle Club  
Aotearoa New Zealand



# July 2023

I'm sitting at home looking out at the weather and as you do, "asked Siri" the personal assistant on my phone what the outside temperature was, 11 degrees was her reply. Whilst that's not cold, especially for those residing in the countries' lower latitudes it's still a real shock to the system when the lazy South Westerly blows through. I must admit, the winter weather has been pretty good with many cool clear windless days so we can't complain too much.

I dragged the bike out of the garage yesterday and had a quick blast in the back blocks of Whiteman's Valley with a friend. It was nice to blow out the cobwebs on a cold and crisp sunny winter's day. The ambient temperature gauge on my GPS was up and down like a yoyo as we rode in and out of the shaded areas. There were a good number of bikes on the road, out and about doing the same thing and the friendly nod or wave from them as we passed was appreciated.

It's great to see the ongoing club member activity on our Facebook page.

We are seeing posts of all kinds, from the age-old "What tyres are you using?" to more comprehensive reports from those fortunate enough to be venturing out on motorcycling trips both locally and internationally. All the input is appreciated and helps keep the member interaction going even when catching up face-to-face is not possible. Keep the posts coming and a big thank you goes out to the admin team who process new member requests and help mediate input as required.

Our Area Reps continue to work hard to keep the regular local meetings, monthly organised rides and impromptu rides going over the winter months. If you are keen on some social interaction and great riding, keep an eye out for their emails and take the opportunity to join in the fun. If you are not receiving the emails for some reason, just pop onto our club website and there you will find the details of your local representative. Just touch base with them and they will make sure you are on their mailing list to receive local updates.

We are now past the shortest day so can I say we are on the downward slope to summer or is it too early to say? Anyway, the club calendar for the balance of the year is filling up nicely. If you are keen to learn more about the club events pop onto the events page on our website.

Have a wonderful July, enjoy your riding and remember to make good decisions.

All the best and ride safe.



# BMW Update... Auckland

by Stephen Parkinson



## Opening in Auckland This Month!



### BMW Motorrad NZ

is under the umbrella of SD Distributors NZ Ltd. Many of you will have met Brand Manager Dennis Holland and watched his presentation at this year's BMWMCNZ Rally and AGM, so you will already be excited to see what's coming.

Everything BMW arrives in NZ via SD Distributors and all BMW franchised dealerships are answerable to Dennis, including Continental Motorrad, Auckland, opening later this month.

Our BMW experience will be enhanced by improved parts supply, and greater availability of motorcycles, merchandise, and accessories.

Continental Motorrad Wairau Rd will be New Zealand's Flagship Dealership and Dealer Manager Steve Mottershead is responsible for it. Meeting Steve recently,



he gave me a glimpse of the work going on behind the doors of their large premises.

I was shown the progress of the workshop and showroom, getting a taste of what was coming. It all looked state-of-the-art and very impressive! Opening later this month, Seve is counting the days (and possibly even the hours!) to its opening.

By the time we were done, even I was counting the days and very much looking forward to seeing it open to us all...

**Stephen #3201**

Contact Steve about bike sales or servicing on 021 406 326 or e: [steve.mottershead@continentalmotorrad.co.nz](mailto:steve.mottershead@continentalmotorrad.co.nz).



**BMW  
MOTORRAD**



# Roadster Sale

## Save the GST

- S 1000 R
- R 1250 R
- F 900 R

**MAKE LIFE A RIDE**

**PURE RIDING EXPERIENCE**

\*Excludes MY23. Valid 1st June to 31st July only or while stocks last.  
Colour may vary from that shown.

### Authorised BMW Motorrad Dealers

**Avon City Motorcycles**  
13 Epsom Road  
Sockburn, Christchurch  
(03) 341-3490  
smcintosh@acford.co.nz  
avoncitymotorcycles.co.nz

**Boyd Motorcycles**  
403 Te Rapa Road  
Waikato, Hamilton  
(07) 850-4522  
motorcyclesales@boyds.co.nz  
boydmotorcycles.co.nz

**Continental Motorrad**  
45-65 Wairau Road  
Wairau Valley,  
North Shore, Auckland  
021 406 326  
sales@continentalmotorrad.co.nz

**Experience Motorcycles**  
625 New North Road  
Kingsland, Auckland  
(09) 845-5950  
sales@experiencemotorcycles.co.nz  
experiencemotorcycles.co.nz

**McIver & Veitch**  
112 Crawford Street  
Dunedin  
(03) 477-0236  
sales@mciverandveitch.co.nz  
mciverandveitch.co.nz

**Motomart**  
7 Rutherford Street  
Lower Hutt, Wellington  
(04) 589-5106  
lan@motomart.co.nz  
motomart.co.nz

**Mount Motorcycles**  
23 Totara Street  
Mount Maunganui, Tauranga  
(07) 575-4190  
sales@mountmotorcycles.co.nz  
mountmotorcycles.co.nz

# Area Report: Bay Of Plenty

by Alan Belworthy



## Sunday 18<sup>th</sup> June

The day started off overcast with rain threatening.

Undeterred, six hardy souls headed off over the Kaimai ranges, through Scotsman Valley and the Waikato to meet up with the Auckland crew at the Fire Pot café in Gordonton, arriving in the rain.

We had a great morning tea and renewed acquaintances with our fellow Auckland members and now doubling the numbers to twelve 12 riders.

From there we headed off to Raglan for lunch in what looked like an unwelcoming sky. Five riders decided to head home directly from Gordonton and somehow, 2 more riders got lost following them instead of the cornerman?? We had a great run through to Raglan with only 1 brief minor shower on the way via Ngaruawahia, Glen Massey and past Waingaro Hot Springs.

Arriving in Raglan, we refuelled our bike before grabbing lunch at, The Wharf Kitchen and Bar. There, as we were parking our bikes, the owner came out asking how many were in our group for lunch and promptly set a table up in a room just for us before we'd even walked through the door. The food and service were fantastic, and I highly recommend this place to anyone.



Leaving for home, we separated into two groups at the Ohautira turn-off, for our respective routes. The Bay of Plenty team had a dry ride all the way home. A huge thanks to the Auckland team

organisation that made for a great day out, and look forward to doing it again!

Cont...



# Area Report: Bay Of Plenty

by Alan Belworthy



## Saturday 24<sup>th</sup> June - BOP BMW Club Mid-Winter Dinner



Our mid-winter dinner turned out a huge success with 24 people attending the Oak Tree Restaurant in Greerton. This restaurant offers a buffet that is up there with the best I have experienced, a great range of food that was very well prepared provided a fantastic dining experience that encouraged more than a few of us to maybe have that bit extra!

A thoroughly enjoyable night to catch up with a great bunch of people and our partners/wives in a relaxed atmosphere.

I look forward to the Christmas party at the end of the year so we can all catch up in a social setting once again.

That's the round-up from the Bay.

Alan #3269



# Area Report: East Coast

By John Wuts



Carole, Robert, Pam, Les, Bronwen, Peter, Leonie, John F, Ann, Alan, Tony, Maria and Peter (friend of Tony)

On Tuesday 27 June fourteen members and ex-members sat around the table at the Thai Silk Restaurant in Hastings (recommended) to share a meal and tall stories together.

We would recommend this place because we were warmly received by Linda, and the food is delicious

as it is cooked one order at the time.

For July Alan came up with the idea of us all bringing some pictures from our motorcycling days so we could share these with our members that are newer to the club. Perhaps an idea for other clubs as well?  
**John #1867**

**BML**  
The Bike Maintenance Shop

NEW ZEALAND  
OWNED & OPERATED

Google Reviews  
5.0 ★★★★★

## BMW MOTORBIKES SERVICING & REPAIR

Specialising in servicing and repair of the BMW motorbike brand only. The BMW technicians waste no time when it comes to working on your motorbike repair and with no long booking delays, we will aim to have you back on the road sooner.

### ACCIDENT REPAIRS

Being officially recognized The Bike Maintenance Shop can repair your BMW motorbike on behalf of all major insurance companies and their partners.

### TYRE FITTING

We can take care of all of your tyre and tyre fitting requirements.

**CALL US NOW 09 818 5448**

021 128 5546  
contact@thebmshop.nz

Unit1, 2A Akatea Road, Glendene, Auckland  
www.thebmshop.nz

Like us on Facebook  
thebikemaintenanceshop

# Events Page -

[Click HERE](#)  
for latest details

## October 2023 - GS Rallye

North Island - 28<sup>th</sup>-29<sup>th</sup> October 2023

More details imminent...

---

## November 2023 - South Island RAG

South Island RAG - 24<sup>th</sup>-26<sup>th</sup> November

More details soon...

---

## January 2024 - AGM/National Rally

South Island AGM/Nat Rally - 19<sup>th</sup>-21<sup>st</sup> January 2024.

More details coming...

---

*Please, always check our [website](#) for the latest details.*



**ANCHOR INN MOTEL**  
KAIKOURA

**BOOKINGS ESSENTIAL**  
BOOK ONLINE

KAIKOURA'S SUPERB WATERFRONT LOCATION

WELL APPOINTED **FAMILY APARTMENTS** - One Bedroom Garden View (Sleeps 4); Two Bedroom Ocean View (Sleeps 4)

**STUDIOS** (Sleeps up to 2)  
Executive Ocean View with Spa; Superb Ocean View; Standard Garden View

**Reservations Freephone 0800 72 00 33**

208 Esplanade, Kaikoura | Ph: (03) 319 5426 | Email: [info@anchorinn.co.nz](mailto:info@anchorinn.co.nz)  
[www.anchorinn.co.nz](http://www.anchorinn.co.nz)

The Anchor Inn Motel is owned and run BMW Club member Paul Meikle #3311

Accreditation logos: QUAL MARK SILVER, TOURISM NEW ZEALAND, SAFE TRAVEL, WARRIOR BEACHES

# Area Report: Rangitikei Roundup

By Murray Petherick



## June 2023

For the monthly ride on Sunday 11th June I thought it was time we made another foray into the Wairarapa so mapped out a route that would have us gathering at the Backyard Café in Ashhurst before heading over the hill to Pongaroa for lunch.

The forecast was good but the ride from home to Ashhurst was cool, with the temperature hovering around 7°C and the heated grips on 3. With the added

complication of that leg of my ride heading (mostly) directly into the sun, I was quite pleased to get to Ashhurst and line up a coffee. Eight bods arrived to share the coffees, including Tim (not the 'tool man') Taylor from Wellington and new member Barry Stephenson from Dannevirke. Due to other constraints and commitments, Robin and Rob G would not be making the rest of the trip with us but I had the pleasure of handing Rob G his 10-year certificate and badge. "Has it really been that long?" he



Anne & Peter Tibbs

asked, with a bit of a wry grin.

After coffee and a chat six riders, no pillions this trip, headed over Saddle Road to Woodville and then on to Pongaroa. Fortunately, the heavy fog that Barry S had encountered around Woodville on his way to Ashhurst earlier in the morning had mostly dissipated and the temperature had also lifted a few degrees. Apart from a few patches of wet and/or mossy road in some of the shady areas the road conditions down through the Makuri Gorge and on to Pongaroa were generally pretty good and we made good time, arriving at the lunch

destination, the Pongaroa Pub, at midday.

A few minutes after we arrived Tibbs rode in on his new, lowered chariot, having apparently missed meeting up with us up near Pahiatua. He apparently started with a reasonable-sized group but, despite using the 'corner man' system he appeared to have lost a few of the group around the Wairarapa. It seemed to me, as we enjoyed our lunch, that another rider or two arrived on several different occasions, the last arriving just before we departed for our return trip! (Well, that's my take on it anyway, and I know better than to let the

Cont...

# Area Report: Rangitikei Roundup

By Murray Petherick



truth get in the way of a good story).

Tim left us at Pongaroa to head homewards and the five Rangitikei riders headed along Route 52, Pa Valley Road, Mangaone Valley Road and then Hamua Rongomai Road to SH2. When we stopped for a leg stretch at the SH2 junction we found we had an extra rider; one of Tibsy's group (apologies for not recalling his name) who had inadvertently picked the wrong ride leader! However no harm was done and he said he enjoyed the ride with us, then headed off towards Eketahuna.

On SH2 we headed northwards then turned off to Mangamaire heading for the Pahiatua Track. Barry S. left us at the Balance turnoff to head home towards Dannevirke and after a relatively slow trip over the Track (traffic issues), Peter and Robert J left us at Summerhill, leaving the Petherick brothers to return home to Levin to complete the trip.

Thanks to all for some good riding, good company and a good day out!

Murray #2690

## Avon City Motorcycles



The Ultimate Riding Machine



That's right! Present your BMWMCNZ Club membership card at Avon City Motorcycles and you'll receive a 10% discount on all service costs, parts and genuine BMW accessories.

### MAKE LIFE A RIDE



# Wellington: A Tribute to Ken Wilson

By Denis Hulston



**K**en died peacefully at home on 13<sup>th</sup> of June 2023, aged 75.

Our thoughts are with Shirley and their family.



Ken in Tierra del Fuego

I have fond memories of riding with Ken on our club rides. He had been a teacher or relieving school principal at several of the backcountry schools we passed in our travels – Alfredton in the Wairarapa and Matahiwi on the Whanganui River Road, for example. On a stop at Matahiwi, one of the local people serving coffee in the old school recognized him and went away to get her father whom Ken had taught years before.

Ken bought his first BMW, a 1200GS Helga, to circumnavigate Australia with his friend Dick Hubbard in 2012. This trip was a trial run for their later trip from Prahoe Bay in Alaska to Ushuala, Tierra Del Fuego in 2010 with another 1200GS Ebony.

Ken introduced me to his blogs, which make great reading and are still accessible. The Australian blog is <http://kenandhelga.blogspot.co.nz>

The Alaska to Tierra del Fuego blog is <http://ebonyandken.blogspot.com>

Ken was also a keen fly fisherman, so sometimes he would divert on our rides to have a brief fish in one of the rivers if conditions were right. I often think of him when I see trout in a river or a welcoming pool on our rides.

# Area Report: Wellington

By Denis Hulston



## Club Social Meet & Eat 12<sup>th</sup> June

Another good turnout, thirteen, for the monthly meet and meal at the Petone Club, moved to the second Monday because of the King's Birthday holiday with some competition to the chat from the karaoke singers. Thanks, Peter Nash for covering for me while I was away.

## Club Rides June 2023

We'd planned a month of Sunday rides, however, weather and some good competition from Mother's Day meant we only managed one Sunday ride and a midweek impromptu. However, we had some good turnouts and riding for those rides.

### Saturday 3<sup>rd</sup> June - Impromptu fine weather ride in the Wairarapa

Only three riders, Denis, Keith, Chester, but some great weather and riding. We met at BP Remutaka for the ride to Carterton for coffee warm up,, and then rode backroads from Carterton to avoid 80km limits and road works. Guess what - new speed signs and 80km restrictions on side roads devoid of traffic. However, a side trip

took us to explore East Taratahi access routes to the Ruamahanga river - nice summer picnic and fishing spots. Back to Masterton and then through Lees-Paraka to Wainuioru, and loop to Gladstone, Longbush and Martinborough for another coffee stop before heading over the Remutaka Hill back to Wellington.

### Wednesday 21<sup>st</sup> June -Horowhenua - Wairarapa impromptu ride

### Sunday 18<sup>th</sup> June Wellington potpourri ride was cancelled due to the weather.

We managed a fine weather circuit through Shannon, over the Pahiatua Track to Eketahuna for a lunch stop. Keith and Denis rode gravel Kopikopiki, Mangaraupiu, Nireaha to Eketahuna - good condition gravel, no dust after plenty of rain. Barry and Murray rode the loop back to Levin, Keith, Bob and Denis rode Opaki, Dreyers Rock to Martinborough. Keith was relieved to see the fuel station at Martinborough to cope with a fuel gauge showing minus kms. We also took the opportunity to look in on Bob's beautiful Rover car restorations before we headed back over the Remutaka Hill before dark. This was a great fine weather with lots of welcome sunshine after a cool start - a 385km ride.



Gravel ride, Kopikopiki, Mangaraupih Rds

# Area Report: Wellington

By Denis Hulston



Gravel ride - Mangarauphi River - pictured with Keith and Denis





# Area Report: Wellington

By Denis Hulston



## Riding the Hayabusa.



I have recently been in Japan again, not motorcycling, but travelling by train for nearly 2000km. A few years ago, I borrowed a Hayabusa motorcycle which my friend owned briefly. It was a fabulous straight-line acceleration and speed experience, although I was very much in love with my K1200S which I owned at the time so gave it back to him.

Riding the Hayabusa bullet train at 320km per hour was a great way to travel from Tokyo to Hokkaido, Japan's northern island. The ride includes 53km of undersea tunnel connecting Honshu and Hokkaido islands.

Train travel in Japan is simply amazing – a precisely designed and engineered solution to moving people around. Is it art or is it engineering?

It certainly is amazing!

Denis #3184



# Area Report: Top of the South/Te Tauihu

by Gretchen Holland



## Picton Picnic via Queen Charlotte Drive - Sunday 11<sup>th</sup> June.



Gosh, it's hard to keep these Top of the South BMW riders (although there were a few other brands out today) down. A 9.30am departure on a crisp, cold, frosty for some, the sunny morning saw a final turnout of 20 bikes. 4 bikes/6 riders from Marlborough probably set a record. We all met up in Havelock and filled Rays Place. The two women there did a great job keeping

the food and coffee coming. We rode through Queen Charlotte Drive to the Picton foreshore – for the guys from Nelson, a total 114kms into a low, sometimes blinding sun. There were only two sets of traffic lights this trip – in the past there have been about 10 sets. But there were still plenty of one-way areas. After a picnic lunch in the sun, next to the sea, we split into three groups –



# Area Report: Top of the South/Te Tauihu

by Gretchen Holland



Marlborough went home via the main road, seven went home to Nelson via Port Underwood (Rick says the views were spectacular) and Kaituna Track

gravel and the rest returned to Nelson via Queen Charlotte Drive again – more low level, sometimes blinding sun.

Gretchen #949

Riders were: Peter W, Rick, Anja, Lew, Hilary, Murray, Gretchen, Tony, Matthias, Peter & Irene, Ross, Peter & Sacha

Visitors: Lindsay, Annette, Ben, Julie, Gary, Chris.

Ride leader: Peter B, scribe Gretchen, photos Rick.



# Area Report: Canterbury

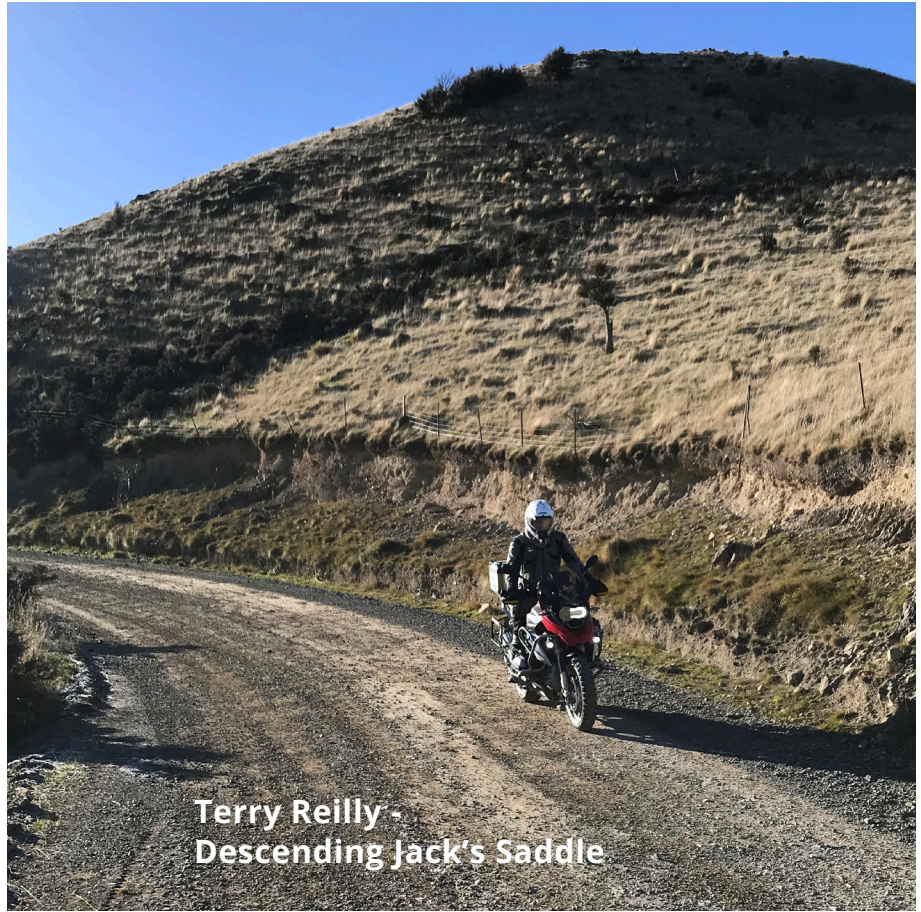
by Ralph Moore



## Ride To Lake Sumner. June 2023

Riding in winter can be very rewarding. This certainly was the case recently, when a group of us headed into the Lake Sumner area for a day ride. After meeting at Ravenswood BP, on a dull low cloud sort of day, we rode north towards Hawarden. By the time we turned off SH1, we were into clear skies and warm sunshine which stayed with us for the day. We bypassed Hawarden, opting instead for a couple of gravel roads through to Masons Flat and onto Lake Sumner Road.

As we wound through the hills following the Hurunui River towards its source, the temperature dropped to just 2 degrees in every shaded valley, and there was plenty of evidence of recent snow and plenty of hoar frosts.



Terry Reilly -  
Descending Jack's Saddle



▲ Ralph Moore surrounded by hoar frost

### ▼ Suddenly in a whiteout



# Area Report: Canterbury

by Ralph Moore



Lunch at Loch Katrine

We were soon back out into the wide sunny valley that lead us to Lake Taylor and the end of the road. From here on, we followed the rougher 4wd track around the Lake. This track has many large puddles and wallows and streams to negotiate. Eventually, we arrived at Loch Katrine and found a sunny picnic spot to have our lunch.



Beyond Loch Katrine, the track gets rougher and you soon come to a locked gate barring your way about 1km short of Lake Sumner. So we headed back along Lake Sumner Road through the sunshine and popping in and out of shaded Gullies.



▲ In the shade and 2 degrees again

Permafrost ►

It was mostly sunny riding all the way out. Once we got close to Masons Flat, we veered off and rode through Pyramid Valley to hit the main highway and head for home. Thanks to the brave souls who ventured out on this winter's day.

Ralph #3082





**BMW  
MOTORRAD**

↑ Terminal →

G 310 R

**4.95% FINANCE  
OFFER\***

**MAKE LIFE A RIDE**

\*Fixed interest rate of 4.95% per annum available on BMW Finance 24 month loan term for new G 310 R models purchased at RRP from 01/06/2023 to 31/07/2023 or while stocks last. Payments of 1/3 deposit, 1/3 payment in month 12 and final 1/3 payable in month 24. An establishment fee of \$275, PPSR of \$10.35, dealer origination fee of \$250 and on road costs of \$590 apply. BMW Financial Services Limited terms, conditions and standard lending criteria apply.

**Authorised BMW  
Motorrad Dealers**

**Avon City Motorcycles**  
13 Epsom Road  
Sockburn, Christchurch  
(03) 341-3490  
smcintosh@acford.co.nz  
avoncitymotorcycles.co.nz

**Boyd Motorcycles**  
403 Te Rapa Road  
Waikato, Hamilton  
(07) 850-4522  
motorcyclesales@boyds.co.nz  
boydmotorcycles.co.nz

**Continental Motorrad**  
45-65 Wairau Road  
Wairau Valley,  
North Shore, Auckland  
021 406 326  
sales@continentalmotorrad.co.nz

**Experience Motorcycles**  
625 New North Road  
Kingsland, Auckland  
(09) 845-5950  
sales@experiencemotorcycles.co.nz  
experiencemotorcycles.co.nz

**McIver & Veitch**  
112 Crawford Street  
Dunedin  
(03) 477-0236  
sales@mciverandveitch.co.nz  
mciverandveitch.co.nz

**Motomart**  
7 Rutherford Street  
Lower Hutt, Wellington  
(04) 589-5106  
lan@motomart.co.nz  
motomart.co.nz

**Mount Motorcycles**  
23 Totara Street  
Mount Maunganui, Tauranga  
(07) 575-4190  
sales@mountmotorcycles.co.nz  
mountmotorcycles.co.nz

**BMW Motorrad celebrates one millionth GS  
with boxer engine.**

**World premiere of the new BMW R 1300 GS on  
28 September 2023 at BMW Motorrad Welt in Berlin.**



**Munich/Berlin.** Today, on 21 June 2023, the 1,000,000th GS equipped with a boxer engine rolled off the production line at the BMW Motorrad plant in Berlin-Spandau - a BMW R 1250 GS. BMW motorcycles have been manufactured in Berlin since 1969 and the BMW Motorrad GS models with boxer engines since 1980. Elemental, authentic motorcycles, which possess incomparable all-round qualities have spurred on countless motorbike enthusiasts on trips to distant countries, spectacular adventure trips and expeditions to the remotest regions of our planet over the past decades. The latest edition of the now legendary BMW GS with boxer engine - the R 1300 GS - will be presented on 28 September 2023 at the grand opening of the new BMW Motorrad Welt in Berlin.

**The BMW GS with boxer engine: The legendary combination of road, off-road and long-haul expertise.**

Dr. Markus Schramm, Head of BMW Motorrad: "With the R 80 G/S and its unique combination of on-road and off-road suitability, everyday qualities and long-distance touring abilities, BMW Motorrad created the new motorcycle genre of touring enduros in 1980.

Cont...

The BMW GS with boxer engine became an icon, which achieved global success in this segment. What is more: The BMW GS became a legend and at the same time an indispensable cornerstone in the BMW Motorrad model range. Its outstanding talents, such as dynamic riding performance, brawny off-road qualities, superior long-distance comfort and enormous robustness, have since been continuously developed by BMW Motorrad and transferred to other BMW Motorrad model series with great success. I am therefore very pleased that today, and especially in our “100 Years of BMW Motorrad” anniversary year, we are able to contribute a major milestone to the corporate history of the BMW Group with the one millionth BMW GS motorbike with a boxer engine. I am equally pleased that the unique history of BMW Motorrad models with boxer engines will soon be supplemented by an exciting chapter with numerous innovations with the new R 1300 GS.”

The one millionth BMW GS with a boxer engine is an R 1250 GS in Triple Black Style and was duly celebrated today, 21 June 2023, during a works meeting at the BMW Motorrad plant in Berlin-Spandau.







## **The new BMW R 1300 GS: Premiere at the opening ceremony of BMW Motorrad Welt Berlin on 28 September 2023.**

The celebrations marking the 100th anniversary of BMW Motorrad are continuing at pace. After the big party at the BMW Motorrad Days, where thousands of motorcycle fans from all over the world are expected from 7 to 9 July 2023, BMW Motorrad Welt will officially open its doors on 28 September. In the new "heart of the brand" - located directly next to the BMW Motorrad plant site in Berlin-Spandau - the eagerly awaited new BMW R 1300 GS will be presented at an exclusive opening event. Interested fans will have the opportunity to follow the opening ceremony via livestream on the BMW Group and BMW Motorrad social media channels. From 30 September 2023, BMW Motorrad Welt in Berlin will then be open to all visitors.

## **The BMW R 80 G/S: Initial spark for a new motorcycle segment.**

In autumn 1980 BMW Motorrad presented the R 80 G/S, a motorcycle which combined two very special areas of riding for the first time: Off-road and on-road. What began with 798 cubic centimetres of displacement and 50 hp has developed over more than four decades into a fascinating high-tech touring enduro of the calibre of the current BMW R 1250 GS. Complemented by state-of-the-art chassis technology and electronic control systems such as ABS, traction control, engine drag torque control, semi-active suspension and a great deal more. It is also thanks to this ongoing and consistent advancement that the BMW GS models with boxer engine have advanced to become the most sought-after touring enduros in the world to this day.

**BMW Motorrad model update measures for model year 2024. New attractive color and equipment variants as well as option 719 packages.**

---



**Munich.** Various model refinement measures will once again be included in the BMW Motorrad program for model year 2024. The models can be ordered in the new configurations from all BMW Motorrad partners from August 2024.

**BMW G 310 R.**

- Version Sport: New color Racingblue met. Polarwhite uni / Racingblue met. no longer available.
- Version Sport: Front Wheel Cover, Radiator Cover, Fuel Tank Cover, Rear Cover Racingblue met. / Front Cover, Badge Holder, Polarwhite uni / Main-/Rearframe Racingred uni / Red Wheels.
- Version Passion: New color Granitgrey met. Racingred uni no longer available.
- Version Passion: Front Cover, Badge Holder Granitgrey met. / Front Wheel Cover, Radiator Cover, Fuel Tank Cover Cosmic Black uni / Main-/Rearframe Racingred uni / Red Wheels.



## **BMW G 310 GS.**

- Version Rallye: new color Racingred uni. Kalamata-darkgold met. no longer available. Front Wheel Cover, Main-/Rearframe Middle Fuel Tank Cover Racingred uni Fuel Tank Cover Le/Ri Black uni mat.

## **BMW G 310 RR.**

- Version Basic: Cosmic Black uni 2. Cosmic Black uni no longer available.
- New: Main-/Rearframe in Racingred uni, new large „RR“TapeStyle.

## **BMW F 900 R.**

- Version Basic: New color Racingred uni. Blackstorm met. no longer available.
- Version Triple Black: New color Blackstorm met 2. Style Exclusive / Bluestone met. no longer available.
- Version Version Basic and Triple Black: Side Panels Blackstorm met. / Front Wheel Cover, Middle Cover Fuel Tank Mineralgrey met. mat / Seat Black / Engine Avus Black met. mat / Wheels Night Black uni / Fork Tube Black.
- Version Sport: New color Lightwhite uni. Lightwhite uni / Racingblue met. no longer available.
- Version Sport: Front Wheel Cover, Side Panels Lightwhite uni / Middle Cover Fuel Tank, Radiator Cover, Engine Spoiler Racingblue met. / Seat Black / Engine Avus Black met. mat / Wheels Night Black uni / Fork Tube Gold.

Cont...

## **BMW F 900 XR.**

- Version Basic: Lightwhite uni 2. Lightwhite uni no longer available.
- Version Triple Black: Blackstorm met 2. Black: Blackstorm met. No longer available.
- Version Sport: Racingblue met 2. Racingblue met. No longer available.
- New: Front Wheel Cover, Side Panels Lightwhite uni Radiator-/Middle Cover Fuel Tank Mineralgrey met. mat / Engine Avus Black met. mat Wheels Night Black uni / Fork Tube Black

## **BMW R 1250 RT.**

- Version Basic: new color Alpine White uni 3 with large new tape „RT“ on side panels. Lightwhite uni no longer available.
- Version Sport: Racingblue met 2 with new Tape / Knee Cover, Front Panel, Middle Fuel Tank Cover mineralgrey met. Racingblue met. No longer available.

## **BMW R 1250 GS Adventure.**

- New color Racingblue met., Rallye Lightwhite uni no longer (all available).
- Front Wheel Cover, Fuel Tank Cover Racingblue met. / Golden Wheels.





## **BMW K 1600 GT and K 1600 GTL.**

### **BMW R 18 / R 18 Classic.**

- New color Blackstorm met. / Vitage (Additional). Marsred met. no longer available.
- Front/Rear Wheel Cover, Fuel Tank, Sidepanels Blackstorm met. / Seat Black / Powertrain Silver / Exhaust Fishtail Chrome.
- Option 719 "OLIVINE": New color Velvet Green met., Mineral White met. no longer available.
- Option 719 "OLIVINE" incl. Option 719 Seat Black incl. Option 719 Wheels Icon incl. Option 719 Design Package Aero Black Option 719 Fuel Tank Badge, Badges Airbox R18 with Option 719 Black Powertrain.
- Only R 18 Classic: Option 719 "MOONSTONE" new color Mineral White met. incl. Option 719 Seat Black incl. Option 719 Wheels Aero incl. Option 719 Design Package Aero Option 719 Fuel Tank Badge, Badges Airbox R18 with Option 719.

### **BMW R 18 B**

- New color Racingblue met. (Additional).
- Option 719 "BLACK PEARL": New color Blackstorm met. 2. Option 719 Galaxy Dust met. / Titan Silver met. and Mineral White met. no longer available.
- Option 719 "BLACK PEARL": incl. Option 719 Design Package Aero Black Option 719 Fuel Fuel Tank Badge, Lettering Case Clip incl. OE Blacked-Out / Exhaust Black Chrom Black Powertrain.

### **BMW C 400 GT.**

### **BMW CE 04.**

[CLICK HERE](#) to read the full press release and changes for the models showing the title only.

# Plastic free July - Lets each do our bit 😊



## Take the challenges

Ready to take the Plastic Free July challenge? Participants tell us that the tips and tricks in our weekly emails during July help them to keep motivated during the challenge. People also enjoy reading stories from our participants and other news from our global movement. Enter your details here to get the latest plastic-free ideas (don't worry – we won't spam you or pass your email address onto anyone else). Together we can make a difference and be a part of the solution.

### About the challenge

Plastic Free July provides resources and ideas to help you (and millions of others around the world) reduce single-use plastic waste everyday at home, work, school, and even at your local café.



Our movement has inspired 100+ million participants in 190 countries. You making a small change will collectively make a massive difference to our communities. You can choose to refuse single-use plastics in July (and beyond!). Best of all, being part of Plastic Free July will help you to find great alternatives that can become new habits forever.

[Take the challenge >](#)

Not sure what plastics you can change?

[Take the Pesky Plastics Quiz >](#)





LIKE YOU, ESCAPING THE ORDINARY IS IN OUR BLOOD



We design insurance for those who live for the ride.

Nothing comes close to the journey. All that matters is being connected to the road or trail, and the bike. Some people don't get it. We do. Two, three or four wheels... whatever your bike, with Star Motorcycle, we'll help you protect your means of escape.

Escape THE ORDINARY

Call: 0800 250 600

Visit: starinsure.co.nz





## Psst... Did you see?



MCN recently updated (June 2023) their article on the much talked about R 1300 GS - here's a snippet but [Click HERE](#) for their full article.

\*All images and text taken directly from their website.

### ***"BMW's big GS fightback: Radical all-new 2024 R1300GS spied testing on the road in production-ready form"***

*"Fresh spy shots reveal that we'll be seeing a radically updated flagship BMW GS adventure bike next year, as the Bavarian brand says auf Wiedersehen to the model's tubular steel frame for the first time in its history.*

*First seen in spy shots back in March, 2022, the new R1300GS is expected to be revealed later this year as a 2024 model, and the bike was spotted last week in Germany being put through its paces by BMW test riders in apparently production-ready form.*

*Appearing to have lost a lot of its rugged, bulky styling, the new GS looks much sleeker than before, with a dramatic narrowing of its 'shoulders' when viewed from the front, and overall the bodywork looks much more integrated – following a direction led by its key rival, Ducati's Multistrada V4."*



*"The bikes in these shots are also shod with spoked wheels which appear to be the same tubeless 19in front, 17in rear as fitted to the current BMW R1250GS model, with a cast wheel option (as seen in earlier teaser shots) also certain to be available."*



## The frame game

*“Despite wearing a blacked-out stealth disguise, it’s clear to see that BMW has now ditched the tubular steel frame that’s been used on every boxer version of the GS since the model’s inception in 1980. In its place is what appears to be a two-part cast aluminium frame and rear sub-frame that uses the motor as a stressed member.*

*This new direction is most likely an attempt to save weight, mitigating any potential increases brought about by future Euro regulations which will require increases to noise attenuation and further reductions in emissions.”*



*“Most recently, we’ve seen this design move with the 2021 Ducati Monster, which now has a cast alloy frame that is 4.5kg lighter than the steel trellis it replaced. There’s also a completely new style of centre stand visible, which appears to include a swing-out foot lever, ensuring a more compact profile when folded away.”*



Please read MCN’s full article and see more images by [Clicking HERE](#)



Must check my membership  
card with BMWMC

Expiry date looms and don't

[membership@bmwmc.nz](mailto:membership@bmwmc.nz)



BMWMC

Remember to write a note  
about my travels and  
email it to

[editor@bmwmc.nz](mailto:editor@bmwmc.nz)



Plastic free July

Checkout their website  
and take the quiz...



# BMW Motorcycle Club of Aotearoa New Zealand - Risk Management Plan

The BMW Motorcycle Club of Aotearoa New Zealand is an organisation whose members join together for rides to nominated venues and for other social occasions. The organiser nominates the destination and regrouping stages along the way, but otherwise has no influence upon the way that riders behave on the road. There is no element of organised competition in the rides.

## Riding Code:

1. All Club members on Club rides shall do so as individuals responsible for their own safety and shall take into account the safety of others they encounter on the ride.
2. Club members are responsible for ensuring that their motorcycles are in a safe and legal condition, the minimum being to Warrant of Fitness standards.
3. Riders, Pillions and sidecar passengers where required, shall have as a minimum standard New Zealand Approved Motorcycle Helmets, and stout footwear, gloves and clothing that will be capable of protecting their body in the event of a mishap.

4. Club Members are to go to the aid of any others suffering a mishap.
5. Rider organisers shall nominate the destination for the ride as well as any regrouping locations or other stops. The organiser is not responsible for the other riders' behaviour or safety.
6. Riders shall ride at a speed and in a way that is comfortable for them. Do not ride outside your personal comfort envelope.
7. If a rider is unfamiliar with the route, they shall arrange to follow another rider who does know the way and who travels at a comfortable pace.
8. Riders who decide to travel as a group shall adopt a staggered riding formation such that there is an accepted following distance to the rider immediately in front. A reasonable following distance is indicated by a time of two seconds between riders for dry conditions and longer for inclement conditions and on loose surfaces.
9. The Ride Organiser and or the Club are not responsible for the participants' safety, and all participants participate at their own risk. All participants are aware that they are travelling on open public roads and are responsible for their own safety and compliance with the Road Rules and Laws.



The advertisement for Arcadia Motel Christchurch features a large photo of the motel building with a sign that reads "ARCADIA MOTEL CHRISTCHURCH Comfortable, spacious affordable accommodation". To the right, there are three smaller inset photos showing the interior of a room, including a bed with a red coverlet, a living area with a blue sofa, and an outdoor view of the motel building.

**FREEPHONE 0800 272 23 42**

564 Ferry Road, Woolston, [www.arcadiamotel.co.nz](http://www.arcadiamotel.co.nz)

Geoff Lester 027 285 1293

# Marketplace

To advertise, please email  
newsletter@bmwmc.nz

Marketplace is a service for members of BMWMC, NZ.

Advertisements will be accepted from members, commercial traders and non-members when it is considered in our members' interest to do so. No charge is made for Marketplace advertising. The Editor and Executive reserve the right to reject or modify any advertisement considered inappropriate and take no responsibility for errors or omissions, the quality of items, claims made, or for any transactions that ensue.

Advertisements run for approx. 3months from the date first published unless otherwise arranged with the Editor.





BMW Motorrad

# MAKE LIFE A RIDE.

**motomart**

**Service Department:**

Dave: 04 589 5106 ☒

**Sales Executives:**

Kent: 021 445 787 ☒

Gareth: 022 333 6473 ☒

**Dealer Principal:**

Ian: [ian@motomart.co.nz](mailto:ian@motomart.co.nz) ☒



Proudly servicing the Lower North Island with  
Genuine Parts, Genuine Accessories and  
Genuine Service.

**Address:**

7 Rutherford Street  
Lower Hutt  
Wellington, 5013

**Phone:**

04 589 5106

**Web:**

[www.motomart.co.nz](http://www.motomart.co.nz)



## Area Representatives



**NORTHLAND**

Ian Macartney  
027 281 0242  
[northland@bmwmc.nz](mailto:northland@bmwmc.nz)

**TARANAKI**

Wayne Higgins  
027 506 6488  
[taranaki@bmwmc.nz](mailto:taranaki@bmwmc.nz)

**WELLINGTON**

Denis Hulston  
027 443 3604  
[wellington@bmwmc.nz](mailto:wellington@bmwmc.nz)

**AUCKLAND**

Stephen Parkinson  
021 989 092  
[auckland@bmwmc.nz](mailto:auckland@bmwmc.nz)

**RANGITIKEI**

Murray Petherick  
027 433 6657  
[rangitikei@bmwmc.nz](mailto:rangitikei@bmwmc.nz)

**TOP OF THE SOUTH**

Peter Brandon  
021 842 291  
[topofthesouth@bmwmc.nz](mailto:topofthesouth@bmwmc.nz)

**WAIKATO**

Paul Quilter  
07 859 2512  
[waikato@bmwmc.nz](mailto:waikato@bmwmc.nz)

**EAST COAST**

please contact  
027 281 0242  
[eastcoast@bmwmc.nz](mailto:eastcoast@bmwmc.nz)

**CANTERBURY**

Ralph Moore  
027 284 7508  
[canterbury@bmwmc.nz](mailto:canterbury@bmwmc.nz)

**BAY OF PLENTY**

Alan Belworthy  
027 496 0748  
[bayofplenty@bmwmc.nz](mailto:bayofplenty@bmwmc.nz)

**WAIRARAPA**

Peter Tibbs (Aka Tibsy)  
027 335 6843  
[wairarapa@bmwmc.nz](mailto:wairarapa@bmwmc.nz)

**SOUTHERN**

Tharon Knoetze  
021 034 1760  
[southern@bmwmc.nz](mailto:southern@bmwmc.nz)