

BMW Motorcycle Club New Zealand

NEWSLETTER

Official BMW Club - *Established* 1975

NOVEMBER 2022



BMW Motorcycle Club
Aotearoa New Zealand



MEMBER OF THE INTERNATIONAL COUNCIL OF BMW CLUBS

Motorcycle insurance that leads the pack

Insurance from the people who revolutionised motorcycle insurance.

Since 1989 the team at Star Insure has designed extraordinary, custom policies for New Zealand motorcycle riders. We lead the way because we innovate and engage in deeper levels of insurance analysis to craft highly-tuned, custom insurance policies that protect BMW riders in the real world.

It's why Kiwi riders choose Star Insure.

Get a quote: starinsure.co.nz



Promo code: **BMWSTAR**



Visit starinsure.co.nz

Call **0800 250 600**



EDITORIAL COPY TO:

Colin Gates
newsletter@bmwmc.nz

OTHER CORRESPONDENCE TO

The Secretary
BMWMCNZ
PO Box 109-245
Newmarket
Auckland 1149
New Zealand

PRESIDENT

Chris Souness
021 494 952
president@bmwmc.nz

VICE PRESIDENT

Stephen Parkinson
021 989 092
vicepresident@bmwmc.nz

SECRETARY

David Fish
021 927 901
secretary@bmwmc.nz

TREASURER

Colin Gates
027 9222 350
treasurer@bmwmc.nz

MEMBERSHIP SECRETARY

Barry Petherick
027 341 6949
membership@bmwmc.nz

AREA REP LIAISON

arl@bmwmc.nz

BMWMC GEAR

shop@bmwmc.nz

Thank you for your
feedback and stories
feedback@bmwmc.nz

Contents

- 3 [New Members \(below\)](#)
- 5 [President's Podium](#)
- 7 [Area Reports starts](#)
- 26 [Pin Board](#)
- 29 [Marketplace](#)
- 30 [Area Representatives contact details](#)

Welcome to our New Members

We hope you'll take part in many of your local and national events. Your Area Rep will be pleased to introduce you to other members in your area. Our monthly newsletter is an open forum for all members. If you fancy a story and/or photos published about your ride, the rebuild of your bike, a book you might have read or a movie you have seen lately, or just want to get something off your chest about how the club is going, then please email/phone the Editor no later than the 25th day of the month preceding publication.

We welcome all contributions.

Welcome to:

Malcolm
Colin
Stephen
Bryan
Jan Christian
Gary
Riaan
William
Pat
Bruce
Anurat
Grant
Kesta
Andy
George
Stephen

**AISH
BUDD
BURGESS
CAMPBELL
CANAPI
CLARK
DU PLESSIS
HAMILTON
HOARE
IRWIN
JINAPUN
LOVELOCK
MCLAUGHLAN
MONTGOMERY
SWANEPOEL
WILSON**

**CAMBRIDGE
TAURANGA
AUCKLAND
OPUNAKE
AUCKLAND
PARAPARAUMU
PUKEKOHE
CARTERTON
MOUNT MAUNGANUI
TAURANGA
AUCKLAND
GISBORNE
KAIAPOI
GISBORNE
WHANGAREI
WAVERLEY**

Please Note: Any material intended for publication in the newsletter should reach the Editor no later than the 25th day of the month preceding publication. The Newsletter is an open forum for all members. Views expressed by members may not necessarily represent the views of BMWMC. Publication of all material is subject to the Editor's discretion. Photos are courtesy of article authors and/or will be credited when known, unless otherwise specified.

Cover picture: BMW GS Rallye

Photo by: BMW

Date: September 2022

MCIVER & VEITCH

THE SOUTH'S AUTHORISED BMW MOTORRAD DEALER



**MCIVER
&
VEITCH**



BMW Motorrad

ESTABLISHED
1932

112 CRAWFORD STREET, DUNEDIN / PH: 03 477 0236

www.mciverandveitch.co.nz



President's Podium

Chris Souness



BMW Motorcycle Club
Aotearoa New Zealand



October 2022

Well, it's great to see that we've now successfully completed the first major club event for this coming summer season. The GS Rally was held at Lakes Ranch in Rotorua late in October and by all accounts, it was a resounding success. Unfortunately, due to other commitments, I was unable to make it but all the feedback I've had from those that attended has been really positive. It's never easy to put these events together and there is a huge amount of work that goes on behind the scenes that most attendees are not aware of. A BIG thank you to Stephen and Sue Parkinson and the Kiwi rider team for all their hard work and effort that made this event such a success.

This was the first time Lakes Ranch Rotorua has hosted this type of event and with its excellent accommodation and catering facilities, we are sure it will be the location for many others in the future. I for one, won't be missing out again.

The weekend of the 18-20th of November is the date for our South Island Rag Rally, which is being held in Geraldine. Over recent days I've been thinking about the trip and trying to run over in my mind what I need to do to get the bike and gear prepped for the event. I am really looking forward to making the trip south to Geraldine and can't wait to catch up with everyone there.

I'm riding down from Wellington with a couple of others who will have already travelled a significant way from Northland just to get to Wellington. Add to that the ferry trip the South Island leg and the return trip home and they will have clocked up some serious K's. I have to say that being located in Wellington does have its benefits when travelling to either end of the country.

The distances travelled by some to attend our club events are significant and I think that's a reflection of the fun, enjoyment and camaraderie that our regular events generate. The opportunity to reconnect with old and new friends and experience the wonderful countryside we have in New Zealand is priceless.

All the hard work is starting to come together for the AGM and Annual Rally in Tauranga later in January 2023. The BOP organising committee have been working hard to plan the event, and the weekend is shaping up to be excellent. Further details are in the newsletter along with the registration form and a link to book accommodation at the Trinity Wharf Hotel in Tauranga. If you are planning on attending and haven't already booked, please get onto this quickly as the hotel is filling up fast.

All the best and safe riding everyone.



BMW Motorcycle Club of Aotearoa New Zealand - Risk Management Plan

The BMW Motorcycle Club of Aotearoa New Zealand is an organisation whose members join together for rides to nominated venues and for other social occasions. The organiser nominates the destination and regrouping stages along the way, but otherwise has no influence upon the way that riders behave on the road. There is no element of organised competition in the rides.

Riding Code:

1. All Club members on Club rides shall do so as individuals responsible for their own safety and shall take into account the safety of others they encounter on the ride.
2. Club members are responsible for ensuring that their motorcycles are in a safe and legal condition, the minimum being to Warrant of Fitness standards.
3. Riders, Pillion and sidecar passengers where required, shall have as a minimum standard New Zealand Approved Motorcycle Helmets, and stout footwear, gloves and clothing that will be capable of protecting their body in the event of a mishap.
4. Club Members are to go to the aid of any others suffering a mishap.
5. Rider organisers shall nominate the destination for the ride

as well as any regrouping locations or other stops. The organiser is not responsible for the other riders' behaviour or safety.

6. Riders shall ride at a speed and in a way that is comfortable for them. Do not ride outside your personal comfort envelope.
7. If a rider is unfamiliar with the route, they shall arrange to follow another rider who does know the way and who travels at a comfortable pace.
8. Riders who decide to travel as a group shall adopt a staggered riding formation such that there is an accepted following distance to the rider immediately in front. A reasonable following distance is indicated by a time of two seconds between riders for dry conditions and longer for inclement conditions and on loose surfaces.
9. The Ride Organiser and or the Club are not responsible for the participants' safety, and all participants participate at their own risk. All participants are aware that they are travelling on open public roads and are responsible for their own safety and compliance with the Road Rules and Laws.



SPRING SPECIAL 20% OFF PICKUP SERVICE

When you book in a BMW motorbike service with us

- Applies **September, October, November**
- Quote coupon code: **Spring Special**
- **Auckland only**

- ✓ We only do BMW
- ✓ Specialists in our field – you can't beat knowledge
- ✓ Many years of technician experience on the BMW products
- ✓ Bike moving service available within the Auckland area

CALL US NOW 09 818 5448



021 128 5546
contact@thebmshop.nz

2A Akatea Road, Glendene, Auckland
www.thebmshop.nz

Like us on
Facebook

thebikemaintenanceshop

Area Report: Waikato

By Chris Townson



8th October

On Saturday 8th October, members Chris Townson and Matthew Blann set off on an 800km round trip as training for the NI1600 next year. We left Cambridge at 6:45 am and headed south, stopping briefly in Te Kuiti to see the Sir Colin Meads statue, then on to the Park Hotel in Ruapehu for a photo, and then onwards to Ohakune for a fuel stop. We stopped for lunch in Stratford after travelling via Whanganui and Patea. We rode to Whangamomona Hotel from Stratford for another quick photo before heading homeward via Whakamaru and Tokoroa. We arrived back in Cambridge at 6:25 pm, having ridden 824 km, in just under 12 hours. By coincidence, the NI1600 was being held out of Ohakune the same day so there were plenty of other riders on the road. It was a good ride and it's nice to know that we can do at least half the challenge within 12 hours....even if we did arrive home with monkey butt!

Chris Townson # 3983

And, on the very same day, Chris Townson was photographing Mt Ruapehu we were too, as we took a quick weekend trip from Cambridge to Wellington to attend WOW. We tracked down via Ohakune then took a right just before Waiouru to travel Turakina Valley Road. What a great road. Loads of slips partly cleared and km of great gravel road. The weather was cool but clear so I got to try out my new heated underthings from warmnsafe. We stayed in Paraparaumu and took the train into town. On Monday we headed back via Tangimoana, Fordell and onto Mangamahu Rd, then Whangaehu Valley Rd, Burma Hill Rd, and out to Ohakune. There were lots of new gravel patches and several slips under repair but a fabulous day's ride.

Graeme and Sue Duncan

Park Hotel Ruapehu



Pine Man in Tokoroa

Area Report: Waikato

By Chris Townson



Mt Ruapehu, by Chris & Sue Duncan

17th October

On Thursday the Waikato chapter had its monthly dinner, which was held at Oasis Café in Cambridge. This month's turnout was a fantastic with 15 members gathering for a meal and great conversation. Next month's dinner will be held on Thursday 17th November at the Horse & Jockey in Matamata at 6:30 pm.



Area Report: Waikato

By Chris Townson



23rd October



L to R: Mimi, John, Joy, Paul, Phil, Sue, Graeme, Chris (taking the photo)

Sunday 23rd October eight members went on a gravel ride to Port Waikato the weather was perfect for a day on the bike. We met at Ngaruawahia at 10:15 am and headed northwest on the Te Akau Coast road. There was a mixture of road and gravel bikes so some of us hit the gravel and the others

took the seal and we all met up at the Nikau Café and Caves for lunch. After lunch, we rode over Klondyke Road and followed the gravel all the way down to the back of Huntly and then on to Taupiri where we all departed our separate ways to home.

Chris Townson # 3983



Nikau Café and Caves

Klondyke Road



AGM Rally 2023

BMWMC National Rally 20-21-22 January 2023



It's time to get your early 2023 plans in place. The BMWMC National Rally and AGM is scheduled for 20-22 January 2023. Dig out your speedos and get your string bikini's ironed as the sun will be shining and the water at our magnificent beaches will be warm.

The event hub is the truly superb Trinity Wharf hotel which is a premium location in the Bay of Plenty. A short walk to downtown Tauranga with its many, many excellent cafés, bars and restaurants. On-site, the motorcycle parking is secure and undercover (first in first served) and we have buses at the door for those that want to venture around the city sights and do a little shopping...

Accommodation is available for a range of tastes, from rooms of more modest proportions to water-view suites at a discount to the normal rack rate – using the code BMWMC2023.

Should we sell out there is other accommodation a short distance away (Durham Court Motor Inn, Hotel on Devonport and Harbour City Motor Inn – all great places to stay but too small for a group such as ours. – But remember this is summer peak season and Bay of Plenty is full at this time of year and not cheap!

Friday afternoon we encourage you to visit our outstanding local BMW dealer – Mount Motorcycles on Totara St at the Mount and chat to Ray and the team there – there could be a BBQ 'snag n bread' to keep you going while spending a few dollars or even updating the collection – they are always ready with a great deal as many of you know.

Later Friday we will officially meet with tapas and drinks (drinks pyo) in the lobby lounge overlooking the beautiful Tauranga inner harbour.

AGM Rally 2023

There's a ride program option to suit most riders and motorcycles. The BOP team are really keen to see some of those older BMWs and road-orientated motorcycles out in force for the weekend. So, three rides over the weekend, Saturday offers a choice of two rides aimed at those who like it dusty and/or a fuller pace and Sunday for a gentler person ride.



Of the Saturday TS rides one will be managed by Ian Sowden – and for this you will need to bring your GPS skills (and have a clear head Friday night to plan your route).. the other will be led by Grant Aislabie and that will only require a full tank of fuel and then the ability to follow the leader.

The GS dusty rides will be capably led by both Alan Belworthy and John Rutherford – so expect some 'interesting' tracks.

In any event, you will all be back at 4.00 pm in time to scrub up and have a beer before the AGM. Dinner will follow.

Sunday will see an easier start time of 10.00 am - a scenic TS ride with a few extra's thrown in...

Get those bookings made! More next month...

The BOP 2023 Rally team

Area Report: East Coast

by John Wuts



Leonie, Walter, Stella, Tony, Maria, John F, Warren, Robyn, Carole, Robert and Pam. John W (photographer).

We had our usual last Tuesday of the month dinner at Gengy's in Hastings. It is always good to hear from members what they have been up to or what they are planning to do in the coming weeks, e.g. attending the South Island Rag Rally or the Isle of Man races, etc.

John Wuts

ANCHOR INN MOTEL
KAIKOURA

**BOOKINGS
ESSENTIAL
BOOK ONLINE**

KAIKOURA'S SUPERB WATERFRONT LOCATION

WELL APPOINTED **FAMILY APARTMENTS** - One Bedroom
Garden View (Sleeps 4); Two Bedroom Ocean View (Sleeps 4)

STUDIOS (Sleeps up to 2)
Executive Ocean View with Spa; Superb Ocean View; Standard Garden View

Reservations Freephone 0800 72 00 33

208 Esplanade, Kaikoura | Ph: (03) 319 5426 | Email: info@anchorinn.co.nz
www.anchorinn.co.nz



The Anchor Inn Motel is owned and run BMW Club member
Paul Meilke #3311

Area Report: Rangitikei Roundup

By Murray Petherick



Although the weather has generally improved during the last few weeks there still remains a bit of luck attached to getting good weather for scheduled riding days. Hopefully, things will continue to be more settled as we head towards summer.

Our second 'scheduled' event for September was the monthly brunch gathering at the Woolshed Café in Sanson, held on Sunday 25th. The weather on the day was 'reasonable' and the gathering turned out to be one of the best attended in recent times with a total of 16 members and partners/spouses turning up to share the company and the gossip.

The October monthly ride on Sunday 9th saw a small turnout of only 4 riders and no pillions. Excuses and reasons for non-participation included 'Going to Mt Maunganui to trade up to a new bike'; 'Resting up recovering from eye cataract surgery'; and 'Off to the bach at the lake for the weekend'. Presumably, others also had good reasons, such as 'got to mow the lawns, or were otherwise simply 'missing in action'.

We met for coffee at the Backyard Café in Ashhurst and then, taking up on a suggestion from Don, we went to visit a private motoring 'museum' situated on the outskirts of Ashhurst, simply called The Black Shed. This is a private collection of motoring memorabilia, housed in a large, purpose-built barn, and boasts a huge collection of vehicle number/registration plates, mostly representing many years of motoring in NZ. Also on display are a small number of large American cars, a partly restored truck, and an extensive collection of motoring-related signage branded fuel and oil cans, and related



articles. Many of the items on display brought back memories from well over half a century ago! The attached pics show a couple of the vehicles in the collection.

From the museum we headed up the Pohangina Valley, which is a good ride that we haven't done for a while, and on to Apiti for lunch at the Tavern. The Tavern is obviously a popular weekend destination and while we were there another 10 or 12 motorbikes of various makes and models, came and went, along with at least as many cars and other vehicles.

Following lunch, we generally headed homewards with Don and John checking out some back roads on the way back to Levin and Neville heading from Kimbolton out to Ohingaiti, Ohakune and the Parapara Road back to Whanganui. A small turnout (perhaps quality rather than quantity?) but a good day out.

Murray #2690

Area Repot: Wairarapa

by Peter Tibbs



16th October

Sunday the 16th October started off, with clear skies and no wind.

Ann and I climbed onto the bike and headed to the start point, Farriers carpark Masterton for a 9 am start your engines.

Six bikes and 8 people rolled out of Masterton, but not before one of our riders had arrived a couple of minutes late, out of petrol, and with a front tyre that almost all of the air had gone to the top. Off he went to fuel up and fill the bottom half of his tyre with air. Four service stations later we were on our way 30 minutes late. Not a problem!! Except the plan was to team up with Wellington and Rangitikei riders at 10.30 at Viv's Kitchen Sanson. We finally teamed up at Sanson 34 minutes late not too bad considering the roading authority had put a detour in our route. That front tyre was determined to stay front and centre of this ride and decided 8 psi. was plenty. However, the rider had different ideas.

30th October

Weather Forecast stated Strong Winds and Heavy Rain - this no doubt put plenty of people off riding and other groups had cancelled their rides the day before.

However, we woke to find the weather not too bad and I arrived at the Farriers Carpark, Masterton bathed in bright sunshine and no wind. So much for the weather Forecast!

It wasn't long before other riders and bikes started to arrive, me being the only BMWMC member to turn out. Amongst these bikes were two restored Airheads which was really good to see them out and about.

Seven bikes made their way to Mangatainoka Brewery Motorcycle Show. We ran into a little moisture around Mount Bruce which looked to be no more than a very fast high-flying sparrow relieving itself as it tried to head us off.

After walking around the bikes on show I reckon that an Airhead which I know of here in the Wairarapa would have won the top bike in the show - but unfortunately, the owner had chosen not to come.

That aside it was good to catch up with Folker who was there on his Airhead.

Time flew by, but it was soon time to mount up and head for home.

Good company good ride and the Free Show, I think was priced about right. 😊

Until next time.

Wheels down & Feet up.

Tibsy

Mb: 027 335 6843

Be informed and perhaps have a say

Main article by Waka Kotahi

Interim State Highway Speed Management Plan

"We all deserve a transport system that puts people at the centre – that protects and helps us to get to the places and people important to us, so we can live life to the full.

Speed limits were first set before we knew what was safe and appropriate for our roads. We know this harms people we care about and have a responsibility for.

It's our responsibility to do better.

We're taking practical steps to ensure we're protecting the people and communities we care about. We welcome you to be part of that journey.

A new approach to managing speeds

To put people, and the diverse ways we use our roads and streets at the heart of how we plan and maintain our transport system, the way we manage speeds has changed.

A new Land Transport Rule: Setting of Speed Limits 2022 came into effect in May 2022, requiring road controlling authorities to develop speed management plans with a whole-of-network approach every three years, aligning with the National Land Transport Programme (NLTP) cycle.

As this legislation took effect during the current 2021-24 NLTP period, we're taking a step towards the new approach by developing an Interim State Highway Speed Management Plan which includes remaining speed-related activities within the current NLTP. Next year we'll share the State Highway Speed Management Plan for 2024-27 under the new legislation for feedback.

We'll consider feedback from this consultation alongside existing information to finalise the interim plan. Once the plan has been certified, we'll publish it online, and implement speed limits during the time periods proposed in the plan.

Consultation is open from 14 November to 12 December 2022."

Full article [HERE](#)

[Draft Interim State Highway Speed Management Plan \[PDF, 24 MB\]](#)

[Land Transport Rule: Setting of Speed Limits 2022](#)

Agree? No problem.

Disagree or not entirely happy? Here are some other links:

[Change.org - Stop needlessly dropping speed limits](#)

[Act - Stop dropping speed limits](#)

Area Report: Top of the South/Te Tau Ihu

By Gretchen Holland



Bikers Brunch event October 2022



This is an annual event (usually) run by various organisations like the Police, ACC, our two local councils and various motorcycle training/safety groups.

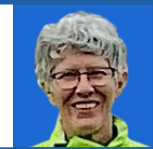
We were asked if we wanted to have a display so a few 'guys' with experience in such things produced the necessary gazebo, deck chairs, flags and bikes and got there early enough to set it all up, have a good range of bikes on show and 'man' our display. It was good to see a few other members wandering around and calling in on us as well as a couple of others showing an interest in joining us.

Thanks to Dale, Peter W, Lew, Andy, Murray, Trudi, Rod, Rick, Ash, Gretchen and Tony for all did.



Area Report: Top of the South/Te Tau Ihu

By Gretchen Holland



Ride leader & scribe - Peter Wood

Our usual monthly ride on the second Sunday of each month was on 9th October and we had a Supporter's gazebo set up for our Nelson group at the Bikers Brunch. This is a thank you to all Nelson Tasman motorcyclists and to encourage rider safety training.

Training courses for motorcyclists in our region are free (sponsored by Nelson, Tasman and Marlborough councils and ACC) and you can get a bonus \$200 off your motorcycle registration. Anyway, as it wasn't a 'proper' ride I suggested a ride to Wangapeka the following Sunday.

Wangapeka ride - 16 riders turned up for the first section which was from Richmond to Kohatu (Flat Rock Café for coffee and snacks) via Wakefield, 88 Valley and Golden Downs. It was a lovely sunny day but the wind was quite nippy and a little gusty. From then on we were down to 12 riders - from Kohatu to Tapawera, Tadmor, Matariki where it was 20 kms of unsealed road, which got narrower as we proceeded, three concrete based and one stone based fords. One was very slippery and it claimed a couple of bikes despite crossing with caution. We stopped for a picnic lunch at Courthouse Flat which is the end of the road. Gold was discovered here in the 1870s. The town, Gladstone, had three hotels, a bakery, butcher, store, chemist and courthouse. All that remains now is a pile of stones from the courthouse in a very nice reserve with lots of bird song and walking tracks in all directions, including the Wangapeka Track to Little Whanganui on the West Coast. Our return was split with some riding back via the Sherry River gravel road and the others direct to Tapawera for a much deserved ice cream.

Riders were - Deane, Trevor, Marcus, Stan, John, Gretchen, Tony H, Rick, Murray, Peter W, Richard C2, Dale, Alan, Dean C, James, Tony B.

Good to see some members for the first time or after a long time. Ditto for the non-members.

Peter wood





**BMW
MOTORRAD**



THE NEW 40 YEARS GS ANNIVERSARY SERIES



MAKE LIFE A RIDE

Area Report: Canterbury

by Ralph Moore



MacDonald Downs Ride. Sunday 23rd October

It felt like summer had arrived early as we met up at Ravenswood BP, just north of Woodend.

We headed north across the Ashley river and swung onto it's north bank to ride along the top of the stop bank for 5km to pass through the town of Ashley. Then onto backroads through Balcairn and Broomfield, before hitting the gravel on Mound Road. We were soon heading up Pyramid Valley, and turning into MacDonald Downs.



Once we had stopped by the farm office and paid our access fee, we were off along the road through the farm

Cont...

Area Report: Canterbury

by Ralph Moore



Jo Buckner cruising through MacDonald Downs

Eventually we got to the far end of the farm and turned onto Okuku Pass Road, soon crossing Lees Pass, and dropping down to ford the Okuku River, which was nice and shallow on the day. Soon we were enjoying the open spaces of Lees Valley, and 26 deg, then the long and winding road through the Ashley Gorge. Onto the black again, and into Oxford to the Sheffield Pie Shop. (Sheffield pie shop no. 2). After eating all the pies, the group split up and headed for home. Garth Brookland took me on a short cut back to Christchurch. From the Waimak Gorge Bridge, we rode the gravel tracks along the north bank of the Waimak River.

Ralph #3082

The farm road took us over some very nice country. One comment that I heard was that you needed good pressure in your tyres on this road, as after recent grading work, there were many rocks sticking up above the surface of the road. You tended to hit these quite violently and could easily damage a rim if you were running lower tyre pressure.



Quick note:

We have completed a stage in 'cleaning' our database in preparation of new systems being adapted. This means we have now simplified the area numbers to just 13 and any area that was above 4 has now got a new area number.

If anyone is in a location that might benefit from runs or gatherings from neighbouring regions, please ask to be added to it if wanted. Or ask your Area Rep to be kept informed of the other activities.

There will be a menu for the South Island RAG posted on our website very soon, so please check the events page.

Avon City Motorcycles



The Ultimate Riding Machine



That's right! Present your BMWMCNZ Club membership card at Avon City Motorcycles and you'll receive a 10% discount on all service costs, parts and genuine BMW accessories.

MAKE LIFE A RIDE



GS Rallye October Lakes Ranch Rotorua



Road the BMW MC GS Rallye – A most excellent adventure:

Early one morning in a remote forest clearing shrouded by eerie mist, two kindred spirits were in deep conversation. These two, let's call them Pete and Steve, were discussing the fact that BMW Motorrad had gone missing in action when it came to backing initiatives that support and promote the brand.

The Riverhead GS Rallye had experienced a shock pull of expected backing and the 2021 GS Rallye event ended up being the KR350. To all intents and purposes, it seemed that this established popular event, let's call it an institution, seemed doomed. Neither Pete nor Steve was prepared to accept that outcome and as the sun fought to break through the mist some brilliant thinking also started to dawn.

Their collective wisdom was that the GS Rallye should henceforth be named the BMW MC GS Rallye. BMW Motorcycle Club would provide a two-year pipeline of underwriting commitment reviewed annually. A special events account would be established within BMW MC which would receive donations thereby leaving the Club's existing capital and revenue untouched. Pete and the Kiwi Rider team would handle all event logistics except accommodation. BMW Motorcycle Club members would enjoy a substantial discount for the event.

Pete and Steve parted ways happy in the knowledge that the GS Rallye would be an ongoing happening thing once a few minor details got sorted. Those minor details were (1) They had no idea where the event would take place and they had limited time to establish route maps (2) They had no idea where the money would come from as there was no time to put the funding structure in place (3) Steve had not shared anything of this cunning plan with his fellow BMW MC board members.

Some time following this early morning encounter something truly amazing crossed the radar. That amazing thing was Lakes Ranch, a 90-hectare property in a central North Island location capable of bulk



Rally Report: GS Rallye 2022

by Stephen Parkinson



accommodation and catering. A visit to Lakes Ranch by Pete, Steve and a bunch of others left everyone excited about the potential of this resource.

So that was it, the inaugural BMW MC GS Rallye was going to take place from Lakes Ranch Rotorua. There would be approx. 350kms of sealed road ride, slightly fewer kms of gravel ride and an adventure challenge section just because it seemed like a good idea. The event would be open to Club members, non-Club members, and all brands.

There was still that lingering question, just how the hell all this was going to be paid for.

Initially, the event was scheduled for the first weekend in November, but Lakes Ranch had a prior booking. Fortunately, the previous weekend was available, unfortunately, Fiona, Pete's partner had arranged a weekend away for them both on that weekend, fortunately, Fiona sacrificed that weekend away. Fiona should forever be remembered as a saint amongst women.



Rally Report: GS Rallye 2022

by Stephen Parkinson



Having established Friday, October 28th as the day when shit gets real, that left a grossly inadequate 12-week lead-in to the event. Sending out registration forms for an event without any routes plotted or any idea how to cover expected expenses is a fairly intense experience. To make the inaugural BMW MC GS Rallye event happen an awful lot of people donated their time and resources, machinery used to link challenge sections was not charged, and private access fees normally ranging from \$1,000 to \$10,000 were not levied. All the donated time and resources happened purely because of who was asking, a humbling realization for those asking the questions.

4 pm Friday 28th October it all started happening, bikes, lots of bikes converged onto Lakes Ranch from all points of the compass, acquaintances were renewed, and the air of anticipation was palpable. Folk were welcomed, briefed and fed before a good night's sleep. Saturday morning a hearty breakfast preceded a rider briefing and then it was all on.

Challenge section riders were the first out of the gate followed by the gravel

and seal riders.

Seal riders got to experience some of the best that Central North Island has on offer. At one point Pete, operating as a sweep, came upon two riders and a pillion stopped on the side of the road. Pete stopped and enquired whether they were OK which was met with the assurance that they were all good. Ever mindful of safety, Pete said to one rider "make sure you do that chin strap up before you ride off". The rider stated that he couldn't do the chin strap up prompting Pete's question "why, is it broken?" The rider responded "it's not broken, I have Parkinsons" holding out his hands and displaying a pronounced tremor. "How the hell do you ride?" Pete asked. The rider replied, "well if I hang onto the throttle, it gets a bit snatchy, so I put it on cruise control and hang onto something else". Ignoring questions of sensibility, that level of passion for riding must be respected.

Gravel riders got to experience some very fast hard-packed roads, some deepish, large, lethal, rounded gravel, three closed access forest routes, and some scary deep rotted

foliage with underlying ruts. More than one or two experienced unscheduled dismounts.

Challenge section riders had to show up with a full set of knobbly tyres to even be allowed to take part. Suffice it to say that some very capable riders on bikes that were set up very well found the challenge section challenging, some probably muttering to themselves around just how challenging, as they ran out of momentum, talent, or luck and their faces hit the dirt!

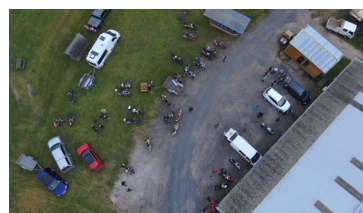
Hot soup was available for riders on return together with never-ending tea and coffee. Stories of the day replete with embellishments were everywhere. Saturday concluded with a big, well-deserved dinner, prize giving and smiling faces everywhere. Another good night's sleep, a hearty breakfast Sunday morning and everyone would be homeward bound.

It was indeed a most excellent adventure!



Rally Report: GS Rallye 2022

by Stephen Parkinson





BMWMC

SI RAG

18th-20th November 2022

South Island

Registration Link



Movember!
nz.movember.com



BMWMC
2023 AGM Rally

North Island

Friday 20th - Sunday 22nd January 2023

Accommodation Link

Registration Link

MOTORCYCLE REGO CASHBACK PROGRAM

The Motorcycle Rego Cashback Program is open until 30 June 2023, we'll pay you \$200 cashback on your rego when you renew.

We'll pay this cashback on 1 November 2023, when you renew your rego.

Find out more about the Motorcycle Rego Cashback Program.

You'll receive your cashback when you renew your rego, you know when you renew your rego.

This cashback offer ends on 30 June 2023, but we'll continue to pay the second \$100 cashback payments throughout 2023 and 2024.

Get \$200 cashback on your rego

Take one Gold course between 1 Nov 2021 and 30 June 2023, and hold a full Class 6 motorcycle licence for at least 2 years to qualify.

SHARPER SKILLS, SERIOUS CASHBACK

Events Page - [Click HERE](#) for latest details

November 2022 - [Click to Register](#)

18th-20th South Island RAG Rally

Top 10 Holiday Park, Geraldine

*Only Tent spaces left or check for cancellations

Contact Top Ten, Leanne or Howard on 03 693 8147

Or contact us - sirag@bmwmc.nz for assistance

January 2023 - [Click here to book Accomodation](#)

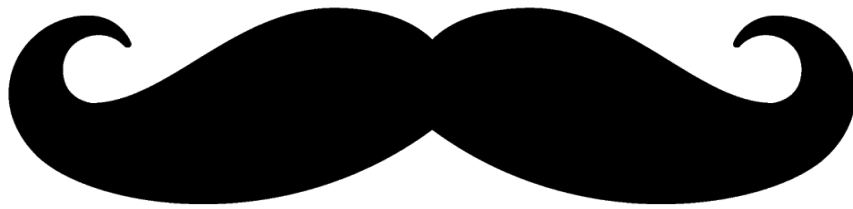
20th-22nd January: AGM and Annual Rally - Tauranga

Registration form [HERE](#) and on our website under "Events"

April 2023

Friday 31st March - Sunday 2nd April: North Island RAG

Registration form coming soon...



November already.... This year has just flown by and here we are getting ready for the South Island RAG Rally and planning our trip to the AGM Rally in January. All this and getting ready for Christmas and the added challenges that are thrown at us. It's a wonderful time of year to share quality time with your family and friends. But it can also be a very stressful time if things just aren't going your way or the way you had planned them to go. This leads me to the topic I wanted to raise this month, instead of the usual ride report. November is now known for the fundraising charity Movember.

[Movember](#) is a global organization raising awareness about men's health. Not just prostate cancer, but mental health as well.

As a person who suffered from depression and anxiety, I thought it might help if I share some of my experiences through life to encourage others to either get help or support others as life throws its curve balls. I won't bore you with specifics but give you a

highlight reel so to speak.

My childhood was, I thought, a normal one. A smack on the bum was a great way to correct wayward behaviour in naughty children. But sometimes a smack on the bum would progress into something a little more and not always necessarily for being naughty. It wasn't until I reached my teenage years that I discovered that what I had experienced was perhaps a little more than the norm. It wasn't severe, except for the one time that it was, and enough to create those niggling feelings of self-doubt, low self-esteem, and low self-worth.

Roll forward a few years and I'm into my big O.E. and was lucky enough to have been able to travel the world for just over a decade. I was a motorcycle courier in London for a good portion of that time which was the best job I have ever had. Although, it came with its own set of issues, such as being self-employed and therefore no paid sick leave. The constant worry of having an accident and being unable to work. How would

I pay my rent or feed myself and who would look after me?

As a motorcyclist courier, doing the high mileage and constantly passing cuing traffic, there were occasions where I was the first on the scene of some major accidents. One such time left a lasting scar mentally on me as I was unable to save a couple that had crashed into the back of a lorry and who died at the scene.

Roll forward a couple more years and I am back in NZ with my fiancé, planning a wedding when she leaves me for my best friend. Roll forward a few more years and after having met the love of my life (no, not my T7) my wife, we discover that she has a very rare form of cancer. Thankfully, after major surgery, she made a full recovery only to break her back a couple of months later in a horse-riding accident.

Things were starting to get on top of me. I had a lot of work pressure, young children to support and commitments. And then it happened... I had a meltdown. People

close to me recognised that I was not coping with life and stepped up to help me and encouraged me to seek help. This I did and got counselling and anti-depressants for a period. But I'm now, off the drugs, coping well and loving life, healthier and in control of my life.

I am so grateful for the help and support my co-workers and friends gave me. And what I would like to impress upon you is that anyone can have a tough time. We all have feelings of anxiety and depression at some point in our lives. Not only is it okay to talk to someone, but it's also essential if you are having a tough time or feeling helpless, after all, a problem shared is a problem halved...

I lost a family friend to suicide very recently. He was a family man with 4 young children who couldn't see any other option.

**Please, don't hesitate to ask for help if you need to or
be the shoulder for someone near you.**

Aroha nui

A member

Some of the ways to get help if you need it.

Phone a friend (the best help you can get).

Get your Doctor to refer you to counselling.

You get 4 free visits. EAP through your workplace if they support it.

Lifeline 0800 543 354

Suicide crisis helpline 0508 828 865

Depression Helpline 0800 111 757

Anxiety helpline 0800 269 4389

nz.movember.com/mens-health/get-support



ARCADIA MOTEL
CHRISTCHURCH
Comfortable, spacious affordable accommodation

FREEPHONE 0800 272 23 42
564 Ferry Road, Woolston, www.arcadiamotel.co.nz
Geoff Lester 027 285 1293



The motorcycle insurance revolution began here.

Let us protect you from a disaster at claims time.

Before we launched in the 80s, specialised motorcycle insurance didn't exist. Today, we provide the most highly tuned, customised motorcycle insurance available. If you're not with us, you have everything to gain by visiting our website anytime for a no-pressure, online quote. We'll then personally customise it with options you can choose. The only harm in not getting a quote from Star could be when you make a claim.

Get the best protection for your bike and gear before you need it.

Find us online: **starinsure.co.nz**

Give us a call on: **0800 250 600**

Fetch A Quote
starinsure.co.nz



 **STAR**
Insurance
Specialists

Marketplace

To advertise, please email
newsletter@bmwmc.nz

Marketplace is a service for members of BMWMC, NZ.

Advertisements will be accepted from members, commercial traders and non-members when it is considered in our members' interest to do so. No charge is made for Marketplace advertising. The Editor and Executive reserve the right to reject or modify any advertisement considered inappropriate and take no responsibility for errors or omissions, the quality of items, claims made, or for any transactions that ensue.

Advertisements run for approx. 3months from the date first published unless otherwise arranged with the Editor.



For Sale: One BMW 2015 R1200R low seat which I wish to swap for a higher version. Seat is unmarked and happy to email more pics if useful. Please contact: John Mortimer. Email: john@rinz.co.nz Phone 021 936 114 .

For Sale:

R850/1100 Parts

Brake hoses, brake fittings, rocket covers & gaskets, drive belt, alternator and other stuff too numerous to mention.

Please contact Dave Reynolds 021 942 515



For Sale: An XL Dririder one-piece rain suit. Hardly used and worn only a couple of times and still in new condition. Soon after purchase I found it would not fit comfortably over my normal riding gear so it has been relegated to the shelf since then. Someone else should get the benefit it can provide. I'm based in Horowhenua. Purchaser can make me a reasonable offer and we can go from there. Please contact Murray Petherick Email muzzapeth1@gmail.com Ph 027 433 6657 or 06 367 2003.

Eligibility for the ca



BMW Motorrad

MAKE
LIFE A
RIDE.

motomart

Service Department:

Dave: 04 589 5106 ☒

Sales Executives:

Kent: 021 445 787 ☒

Gareth: 022 333 6473 ☒

Dealer Principal:

Ian: ian@motomart.co.nz ☒

*Wellington's
Premium Dealership*

Proudly servicing the Lower North Island with
Genuine Parts, Genuine Accessories and
Genuine Service.

Address:

7 Rutherford Street
Lower Hutt
Wellington, 5013

Phone:

04 589 5106

Web:

www.motomart.co.nz



Area Representatives



NORTHLAND

Ian Macartney
027 281 0242
northland@bmwmc.nz

AUCKLAND

Bradley Festraets
022 314 1618
auckland@bmwmc.nz

WAIKATO

Paul Quilter
07 859 2512
waikato@bmwmc.nz

BAY OF PLENTY

Philip King
021 659 484
bayofplenty@bmwmc.nz

TARANAKI

Scott Mills
027 475 6702
taranaki@bmwmc.nz

RANGITIKEI

Murray Petherick
027 433 6657
rangitikei@bmwmc.nz

EAST COAST

Philip King (Temp)
021 659 484
eastcoast@bmwmc.nz

WAIRARAPA

Peter Tibbs (Aka Tibsy)
027 335 6843
wairarapa@bmwmc.nz

WELLINGTON

Denis Hulston
027 443 3604
wellington@bmwmc.nz

TOP OF THE SOUTH

Peter Brandon
021 842 291
topofthesouth@bmwmc.nz

CANTERBURY

Ralph Moore
027 284 7508
canterbury@bmwmc.nz

SOUTHERN

Tharon Knoetze
021 034 1760
southern@bmwmc.nz