



BMW Motorcycle Club New Zealand

# NEWSLETTER

Official BMW Club - *Established 1975*

AUGUST 2022

BMW Motorcycle Club  
Aotearoa New Zealand



MEMBER OF THE INTERNATIONAL COUNCIL OF BMW CLUBS





Aon have been proud sponsors and the preferred insurance broker to the BMWMC for more than 10 years. Our exclusive offering to BMWMC members includes discounted rates and enhanced policy cover.

**Key features include:**

- Age, multiple bike, loyalty, trike, Named Rider and Restricted Usage discounts available
- New replacement motorcycle for total loss within 24 months of registration as a new motorcycle up to 30,000km
- Windscreen/shield, headlights or tail lights covered with nil excess
- Roadside assistance for comprehensive cover
- Automatic Riding Apparel cover
- Optional Replacement Riding Apparel cover
- Nil excess for one claim within 12 months with a Ride Forever training course certificate

**Talk to your Aon broker today.**

**Email** | [nz.aonprestige@aon.com](mailto:nz.aonprestige@aon.com) **Call** | 0800 65 62 64

[aon.co.nz](http://aon.co.nz)





BMW Motorcycle Club  
Aotearoa New Zealand



#### EDITORIAL COPY TO:

Colin Gates  
[newsletter@bmwmc.nz](mailto:newsletter@bmwmc.nz)

#### OTHER CORRESPONDENCE TO

The Secretary  
BMWMCNZ  
PO Box 109-245  
Newmarket  
Auckland 1149  
New Zealand

#### PRESIDENT

Chris Souness  
021 494 952  
[president@bmwmc.nz](mailto:president@bmwmc.nz)

#### VICE PRESIDENT

Stephen Parkinson  
021 989 092  
[vicepresident@bmwmc.nz](mailto:vicepresident@bmwmc.nz)

#### SECRETARY

David Fish  
021 927 901  
[secretary@bmwmc.nz](mailto:secretary@bmwmc.nz)

#### TREASURER

Colin Gates  
027 9222 350  
[treasurer@bmwmc.nz](mailto:treasurer@bmwmc.nz)

#### MEMBERSHIP SECRETARY

Barry Petherick  
027 341 6949  
[membership@bmwmc.nz](mailto:membership@bmwmc.nz)

#### AREA REP LIAISON

Philip King  
021 659 484  
[arl@bmwmc.nz](mailto:arl@bmwmc.nz)

#### BMWMC GEAR

[shop@bmwmc.nz](mailto:shop@bmwmc.nz)

#### We'd love your Feedback

[feedback@bmwmc.nz](mailto:feedback@bmwmc.nz)

#### Contents

- 3 [New Members \(below\)](#)
- 5 [President's Podium](#)
- 8 [Area Reports starts](#)
- 24 [Pin Board](#)
- 27 [Marketplace](#)
- 28 [Area Representatives contact details](#)

#### Welcome to our New Members

We hope you'll take part in many of your local and national events. Your Area Rep will be pleased to introduce you to other members in your area. Our monthly newsletter is an open forum for all members. If you fancy a story and/or photos published about your ride, the rebuild of your bike, a book you might have read or a movie you have seen lately, or just want to get something off your chest about how the club is going, then please email/phone the Editor no later than the 25<sup>th</sup> day of the month preceding publication. **We welcome all contributions.**

#### Welcome to:

Don	<b>BAKER</b>	NEW PLYMOUTH
Glenn	<b>CLARK</b>	LOWER HUTT
Wayne	<b>HIGGINS</b>	NEW PLYMOUTH
Gav	<b>HYDE</b>	AUCKLAND
Allen	<b>JUFFERMANS</b>	NEW PLYMOUTH
Catherine	<b>McELHINNEY</b>	PAPAKURA
John	<b>McELHINNEY</b>	AUCKLAND
Mike	<b>WEREN</b>	STRATFORD

**Please Note:** Any material intended for publication in the newsletter should reach the Editor no later than the 25<sup>th</sup> day of the month preceding publication. The Newsletter is an open forum for all members. Views expressed by members may not necessarily represent the views of BMWMC. Publication of all material is subject to the Editor's discretion. Photos are courtesy of article authors and/or will be credited when known, unless otherwise specified.

Cover picture:

Photo by: Gijs Coolen

Date: June 2022





The Ultimate  
Riding Machine

# AUCKLAND'S #1 DEALERSHIP

Genuine Service. Genuine Parts. Genuine Experience.

**Cyclespot Group**

10 Wairau Road North Shore Auckland

p - (09) 486 1136

e - [sales@cyclespot.co.nz](mailto:sales@cyclespot.co.nz)





## President's Podium

Chris Souness



BMW Motorcycle Club  
Aotearoa New Zealand



## August 2022

I vowed to myself that I wouldn't open my podium message this month with a reference to the weather, but I can't help myself. It's been very chilly up in my neck of the woods recently and the mercury has been in single digits for the last week which is quite unusual for balmy Wellington, "yeah rite". That, in conjunction with the constant rain we have all had to endure has made it an interesting month with not a lot of riding taking place. I was however, out on the bike mid-week and even with my winter gloves on the heated grips were a blessing!

We are now heading out of the short days of winter and the sun going down a little later in the day which is really encouraging. Daylight saving is only six weeks away and it's that time when we see a significant increase in riders on the road. Consequently, crashes, injuries and fatalities increase as a result. This is often down to getting back out on the bike after a long hiatus and thinking we can perform as well after the bikes hibernation period - best to think again!

ACC and Ride Forever have declared September to be Motorcycle Awareness month. They are keen to raise awareness to all road users that there will be more two-wheeled machines out on the roads in the coming period. I was lucky enough to be involved in the ACC advertising campaign this year and I am looking forward to the launch next month.

Our house in Whitby is located close to the Pauatahanui entrance to the new Wellington motorway Transmission Gully. Like tens of thousands of other Wellingtonians, we have been waiting patiently for the new 17 kilometre stretch of road to open. The idea to construct a highway via the Wainui Saddle from Pauatahanui through to the Kapiti Coast was originally proposed way back in 1919. In December 2009 the Government of the time committed finances to the project with construction starting in September 2014. The then scheduled completion date of 2020 was delayed many times until the road finally opened to the public on the 30th March 2022.

I have to say, that apart from a few teething problems it was worth the wait! My parents live on the Kapiti Coast and our commuting time from home to there has reduced significantly. The journey is now a lot less stressful with the nice wide-open lanes (two each way) and even a third where needed to accommodate the slower traffic. With the mounting public pressure to open after the delays, there remain a few things that need to be tidied up which I'm sure will be addressed soon. It's a wonderful asset, adding value to the region for many, years to come.

I'm really looking forward to the warmer months which signal increased club social events and gatherings. Apart from your locally organised club rides, we have several events that you should schedule in your diary.

- We bring you the GS Rallye 2022 - Lake Ranch, Rotorua 29th to 30th October 2022
- The South Island RAG Rally – Geraldine 18th to 20th November 2022
- BMWMCNZ AGM and Annual Rally – Tauranga 20th to 22nd of January 2023

Further details for each event will be in the newsletter and website soon but please put these dates into your diary. You won't want to miss them!

Until next month, safe riding everyone.





## BMW Motorcycle Club of Aotearoa New Zealand - Risk Management Plan

The BMW Motorcycle Club of Aotearoa New Zealand is an organisation whose members join together for rides to nominated venues and for other social occasions. The organiser nominates the destination and regrouping stages along the way, but otherwise has no influence upon the way that riders behave on the road. There is no element of organised competition in the rides.

### Riding Code:

1. All Club members on Club rides shall do so as individuals responsible for their own safety and shall take into account the safety of others they encounter on the ride.
2. Club members are responsible for ensuring that their motorcycles are in a safe and legal condition, the minimum being to Warrant of Fitness standards.
3. Riders, Pillion and sidecar passengers where required, shall have as a minimum standard New Zealand Approved Motorcycle Helmets, and stout footwear, gloves and clothing that will be capable of protecting their body in the event of a mishap.

4. Club Members are to go to the aid of any others suffering a mishap.
5. Rider organisers shall nominate the destination for the ride as well as any regrouping locations or other stops. The organiser is not responsible for the other riders' behaviour or safety.
6. Riders shall ride at a speed and in a way that is comfortable for them. Do not ride outside your personal comfort envelope.
7. If a rider is unfamiliar with the route, they shall arrange to follow another rider who does know the way and who travels at a comfortable pace.
8. Riders who decide to travel as a group shall adopt a staggered riding formation such that there is an accepted following distance to the rider immediately in front. A reasonable following distance is indicated by a time of two seconds between riders for dry conditions and longer for inclement conditions and on loose surfaces.
9. The Ride Organiser and or the Club are not responsible for the participants' safety, and all participants participate at their own risk. All participants are aware that they are travelling on open public roads and are responsible for their own safety and compliance with the Road Rules and Laws.



## SERVICING AND REPAIR OF ONLY BMW MOTORBIKES

- ✓ We only do BMW
- ✓ Specialists in our field, you can't beat knowledge
- ✓ Many years of technician experience on the BMW products
- ✓ We are passionate in what we do
- ✓ We care about personal customer service
- ✓ Competitive price and best value



Transportation door to door pick up and drop off service available within Auckland.



CALL US NOW

**09 818 5448**

021 128 5546

contact@thebmshop.nz

Unit 1, 2A Akatea Road, Glendene, Auckland

www.thebmshop.nz

Like us on  
Facebook

thebikemaintenanceshop

SPORT

TOUR

ROADSTER

HERITAGE

ADVENTURE





**MCIVER & VEITCH**  
THE SOUTH'S AUTHORISED BMW MOTORRAD DEALER

ADVENTURE



HERITAGE



ROADSTER



TOUR

**MCIVER  
&  
VEITCH**



BMW Motorrad

ESTABLISHED  
**1932**

112 CRAWFORD STREET, DUNEDIN / PH: 03 477 0236

[www.mciverandveitch.co.nz](http://www.mciverandveitch.co.nz)



# Area Report: Waikato

By Paul Quilter



## Monthly Dinner - July



We had a great turnout last night for our monthly dinner meeting at the Oasis Cafe in Cambridge. 13 people in attendance and many good motorcycling stories were shared.

A number of the new membership cards were fished out and ideas were discussed as to methods of increasing our membership and the participation of local members.

Waikato members and others are warmly welcomed to join us socially and on upcoming rides.

Make life a ride guys and girls!





# Area Report: Taranaki Tales

by Scott Mills

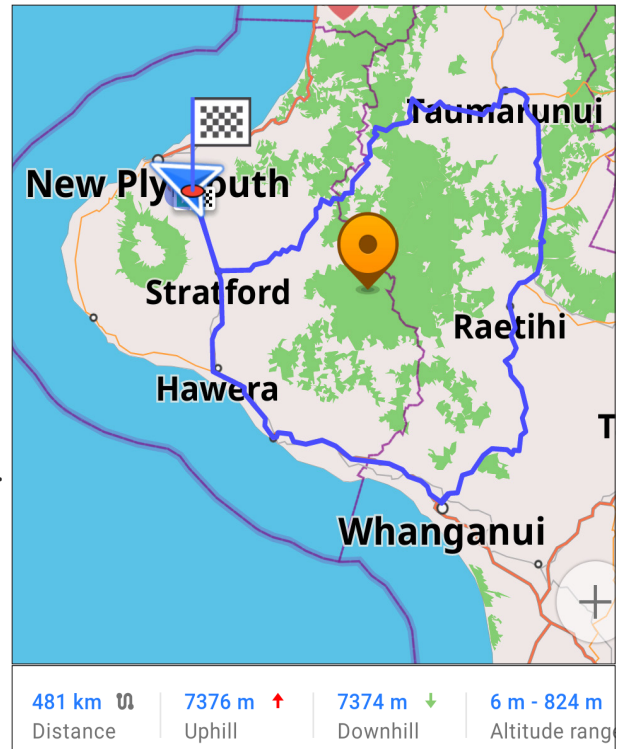


## National Park Loop - July

**H**i Team - Our second Sunday ride this month was the National Park loop

We left Inglewood at 8am and headed south to Whanganui for a pre-arranged meet up with some of the southern crew. The weather was less than delightful for the first part of the trip so when I got the email to say that they had bailed out at Sanson, I couldn't blame them. We stopped at the Pukeko's Nest at Whanganui for a coffee and a warmup before heading off up the Para's. Neville from Whanganui joined us from there and stayed until the end. Thanks for making the effort, Neville. It was great to have you along.

The Para's were quite spectacular. Plenty of waterfalls along the roadside and some great views across the valley. Our Lunch stop was at the Speights Hotel at National Park. Plenty of



A hearty Lunch

good food there and even some mulled wine. Yum. From there it was on to Taumarunui for fuel then the Forgotten Highway home. The highway can be quite challenging in the dry but in the wet it's even better! We carved our way through and got to experience the new sealed part of the Tangarakau Gorge. It was all pretty good really. The gravel is in better condition than most of the tar seal to be honest. The tunnel was a bit slippery with wet clay at the entrance. It made it a bit more challenging and

provided us with some good stories at the team debrief at the Whangamomona Hotel.

Neville left us here for his ride home to Whanganui then shortly after we all made our way home.

Cont...



# Area Report: Taranaki Tales

by Scott Mills



Speights pub National Park

Weather aside, it was a fantastic day out.

Keep the shiny side up and make life a ride.

Scott Mills # 3542



Toilet stop Raetihi

**ANCHOR INN MOTEL**  
KAIKOURA

**BOOKINGS  
ESSENTIAL  
BOOK ONLINE**

**KAIKOURA'S SUPERB WATERFRONT LOCATION**

WELL APPOINTED **FAMILY APARTMENTS** - One Bedroom  
Garden View (Sleeps 4); Two Bedroom Ocean View (Sleeps 4)

**STUDIOS** (Sleeps up to 2)  
Executive Ocean View with Spa; Superb Ocean View; Standard Garden View

**Reservations Freephone 0800 72 00 33**

208 Esplanade, Kaikoura | Ph: (03) 319 5426 | Email: [info@anchorinn.co.nz](mailto:info@anchorinn.co.nz)  
**[www.anchorinn.co.nz](http://www.anchorinn.co.nz)**

The Anchor Inn Motel is owned and run BMW Club member  
Paul Meilke #3311



# Area Report: Wairarapa

by Peter Tibbs (Tibsy)



## Wairarapa Ride Report - July



It started with a ride into town ( just 3°C!) where I hooked up with some Wairarapa riders. After a good old fashion chat we were away riding into the backcountry, only popping out into civilization (Dannevirke) to top up the fuel for Alex's DR.650 then back into the wilderness on our way to lunch at the Black Dog (Makotuku).

This Pub is a mecca for motorcyclists. Even the parking places are set out for motorcycles. Helen who owns this establishment is a real motorcyclist in her own right. If you take the trouble to get her talking about her travels you could find yourself still at the Pub a fortnight later.

However, as an aside if you have a fortune sitting idly in the bank this Pub is going on the market (if you are quick you could turn your large fortune into a very small fortune), as our hostess, Helen is going back on the road to ride round New Zealand. Watch out for her on her Yamaha VMax motorcycle.

We were lucky enough to also catch up with a couple (pictured) on a BMW Cruiser

enjoying their day out on the bike.

After lunch, it was back on our wonderful roads, roads perfect for motorcycles. We were all in heaven.

It never ceases to amaze me when riders ask me how do you find these roads when they didn't realize these roads even existed.

The message here, is to come to ride with us and discover the outback roads of the Wairarapa. Roads you may not even know exist.

Peter Tibbs (aka. Tibsy) #2806

wairarapa@bmwmc.nz

027 335 6843

# Area Report: Wairarapa

by Peter Tibbs (Tibsy)



**Whilst out riding the back-roads...**



I spotted this beauty while giving the K1600 a little exercise on the back-roads.

Now if you have experienced the good fortune of ever riding the BMW1600 you will know it's a very comfortable ride. However, it was obvious to me Mr BMW has never met these three designers.

Their design has taken one giant leap for mankind going from the armchair ride of the K1600 to the Couch ride of the multi-engine, twin control, of the two-wheel drive "Racing Couch".

The engine driving the front wheel is controlled by the guy up front, while the guy at the rear controls the rear engine while the lady lounges on the couch. Brakes are operated from the rear. Both "riders" have half a handlebar each. Now the really good side of this is if you should decide to upgrade from a K1600 armchair to the multi-engine Couch model, you'll definitely be left with change in your pocket!

Ask yourself. When was the last time you upgraded anything and finished up with change in your pocket?

GS riders might want to consider the advantages of the two-wheel drive.

Order one now and get two more free.

Peter Tibbs (aka. Tibsy) #2806

wairarapa@bmwmc.nz

027 335 6843



# Area Report: Wellington

By Denis Hulston



## Cape Palliser - Weekend ride 3<sup>rd</sup> July

Denis, Peter N, Keith, T, Ian Miller, Stuart Low, Michael McKeon, Geoff Holgate, depart Caltex Rimutaka 10am. Ride to Martinborough and stopping at the, In the Neighbourhood Café, for coffee. Michael was the “advance party” to secure a table in the sun. Peter, Ian and Stuart returned to Wellington. Four riders, Denis, Keith, Michael, Geoff, (the Top Men according to Michael) continued to Cape Palliser Lighthouse in superb weather. The Cape Palliser Bar & Grill was closed so we rode back for a late lunch at Lake Ferry – for the famous fish n’ chips. We rode home via Kahutara rather than Ocean Beach and the western lake road as the sun was low and the road damp. This was a great day riding – fine weather, no wind, stunning views of the snow on the Kaikouras, good company and food. Unfortunately, we missed meeting up with Hasan and Lynnette by 30 minutes because of some network phone problems. It’s great to have Ian back riding after his surgery.



Michael and Keith at Cape Palliser Lighthouse



Lunch at Martinborough

Peter Nash, Keith Thomson, Michael McKean and Ian Miller

Cont...



# Area Report: Wellington

By Denis Hulston



## 11th JULY - Club meal/get together

Seven members – members and partners - met for a meal and chat at Sopranos, Petone. The food and company were great despite a cold wet night

It's very good to welcome a new member – Glenn Clark. We look forward to riding with you soon, Glenn.

Welcome also to Greg Visser, a BMWMC member who has recently moved to Wellington from Nelson area. Catch up soon Greg.

## 17th JULY - Ride - Report page 15

## 31st JULY - Combo ride pongaroa

Bad weather – cold rain, wind from the north and south and slippery roads damaged by heavy rain and flooding in the Wairarapa meant we called off our scheduled gravel and bitumen rides to and around Pongaroa.

Denis #3184



Photos: Denis Hulston





# ARCADIA MOTEL

## CHRISTCHURCH

Comfortable, spacious affordable accommodation

**FREEPHONE 0800 272 23 42**  
564 Ferry Road, Woolston, [www.arcadiamotel.co.nz](http://www.arcadiamotel.co.nz)  
Geoff Lester 027 285 1293







**BMW  
MOTORRAD**



# THE NEW 40 YEARS GS ANNIVERSARY SERIES



**MAKE LIFE A RIDE**



# Area Report: Wellington

By Keith Thomson



## Gravel Ride - Weekend ride 17<sup>th</sup> July

Five riders joined our ride on 17th for some combo gravel and bitumen rides – Martyn, Keith, Alick, Hasan and Denis. Unfortunately, when we went to leave Martyn's 1250RT, on loan to replace his written-off 1200RT, wouldn't start. - Despite attempts at push starting and a jump start from a battery pack Alick had in his box of tricks, we had to leave him behind to await roadside assist.

It was a cold fine day and we'd scheduled a start to let any ice on the Remutaka hill road thaw. However, there were no ice problems, only a slight breeze to stir things up. Our usual Caltex Rimutaka service station meeting spot was fenced off and in the process of being converted to a Z service station. Infratil, owns Z and Caltex, leaving me wondering if this is part of a nationwide change and if the Caltex brand is being shelved...

It was good to see Alick again, and the first time since some of us had ridden together on a gravel training course run by Peter Tibbs in the Wairarapa. Our route included a spot where Alick had dropped his bike down a bank, which we recalled rescuing, delighted to find Alick unhurt and only minimal damage to his bike.

We had a very good ride over the Remutaka Hill, with Denis leading and me as TEC (Tail-End-Charlie). We were riding more cautiously than usual mindful of any ice in the shaded corners of the road. And it wasn't until halfway down on the Featherston side that we got held up by a slower vehicle.

We continued to Masterton for fuelling up and turned off SH2 onto Te Ore Ore Road near Faulkner's Mobil service station. Denis briefed us on two rides, giving us a printed sheet showing both routes,

1) All sealed roads 2) Sealed and gravel mix - Without hesitation, we all chose the gravel mix

option. Denis said there wasn't a route map file for his GPS so an occasional consultation with Google Maps would be required. - No problem we said, it all adds to the fun!

Our gravel option, set out by Denis, (thanks D):

SH2, Masterton, Whangaehu Valley Rd, Iharua, Central Rd (gvl), Mangaoranga Rd (gvl), Eketahuna (Lazy Graze lunch). Quarry Rd, Nireahu Rd, Mangaroa Rd, Mangaraupiu Rd, Kakariki Rd, Dougherty Rd, Hukanui, Pukehoi Rd, Kopikopiko Rd, Tutaekara, Nikau Rd, Nikau, Makomako Rd, Ballance Vy Rd, Tararua Rd, Pahiatua. Kaitawa Rd, Mangaone Valley Rd, Eketahuna, SH2, Falkner Rd, Opaki-Kaiparoro Rd, Mauriceville, Opaki, Masterton SH2, home.



Hasan, Alick, Keith on Mangaoranga road bridge

Off we went but we hadn't gone far before registering my view ahead was rather blurry. With a feeling of horror, I realised that I wasn't wearing my glasses! I must take them off whenever I take off or put on my helmet and I usually place them on the pillion seat. Stopping to check and highly relieved to see my glasses still there on the seat!

Fortunately, we found the gravel roads damp (keeping the dust down), just perfect. That and I'm probably the slowest on gravel made me glad to be TEC. Although, I'm now riding on TKC 70 tyres and was riding with more confidence and

Cont...



# Area Report: Wellington

By Keith Thomson



speed than usual.

We rode through to Eketahuna to have lunch at the Lazy Graze Cafe there. Yet, despite the parking available in front of the cafe, Denis for some reason chose to park in front of the Adult Shop a little further along. The rest of us felt obliged to park with him and lead him back to the café! We got a window seat and enjoyed a good lunch and chat.

After lunch, I was last to leave the table as I was putting on my jacket when a sprightly older lady peeled from her group to claim the table. She asked me where we had ridden from and where we were heading. Then, to my surprise she asked what sort of motorbikes were we riding. I was surprised because we don't usually get these extra questions from elderly ladies in cafes. But all became clear when she explained that her son and daughter-in-law had brought a BMW motorcycle and sidecar back from China, and her deceased husband had owned six motorbikes. - Of course, I had to explain all this to my fellow riders patiently waiting for me.

At this point, Hasan left us. He was going to ride over the Pahiatua Track and towards Taihape via Vinegar Hill to meet Lynette who was motorcycling back from Taupo on her Honda CB500F.

That left the three of us heading west, where dark clouds were building up over the Tararua Range. When Denis stopped to check Google Maps, I put a rain jacket over my motorcycle jacket. Mindful that I was now wearing seven layers and feeling a bit like how a sumo wrestler looks!

We did two more gravel roads, one of which I managed to keep up with Denis and Alick for much of the way and felt I'd even improved on my morning's effort. In some places, we noticed damage caused by the constant rains we've had



over the past weeks. There were mudslides on some hills and banks where the mud had crossed the road. Fortunately, most of it had been scraped off.

We headed back to Pahiatua and then onto roads east of SH2. These brought us back to Eketahuna from which we headed back to Masterton, cutting out the planned diversion through Mauriceville. Stopping on the northern side of town fuel top-ups and then home for the three of us. The traffic over Remutaka Hill was heavy but fortunately, not moving too slowly, though, a bit faster would have been better due to the very strong blustery winds. Coming down from the top, I could feel the wind doing its best to push me into the opposing lane... Successfully resisted!

Alick turned off in Upper Hutt while Denis and I rode on to our respective homes. I got home about 5pm having ridden circa 400km.

**Keith Thomson**



Alick and Keith, Tararua Road



# Area Report: Top of the South/Te Tau Ihu

By Gretchen Holland



## Rudy's hovercraft - 10<sup>th</sup> July

The day started with light showers and low snow on the hills around Nelson so it was cold. Lucky for us the day cleared and with our protective riding gear and handlebar warmers all was ok.

We started at 10am with a short ride for seven riders (I am sure a better day would have bought out more) off to Lud valley to see Rudy Heeman's hovercraft, powered by an 1150 boxer BMW motor.

Rudy's enthusiasm and engineering skills have produced many hovercrafts with ongoing

improvements and today we saw his latest version. Previous craft have been powered by Subaru motors but the BMW is lighter and still with enough power. He made the moulds for the fibreglass body, fans, body skirts and pulleys in fact the whole thing including a purpose-built trailer. A very interesting and informative morning with a start-up demonstration included – he had to tie it down first and it was really noisy despite his getting it to run as quietly as he can!

Google  
(Rudy  
Heeman's  
flying  
hovercraft)  
to see his  
previous  
hovercraft in  
action or  
([CLICK HERE](#)).



Dale (with his latest bike only collected the day before), Andy and Lew headed for home while Gretchen, Tony, Rick and Peter carried on to the Pelorus Tavern at Canvastown for a bar lunch by the open fire. After lunch it was an easy and interesting ride up the Wakamarina Valley to Butchers flat DOC camp – including about 5 kms of gravel and 3 creek crossings. The area has lots of history with information boards about the gold workings in the late 1880s.

A good day riding completed with the mandatory coffee, cake and ice cream at Rai Valley.

Ride leader and article, **Peter Wood** - Thanks to all.

PS - Rain drops were starting to fall as Tony and Gretchen neared Nelson and then his wee Kawasaki 250 ran out of petrol 3 kms from home. 'Last time it did 180kms on a tank!' Not today...

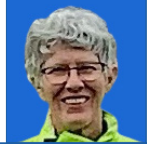
Gretchen # 949

Cont...



# Area Report: Top of the South/Te Tau Ihu

By Gretchen Holland



Any wrecked BMW 1200 bikes out there? Rudy is after a 1200 boxer motor - phone 03 545 1399.



## Avon City Motorcycles



The Ultimate Riding Machine



That's right! Present your BMWMCNZ Club membership card at Avon City Motorcycles and you'll receive a 10% discount on all service costs, parts and genuine BMW accessories.

## MAKE LIFE A RIDE







## Big Shout Out

Gotta love the mc world

After Robs F800 clutch croaked spectacularly near Martinborough (new one was/is on back order). Options for recovery were running out. But that all changed when Mike of Featherston pulled up on his Harley whilst out riding (no, the irony didn't escape us 🙄) Anyway, Mike went home on two and returned with 8 wheels! Originally planning to take Rob to Featherston but Mike and his partner took Rob home to Porirua!

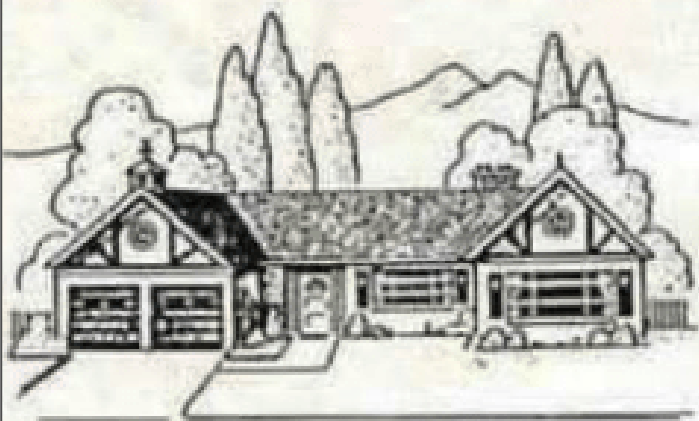
Top people - thank you! 👍





## And on the lighter side...

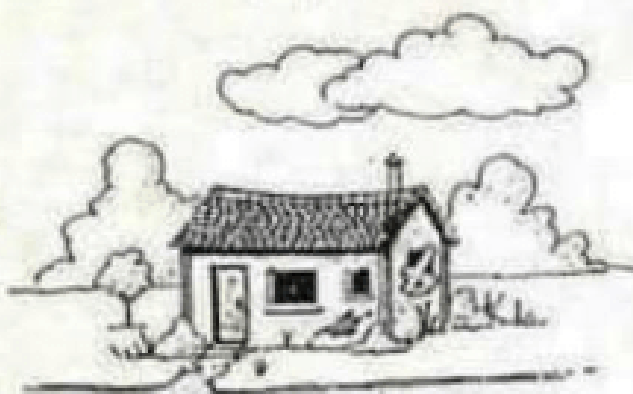
### How your House is looked at:



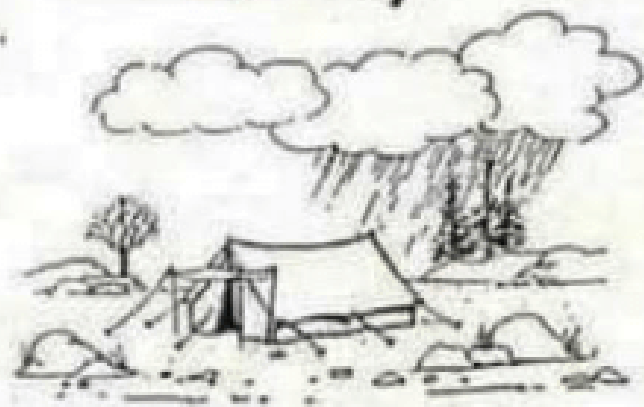
...by you



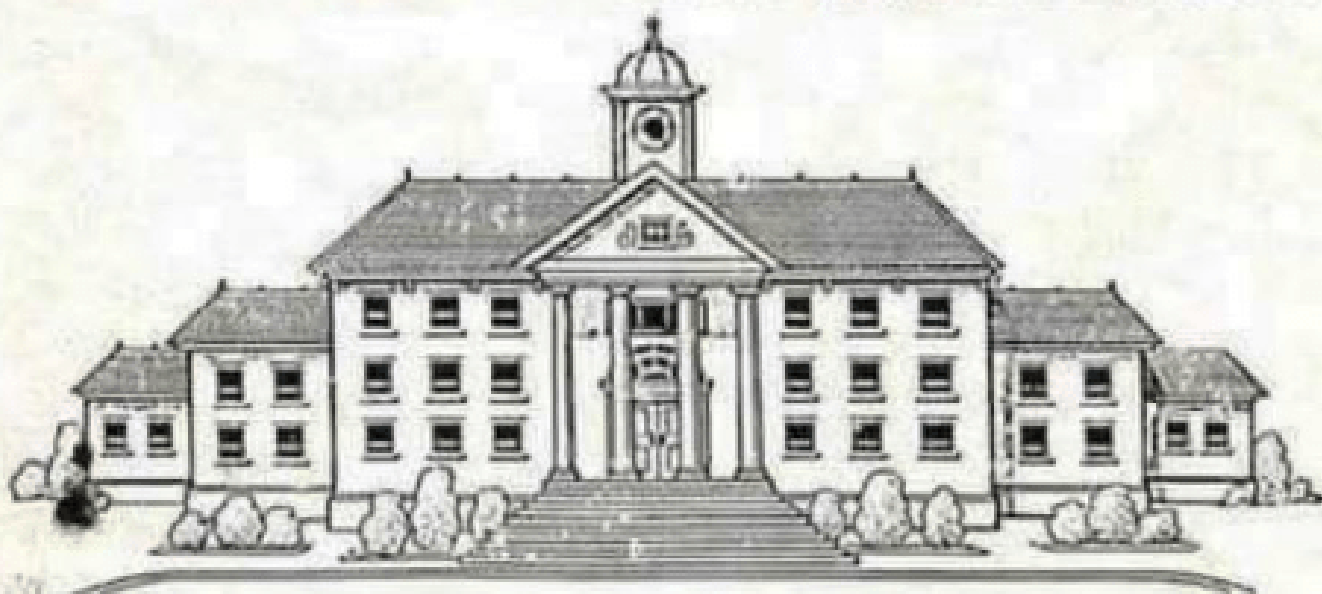
...the buyer



...the Bank loan



...the Insurance Evaluator



...by the Municipality for rates and taxes



# Spot the difference (five things)

Thanks to Dave Morris for sending it in





# Save/Book the Dates...

## October 2022 -

29<sup>th</sup>-30<sup>th</sup>: GS Rallye 2022 Lake Ranch, Rotorua

Choose from:

On seal ride (350km approx.)

Mix of Seal and Gravel riding

Challenge sections - Only those with knobbly tyres!

Member Discount | Great Rides | All Makes of MC | Fantastic Value!

For more details, email: [gsrallye@bmwmc.nz](mailto:gsrallye@bmwmc.nz) - stating preferred ride

---

## November 2022

18<sup>th</sup>-20<sup>th</sup> South Island RAG Rally

Top 10 Holiday Park, Geraldine

ONLY 1 cabin left to book or multiple Tent spaces available

Contact. Leanne or Howard on 03 693 8147

---

## January 2023

20<sup>th</sup>-22<sup>nd</sup> January: AGM and Annual Rally - Tauranga

Booking form coming next Newsletter and website soon

---

## IN PLANNING:

April 2023 - Dates TBC - North Island RAG

More details soon...





# PIN BOARD



BMWMC  
GS Rallye  
29th-30th October 2022  
Rotorua  
email interest to [gsrallye@bmwmc.nz](mailto:gsrallye@bmwmc.nz)



BMWMC  
SI RAG  
18th-20th November 2022  
South Island  
Details to follow



BMWMC  
2023 AGM Rally  
North Island  
Details to follow  
Friday 20<sup>th</sup> - Sunday 22<sup>nd</sup> January 2023

**MOTORCYCLE CASHBACK PROGRAM**

The Motorcycle Rego Cashback Program is open from 1 Nov 2021 to 30 June 2023, with a final instalment payment on 30 June 2024.

**Get \$200 cashback on your rego**

Take one Gold course between 1 Nov 2021 and 30 June 2023, and hold a full Class 6 motorcycle licence for at least 2 years to qualify.

We'll pay the first \$100 instalment on 1 Nov 2021, and the second \$100 instalment on 30 June 2024. You'll receive your cashback when you know when you've completed your Gold course. This cashback offer ends on 30 June 2023, but we'll continue to pay the second \$100 cashback payments throughout 2023 and 2024.

**SHARPER SKILLS, SERIOUS CASHBACK**





# BMW Adverts from the past

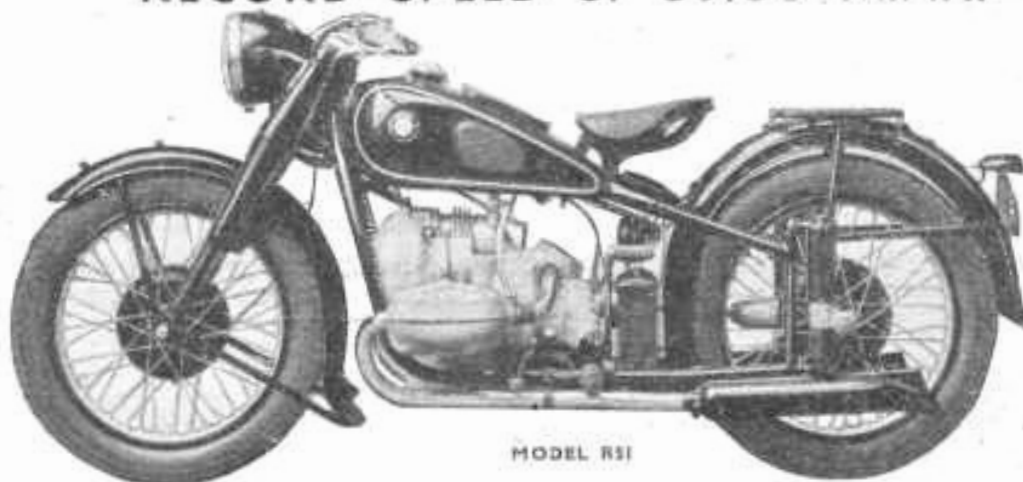
# Senior TT

# 1st 2nd

Rider: GEORGE MEIER

Rider: JOCK WEST

RECORD SPEED of 89.38 M.P.H.



MODEL RS1

Produced in the World's finest Motor Cycle factory, every BMW machine is a direct result of innumerable successes in International Events.

Telescopic oil-damped forks, spring frame, shaft drive, transverse twin cylinder engine incorporating light alloy cylinder head, unit construction and a host of other exclusive features have been perfected in the World's most gruelling races, and result in a machine which provides a degree of road-holding, speed and safety combined with unfailing reliability hitherto undreamed of.

Why not write for full details of what has proved itself to be the

**HOLDER OF  
WORLD'S  
MAXIMUM  
SPEED RECORD  
AT  
173.67 M.P.H.**

## 939 MODELS

23 250 c.c. o.h.v. £59.15

35 350 c.c. o.h.v. £85

51 500 c.c. o.h.v. £123

66 600 c.c. o.h.v. £135

61 600 c.c. s.v. £113

71 750 c.c. s.v. £123

ices include Bosch lighting, horn and Speedometer.

atalogue from

**WORLD'S FASTEST AND FINEST MOTOR CYCLE**

**A.F.N. Ltd., Falcon Works, LONDON RD., ISLEWORTH. 'Phone: HOU 0011-2-3-4**





## The motorcycle insurance revolution began here.

**Let us protect you from a disaster at claims time.**

Before we launched in the 80s, specialised motorcycle insurance didn't exist. Today, we provide the most highly tuned, customised motorcycle insurance available. If you're not with us, you have everything to gain by visiting our website anytime for a no-pressure, online quote. We'll then personally customise it with options you can choose. The only harm in not getting a quote from Star could be when you make a claim.

**Get the best protection for your bike and gear before you need it.**

Find us online: [starinsure.co.nz](https://starinsure.co.nz)

Give us a call on: **0800 250 600**

*Petch A Quote*  
starinsure.co.nz



 **STAR**  
Insurance  
Specialists



# Marketplace

To advertise, please email  
newsletter@bmwmc.nz

Marketplace is a service for members of BMWMC, NZ.

Advertisements will be accepted from members, commercial traders and non-members when it is considered in our members' interest to do so. No charge is made for Marketplace advertising. The Editor and Executive reserve the right to reject or modify any advertisement considered inappropriate and take no responsibility for errors or omissions, the quality of items, claims made, or for any transactions that ensue.

Advertisements run for approx. 3months from the date first published unless otherwise arranged with the Editor.



## WANTED

Any wrecked BMW  
1200 bikes out there?  
Rudy is after a 1200  
boxer motor -

phone 03 545 1399.

## Avon City Motorcycles



The Ultimate  
Riding Machine



That's right! Present your BMWMCNZ Club membership card at Avon City Motorcycles and you'll receive a 10% discount on all service costs, parts and genuine BMW accessories.

## MAKE LIFE A RIDE







BMW Motorrad

MAKE  
LIFE A  
RIDE.

**motomart**

**Service Department:**

Dave: 04 589 5106 ☒

**Sales Executives:**

Kent: 021 445 787 ☒

Gareth: 022 333 6473 ☒

**Dealer Principal:**

Ian: ian@motomart.co.nz ☒

*Wellington's  
Premium Dealership*

Proudly servicing the Lower North Island with  
Genuine Parts, Genuine Accessories and  
Genuine Service.

**Address:**

7 Rutherford Street  
Lower Hutt  
Wellington, 5013

**Phone:**

04 589 5106

**Web:**

www.motomart.co.nz



## Area Representatives



**NORTHLAND**

Ian Macartney  
027 281 0242  
northland@bmwmc.nz

**TARANAKI**

Scott Mills  
027 475 6702  
taranaki@bmwmc.nz

**WELLINGTON**

Denis Hulston  
027 443 3604  
wellington@bmwmc.nz

**AUCKLAND**

Bradley Festraets  
022 314 1618  
auckland@bmwmc.nz

**RANGITIKEI**

Murray Petherick  
027 433 6657  
rangitikei@bmwmc.nz

**TOP OF THE SOUTH**

Peter Brandon  
021 842 291  
tasman@bmwmc.nz

**WAIKATO**

Paul Quilter  
07 859 2512  
waikato@bmwmc.nz

**EAST COAST**

*Philip King (Temp)*  
021 659 484  
eastcoast@bmwmc.nz

**CANTERBURY**

Ralph Moore  
027 284 7508  
canterbury@bmwmc.nz

**BAY OF PLENTY**

Philip King  
021 659 484  
bayofplenty@bmwmc.nz

**WAIARAPA**

Peter Tibbs (Aka Tibsy)  
027 335 6843  
wairarapa@bmwmc.nz

**SOUTHERN**

Tharon Knoetze  
021 034 1760  
southern@bmwmc.nz