



BMW Motorcycle Club New Zealand

NEWSLETTER

Official BMW Club

AUGUST 2021

BMW Motorcycle Club
Aotearoa New Zealand



MEMBER OF THE INTERNATIONAL COUNCIL OF BMW CLUBS



Aon have been proud sponsors and the preferred insurance broker to the BMWMC for more than 10 years. Our exclusive offering to BMWMC members includes discounted rates and enhanced policy cover.

Key features include:

- Age, multiple bike, loyalty, trike, Named Rider and Restricted Usage discounts available
- New replacement motorcycle for total loss within 24 months of registration as a new motorcycle up to 30,000km
- Windscreen/shield, headlights or tail lights covered with nil excess
- Roadside assistance for comprehensive cover
- Automatic Riding Apparel cover
- Optional Replacement Riding Apparel cover
- Nil excess for one claim within 12 months with a Ride Forever training course certificate

Talk to your Aon broker today.

Email | nz.aonprestige@aon.com **Call** | 0800 65 62 64

aon.co.nz



BMW Motorcycle Club
Aotearoa New Zealand



SEND EDITORIAL COPY TO:

editor@bmwmc.nz

OTHER CORRESPONDENCE TO:

The Secretary
BMWMC
PO Box 109-245
Newmarket
Auckland 1149
New Zealand

PRESIDENT

Garry Williams
027 242 7799
president@bmwmc.nz

VICE PRESIDENT

Chris Souness
021 494 952
vicepresident@bmwmc.nz

SECRETARY

David Ross
027 645 8236
secretary@bmwmc.nz

TREASURER

Colin Gates
027 922 2350
treasurer@bmwmc.nz

MEMBERSHIP SECRETARY

Barry Petherick
027 341 6949
membership@bmwmc.nz

MEMBER REPRESENTATIVE

Philip King
021 659 484
memberrep@bmwmc.nz

BMWMC GEAR

Ian Sowden
shop@bmwmc.nz

FEEDBACK?

feedback@bmwmc.nz

Contents

- 3 New Members (below)
- 5 [President's Podium](#)
- 8 [Members Page](#)
- 10 [Area Reports](#)
- 23 [Notice Board](#)
- 25 [Marketplace](#)
- 26 [South Island Rally Registration](#)
- 27 [Rally 2022 Registration Form](#)
- 28 [Area Representatives](#)

Welcome New Members

We hope you'll take part in many of your local and national events. Your Area Rep will be pleased to introduce you to other members in your area. Our monthly newsletter is an open forum for all members. If you fancy a story and/or photos published about your ride, the rebuild of your bike, a book you might have read or a movie you have seen lately, or just want to get something off your chest about how the club is going, then please email/phone the Editor no later than the 23rd day of the month preceding publication. **We welcome your contribution.**

Welcome to:

Daniel
Simon
Roderick
Aleksandra
Keith
Lesley

FRIEDRICH
HANTLER
HERBER
MIJOVIC-CIRILOVIC
MORGAN
WILLMOT

RAGLAN
AUCKLAND
CHRISTCHURCH
AUCKLAND
CHRISTCHURCH
AUCKLAND

Please Note: Any material intended for publication in the newsletter should reach the Editor no later than the 23rd day of the month preceding publication. The newsletter is an open forum for all members. Views expressed by members may not necessarily represent the views of BMWMC. Publication of all material is subject to the Editor's discretion. Photos are courtesy of article authors unless otherwise specified.

Cover picture:
Photographer: Stephen Oatley
Model: Denis Hulston
Location: In the Wairarapa

August 2021



The motorcycle insurance revolution began here.

Let us protect you from a disaster at claims time.

Before we launched in the 80s, specialised motorcycle insurance didn't exist. Today, we provide the most highly tuned, customised motorcycle insurance available. If you're not with us, you have everything to gain by visiting our website anytime for a no-pressure, online quote. We'll then personally customise it with options you can choose. The only harm in not getting a quote from Star could be when you make a claim.

Get the best protection for your bike and gear before you need it.

Find us online: starinsure.co.nz

Give us a call on: **0800 250 600**

Petch A Quote
starinsure.co.nz



 **STAR**
Insurance
Specialists



President's Podium

Garry Williams



BMW Motorcycle Club
Aotearoa New Zealand



President's Podium July 2021

I'm a happy guy all things considered. Retrieved my freshly serviced HP2 from storage at Avon City Motorcycles earlier in the month and took a day off to head out to Scargill for some serious fun with Justin and Ralph at a Level 2 Adventure Rider Trial Clinic with Jules Huguenin.

Jules is an experienced and highly respected trials rider, riding Expert grade in New Zealand, and having competed in the world trials championships and French nationals. Aside from being an exceptional rider, Jules can teach riding skills in an easily digestible way.

Jules' training focuses on feet and body positioning, bike balance, clutch, and throttle control, focus points, picking lines, etc. As you move through the various levels of training, you gain more skills to help successfully ride a wide range of typical off-road terrain we find in New Zealand.

Got to admit it was flipping slippery in places but there were no major mishaps, and the view from the top of Foster's place was absolutely worth the effort.

Training clinics like these, and those run by Chris Birch, are an excellent way to learn more about good bike control. Jules and Chris both run their clinics on private farming stations, so they include dirt tracks, small hill sidling, hill climbs, hill descents, line picking through obstacles, creek crossings, bike recovery, etc. I'd encourage anyone with a GS to keep an eye out for one of these clinics running near you, or get a group together from your area and make it happen.

We're making good progress on our property. The Pond Company is doing a grand job on the restoration of our fishpond. I have all the damaged fencing piled up ready for disposal and have a digger booked for the coming weekend to clear the remaining debris from under the shelterbelts, I'm hopeful we can get on with new posts and fencing by the end of August. Looks like WDC is going to provide some assistance with disposing of all the rubbish we can't burn; we'll hear about that this week. Quite a way to go yet but there's light (albeit dim) at the end of the tunnel. The Okuku River is still running high due to heavy rain on the hills but staying its course thankfully. I have a lot of empathy for the folk on the West Coast and up around Marlborough.

Our builder seems to think maybe four weeks until we're back in the house. Looking forward to that!

Thank you to those of you who have been in touch offering practical or moral support for what we've been through over the last few months.

A very good turnout for our Canterbury ride around the Banks Peninsular last Sunday, a very nice mix of narrow stock routes twisting around the hills. Great to meet our newest member, Fernando Costa, riding a well optioned 40th Anniversary R1250GSA.

There's steady trickle of registrations coming in for the 2022 Annual Rally in Methven. We are re-thinking some of the GS routes we had planned (it's going to take many months to repair some of the roads we had originally been thinking about using) but it'll still be fun.

Continues next page



Presidents Podium

Garry Williams



BMW Motorcycle Club
Aotearoa New Zealand



President's Podium July 2021 cont...

The Top of the South team appear to have the South Island RAG Rally sorted for the weekend of 20/21 November. I understand there's a reasonably large group coming across from the North Island. Look forward to seeing you, I'm also looking forward to the Area Reps meeting in August, more about that next month.

If you're a relatively new member it would be great to see you at our club events. There is plenty going on at a local area

so do yourself a favour by looking out for the details from your Area Rep, the club website, or our Facebook page.

If you haven't already, how about joining our BMW Motorcycle Club NZ Group page on Facebook? Simply head to the BMWMC Facebook Page, click on the "Join Group" button, answer a simple question, and join the banter and post photos and anything else you like about your riding experiences. It's a great way to share.

Wherever your travels take you this month; have fun and make good decisions!



Join Us On
Facebook

START PLANNING NOW!

South Island RAG Rally is next on our Calendar Booking form P. 26
and after the AGM/Annual Rally. Booking form P. 27

BMW Motorcycle Club of Aotearoa New Zealand - Risk Management Plan

The BMW Motorcycle Club of Aotearoa New Zealand is an organisation whose members join together for rides to nominated venues and for other social occasions. The organiser nominates the destination and regrouping stages along the way, but otherwise has no influence upon the way that riders behave on the road. There is no element of organised competition in the rides.

Riding Code:

1. All Club members on Club rides shall do so as individuals responsible for their own safety and shall take into account the safety of others they encounter on the ride.
2. Club members are responsible for ensuring that their motorcycles are in a safe and legal condition, the minimum being to Warrant of Fitness standards.
3. Riders, Pillion and sidecar passengers where required, shall have as a minimum standard New Zealand Approved Motorcycle Helmets, and stout footwear, gloves and clothing that will be capable of protecting their body in the event of a mishap.

4. Club Members are to go to the aid of any others suffering a mishap.
5. Rider organisers shall nominate the destination for the ride as well as any regrouping locations or other stops. The organiser is not responsible for the other riders' behaviour or safety.
6. Riders shall ride at a speed and in a way that is comfortable for them. Do not ride outside your personal comfort envelope.
7. If a rider is unfamiliar with the route, they shall arrange to follow another rider who does know the way and who travels at a comfortable pace.
8. Riders who decide to travel as a group shall adopt a staggered riding formation such that there is an accepted following distance to the rider immediately in front. A reasonable following distance is indicated by a time of two seconds between riders for dry conditions and longer for inclement conditions and on loose surfaces.
9. The Ride Organiser and or the Club are not responsible for the participants' safety, and all participants participate at their own risk. All participants are aware that they are travelling on open public roads and are responsible for their own safety and compliance with the Road Rules and Laws.



SEASONAL DISCOUNT
20% OFF
PICKUP SERVICE

When you book in a BMW motorbike service with us

- Applies 1st June to 31st August 2021
- Quote coupon code: *Seasonal Special*
- Auckland only

- ✓ We only do BMW
- ✓ Specialists in our field – you can't beat knowledge
- ✓ Many years of technician experience on the BMW products
- ✓ We care about personal customer service

CALL US NOW 09 818 5448

 021 128 5546

 contact@thebmshop.nz

 2A Akatea Road, Glendene, Auckland

 www.thebmshop.nz

 Like us on Facebook

 thebikemaintenanceshop



Member's Page:

Jan Titulaer writes:

Here some photos of my photos to share with the other readers.

When I turned 60 I took my 1975 BMW R60/6 for a trip around the South Island.

Thanks,
Jan Titulaer #2590.

Ed: thank you Jan - looks a great trip!



Welcome and thanks to New Member Paul Tuhea for sending in his picture :

This is Paul on his 2011 R1200 R Classic. Out on a group ride with friends in Sunny Nelson.

Ed: Hopefully we'll see you on some social runs soon.





The Ultimate
Riding Machine

AUCKLAND'S #1 DEALERSHIP

Genuine Service. Genuine Parts. Genuine Experience.

Cyclespot Group

61 BARRY'S POINT RD
TAKAPUNA, AUCKLAND

JAYDEN 0211907733
HENRY 0274 330 650

P (09) 486 1136
E SALES@CYCLESPOTBMW.CO.NZ

Area Report: Taranaki



Hollard Gardens

It was a cold and windy morning when the group of six met at the Z station in Inglewood.

As the riders massed, we were able to admire the information board on the side of the road opposite the service station that displayed the temperature as 5.8c. A temperature that was only raised by 1 degree the whole outward ride. It mattered not as each of the riders were dressed appropriately, seasoned as they are. However, a couple of the pillions were starting to mumble about how many layers they had on and questioning themselves on whether they should have perhaps put on a couple more... The wind chill certainly making it very cool.



We set off towards New Plymouth just after 10am. A quiet ride to the Mangorei Road turn off, where we turned off to head up the mountain, was uneventful. It's a nice little stretch of road that has recently had its speed limit lowered to 80km/hr. Lots of twisty turns and spectacular views of the valley below the ridge and of

course the wonderful Mt. Taranaki. Ray lamented later on that he would have liked to stop to get some more photos of the mountain. This from someone who has lived most of his life in Taranaki and has seen the mountain thousands of times. It truly is a spectacular mountain when seen from all angles on a cold but bright, clear, and sunny day.

We dropped down the Plymouth Road onto the main coastal highway, loving the views from the top of the road as you descend down to the sea. You can see right up north to the North Taranaki Bite and of course look down over Mt Paratutu and the city. Riding through Oakura looking at the new residential developments, some of us perhaps thinking we should have bought property here 20 years ago as it now rivals Auckland's house prices as a comparison. But, in the same thought, probably resenting the intrusion on the beautiful little town at the same time. Are we ever truly happy? Philosophical thoughts are often had while riding bikes, at least, they are by me in any case.

We carried on out of the village and headed south

toward Okato. It was here we turned off to take the inland road around the mountain. It was also about here that the coffee I had at the service station was starting to make itself felt, and I wondered where I had packed my crochet hook, as it was probably going to be needed in a short while in order to find my manliness, which had retreated somewhat further back into me than was normal due to the very cold southerly head wind....

No doubting the ride was great to Hollard Gardens, but most enjoyed the sight of the available toilet and free tea or coffee that was on offer in the information kiosk. If you haven't stopped here



before, you should. It is a beautiful garden with a wonderful BBQ area that is free to use. Bring your own clean up gear though as it is not supplied and eases the burden on the caretaker of the property. And for those with small children, there is also a great little playground for them to enjoy. A hidden gem in South Taranaki.



From here we set off for Lunch at the Midhurst

Area Report: Taranaki



Tavern. Taking the back roads to avoid traffic, we arrived just after 12pm. The Midhurst Tavern does a lovely Sunday Roast, as well as other food items. And when I say roast, I'm not talking about the food variety. More the put down variety as Colin was to discover when he had not finished his chips by the time the waitress came to clear the table. It's all done good naturedly, and Colin, being the gentleman he is, managed to hold his own without being rude. Needless to say, the ills of the world were discussed over lunch and most of the world's problems were solved.

Ray took the opportunity to present Alan with his 10-year badge and certificate. Ray, being the



eloquent man he is, summoned up some heartfelt words of belonging and companionship and Alan, being the great orator he is, managed a short but to the point speech that reflected upon the years he has been in the club. From what I recall he said "I didn't know there was such a thing as a ten year membership badge" It was a great speech...(LOL) From here, we set off home to enjoy what was left of the day in the somewhat more tropical 8 degree afternoon sun. Some (me) took the opportunity to take an afternoon nap once home, to help digest the wonderful lunch and ride we'd had.

Yours Waffley,
Scott Mills #3542





MAKE
LIFE A
RIDE.

motomart

Service Department:
Dave: 04 589 5106 ☒

Sales Executives:
Kent: 021 445 787 ☒
Gareth: 022 333 6473 ☒

Dealer Principal:
Ian: ian@motomart.co.nz ☒

Wellington's
Premium Dealership

Proudly servicing the Lower North Island with
Genuine Parts, Genuine Accessories and
Genuine Service.

Address:
7 Rutherford Street
Lower Hutt
Wellington, 5013

Phone:
04 589 5106

Web:
www.motomart.co.nz

Area Report: East Coast



Bollywood Restaurant - July



In the picture, from left, are Tony, Maria, Stella, Walter, Les, Bronwen, Peter, Folker, Leone, Robyn, Warren and John F.

On a cold winter's night it was a delight to join our fellow BMWMC members at the Bollywood restaurant in central Napier. The place was lovely and cosy, the service excellent and the meals yummy.

We are looking forward to adding a mid-month lunch ride to our activities.

John Wuts #1867,
East Coast



BMW MOTORRAD

OFF ROAD RIDING SKILLS DAY

09TH OCTOBER



GS Training Day - New Date 9th October, Riverhead Forest is the venue , and the cost is just \$50 ,
Ohter dates/locations to follow. Please email pete@kiwirider.co.nz for more information

ANCHOR INN MOTEL
KAIKOURA

**BOOKINGS
ESSENTIAL
BOOK ONLINE**

KAIKOURA'S SUPERB WATERFRONT LOCATION

WELL APPOINTED FAMILY APARTMENTS - One Bedroom
Garden View (Sleeps 4); Two Bedroom Ocean View (Sleeps 4)

STUDIOS (Sleeps up to 2)
Executive Ocean View with Spa; Superb Ocean View; Standard Garden View

Reservations Freephone 0800 72 00 33

208 Esplanade, Kaikoura, Canterbury | Ph: (03) 319 5426 | Email: info@anchorinn.co.nz
www.anchorinn.co.nz



The Anchor Inn Motel is owned and run BMW Club member, Paul Meilke #3311

Area Report: Rangitikei Roundup



Monthly Ride - 11th July 2021

Weather forecast ahead of the scheduled monthly ride, to be led by Don, didn't look too bad although closer to the day the forecast indicated the weather might be a bit inclement resulting in the regular 'fairer sex' pillions opting out of the ride. The Wanganui boys had a cool ride (literally) down to the meeting point at the Salt & Pepper Café at Ohau, with Lance joining the ride down with Peer and Neville for a coffee and chat at the café before heading back to Whanganui on the red Benelli



After coffee Don led the group of seven down SH1 to Paekakariki then over the hill, in increasing rain, to Pauatahanui. Thoughts of calling on VP Chris for a hot coffee passed through my mind but Don obviously had other ideas as he headed over Haywards and then northwards along SH2, headed for the Wairarapa. I had forgotten to tell Don that Tibsy would probably join us at the top of the

Remutaka Hill but I assumed Don would stop for a leg stretch along the way and I could tell him then to look out for Tibsy. Well, no leg stretch stop prior to heading up the Hill in increasingly heavy rain and as it happens the group got split by other traffic, with yours truly left at the rear as TEC. I didn't see any sign of Tibsy as we crested the Hill and headed down into the Wairarapa, although the rain eased off as we descended the Hill towards Featherston, making the riding a bit more pleasant. On the way down the Hill I caught glimpses of the lead bikes in the group and, sure enough, Tibsy had tagged on to them from the top of the Hill. All was well! At Featherston we did a quick re-group and headed to Martinborough for lunch at the Village Café. Nice and warm in the Café and we spent a leisurely hour or so over lunch.

Back on the road we headed through Longbush and Gladstone to Masterton, for a leg stretch and fuel stop. By this time the rain had pretty much stopped although roads were wet which made for some slightly tentative riding. From Masterton it was on to Eketahuna via Mauriceville for a brief chat and parting of the ways, with some of us heading home to other commitments and the Whanganui boys still faced with quite a long ride home.

Thanks, Don, for a good day out. Weather was a bit trying but that certainly wasn't down to you, and to be fair the forecast looked better than some of the actual weather we encountered. All part of the joys and challenges of motor cycling! Cont...



Area Report: Rangitikei Roundup



Saturday Interlude, July 24th.

Got word via FB a few das ago that Stephen O, from Raumati, was planning a Saturday trip to the Wairarapa looking for some gravel and invited any interested bods to join him, or to at least share a coffee at the Horseman Café in Shannon. The day dawned fine and clear and Barry P, Robin W and yours truly headed for the café to meet up with Stephen and Denis H. Enjoyed a convivial chat and spent some time trying to set the world to rights but after an hour or so it was evident we weren't winning that challenge so Stephen and Denis headed over the Pahiatua Track, in search of gravel en-route to Eketahuna, while the other three of us headed home to deal with some of the usual Saturday chores and commitments. A good little Saturday break-out!



Sunday Brunch, July 25

A group of 'regulars' gathered for the Sunday brunch session at the Woolshed Café on Sunday 25th. Not sure what the main topics of conversation were for the girls but the boys' conversation eventually turned to planning for the SI RAG. After tossing around a few ideas we settled on details for ferry crossings and sorted out a rough itinerary for our week around the 'top of the south'. Subject to confirmation of bookings it looks like a group of six bods and bikes will cross south on Tuesday 16th and back north on Monday 22nd. Looking forward to a few good days enjoying the sights and sounds (no pun intended) of the Nelson/Marlborough area.



MCIVER & VEITCH
THE SOUTH'S AUTHORISED BMW MOTORRAD DEALER

ADVENTURE



HERITAGE



ROADSTER



TOUR

**MCIVER
&
VEITCH**



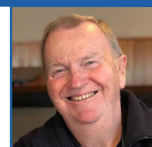
BMW Motorrad

ESTABLISHED
1932

112 CRAWFORD STREET, DUNEDIN / PH: 03 477 0236

www.mciverandveitch.co.nz

Area Report: Wellington



Sunday 25th July

Twelve members and partners attended the first of our winter local rides to the Aston Norwood Café at Kaitoke. This was a great opportunity for members to have a short ride and to meet up with other members and to maybe continue for a longer ride decided over brunch/coffee.

Sunday 25th July was a beautiful day dawned a little chilly but warmed into a calm sunny Sunday ideal for a ride.

We had a couple of new members and several other members we had not seen for a while for what was an enjoyable hour or so. Amongst those not seen for a while were Dave Ross who is a very busy man at present being the BMWMC Secretary also running the Super Shuttle Wellington end of this business. Another, long term member to attend was Brian Zemanek which was great to see him back out on his bike.



Hasan I, Keith T, Dave R, Julie & Dave O, Sylvia & Andy S and Peter N.

The photo was provided by new member Hasan & Lynette Itani. Thanks Hasan it was great meeting you and Lynette, *(who took the photo on her phone, thank you)* and I look forward to seeing you both at our monthly rides and social evenings.

Peter Nash #3184
Area Rep

ARCADIA MOTEL

CHRISTCHURCH

Comfortable, spacious affordable accommodation







FREEPHONE 0800 272 23 42

564 Ferry Road, Woolston, www.arcdiamotel.co.nz
Geoff Lester 027 285 1293





SEASONAL DISCOUNT

20% OFF

PICKUP SERVICE

When you book in a BMW motorbike service with us

- Applies 1st June to 31st August 2021
- Quote coupon code: *Seasonal Special*
- Auckland only

- ✓ We only do BMW
- ✓ Specialists in our field – you can't beat knowledge
- ✓ Many years of technician experience on the BMW products
- ✓ We care about personal customer service

CALL US NOW 09 818 5448

021 128 5546
contact@thebmshop.nz

2A Akatea Road, Glendene, Auckland
www.thebmshop.nz

Like us on Facebook
thebikemaintenanceshop



Area Report: Top of the South



Sunday 11th July

It was a beautiful frosty morning for our ride to Anatoki Salmon Farm, and just -2 degrees when I got ready to meet the rest of our group.

Delighted to see nine bikes at the start, and great to see so many faces keen to go for a ride – Anja, William, Revti, Murray, Darren, Richard, Mathias, Peter W, and new members Matt and Marie. Tony and Gretchen briefly showed up in their car to wish us a good ride.



At the Start: Revti, William, Darren, Richard, Mathias, Murray, Matt, Marie

My heated hand grips, heated gloves and my heated jacket which were working wonderfully and proving their worth. But mindful of the temperature and conscious not everybody would wish to tackle the Takaka Hill in winter, I made the call to have a coffee stop at Mrs Smiths in Riwaka to see who was keen to go further.

I had prepared a few 'alternative' roads to go to Riwaka, some of which we hardly ever ride. We used the corner man system as the chosen route was not straightforward, which quickly became apparent as

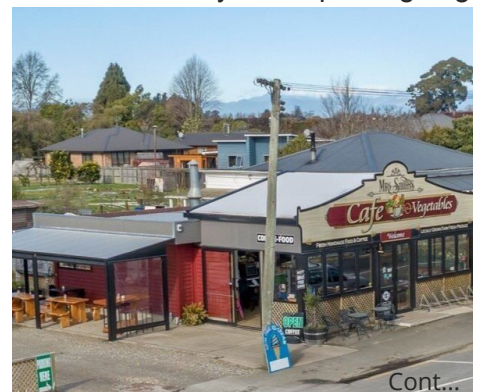
I myself forgot one turn off! Everybody followed me to the end of Central road where we all did a U-turn and rode a few km's back to pick up from where I went wrong. The power of being the ride leader is enormous!! 😊

There was some gravel on the road nearing the Motueka Valley and a few icy patches in the shady areas of the Motueka Valley. I think we all had a little feel of that but nothing to be too concerned about as we all arrived in good spirits at Mrs Smith's Café for a hot drink and a bite to eat.

After a good chat and catching up only Darren, Matt & Marie and myself kept on going



Back: Darren, Richard, Revti, William, Peter W and Marie,
Front: Murray, Anja, Mathias and Matt



Cont...

Area Report: Top of the South



Sunday 11th July

over the Takaka hill to Anatoki Salmon Farm.



Lunch at the Salmon Farm – Matt, Marie, Anja, Dar...

Arriving at the traffic lights with only a 2-4 minute to wait, enough to push us through to the front of the line. This gave us a clear run over the hill with no ice (only some grit) which made it very enjoyable.

By the time we made it to Anatoki, it was nice and warm, and we had a good look around but decided not to go fishing ourselves. Instead, choosing to share a salmon pizza and salmon chowder which was extremely delicious!

The ride back was also enjoyable with snow around on the higher hills and the sun still out. Home before the sun went down.

WWA very successful day out with 249 kms on the clock.

Report & photos by Anja Claus
#3706

Avon City Motorcycles



The Ultimate Riding Machine



That's right! Present your BMWMCNZ Club membership card at Avon City Motorcycles and you'll receive a 10% discount on all service costs, parts and genuine BMW accessories.

MAKE LIFE A RIDE



Area Report: Canterbury



One Sunday in July



A keen group of riders met at The Sign of The Kiwi Cafe early Sunday morning.

We intended exploring some of the interesting roads out around Banks Peninsula. Starting out with a nice cruise along the Summit Road which follows the top of the Port Hills giving us some spectacular views across the Canterbury Plains, Lake Ellesmere, and the Pacific Ocean.

We headed around the east side of Lyttleton Harbour through Purau and up into the hills beyond. After riding through Port Levy, we got onto the first of our stock routes, over Cattle Hill. The stock routes are beautiful narrow (very narrow in places) hardpacked gravel and dirt roads, with few people using them.



After a leisurely break to take in the views at Pigeon Bay and then up another beautiful stock route to the Summit Road above Duvauchelle. We followed the Summit Road for 5 km and then dropped onto another stock route which took us down to Duvauchelle for our lunch at the Duvauchelle Hotel.

Cont..



Area Report: Canterbury



One Sunday in July

Lunch out the way, we headed out around Onawe Peninsula then on through Barrys Bay and Wainui following the western side of Akaroa Harbour. Then onto Bossu Road which is another spectacular gravel road along the tops of the hills with some spectacular drop-offs each side. Eventually we hit the road down to Okuti Valley and skirted around the Little River area to western Valley for more gravel over the top into Port Levy. From there we backtracked through Purau and Lyttleton Harbour and made our way home. It was a stunning day with wonderful Canterbury winter weather. Taking in the views along the Summit Road. At the head of Pigeon Bay, a fine line up outside the Duvauchelle Hotel Lunch stop, with new member Fernando Costa enjoying the tucker, and the outlook over Akaroa Harbour.

Julie Hyde #3547
Canterbury



NOTICE BOARD

Area Reps meeting 21st and 22nd August 2021

We would love to hear your views so, please share any feedback or ideas with either your Area Rep directly (contact details on the website and at the back of each Newsletter) or emailing:

feedback@bmwmc.nz.

Have you any favourite websites books, Youtube channels, you would be happy to share with us all? I'm guessing you have and would welcome the recommendations.

One that I'm pleased I stumbled across is the website [Adventure Rider Radio](#). This site has some great material free to access. Coaching videos, reviews and podcasts. I enjoyed listening to some of the podcasts and interviews with Ted Simon (author of Jupiter's Travels and inspiration to Ewan McGregor's "Long Way Round" -

GS Off Road Skills Day

9th October / \$50

Email: pete@kiwiridder.co.nz

Did you know?

The Treaty of Versailles is the Reason BMW Began Making Cars

Bizarrely, the Treaty of Versailles is responsible for BMW manufacturing cars. During World War I, the company had produced plane engines. Following the war, the terms of the Treaty of Versailles banned German companies from producing both warplanes and engines for warplanes. For this reason, BMW was forced to diversify their company to remain in business. Originally, they shifted their focus to motorcycles before beginning car production in 1929. It was only because of the Treaty of Versailles that they began to manufacture cars. If it had not been for World War I, the history of BMW would be an entirely different story.



**BMW
MOTORRAD**



THE NEW 40 YEARS GS ANNIVERSARY SERIES



MAKE LIFE A RIDE

Marketplace

To advertise, please email
editor@bmwmc.nz

Marketplace is a service for members of BMWMC, NZ.

Advertisements will be accepted from members, commercial traders and non-members when it is considered in our members' interest to do so. No charge is made for Marketplace advertising. The Editor and Executive reserve the right to reject or modify any advertisement considered inappropriate and take no responsibility for errors or omissions, the quality of items, claims made, or for any transactions that ensue.

Advertisements run for approx. 3months from the date first published unless otherwise arranged with the Editor.

FOR SALE

F800ST, 2006 model in good order

New WOF, registered till June 2022.

Only 56,212Kms. BMW Panniers / Givi Top Box Inc.

\$5,500 - Only selling as I am moving and unable to take the bike. - Please email Bruce:

br.vi.frost@gmail.com

Member #865 - Wellington Area



Clearing the garage, I found this brand new aftermarket suspension lowering kit for F750GS I imported from the UK. Cost me \$460NZ. Price \$350 ono



And this, original Factory F650GS Screen.
Near new condition. \$80-00 ono.



Contact Gordon Hartley #3116

Phone 027 437 7821 or Email ghartley55@gmail.com

WANTED

A pair of BMW Vario Panniers to fit a 1200GS 2015 onwards. Contact Ian Jaques on 021 111 6173.

I'm looking for a top box plate adapter plate for my K1100LT top box to fit my current bike (which I bought new in Melbourne in 1985), 1985 R80RS Mono with its normal rear rack.

The adapter plate is no longer listed as a part
Paul MEILKE # 3311

Mb. 027 600 1957 or pdmeikle57@gmail.com

I'm looking to buy a classic BMW. Motorcycle.

Anything considered, I but would prefer a 1982 or earlier, twin cylinder in good original condition.

Please contact me if you can help.

Bob Cumming, Wellington

Mb. 027 222 6817 or bob.lyncumming@gmail.com

1996 BMW R1100RT. 240,453kms,

Ohlins front and rear suspension.
Owned for the last 8 years, \$2,500 or near offer.

Would consider swap for R1100GS or F650 etc

Contact - Trevor on 027 726 2647 or
email: scampycrow@xtra.co.nz

R1200GS seat in
good condition
open to sensible
offers.



Murray.

027 433 6657 or

muzzapeth1@gmail.com



BMW Motorcycle Club
Aotearoa New Zealand



South Island RAG Rally Registration

Collingwood Holiday Park

William Street, Collingwood 7073

Friday 19 – Sunday 21 NOVEMBER 2021

Disclaimer: This event is run under the BMWMCNZ Risk Management Plan as noted in the Club's newsletter. By registering for this event, participants agree to abide by all the conditions set out in the risk management plan.

Name				
Address				
		Postcode:		
Contacts	Mobile:		Phone:	
	Email:			
Membership #:		Area:		
Name 1:		#	Cost PP	Total
Name 2:		people		
Registration: Weekend Participation (includes two nights, Cabin accommodation Friday & Saturday. Breakfast, Saturday and Sunday morning. Dinner Saturday Night @ Collingwood Tavern)			\$135	
Rally Participation including Breakfast & Dinner (as above) - Excludes Accommodation			\$60	
Tent Site / per head			\$30	
Surcharge for Non-Club members			\$40	
TOTAL				\$



Collingwood is situated at the end of SH60 Takaka Golden Bay. A unique region full of places to explore. The Golden Sands of Tataranui. The everchanging Farewell Spit. Venture all the way to Anatori taking you along the Whanganui Inlet. Head south to the Cobb Dam. Stay longer if you wish and enjoy the locality in more detail.

Registration forms: **Email** to ragssouth@bmwmc.nz (Entries will be acknowledged)

Internet banking payment to BMWMCNZ Event account 03 1519 0034447 001

Please reference with Name, Membership Number and SIRAG



BMW Motorcycle Club
Aotearoa New Zealand



Rally / AGM 2022 Registration Form

BMW Motorcycle Club – Rally 2022 Registration Form

Friday 21 January - Monday 24 January 2022

Methven Resort - 51 Main Street, Methven 7730

Phone (03) 302 8724

Email: reservations@methvenresort.com

Name 1		Membership Number	
Name 2		Membership Number	
Address			Post Code
Contact Phone			
Email			

	Cost pp	Number of people	Total
Registration	\$40.00		\$
Surcharge for Non Club Members – per person	\$20.00		\$
Friday Night 'Meet & Greet' – per person	\$45.00		\$
Saturday Night	\$65.00		\$
Sunday Night	\$45.00		\$
Rally Polo Shirts (See Newsletter for sizing) Orders must be received by 30 November 2021 Mens S M L XL 2XL 3XL 5XL (half chest size) 52 55 58 62 65 71 79 (cms) Womens 8 10 12 14 16 18 20 22 24 46.5 49 51.5 54 56.5 59 62 65 68 (cms)	\$55.00	# Men Size # Women Size	\$

TOTAL PAYMENT FOR THIS RALLY

Payment to BMWMC's Account 03-1519-0034447-01

Use your Name and Membership Number – Reference Code R2022

\$

HOTEL SPECIAL

Special Hotel Rate - Bed and Breakfast \$158.00 per night (Single/twin/double room)

Book Direct on 03-302 8724 or at: reservations@methvenresort.com

[Special Dietary Requirements:](#)

Send completed Registration Forms to: rally2022@bmwmc.nz OR

Post to: Rally 2022, C/- 24 Inglis Road, RD3, Rangiora 7473

All registration forms will be acknowledged.

Disclaimer: This rally will be run under the BMW Motorcycle Club Aotearoa New Zealand (Inc) Risk Management Plan as published in the Club's Official Monthly Newsletter. By registering for this event, participants agree to abide by all the conditions of the said Risk Management Plan.



BMW Motorrad

MAKE LIFE A RIDE.

motomart

Service Department:

Dave: 04 589 5106 ☒

Sales Executives:

Kent: 021 445 787 ☒

Gareth: 022 333 6473 ☒

Dealer Principal:

Ian: ian@motomart.co.nz ☒

*Wellington's
Premium Dealership*

Proudly servicing the Lower North Island with
Genuine Parts, Genuine Accessories and
Genuine Service.

Address:

7 Rutherford Street
Lower Hutt
Wellington, 5013

Phone:

04 589 5106

Web:

www.motomart.co.nz

Area Representatives

NORTHLAND

Ian Macartney
027 281 0242
northland@bmwmc.nz

AUCKLAND

Stephen Parkinson
021 989 092
auckland@bmwmc.nz

WAIKATO

Paul Quilter
07 859 2512
waikato@bmwmc.nz

BAY OF PLENTY

Philip King
021 659 484
bayofplenty@bmwmc.nz

TARANAKI

Ray Senior
06 753 6044 or 021 479 231
taranaki@bmwmc.nz

RANGITIKEI

Murray Petherick
027 433 6657
rangitikei@bmwmc.nz

EAST COAST

Coordinator: John Wuts
06 844 4751
eastcoast@bmwmc.nz
Ride Master: Joe Booyens
021 0292 8656
johan-booyens@yahoo.com

WAIRARAPA & WELLINGTON

Peter Nash
021 0823 0972
wellington@bmwmc.nz

TOP OF THE SOUTH

Peter Brandon
021 842 291
tasman@bmwmc.nz

WEST COAST

VACANT
westcoast@bmwmc.nz

CANTERBURY

Julie Hyde
027 465 6626 or 03 312 5395
canterbury@bmwmc.nz

SOUTHERN

Andy Hutcheon
027 464 3230
southern@bmwmc.nz