

MEMBER OF THE INTERNATIONAL COUNCIL OF BMW CLUBS

NEWSLETTER

AUGUST 2019

BMW Motorcycle Club
BMW Owners Register
of New Zealand



BMWMC.NZ



A clone lacks the original's spirit.

If the cost was roughly the same, for obvious reasons, you'd choose the original over the clone.

The team at Star Motorcycle has been building custom motorcycle insurance from the ground up for over 30-years. We're home to kindred riders who help protect serious motorcycle enthusiasts, free spirits, and original design lovers. We insure more motorcycles than anyone else. Period.

Everyone here can make the call on your policy without forcing you to wait on a third party's decision. Our personal inhouse team is an added benefit of dealing with NZ's original, specialist motorcycle insurance provider.

Originals lead. Clones follow. Ride with leaders at Star Motorcycle.

Find us online: **starinsure.co.nz**

Call us: **0800 250 600**



Don't forget to ask about the John Baker special.



SEND EDITORIAL COPY TO:

editor@bmwor.org.nz

ALL OTHER CORRESPONDENCE TO:

The Secretary
BMWOR of NZ
PO Box 109-245
Newmarket
Auckland 1149
New Zealand

PRESIDENT

Garry Williams
03 312 8204 or 027 242 7799
president@bmwor.org.nz

VICE PRESIDENT

Grant Aislabie
021 989 303 or 09 529 0229
vicepresident@bmwor.org.nz

SECRETARY

David Ross
(04) 461 7078 or 027 645 8236
secretary@bmwor.org.nz

TREASURER

Robin Wood
021 724 859
treasurer@bmwor.org.nz

MEMBERSHIP SECRETARY

Chris Souness
021 494 952
membership@bmwor.org.nz

MEMBER REPRESENTATIVE

Dale Grover
03 546 9771 or 027 297 1759
memberrep@bmwor.org.nz

BMWOR GEAR

Ian Sowden
regalia@bmwor.org.nz

ARCHIVIST

Paul Edlington
(09) 478 3903
pauledlington@xtra.co.nz

Contents

- 3** New Members
- 5** President's Podium
- 6** Risk Management Plans
- 7** Events Calendar
- 8** Letters to the Editors
- 9** Area Reports
- 10** Bavarian Report
- 12** Registration Form: 2020 Rally
- 13** BMWOR NZ Annual Rally & AGM
- 15** South Island Rough as Guts Rally 2019
- 19** Marketplace
- 20** Area Representatives

New Members

We hope you'll take part in many of your local and national events. Your Area Rep will be pleased to introduce you to other members in your area. Our monthly newsletter is an open forum for all members. If you fancy having a story (and photos) published about your ride, the rebuild of your bike, a book you might have read or a movie you have seen lately, or just want to get something off your chest about how the club is going, then get in touch with the Editor no later than the 15th day of the month preceding publication. We welcome your contribution.

Liang (Alick) ZHANG - WELLINGTON
Ross LOMAS - GISBORNE
Sue RAY - AUCKLAND
Peter PARKIN - AUCKLAND
Michael GOUDIE - AUCKLAND
Zhu (Jojo) YING - QUEENSTOWN
Markus LASCH - NELSON
Angus MCFARLANE - AUCKLAND
Chris MCKINNON - HAMILTON
Martin HARRIS - MARLBOROUGH
Mary LOVE - NORTHLAND
Joe HALL - PARAPARAUMU
David BRADBURY - AUCKLAND

Colin GATES - LOWER HUTT
Rick RATCLIFF - DUNEDIN
Les HOWARD - KAPITI COAST
Terry PERREAU - AUCKLAND
Mark PAINTER - AUCKLAND

Please Note: Any material intended for publication in the newsletter should reach the Editor no later than the 25th day of the month preceding publication. The newsletter is an open forum for all members. Views expressed by members may not necessarily represent the views of BMWMC of NZ. Publication of all material is subject to the Editor's discretion. Photos are courtesy of article authors unless otherwise specified.

Cover: Make Life a Ride
Photo: Motorad



Market-leading insurance exclusively for BMWOR members

As sponsors, and the preferred insurance broker to the BMWOR for over 10 years, Aon have designed an exclusive motorcycle insurance offering specifically for BMWOR members which includes discounted rates and enhanced policy cover.

Aon's insurance offer provides cover for all types of on-road motorcycles including 3 wheelers, and off-road motorcycles including quad bikes, competition motorcycles (not covered whilst racing), motorcycle collections and classic/vintage motorcycles.

For more information, please contact Leonie Steedman

0800 65 62 64
leonie.steedman@aon.com



Empower Results®

aon.co.nz

Key features include:

- Reduced policy excesses
- Age, multiple bike, loyalty, trike, Named Rider and Restricted Usage discounts available
- New replacement motorcycle for total loss within 24 months of registration as a new motorcycle up to 30,000km
- Windscreen/shield, headlights or tail lights covered with nil excess
- Roadside assistance for comprehensive cover
- Automatic Riding Apparel cover
- Optional Replacement Riding Apparel cover
- Nil excess for one claim within 12 months with a Ride Forever training course certificate



Presidents Podium

Garry Williams

I mentioned in last month's spiel that the Board bought our Area Reps together for a weekend in Wellington in early June, and it was great to see all areas represented. One of the things we talked about was the club's involvement in discussions with the Motorcycle Safety Advisory Council (MSAC) around how our members might be rewarded for being safer riders. Also, in our submission to last year's levy consultation, we told ACC that better-skilled riders should pay less for the ACC component of their motorcycle registration. Great to see then the announcement earlier this month of the Ride Forever \$100 Cashback Incentive. This is one way of rewarding riders by offering a \$100 cashback on their motorcycle registration when they complete Ride Forever courses, and another \$100 cashback 12 months later in their second year. Motorcyclists who complete a Ride Forever course are 27% less likely to submit a claim. The aim is to get more people through the Ride Forever programme so there are safer riders on our roads. The Cashback incentive pilot will run to 30 June 2021 so there's plenty of opportunity to join in. For more information and to check out your eligibility take a look at www.rideforever.co.nz/cashback

One of the other things we spent time on over the two days was how we go about strengthening our brand, which coincides with a discussion over the last year or so between BMW clubs worldwide and the BMW Clubs International Council around branding, in particular BMW Motorrad's ever increasing prescription around the use of its corporate identity.

This was actually the genesis for the year-long discussion and feedback opportunities around the development of a new club logo. From all the feedback (of which most was very positive), and on behalf of their areas, the Area Reps agreed that any new logo will include the word 'Aotearoa', a concept including a Kiwi was the preferred option, and the final design would be completed externally by BMW Clubs International, who would then seek official approval and registration for its use from BMW AG Munich.

Following an approach to BMW Clubs International for the design work, we were asked if we'd consider making a shift to a "BMW Motorrad Club" brand. While not a directive from BMW AG as yet, some BMW motorcycle clubs have made or have started to make the shift to Motorrad branding voluntarily. The Board considered but politely declined the request as our preference is to retain our branding as a BMW Motorcycle Club, at least until BMW AG makes "Motorrad" branding a mandatory requirement. BMW Clubs International respect our view and will be seeking official approval and registration of our new logo over the next month.

It's a bit sad the New Zealand Motorcycle show planned for the weekend of 14/15 September at the ASB Showground in Auckland has been postponed. I'd already booked airfares for Jo and I to be there, so we'll just have to find something else to do in Auckland that weekend.

The South Island RAG Rally is the weekend of 16/17 November. We'll be congregating at the Borland Lodge, an unpretentious rural resort just off the Southern Scenic Route, between Lake Manapouri and Lake Monowai. Accommodation is in straightforward cabins, plus there's communal kitchens & dining areas. The lodge actually began life as the Pig Creek Hostel providing accommodation for the power project workers. Registration details will be out soon with more detail on what the weekend involves.

Unfortunately, we've had another set-back with planning around the club's Waimarino Adventure on Saturday 1 December. Suffice to say the decision has been made to move this to March next year and to a totally different venue. The event itself is still well in hand thanks to Stuart Hamilton and his team.

Next year is the 40th GS Anniversary. Justin and I are scoping out a bit of an adventure similar in concept to the 30th Anniversary ride back in 2010. Our plan is to run this in March as well, and hoping the weekend of the Waimarino Adventure will form part of it. More details around what this will look like when we've sorted a few things out.

By now you'll have booked your accommodation in Blenheim for the Annual Rally in January. If you haven't and are still thinking about coming I'd suggest you get onto that quick smart, there's not much left in town. The registration form has been published so you can get that done too.

There are plenty of other local area events going though. Do yourself a favour by looking out for the details from your Area Rep, the club website or our Facebook page. There's plenty to be getting on with wherever your travels take you in August; have fun and make good decisions!

Garry

BMW Owners Register Risk Management Plan

Introduction:

The BMW Owners Register is an organisation whose members join together for rides to nominated venues and for other social occasions. The organiser nominates the destination and regrouping stages along the way, but otherwise has no influence upon the way that riders behave on the road. There is no element of organised competition in the rides.

Riding Code:

1. All register members on register rides shall do so as individuals responsible for their own safety and shall take into account the safety of others they encounter on the ride.
2. Register members are responsible for ensuring that their motorcycles are in a safe and legal condition, the minimum being to Warrant of Fitness standards.
3. Riders, pillion, and sidecar passengers where required, shall have as a minimum Standards New Zealand approved motorcycle helmets, and stout footwear, gloves and clothing that will be capable of protecting their body in the event of a mishap.
4. Register members are to go to the aid of any others suffering a mishap.
5. Ride organisers shall nominate the destination for the ride as well as any regrouping locations or other stops. The organiser is not responsible for other riders' behaviour or safety.
6. Riders shall ride at a speed and in a way that is comfortable for them. Do not ride outside your personal comfort envelope.
7. If a rider is unfamiliar with the route, they shall arrange to follow another rider who does know the way and who travels at a comfortable pace.
8. Riders who decide to travel as a group shall adopt a staggered riding formation such that there is an accepted following distance to the rider immediately in front. A reasonable following distance is indicated by a time of two seconds between riders for dry conditions, and longer for inclement conditions and on loose surfaces.
9. The Organiser and or the Register are not responsible for participants' safety, and all participants participate at their own risk. All participants are aware that they are travelling on open public roads and are responsible for their own safety and compliance with all Road Rules and Laws.



Events Calendar

National Events

Link for country-wide events:
<https://www.mnz.co.nz/events>

National BMWOR Events

Fri 5th April Dawn Chorus Pureora Forest Park
Sat 6th - RAG Rally. Pokaka, National Park. North
Sun 7th April Island.

Regional BMWOR Events

Northland - *See area Rep.*

Auckland - *See area Rep.*

Waikato - *See area Rep.*

Bay of Plenty - *See Area Rep.*

Taranaki - *See Area Rep.*

Rangitikei - *See area Rep.*

East Coast - *See Area Rep.*

Wairarapa/Wellington -

Note – In addition to the events noted here we also undertake 'Impromptu Rides' these are offered via Email to the membership with a couple of days' notice when the weather looks like being favourable.

Club Night – Monday 12 August at the Petone Workingmen's Club from 6pm.

Monthly Club Ride – Sunday 18 August – Gladstone Pub for lunch – see the Monthly Email for times and route or contact the Area Rep

Nelson - *See Area Rep*

Canterbury - *See Area Rep*

Otago/Southland - *See Area Rep*



ARCADIA MOTEL

CHRISTCHURCH

Comfortable, spacious affordable accommodation





FREEPHONE 0800 272 2342

564 Ferry Road, Woolston, CHRISTCHURCH, NEW ZEALAND • info@arcadiamotel.co.nz • www.arcadiamotel.co.nz



Letters to the Editor

Dear Editor,

Whilst the format of the Newsletter ... electronic or printed ... may receive divided levels of 'support' there would be no such debate about the actual newsletter. Monthly, it arrives in the hands of the members and for many it is eagerly anticipated. It is the way we can all stay connected.

The Newsletter does not write itself. Many members share their keyboard, be that as a heads up about forthcoming events at local or national level, or by taking the time to share anecdotes that are "us". The creation of the Newsletter is left in the hands of the Editor, and we have been blessed by many fine wordsmiths.

We are about to lose our current voluntary Editorship of Dave Morris.

As a lone voice, I would like to place on record my most sincere thanks to our Dave for his sterling and tireless effort in bringing us a high quality, informative Newsletter. In his

time in the chair, there has been a raft of changes that he has had to incorporate in the production process. And let us be cognisant of the fact that the changes have had to take account of the monthly publishing date that must loom large on the daily lives of any Editor's household.

And perhaps not as a lone voice but one that has the endorsement of the full membership, it seems to be time for Dave's efforts to be both recognised and rewarded.

The nature of that recognition and reward would eventually be up to 'the Board'. My lone voice says that in whatever form that takes, it would need to reflect the efforts of a very valued member, and the high level of pleasure we have all received as the monthly BMWMC NZ newsletter enters our lives.

Lance Nixon

#1550

Losing Your Grip?
Get your new
HEIDENAU
TIRES

Tires, or rental bike from:



**Kiwi Motorcycle
Rentals**

**4 McLean Drive LeithfieldAmberley RD1
New Zealand**
Ph 033149947 or 0274876570
e-mail: andrea@motorcyclere rentals.kiwi
web: www.kiwimotorcyclere rentals.com



Area Reports

Waikato

6 people attended our monthly dinner meeting at Café Oasis on Thursday 18th July.

Due to poor weather and several members being away overseas and others shortly leaving on trips - we have not had any rides in the past few weeks. We are just a bit envious of Warren and Sue, who are off on a Sama Tour for a month - but enjoy Sth Africa anyway and watch out for those hippos and elephants.

Discussions were made about a 2 day ride to the Hawkes Bay with an overnight, so we have that in the planning stages for when it gets a bit warmer.

Graham & Sue Duncan are providing regular reports on their tour of North America, with some great photos as well. They will have done about 15,000 kms by now.

East Coast

On the 25th June the East Coaster enjoyed a wonderful dinner at the Water Bar and Restaurant in Ahuriri.

In attendance were, from left, Stella, Walter, Robert, Les, Carole, Pam, Warren, Robyn, Peter, Bronwen, Folker and John (below pic)



Wellington/Wairarapa

Club Night – Monday 8 July at the Petone Workingmen's Club – 12 Members attended.

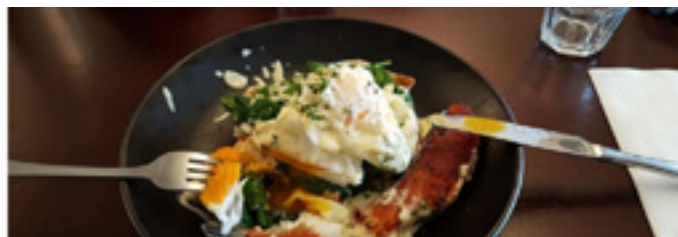
Gravel Road Riding Training - Discussion covered off the recent, continuing Gravel Road Riding Training conducted by Peter Tibbs using roads in the Wairarapa. Two sessions conducted so far with 13 riders out of the 20 members who originally expressed interest for the first session and 12 riders for the second. These training sessions are weather dependant and availability of Peter Tibbs. Feedback from all those who have attended has all been very positive.

Monthly Club Ride – was cancelled due to bad weather.

Nelson

For our July club ride eight of us met up at Squires Cafe in Stoke for breakfast.

The weather looked ok despite the forecast for heavy rain, so some of the guys went home to get their bikes and seven riders went for a ride, soon after setting off the rain came but a good time was had by all at Pelorus Cafe anyway.





ARCADIA MOTEL

CHRISTCHURCH

Comfortable, spacious affordable accommodation





FREEPHONE 0800 272 2342

564 Ferry Road, Woolston, CHRISTCHURCH, NEW ZEALAND • info@arcadiamotel.co.nz • www.arcadiamotel.co.nz



Bavarian Report

Ian McCartney

Top day 220km of full on twisties around Austria on the new 850GSA & what a blast.

Nice small group of 5 riders & Tom the Leader(works at BMW Motorsport , Munich) top guy.

Totally surprised at how good this bike is, pretty lively and well balanced despite the time spent at BMW McDonalds outlet in Berlin during its development. The Electronics & gold rims must really add weight to a bike.

Engine had a visceral rumble roar at times mainly when twisting throttle excessively out of corners.

Don't know what 5th & 6th gear like as I hardly used them - it was pretty tight riding through tunnels, forests & over 2000m mountain passes.



Morning coffee stop - nice bike

TFT screen was a novelty but impressed with its clarity & bling factor I guess- it was like Star Wars.

Bike had a high seat & suspension electronically raised so I was unusually elevated.

Good fun and beautiful country, so many bikes on the road going home from the Motorrad Days.

We were chased down the narrow valleys by lightning & thunderstorms only getting caught for 20 min at end of day. Temps 16-25.

Rallye suit worked well with new Gore-Tex outer jacket but still using liners in pants makes them too hot. Gore-Tex Over trousers would be a better idea. Next time maybe Rallye Suit version 5 ?

Off to Lasize , Lake Garda , Italy today as Christine has a certain birthday to celebrate and it isn't 30 or even 40. but let's not go there.



850GSA



Not everyday you see a cow on the roof!

Motorrad Days was enjoyable as ever, still lots I didn't see or do but enjoyed the Test rides, odd beer, bratwurst, exhibitors, custom bikes & stunt shows. Plus the sheer numbers of bikers, every iteration of BMW bikes, as well as other brands, had descended from every corner of the planet.

The camaraderie amongst everybody of every nationality is brilliant. There was also a Tattoo Exhibition in Garmisch and a lot of these guys turned up on their Harley's, knackered from riding the 100km from Munich.

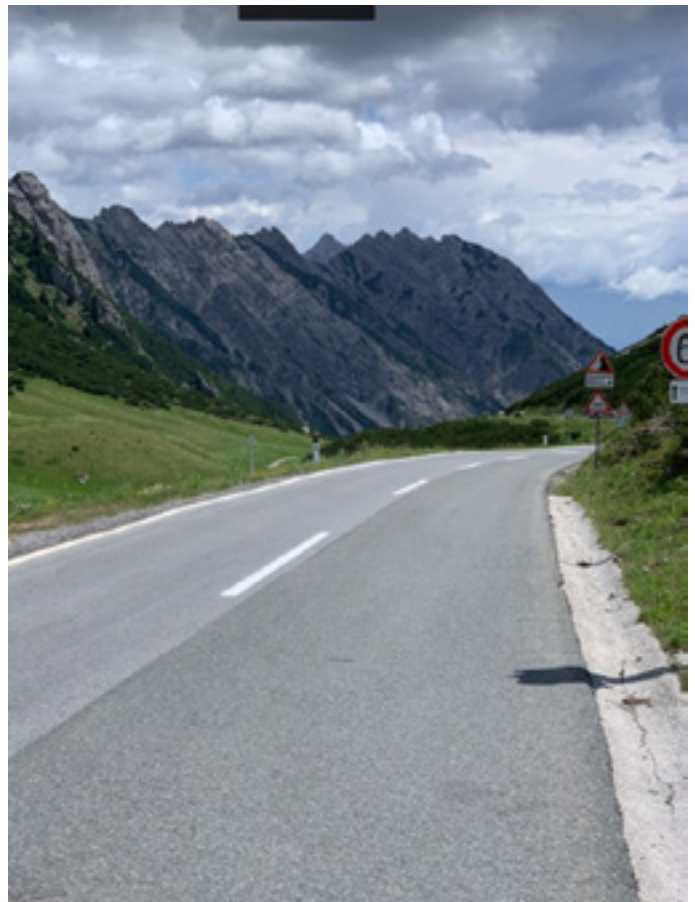
Cheers & servus

Ian

Deepest , darkest Bavaria



Lunch stop K  thai Austria



2000m pass near Imst



BM

The Bike Maintenance Shop

The Bike Maintenance Shop is Auckland's only independent BMW Specialist.
With 22 years' experience as a BMW Mechanic, we will always give you that personal service.

- BMW QUALIFIED TECHNICIAN
- BMW MOTORCYCLE WORKSHOP
- BMW MOTORCYCLE REPAIRS
- BMW MOTORCYCLE SERVICE
- BMW IS ALL WE DO
- DIAGNOSTICS EQUIPMENT
- SERVICE LIGHT RESET
- ABS / BRAKE BLEEDS
- ACCIDENT REPAIR

We also do all Bicycle Servicing, Repairs and E-Bike sales

P 09 818 5448
M 021 128 5546

A 2a Akatea Road, Glendene, Auckland
E thebmshop@hotmail.com

www.facebook.com/thebikemaintenanceshop
www.thebmshop.nz



Registration Form: 2020 Annual BMW Motorcycle Club Rally

Marlborough Convention Centre, 42a Alfred Street, Blenheim

Friday 24th to Sunday 27th January 2020

Name of registered member		
Address		
	Postcode:	
Contacts	Mobile:	Phone:
Email		

BMWOR number	Area		
Name 1:	Number	Cost PP	Total
Name 2:			
Registration: Participation in events over the weekend (Includes Saturday dinner) This provides access to tea and coffee in registration area over the weekend.		\$95	
Friday dinner		\$30	
Sunday dinner		\$40	
Surcharge for Non-BMW members		\$30	
TOTAL			

Accommodation:

Individuals to arrange own accommodation needs for the Rally.

Memorabilia: BMW Motorcycle Club Annual Rally Blenheim 2020

Pre-orders appreciated.

	Size/Length	Qty	Cost	Total
2020 Rally Badge			\$15	
T-Shirt size (Men) Short & Long Sleeved	Available sizes – Small to 5XL Please refer to sizing chart	<input type="checkbox"/> Long	\$50	
		<input type="checkbox"/> Short	(Short)	
T-Shirt size (Women) Short & Long Sleeved	Available sizes – 6 to 26 Please refer to sizing chart	<input type="checkbox"/> Long	\$60	
		<input type="checkbox"/> Short	(Long)	
Polo Shirt Size (Men)	Available sizes – Small to 7XL Please refer to sizing chart		\$60	
Polo Shirt Size (Women)	Available sizes – 6 to 24 Please refer to sizing chart			

Registration forms: Email to bmwor.nelsontasman@gmail.com (All entries will be acknowledged)

OR Post to: Z Hewitt – 34 Coster Street, Enner Glynn, Nelson, 7011

Payment by internet banking to

BMWOR Event Account

03 1519 0034447 001

Reference with Name - _____

BMWOR member number

Rally2020

Health /dietary concerns that are pertinent to this event.

It is important if you are travelling/participating as an **individual** that the organisers are aware of these.
Please communicate pertinent health concerns with the appropriate staff member at registration.
Meals are all buffet style: the kitchen is experienced at providing meals for all special dietary requests.
Please indicate below if you have specific dietary needs.

Meal requirements	Dairy Free	Vegetarian	Gluten Free	Other:
	Please Specify			

Disclaimer: This Rally will be run under the BMW Owners Register Risk Management Plan as in the register's official newsletter. By registering for this event, participants agree to abide by all the conditions of the said Management Plan.

Marlborough 2020 | Gateway to the South

BMW Motorcycle Club

BMWOR NZ Annual Rally & AGM

Friday 24th to Monday 27th January | Hosted by Nelson Area BMWOR



Elaine Bay, Marlborough Sounds

To be held at the Marlborough Convention Centre

42a Alfred Street
Blenheim

30 Minutes from the Picton Ferry Terminal, accessible via SH1 and SH6

Only 5 minutes parking on site on Friday Parking is being arranged at the Blenheim School, next to the venue
Please book your own accommodation, this is running out fast so please book soon if you haven't already.

New style T-Shirt and Polo Shirts for the 2020 Rally. Long sleeve version available in the T-Shirt only.

The Marlborough region is only the Gateway to the South Island. It is less than two hours to Nelson, a pleasant ride over the Whangamoas, or take the longer route (or do a loop) through the Wairau Valley to St Arnaud home to the stunning Lake Rotoiti.

Further afield there are plenty more great rides:

- Over the Takaka Hill to Golden Bay
- Gravel ride to Canaan Downs, home of Harwoods hole
- Gravel ride to the Cobb Dam
- Gravel ride to Anatori
- Reefton Via the Rahu Saddle (through stunning Beech Forest)
- The Maruia Saddle gravel ride from Murchison towards Springs Junction
- Westport through the Buller Gorge, and on up to Karamea (Southern end of the Heaphy Track)
- From here you can do an easy two hour walk to Scotts Beach
- For a gravel detour there are the Oparara Arches
- Westport to Greymouth via Punakaiki, arguably one of the most stunning stretches of coastline
- Make sure you stop and check out the Pancake Rocks.

This is just a small selection of some of the main routes around the Top of the South. If you need any help planning a trip before or after the rally we are happy to share our knowledge of the region.

The Nelson Region BMWOR look forward to welcoming you in January 2020



View from Mt Robert Lookout over Lake Rotoiti towards the Wairau Valley



French Pass



Inlet on the way to Anatori



SIZE	S	M	L	XL	2XL	3XL	4XL	5XL
LENGTH	74	76	78	78	80	82	84	86
HALF CHEST	53.5	56	58.5	62.5	66.5	70.5	74.5	78.5

MENS T-SHIRT



SIZE	6	8	10	12	14	16	18	20	22	24	26
LENGTH	65.5	66.5	67.5	68.5	69.5	70.5	71.5	74.5	75.5	76.5	77.5
HALF CHEST	43	45.5	48	50.5	53	55.5	58	60.5	65	65.5	68

WOMENS T-SHIRT



SIZE	S	M	L	XL	2XL	3XL	4XL	5XL	6XL	7XL
LENGTH	73.25	75	76.75	78.5	80.25	82	82	82	82	82
HALF CHEST	54	56.5	59	61.5	64	66.5	69	71.5	74	76.5

MENS POLO SHIRT



SIZE	6	8	10	12	14	16	18	20	22	24
LENGTH	64	66	68	70	72	74	76	78	80	82
HALF CHEST	41.5	44	46.5	49	51.5	54	56.5	59	61.5	64

WOMENS POLO SHIRT



Illustrations not drawn to scale, final design may vary slightly.

South Island Rough As Guts Rally 2019

The South Island RAG is being held at the Borland Lodge from the 15th to the 17th of November 2019, on the doorstep of the Fiordland National Park. The Lodge started life as a worker's hostel for the Manapuri power scheme, and is off the main Tuatapare to Te Anau highway. The last couple of kilometers from the main road are a flat (and usually well graded) gravel road.

Accommodation is in chalets and bunk rooms with communal facilities. I'll do my best to ensure appropriate privacy, but people may have to share in order to fit everyone in. Let me know your preferences e.g. if you are a group travelling together.

Catering will be a communal DIY effort; there is a large commercial kitchen and crockery / cutlery / utensils. If everybody lends a hand, the cooking and washing up shouldn't be too onerous. I'm sure we can match contributions to people's talents!

Registration is \$99 to cover accommodation on the Friday and Saturday nights, dinner Friday and Saturday, breakfast Saturday and Sunday, and some basic packed lunch materials for those who might choose to head away from civilization on Saturday. Drink is strictly BYO, a tippie is cool as long as we respect the other guests, but this is a Rough As so the Lodge does not supply glasses. You'll have to drink beer from the bottle, and wine from teacups. Such is hardship. Staying Sunday night can be arranged directly with the Lodge.

Please let me know if you have any dietary needs (these will be accommodated), preferences (we'll do what we can, but caviar and truffles might be a stretch), or special skills that might contribute (deer are, I understand, something of a pest in the surrounding forests).

There is a variety of riding in the area. For the GS set, a trip over the Borland saddle to the south arm of lake Manapori is recommended. Milford Sound is a day trip through the Homer tunnel, and a beautiful ride if you time it to miss the peak cruise trip traffic. Further afield or as routes to and from the rally, there's the devil's staircase south of Queenstown (and a chance to check out the new Kawaru bridge) or the Nevis road for those who prefer to cross water without the aid of bridges.

Keen? Email me at otagosouthland@bmwor.org.nz to let me know who and how many.

Payment is to the BMWOR Event Account **03-1519-0034447-01**, include your name and **SIRAG2019** in the references.

Andy Hutcheon, Area Rep, Otago/Southland

DISCLAIMER: Registration fee is non-refundable. Special applications may be considered. This Rally will be run under the BMW Owners Register Risk Management Plan as in the club's official newsletter.

By registering for this event participants agree to abide by all the conditions of the said Management Plan



ANCHOR INN MOTEL
KAIKOURA | NEW ZEALAND

BOOKING ESSENTIAL

...superb waterfront location...

Well appointed **Family Apartments** - Sleeps up to 4

- One Bedroom
- Two Bedroom Ocean View

Studios - Sleeps up to 2

- Executive Seaview
- Luxury Ocean View
- Standard Garden View

208 Esplanade, Kaikoura | Ph 03 319 5426
info@anchorinn.co.nz | www.anchorinn.co.nz

Reservations Freephone 0800 72 00 33





**MCIVER
&
VEITCH**



BMW Motorrad

ESTABLISHED
1932

112 CRAWFORD STREET, DUNEDIN / PH: 03 477 0236

www.mciverandveitch.co.nz



The Ultimate
Riding Machine

AUCKLAND'S #1 DEALERSHIP

Genuine Service. Genuine Parts. Genuine Experience.

Cyclespot Group

61 BARRY'S POINT RD
TAKAPUNA, AUCKLAND

FERG 021 190 7733
HENRY 0274 330 650

P (09) 486 1136
E SALES@CYCLESPOTBMW.CO.NZ

HEAD TO HEAD.

MAKE LIFE A RIDE.



BMW Motorrad



You decide which one, the R nineT Racer or Urban G/S.

Now only \$19,990 RRP + ORC



Visit www.bmw-motorrad.co.nz or your nearest dealer today.

Cyclespot BMW
Takapuna
Auckland
09 486 1136

**Experience
Motorcycles**
Kingsland, Auckland
09 845 5950

**Boyd
Motorcycles**
Hamilton
07 838 1209

**Mount
Motorcycles**
Mount Maunganui
07 575 4190

Motomart
Wellington
04 589 5106

**Avon City
Motorcycles**
Christchurch
03 341 3490

**McIver &
Veitch**
Dunedin
03 477 0236



Marketplace

Marketplace is a service for members of BMWOR of NZ.

Advertisements will be accepted from members, commercial traders and non-members when it is considered in our members' interest to do so. No charge is made for Marketplace advertising. The Editor and Executive reserve the right to reject or modify any advertisement considered inappropriate and take no responsibility for errors or omissions, the quality of items, claims made, or for any transactions that ensue.

Advertisements run for 3 months from the date first published unless otherwise arranged with the Editor.

On occasion Star Insurance sell parts from insurance wrecks through TradeMe.
Take a look at the Star Insurance web site for details: www.star.insurance.co.nz

For Sale:

I'm offering Riding Gear for sale on behalf of an ex-member

BMW Voyage 2 Jacket and separate pants for sale (see photos below). Both items are size L with original BMW labels, buttons etc. All original armour is in place and are in excellent order.

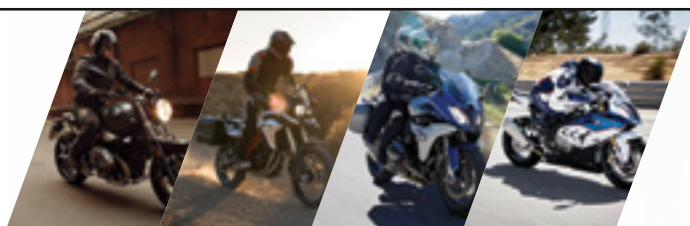
- The Jacket is a BMW Size L and from the BMW Sizing Chart that is for a chest size 50" – 52".
- The trousers are BMW Size 54 which equate to 38" – 40" waist.

Both are in near new condition. They are just on 2 years old, but her husband died a few months after buying them. He was 5'8" to 5'9" tall but with a large chest due to his Gym work.

Prices are negotiable but are about half price from a new set. Pick up is in Wellington.

Seller is based in Wellington with contact details available from me. Potential buyers are also welcome to try them on for size.

For photos of the gear or more information please contact Dave Ross on 027 645 8236



MAKE LIFE A RIDE.

motomart

Service Department:
Gareth: 04 589 5106

Sales Executives:
Ian: 027 5138 033
Kent: 021 445 787

Dealer Principal:
Richard: richard.massam@motomart.co.nz

Wellington's
Premium Dealership

Proudly servicing the Lower North Island with
Genuine Parts, Genuine Accessories and
Genuine Service.



BMW Motorrad

Address:
7 Rutherford Street
Hutt Central
Lower Hutt

Phone:
04 589 5106

Web:
www.motomart.co.nz



TOURATECH
Shop online at: <https://shop.touratech.co.nz/>

NEW ZEALAND

Touratech Elite Dealers:
 Boyd Motorcycles: 07 838 1209
 McIver & Veitch: 03 477 0236
 Motomart: 04 589 5106
 Mount Motorcycles: 07 575 4190

Area Representatives

NORTHLAND
 Ian Macartney
 027-281-0242
northland@bmwor.org.nz

AUCKLAND
 Stephen Parkinson
 021-989-092
auckland@bmwor.org.nz

WAIKATO
 Paul Quilter
 07-859-2512
waikato@bmwor.org.nz

BAY OF PLENTY
 Peter Lyner
 021-273-7379
bayofplenty@bmwor.org.nz

TARANAKI
 Ray Senior
 06-753-6044 *or* 021-479-231
taranaki@bmwor.org.nz

RANGITIKEI
 Barry Petherick
 06-368-2059
rangitikei@bmwor.org.nz

EAST COAST
Coordinator: John Wuts
 06-844-4751
eastcoast@bmwor.org.nz
Ride Master: Xan Harding
 027-612-7927
xan.harding@xtra.co.nz

WAIRARAPA & WELLINGTON
 Peter Nash
 04-232-4962
wellington@bmwor.org.nz

**NELSON - INCLUDING
MARLBOROUGH**
 Kevin Hewitt
 022 632 0025
nelson@bmwor.org.nz

CANTERBURY
 Julie Hyde
 027-465-6626 *or* 03-312-5395
canterbury@bmwor.org.nz

OTAGO AND SOUTHLAND
 Andy Hutcheon
 027 464 3230
otagosouthland@bmwor.org.nz